



2116 S Ogden Street
 Denver, CO 80210
 COMMUNITY: Rosedale, Platt Park, Platte Park

MLS # 9848303
 PRICE \$725,000



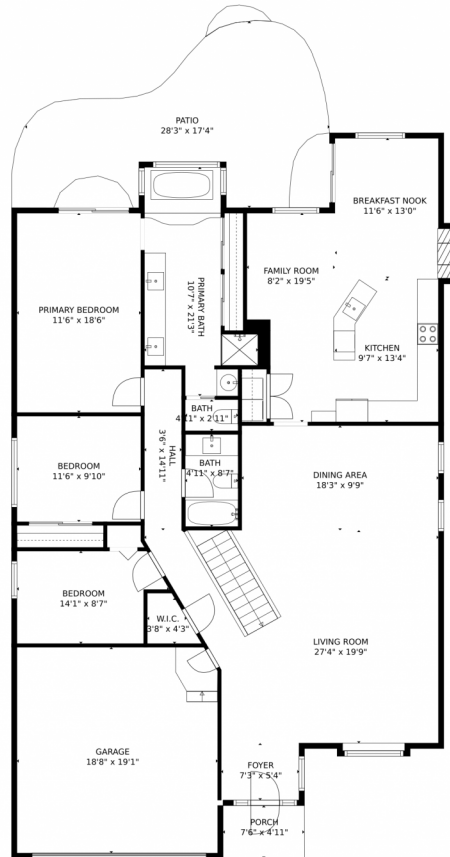
 Single Family
  3591 SQFT
  4 Beds
  3 Baths
  2 Car
  0.14 Acre



Timothy Campbell
 303-229-9172
 tim@oldcountryre.com



2116 S Ogden Street, Denver, CO 80210 – Main Level



GROSS INTERNAL AREA
Below Ground: 1200 sq. ft. FLOOR 2: 1895 sq. ft.
EXCLUDED AREAS: STORAGE: 176 sq. ft. ELECTRICAL ROOM: 71 sq. ft. GARAGE: 355 sq. ft.
PORCH: 37 sq. ft. PATIO: 340 sq. ft. FIREPLACE: 7 sq. ft.
TOTAL: 3095 sq. ft.
MEASUREMENTS CALCULATED BY V1Photos.com ARE DEEMED HIGHLY RELIABLE BUT NOT GUARANTEED.



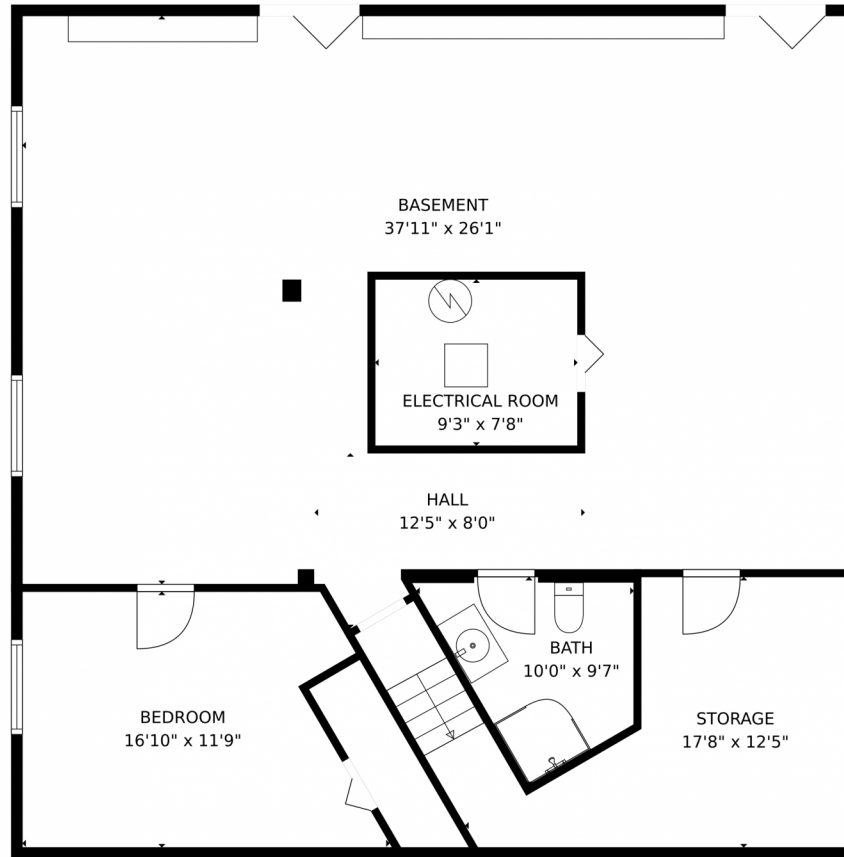
Disclaimer: Sizes and Dimensions are Approximate, Actual May Vary.



Timothy Campbell
303-229-9172
tim@oldcountryre.com



2116 S Ogden Street, Denver, CO 80210 – Lower Level



GROSS INTERNAL AREA
Below Ground: 1200 sq. ft. FLOOR 2: 1895 sq. ft.
EXCLUDED AREAS: STORAGE: 176 sq. ft. ELECTRICAL ROOM: 71 sq. ft. GARAGE: 355 sq. ft.
PORCH: 37 sq. ft. PATIO: 340 sq. ft. FIREPLACE: 7 sq. ft.
TOTAL: 3095 sq. ft.
MEASUREMENTS CALCULATED BY V1Photos.COM ARE DEEMED HIGHLY RELIABLE BUT NOT GUARANTEED.



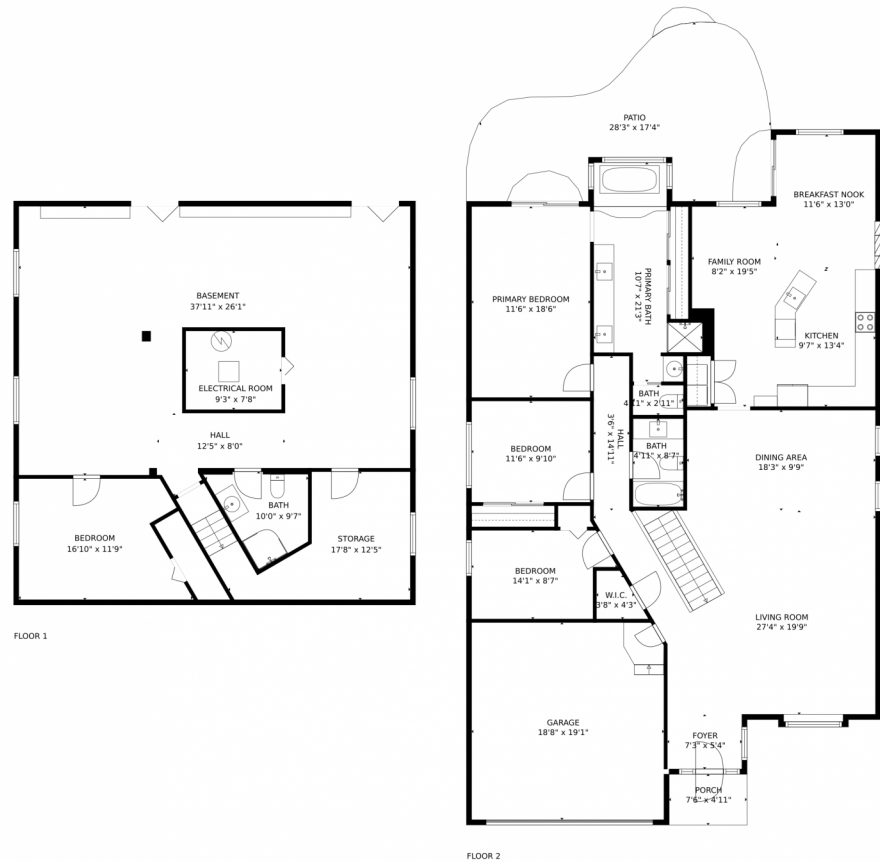
Disclaimer: Sizes and Dimensions are Approximate, Actual May Vary.



Timothy Campbell
303-229-9172
tim@oldcountryre.com



2116 S Ogden Street, Denver, CO 80210 – All Levels



GROSS INTERNAL AREA
Below Ground: 1200 sq. ft, FLOOR 2: 1895 sq. ft
EXCLUDED AREAS: STORAGE: 176 sq. ft, ELECTRICAL ROOM: 71 sq. ft, GARAGE: 355 sq. ft,
PORCH: 37 sq. ft, PATIO: 340 sq. ft, FIREPLACE: 7 sq. ft
TOTAL: 3095 sq. ft
MEASUREMENTS CALCULATED BY V1Photos.com ARE DEEMED HIGHLY RELIABLE BUT NOT GUARANTEED.

Disclaimer: Sizes and Dimensions are Approximate, Actual May Vary.



Timothy Campbell
303-229-9172
tim@oldcountryre.com

