



252 Las Lomas Street
 Brighton, CO 80601
 COMMUNITY: Pheasant Ridge

MLS # 8875519
 PRICE \$625,000



Single Family



3831 SQFT



5 Beds



3/1 Baths



2 Car



0.15 Acre

PROPERTY DETAILS

This charming home in the peaceful Pheasant Ridge neighborhood features 5 bedrooms and 4 bathrooms. The main floor has beautiful hardwood floors and plenty of natural light. The open-concept floorplan connects the living area, dining space, bedroom/office, and kitchen. The kitchen has double ovens, a breakfast bar, and ample cabinet space. The primary suite has a vaulted ceiling, walk-in closet, and private bathroom. The finished basement has a bonus room, recreational room with wet bar, bathroom, and bedroom. Outside, there is a fenced backyard with an extended patio. The home is conveniently located near a school and local amenities. Don't miss out on this incredible opportunity to make it your new home.



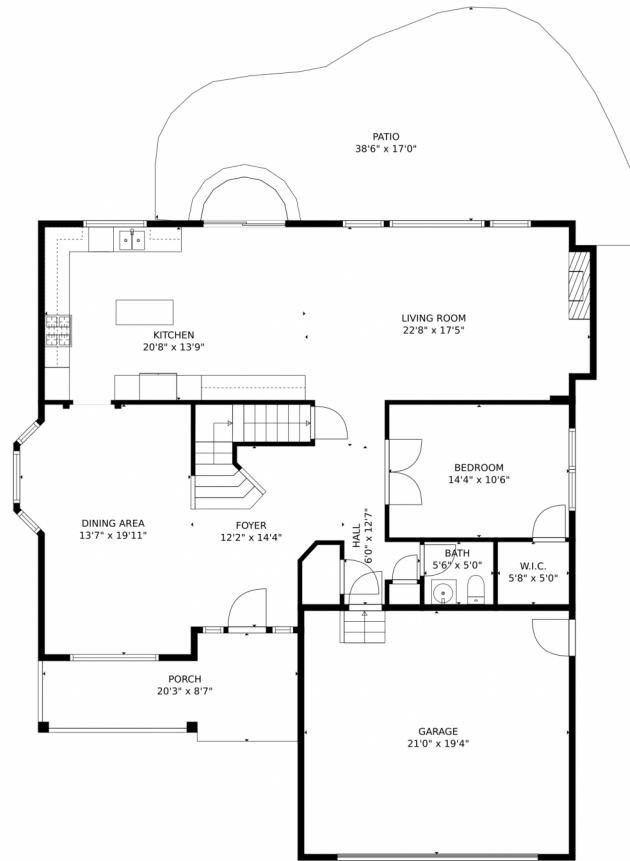
Tina Kepenach
 719-291-4165
 info@phcmoves.com



Scan code
 for more
 property
 details



252 Las Lomas Street, Brighton, CO 80601 – Main Floor



GROSS INTERNAL AREA
Below Ground: 1070 sq. ft, FLOOR 2: 1343 sq. ft, FLOOR 3: 1034 sq. ft
EXCLUDED AREAS: ELECTRICAL ROOM: 83 sq. ft, PORCH: 135 sq. ft, PATIO: 502 sq. ft,
GARAGE: 408 sq. ft, OPEN TO BELOW: 358 sq. ft
TOTAL: 3447 sq. ft
MEASUREMENTS CALCULATED BY V1Photos.com ARE DEEMED HIGHLY RELIABLE BUT NOT GUARANTEED.



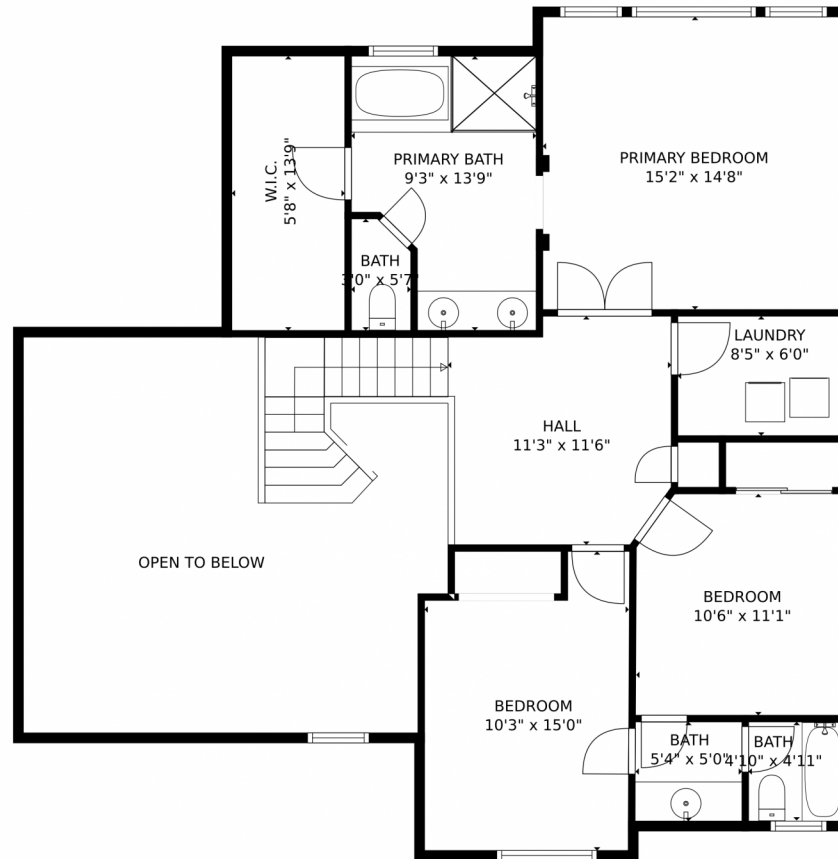
Disclaimer: Sizes and Dimensions are Approximate, Actual May Vary.



Tina Kepenach
719-291-4165
info@phcmoves.com



252 Las Lomas Street, Brighton, CO 80601 – 2nd Floor



GROSS INTERNAL AREA
Below Ground: 1070 sq. ft, FLOOR 2: 1343 sq. ft, FLOOR 3: 1034 sq. ft
EXCLUDED AREAS: ELECTRICAL ROOM: 83 sq. ft, PORCH: 135 sq. ft, PATIO: 502 sq. ft,
GARAGE: 408 sq. ft, OPEN TO BELOW: 358 sq. ft
TOTAL: 3447 sq. ft
MEASUREMENTS CALCULATED BY V1Photos.com ARE DEEMED HIGHLY RELIABLE BUT NOT GUARANTEED.



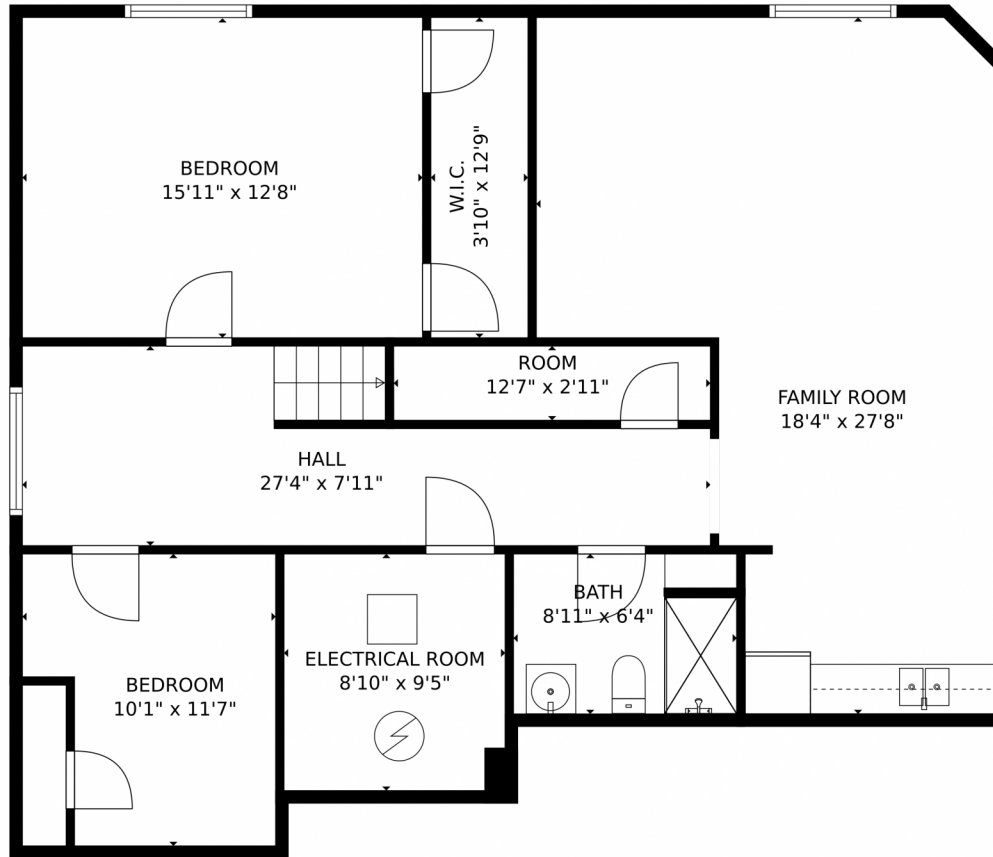
Disclaimer: Sizes and Dimensions are Approximate, Actual May Vary.



Tina Kepenach
719-291-4165
info@phcmoves.com



252 Las Lomas Street, Brighton, CO 80601 – Basement



GROSS INTERNAL AREA
Below Ground: 1070 sq. ft, FLOOR 2: 1343 sq. ft, FLOOR 3: 1034 sq. ft
EXCLUDED AREAS: ELECTRICAL ROOM: 83 sq. ft, PORCH: 135 sq. ft, PATIO: 502 sq. ft,
GARAGE: 408 sq. ft, OPEN TO BELOW: 358 sq. ft
TOTAL: 3447 sq. ft
MEASUREMENTS CALCULATED BY V1Photos.com ARE DEEMED HIGHLY RELIABLE BUT NOT GUARANTEED.



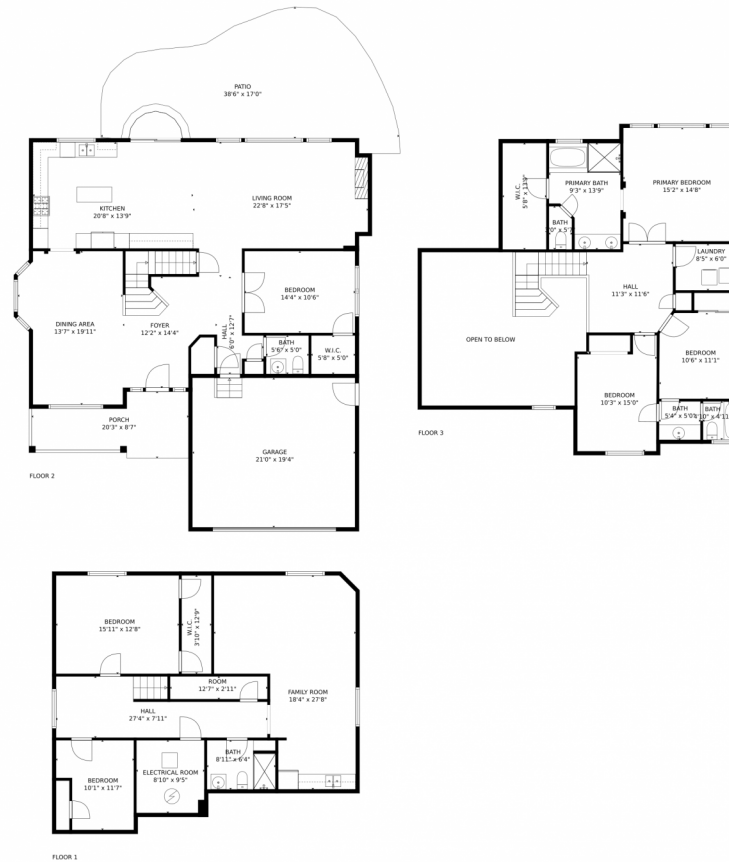
Disclaimer: Sizes and Dimensions are Approximate, Actual May Vary.



Tina Kepenach
719-291-4165
info@phcmoves.com



252 Las Lomas Street, Brighton, CO 80601 – All Floors



GROSS INTERNAL AREA
Below Ground: 1070 sq. ft, FLOOR 2: 1343 sq. ft, FLOOR 3: 1034 sq. ft
EXCLUDED AREAS: ELECTRICAL ROOM: 83 sq. ft, PORCH: 135 sq. ft, PATIO: 502 sq. ft,
GARAGE: 408 sq. ft, OPEN TO BELOW: 358 sq. ft
TOTAL: 3447 sq. ft
MEASUREMENTS CALCULATED BY V1Photos.com ARE DEEMED HIGHLY RELIABLE BUT NOT GUARANTEED.



Disclaimer: Sizes and Dimensions are Approximate, Actual May Vary.



Tina Kepenach
719-291-4165
info@phcmoves.com

