


 Single Family

 1058 SQFT

 2 Beds

 1 Baths



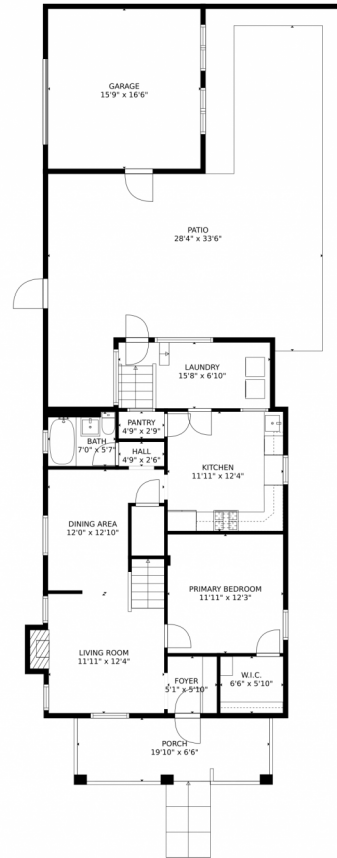
**Taylor Haas**  
303-665-7368  
taylorh@coloradorpm.com  
<https://www.coloradorpm.com/available-rental-properties-denv>



Scan code  
for more  
property  
details



# 719 West 1st Avenue, Denver, CO 80223 – Main Level



GROSS INTERNAL AREA  
Below Ground: 17 sq. ft, FLOOR 2: 871 sq. ft, FLOOR 3: 294 sq. ft  
EXCLUDED AREAS: UNFINISHED BASEMENT: 218 sq. ft, GARAGE: 260 sq. ft, PORCH: 129 sq. ft,  
PATIO: 673 sq. ft, FIREPLACE: 4 sq. ft, LOW CEILING: 87 sq. ft  
TOTAL: 1182 sq. ft  
MEASUREMENTS CALCULATED BY V1Photos.com ARE DEEMED HIGHLY RELIABLE BUT NOT GUARANTEED.

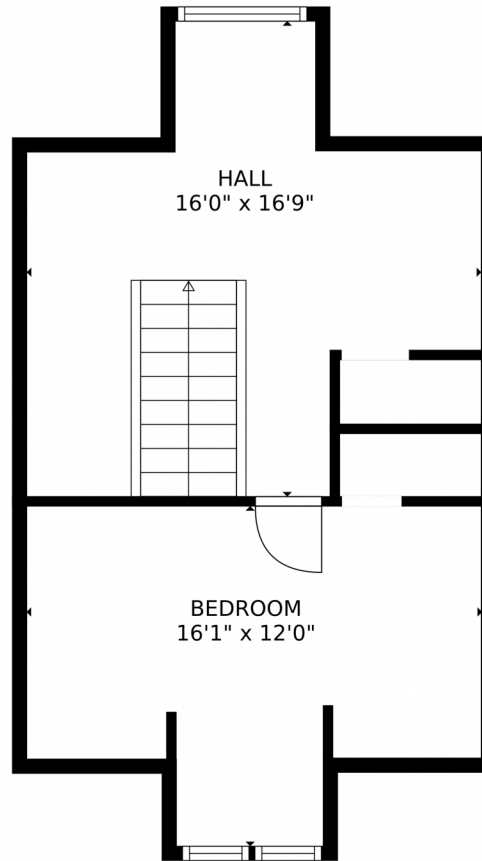


Disclaimer: Sizes and Dimensions are Approximate, Actual May Vary.



**Taylor Haas**  
303-665-7368  
taylorh@coloradorpm.com  
<https://www.coloradorpm.com/available-rental-properties-denv>





GROSS INTERNAL AREA  
Below Ground: 17 sq. ft, FLOOR 2: 871 sq. ft, FLOOR 3: 294 sq. ft  
EXCLUDED AREAS: UNFINISHED BASEMENT: 218 sq. ft, GARAGE: 260 sq. ft, PORCH: 129 sq. ft,  
PATIO: 673 sq. ft, FIREPLACE: 4 sq. ft, LOW CEILING: 87 sq. ft  
TOTAL: 1182 sq. ft  
MEASUREMENTS CALCULATED BY V1Photos.com ARE DEEMED HIGHLY RELIABLE BUT NOT GUARANTEED.

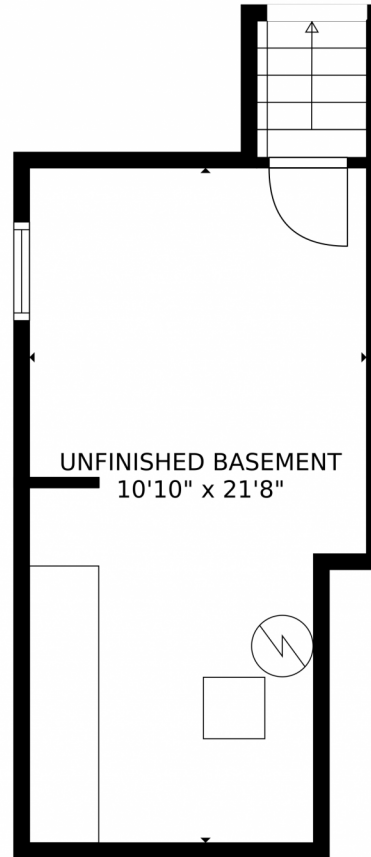


Disclaimer: Sizes and Dimensions are Approximate, Actual May Vary.



**Taylor Haas**  
303-665-7368  
taylorh@coloradorpm.com  
<https://www.coloradorpm.com/available-rental-properties-denver>





GROSS INTERNAL AREA  
Below Ground: 17 sq. ft, FLOOR 2: 871 sq. ft, FLOOR 3: 294 sq. ft  
EXCLUDED AREAS: UNFINISHED BASEMENT: 218 sq. ft, GARAGE: 260 sq. ft, PORCH: 129 sq. ft,  
PATIO: 673 sq. ft, FIREPLACE: 4 sq. ft, LOW CEILING: 87 sq. ft  
TOTAL: 1182 sq. ft  
MEASUREMENTS CALCULATED BY V1Photos.com ARE DEEMED HIGHLY RELIABLE BUT NOT GUARANTEED.



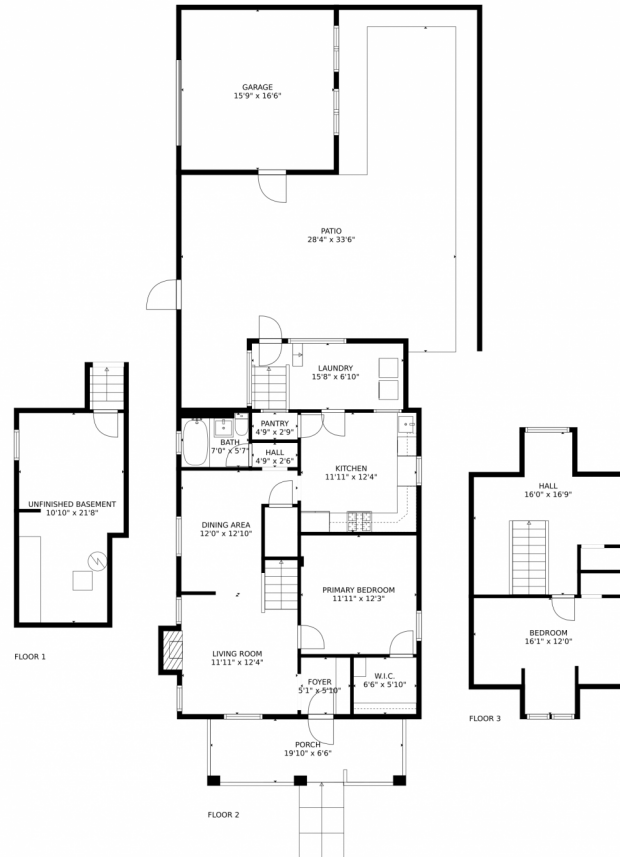
Disclaimer: Sizes and Dimensions are Approximate, Actual May Vary.



**Taylor Haas**  
303-665-7368  
taylorh@coloradorpm.com  
<https://www.coloradorpm.com/available-rental-properties-denver>



# 719 West 1st Avenue, Denver, CO 80223 – All Levels



GROSS INTERNAL AREA  
Below Ground: 17 sq. ft, FLOOR 2: 871 sq. ft, FLOOR 3: 294 sq. ft  
EXCLUDED AREAS: UNFINISHED BASEMENT: 218 sq. ft, GARAGE: 260 sq. ft, PORCH: 129 sq. ft,  
PATIO: 673 sq. ft, FIREPLACE: 4 sq. ft, LOW CEILING: 87 sq. ft  
TOTAL: 1182 sq. ft  
MEASUREMENTS CALCULATED BY V1Photos.com ARE DEEMED HIGHLY RELIABLE BUT NOT GUARANTEED.



Disclaimer: Sizes and Dimensions are Approximate, Actual May Vary.



**Taylor Haas**  
303-665-7368  
taylorh@coloradorpm.com  
<https://www.coloradorpm.com/available-rental-properties-denv>



Scan code  
for more  
property  
details

