

 Single Family

 2140 SQFT

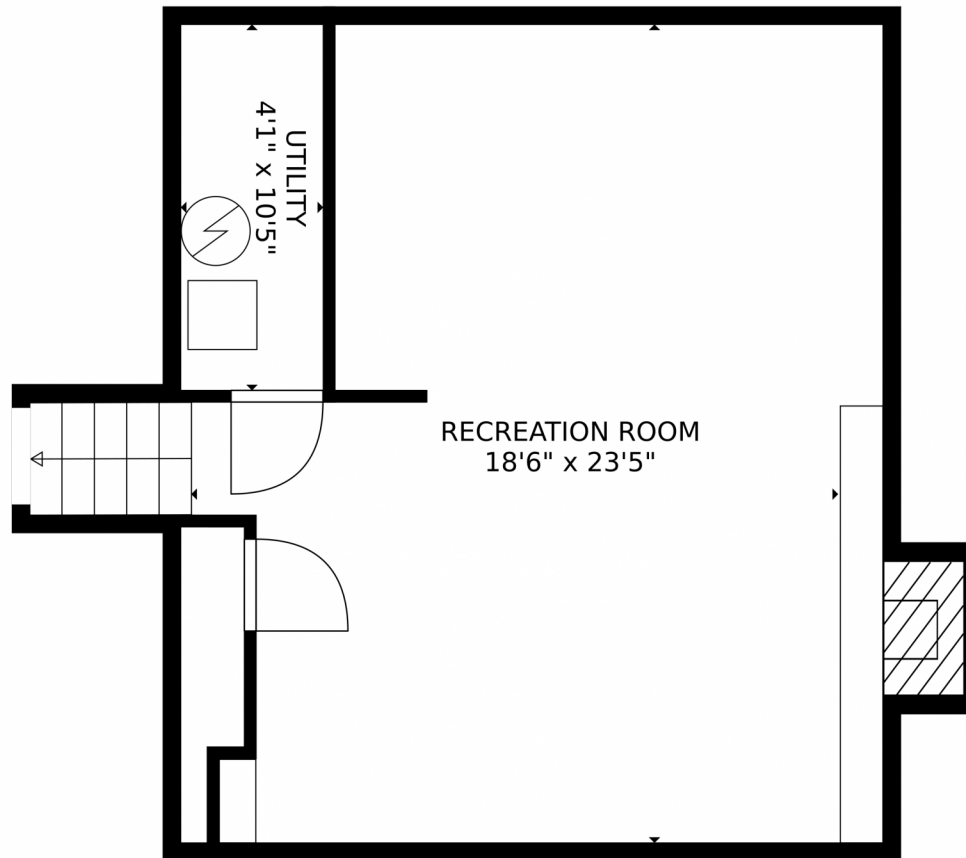
 4 Beds

 3/1 Baths



Taylor Haas
 303-665-7368
 taylorh@coloradorpm.com
<https://www.coloradorpm.com/available-rental-properties-denver>





GROSS INTERNAL AREA
Below Ground: 472 sq. ft, Below Ground: 430 sq. ft, FLOOR 3: 526 sq. ft, FLOOR 4: 547 sq. ft
EXCLUDED AREAS: UNDEFINED: 14 sq. ft, FIREPLACE: 13 sq. ft, GARAGE: 270 sq. ft,
PORCH: 34 sq. ft, PATIO: 255 sq. ft
TOTAL: 1975 sq. ft
MEASUREMENTS CALCULATED BY V1Photos.com ARE DEEMED HIGHLY RELIABLE BUT NOT GUARANTEED.

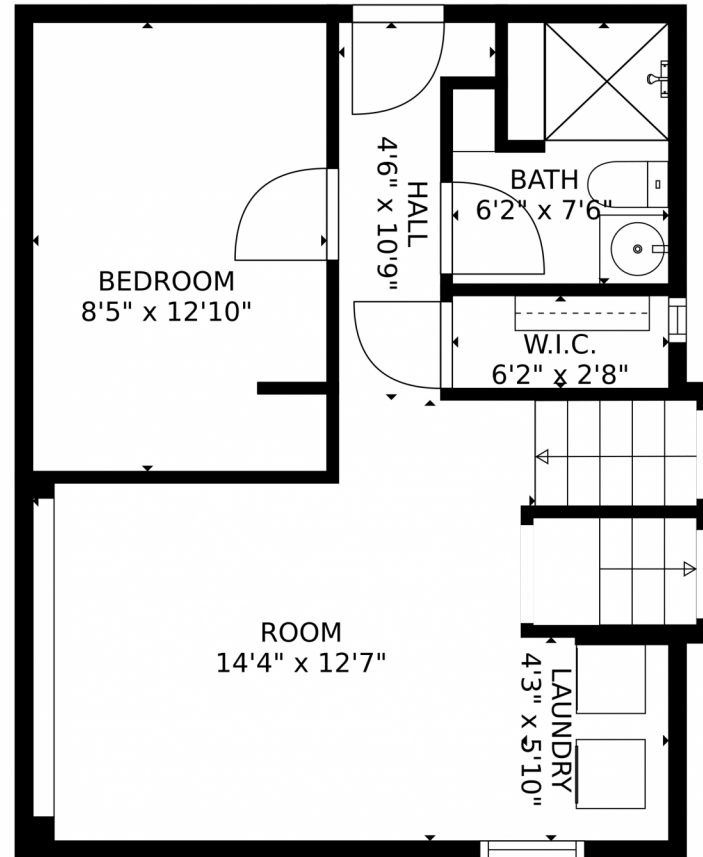


Disclaimer: Sizes and Dimensions are Approximate, Actual May Vary.



Taylor Haas
303-665-7368
taylorh@coloradorpm.com
<https://www.coloradorpm.com/available-rental-properties-denver>





GROSS INTERNAL AREA
Below Ground: 472 sq. ft. Below Ground: 430 sq. ft. FLOOR 3: 526 sq. ft. FLOOR 4: 547 sq. ft.
EXCLUDED AREAS: UNDEFINED: 14 sq. ft. FIREPLACE: 13 sq. ft. GARAGE: 270 sq. ft.
PORCH: 34 sq. ft. PATIO: 255 sq. ft.
TOTAL: 1975 sq. ft.
MEASUREMENTS CALCULATED BY V1Photos.COM ARE DEEMED HIGHLY RELIABLE BUT NOT GUARANTEED.



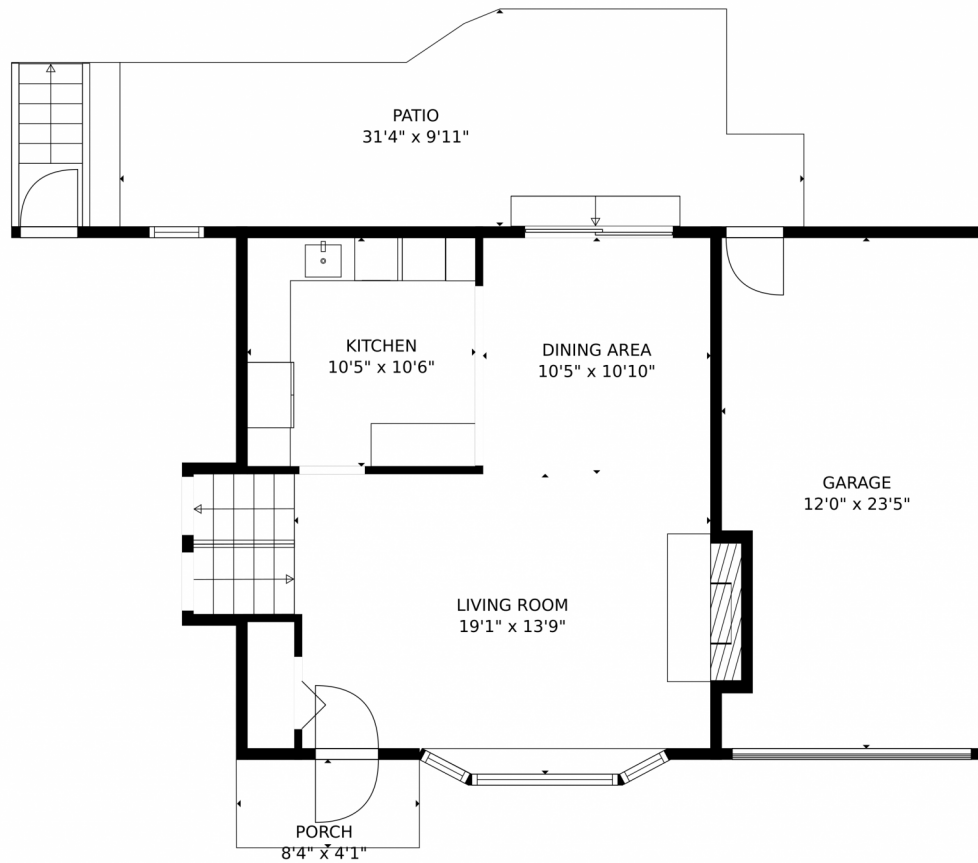
Disclaimer: Sizes and Dimensions are Approximate, Actual May Vary.



Taylor Haas
303-665-7368
taylorh@coloradorpm.com
<https://www.coloradorpm.com/available-rental-properties-denver>



7270 Metropolitan Street, Colorado Springs, CO 80911 — Main Level



GROSS INTERNAL AREA
Below Ground: 472 sq. ft. Below Ground: 430 sq. ft. FLOOR 3: 526 sq. ft. FLOOR 4: 547 sq. ft.
EXCLUDED AREAS: UNDEFINED: 14 sq. ft. FIREPLACE: 13 sq. ft. GARAGE: 270 sq. ft.
PORCH: 34 sq. ft. PATIO: 255 sq. ft.
TOTAL: 1975 sq. ft.
MEASUREMENTS CALCULATED BY V1Photos.COM ARE DEEMED HIGHLY RELIABLE BUT NOT GUARANTEED.



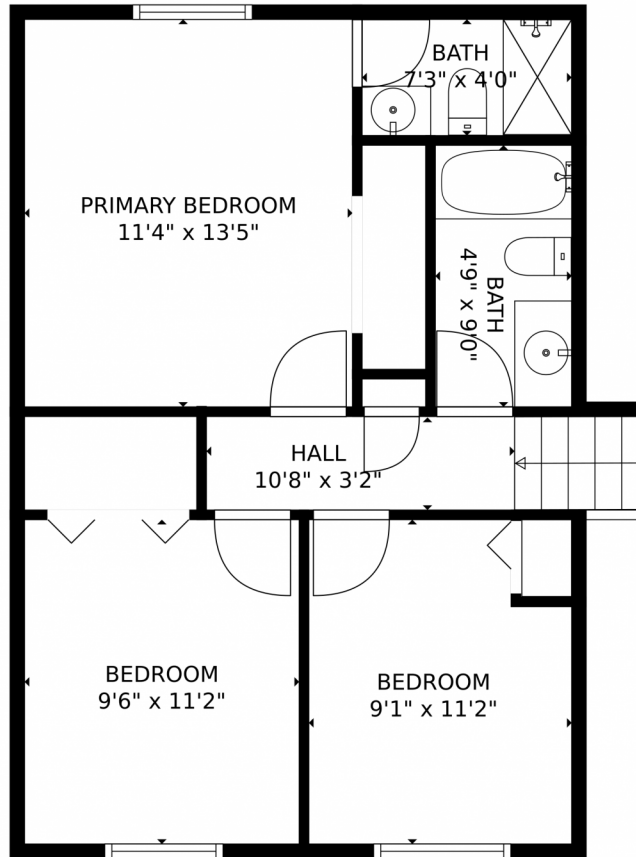
Disclaimer: Sizes and Dimensions are Approximate, Actual May Vary.



Taylor Haas
303-665-7368
taylorh@coloradorpm.com
<https://www.coloradorpm.com/available-rental-properties-denver>



7270 Metropolitan Street, Colorado Springs, CO 80911 – Upper Level



GROSS INTERNAL AREA
Below Ground: 472 sq. ft. Below Ground: 430 sq. ft. FLOOR 3: 526 sq. ft. FLOOR 4: 547 sq. ft.
EXCLUDED AREAS: UNDEFINED: 14 sq. ft. FIREPLACE: 13 sq. ft. GARAGE: 270 sq. ft.
PORCH: 34 sq. ft. PATIO: 255 sq. ft.
TOTAL: 1975 sq. ft.
MEASUREMENTS CALCULATED BY V1Photos.COM ARE DEEMED HIGHLY RELIABLE BUT NOT GUARANTEED.



Disclaimer: Sizes and Dimensions are Approximate, Actual May Vary.



Taylor Haas
303-665-7368
taylorh@coloradorpm.com
<https://www.coloradorpm.com/available-rental-properties-denver>



7270 Metropolitan Street, Colorado Springs, CO 80911 – All Levels



GROSS INTERNAL AREA
Below Ground: 472 sq. ft. Below Ground: 430 sq. ft. FLOOR 3: 526 sq. ft. FLOOR 4: 547 sq. ft.
EXCLUDED AREAS: UNDEFINED: 14 sq. ft. FIREPLACE: 13 sq. ft. GARAGE: 270 sq. ft.
PORCH: 34 sq. ft. PATIO: 255 sq. ft.
TOTAL: 1975 sq. ft.
MEASUREMENTS CALCULATED BY V1Photos.com ARE DEEMED HIGHLY RELIABLE BUT NOT GUARANTEED.



Disclaimer: Sizes and Dimensions are Approximate, Actual May Vary.



Taylor Haas
303-665-7368
taylorh@coloradorpm.com
<https://www.coloradorpm.com/available-rental-properties-denver>

