



2334 Dinosaur Drive  
 Erie, CO 80516  
 COMMUNITY: Flatiron Meadows

MLS # IR997243  
 PRICE \$938,000



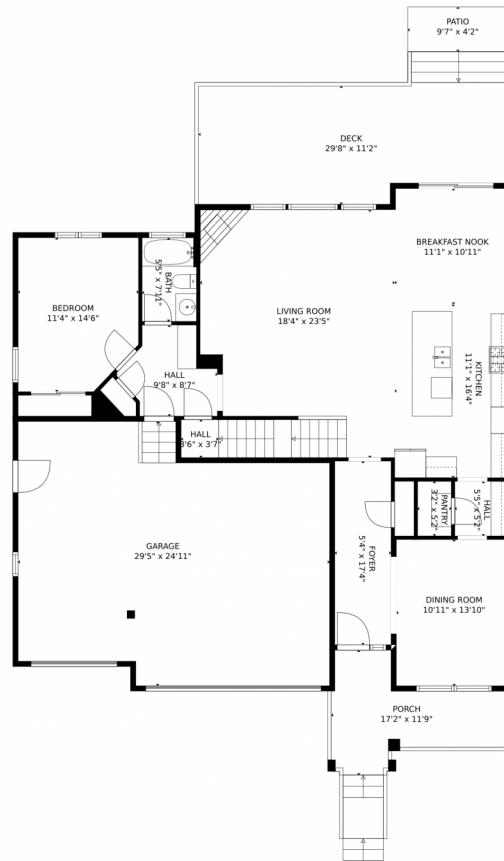
 Single Family  
  4415 SQFT  
  5 Beds  
  4 Baths  
  3 Car  
  0.16 Acre



**Carolyn Bleicher**  
 303-219-1771  
 carolyn@carolynbleicher.com



# 2334 Dinosaur Drive, Erie, CO 80516 – Main Level



GROSS INTERNAL AREA  
Below Ground: 0 sq. ft, FLOOR 2: 1343 sq. ft, FLOOR 3: 1519 sq. ft  
EXCLUDED AREAS: UNFINISHED BASEMENT: 1226 sq. ft, DECK: 353 sq. ft, PATIO: 40 sq. ft,  
PORCH: 125 sq. ft, GARAGE: 650 sq. ft, OPEN TO BELOW: 437 sq. ft  
TOTAL: 2862 sq. ft  
MEASUREMENTS CALCULATED BY V1Photos.COM ARE DEEMED HIGHLY RELIABLE BUT NOT GUARANTEED.



Disclaimer: Sizes and Dimensions are Approximate, Actual May Vary.



**Carolyn Bleicher**  
303-219-1771  
carolyn@carolynbleicher.com



# 2334 Dinosaur Drive, Erie, CO 80516 – Upper Level



GROSS INTERNAL AREA  
Below Ground: 0 sq. ft, FLOOR 2: 1343 sq. ft, FLOOR 3: 1519 sq. ft  
EXCLUDED AREAS: UNFINISHED BASEMENT: 1226 sq. ft, DECK: 353 sq. ft, PATIO: 40 sq. ft.  
PORCH: 125 sq. ft, GARAGE: 650 sq. ft, OPEN TO BELOW: 437 sq. ft  
TOTAL: 2862 sq. ft  
MEASUREMENTS CALCULATED BY V1Photos.COM ARE DEEMED HIGHLY RELIABLE BUT NOT GUARANTEED.



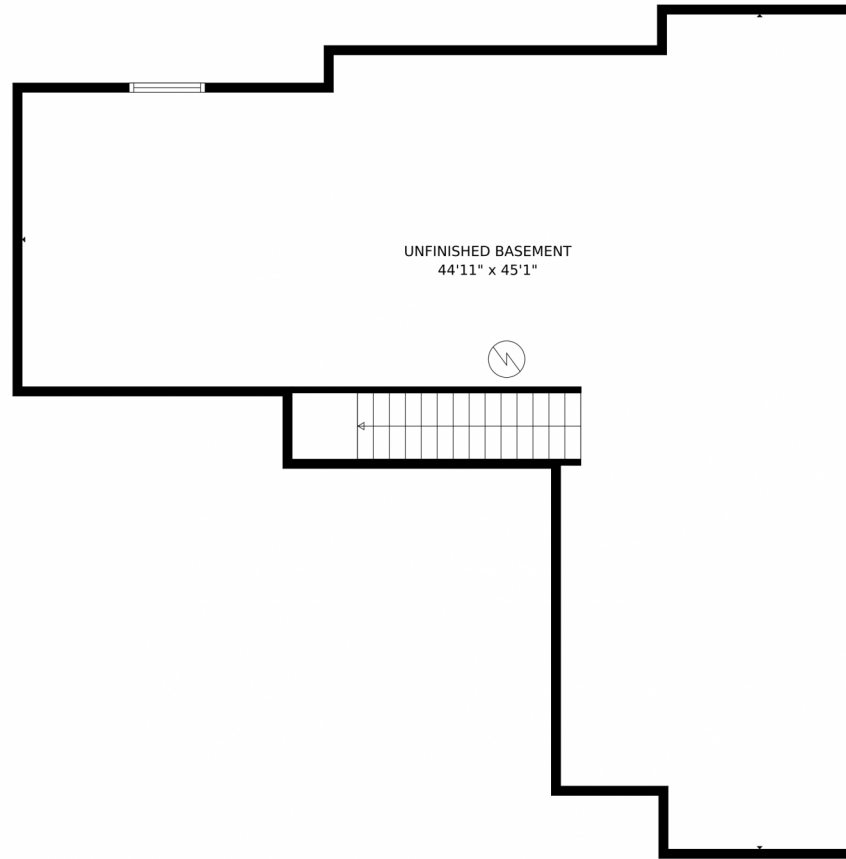
Disclaimer: Sizes and Dimensions are Approximate, Actual May Vary.



**Carolyn Bleicher**  
303-219-1771  
carolyn@carolynbleicher.com



Scan code  
for more  
property  
details



GROSS INTERNAL AREA  
Below Ground: 0 sq. ft, FLOOR 2: 1343 sq. ft, FLOOR 3: 1519 sq. ft  
EXCLUDED AREAS: UNFINISHED BASEMENT: 1226 sq. ft, DECK: 353 sq. ft, PATIO: 40 sq. ft,  
PORCH: 125 sq. ft, GARAGE: 650 sq. ft, OPEN TO BELOW: 437 sq. ft  
TOTAL: 2862 sq. ft  
MEASUREMENTS CALCULATED BY V1Photos.com ARE DEEMED HIGHLY RELIABLE BUT NOT GUARANTEED.



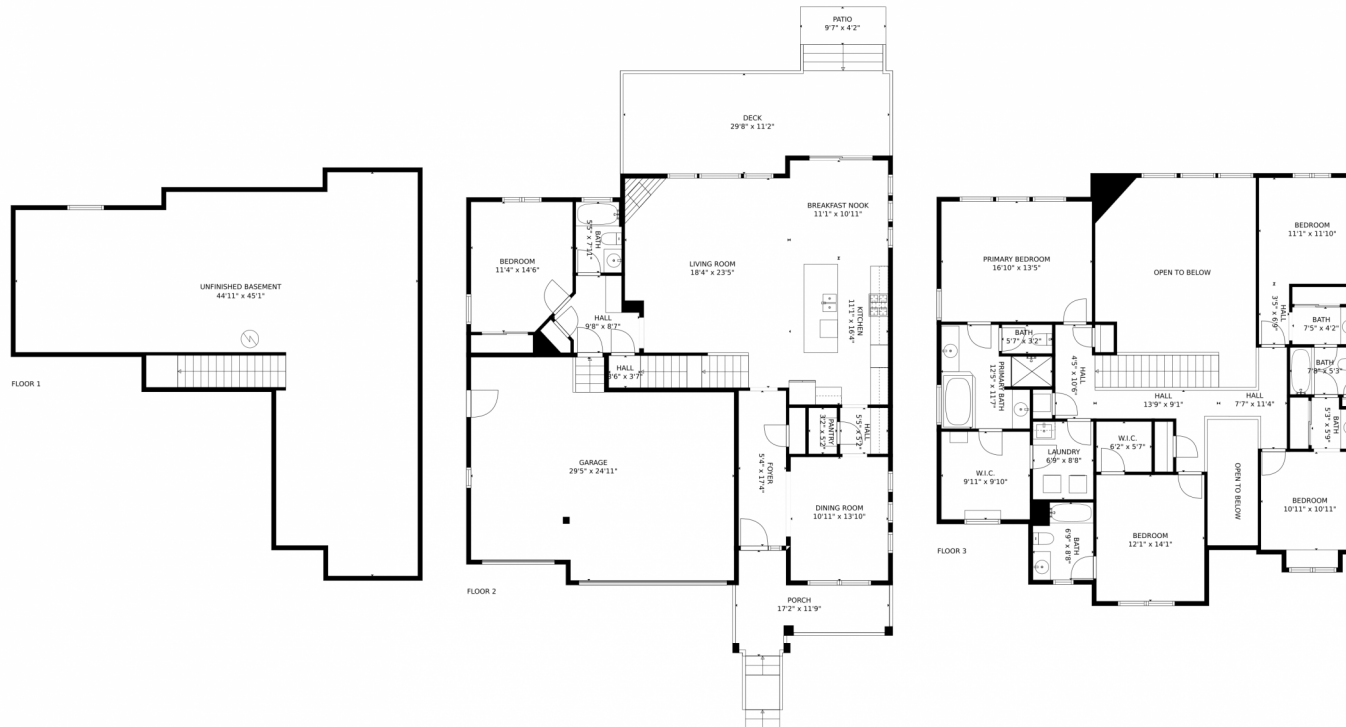
Disclaimer: Sizes and Dimensions are Approximate, Actual May Vary.



**Carolyn Bleicher**  
303-219-1771  
carolyn@carolynbleicher.com



# 2334 Dinosaur Drive, Erie, CO 80516 – All Levels



GROSS INTERNAL AREA  
 Below Ground: 0 sq. ft, FLOOR 2: 1343 sq. ft, FLOOR 3: 1519 sq. ft  
 EXCLUDED AREAS: UNFINISHED BASEMENT: 1226 sq. ft, DECK: 353 sq. ft, PATIO: 40 sq. ft,  
 PORCH: 125 sq. ft, GARAGE: 650 sq. ft, OPEN TO BELOW: 437 sq. ft  
 TOTAL: 2862 sq. ft  
 MEASUREMENTS CALCULATED BY V1Photos.COM ARE DEEMED HIGHLY RELIABLE BUT NOT GUARANTEED.



Disclaimer: Sizes and Dimensions are Approximate, Actual May Vary.



**Carolyn Bleicher**  
 303-219-1771  
 carolyn@carolynbleicher.com



Scan code  
 for more  
 property  
 details

