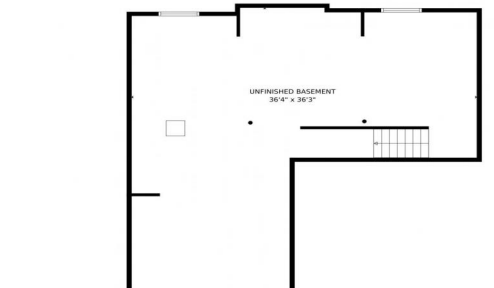





1768 Summer Bloom Drive, Windsor, CO 80550 - Lower Level



 Single Family

 2556 SQFT

 4 Beds

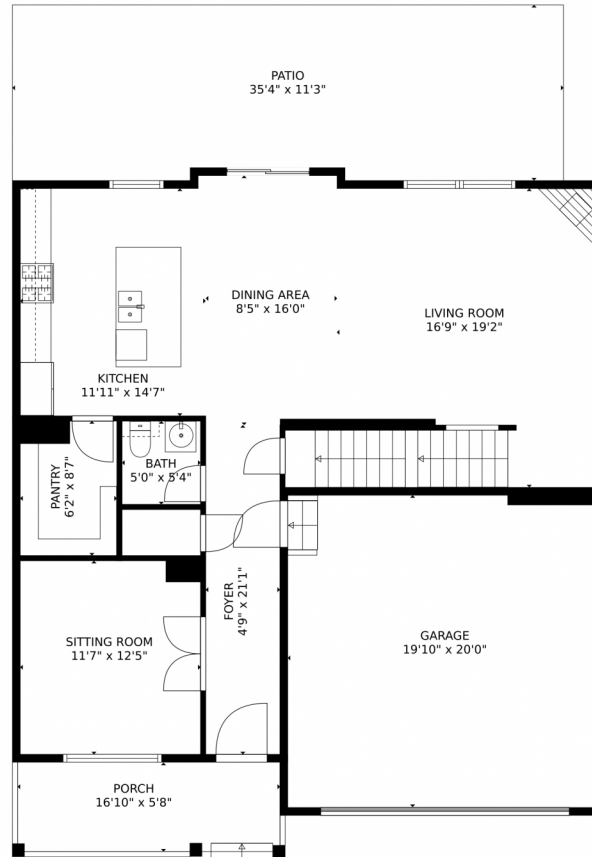
 3 Baths



Taylor Haas
303-665-7368
taylorh@coloradorpm.com
<https://www.coloradorpm.com/available-rental-properties-denver>



1768 Summer Bloom Drive, Windsor, CO 80550 – Main Level



GROSS INTERNAL AREA
Below Ground: 0 sq. ft, FLOOR 2: 1001 sq. ft, FLOOR 3: 1410 sq. ft
EXCLUDED AREAS: UNFINISHED BASEMENT: 960 sq. ft, PORCH: 96 sq. ft, PATIO: 390 sq. ft.
GARAGE: 398 sq. ft
TOTAL: 2411 sq. ft
MEASUREMENTS CALCULATED BY V1Photos.com ARE DEEMED HIGHLY RELIABLE BUT NOT GUARANTEED.



Disclaimer: Sizes and Dimensions are Approximate, Actual May Vary.



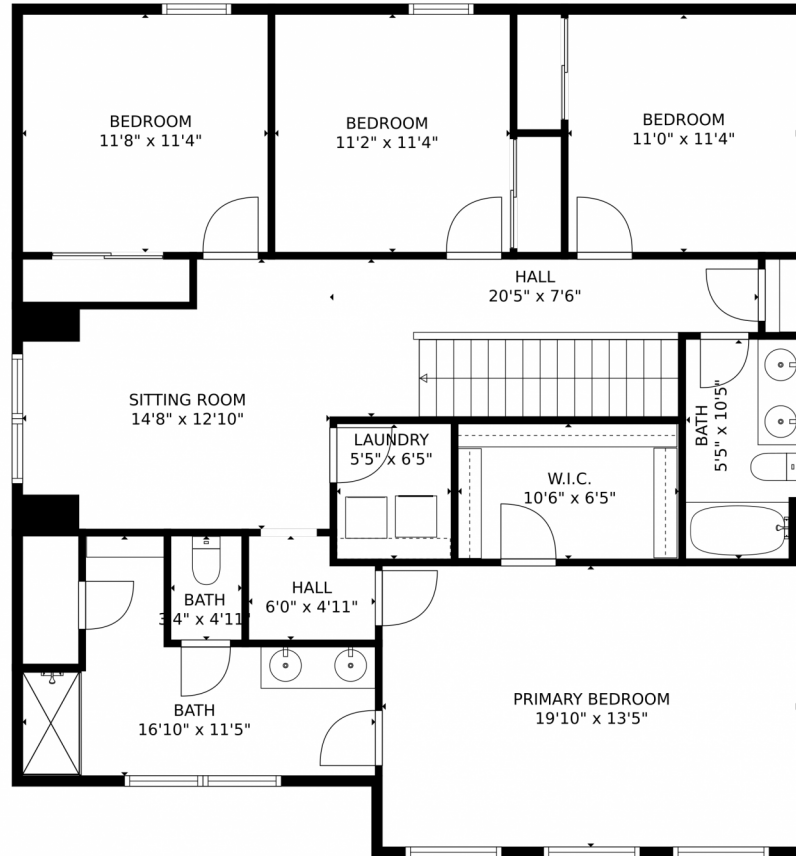
Taylor Haas
303-665-7368
taylorh@coloradorpm.com
<https://www.coloradorpm.com/available-rental-properties-denver>



Scan code
for more
property
details



1768 Summer Bloom Drive, Windsor, CO 80550 – Upper Level



GROSS INTERNAL AREA
Below Ground: 0 sq. ft, FLOOR 2: 1001 sq. ft, FLOOR 3: 1410 sq. ft
EXCLUDED AREAS: UNFINISHED BASEMENT: 960 sq. ft, PORCH: 96 sq. ft, PATIO: 390 sq. ft.
GARAGE: 398 sq. ft
TOTAL: 2411 sq. ft
MEASUREMENTS CALCULATED BY V1Photos.COM ARE DEEMED HIGHLY RELIABLE BUT NOT GUARANTEED.



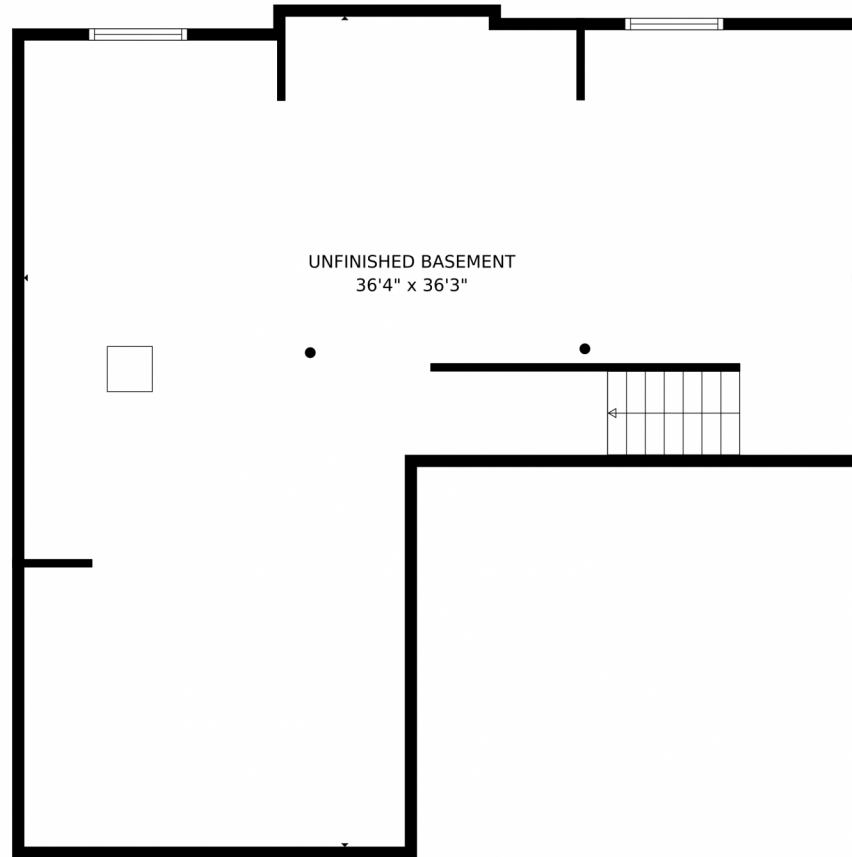
Disclaimer: Sizes and Dimensions are Approximate, Actual May Vary.



Taylor Haas
303-665-7368
taylorh@coloradorpm.com
<https://www.coloradorpm.com/available-rental-properties-denver>



1768 Summer Bloom Drive, Windsor, CO 80550 – Lower Level



GROSS INTERNAL AREA
Below Ground: 0 sq. ft, FLOOR 2: 1001 sq. ft, FLOOR 3: 1410 sq. ft
EXCLUDED AREAS: UNFINISHED BASEMENT: 960 sq. ft, PORCH: 96 sq. ft, PATIO: 390 sq. ft,
GARAGE: 398 sq. ft
TOTAL: 2411 sq. ft
MEASUREMENTS CALCULATED BY V1Photos.com ARE DEEMED HIGHLY RELIABLE BUT NOT GUARANTEED.



Disclaimer: Sizes and Dimensions are Approximate, Actual May Vary.



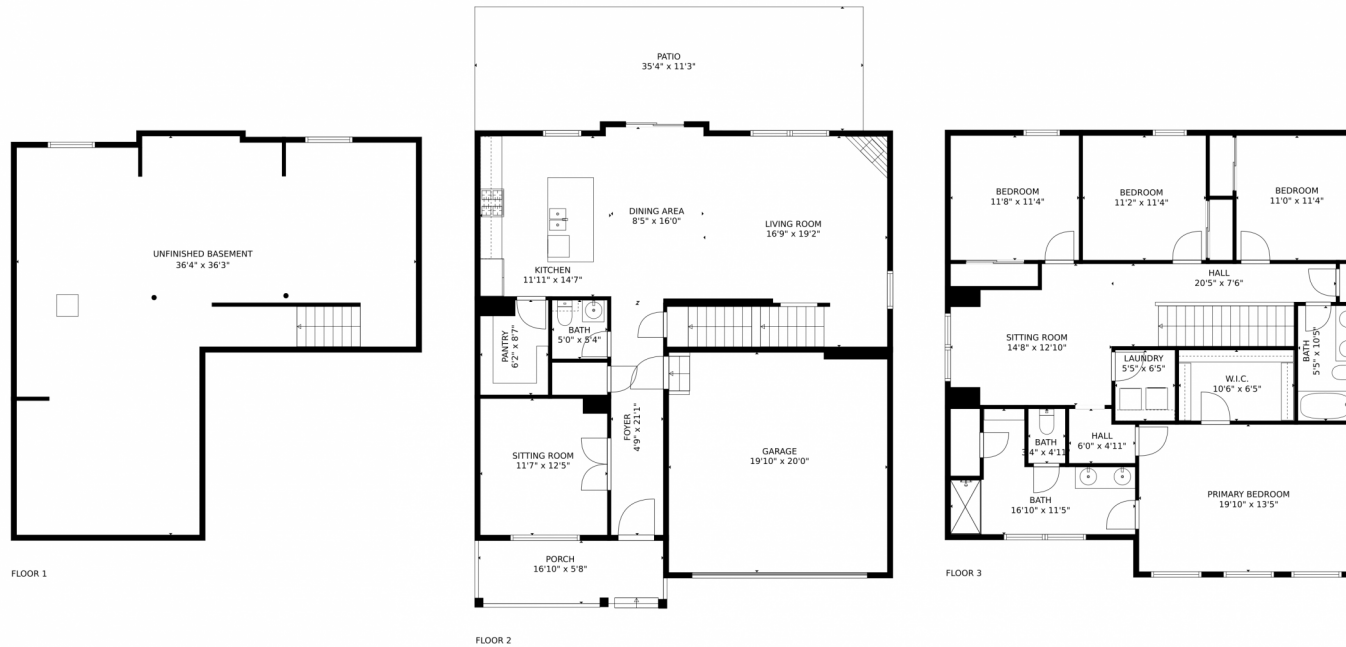
Taylor Haas
303-665-7368
taylorh@coloradorpm.com
<https://www.coloradorpm.com/available-rental-properties-denver>



Scan code
for more
property
details



1768 Summer Bloom Drive, Windsor, CO 80550 – All Levels



GROSS INTERNAL AREA
Below Ground: 0 sq. ft, FLOOR 2: 1001 sq. ft, FLOOR 3: 1410 sq. ft
EXCLUDED AREAS: UNFINISHED BASEMENT: 960 sq. ft, PORCH: 96 sq. ft, PATIO: 390 sq. ft,
GARAGE: 398 sq. ft
TOTAL: 2411 sq. ft
MEASUREMENTS CALCULATED BY V1Photos.COM ARE DEEMED HIGHLY RELIABLE BUT NOT GUARANTEED.



Disclaimer: Sizes and Dimensions are Approximate, Actual May Vary.



Taylor Haas
303-665-7368
taylorh@coloradorpm.com
<https://www.coloradorpm.com/available-rental-properties-denver>



Scan code
for more
property
details

