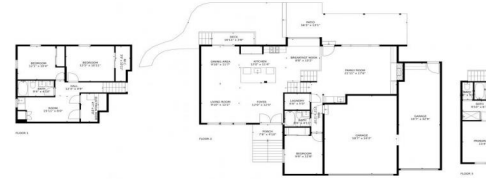




7483 East Mercer Place, Denver, CO 80237 - All Floors



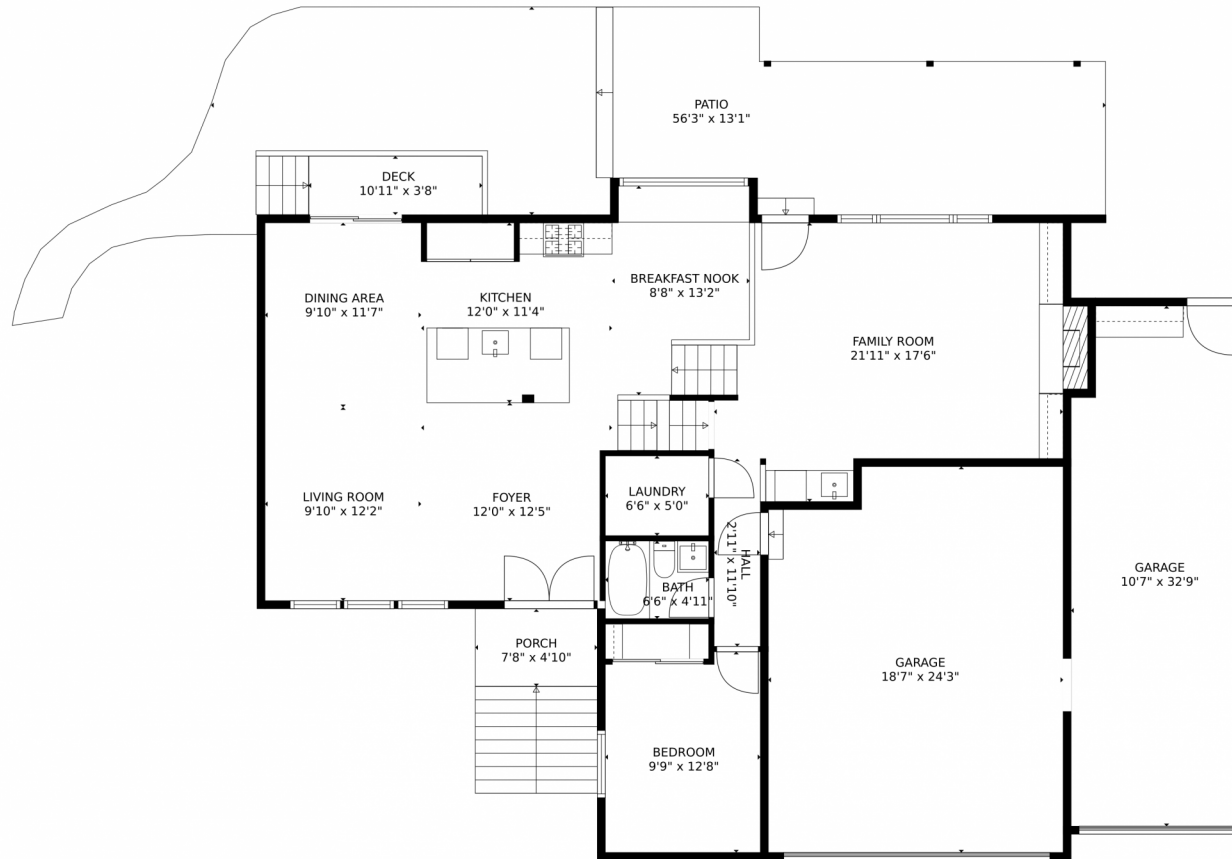
- Single Family
- 2757 SQFT
- 6 Beds
- 5 Baths
- 3 Car
- 0.2 Acre



Julio Quezada
720-882-3970
julio@thepristineproperties.com



7483 East Mercer Place, Denver, CO 80237 – 1st Floor



GROSS INTERNAL AREA
Below Ground: 556 sq. ft, FLOOR 2: 1215 sq. ft, FLOOR 3: 818 sq. ft
EXCLUDED AREAS: ELECTRICAL ROOM: 50 sq. ft, GARAGE: 772 sq. ft, PORCH: 37 sq. ft,
PATIO: 642 sq. ft, DECK: 40 sq. ft, FIREPLACE: 5 sq. ft
TOTAL: 2589 sq. ft
MEASUREMENTS CALCULATED BY V1Photos.com ARE DEEMED HIGHLY RELIABLE BUT NOT GUARANTEED.



Disclaimer: Sizes and Dimensions are Approximate, Actual May Vary.

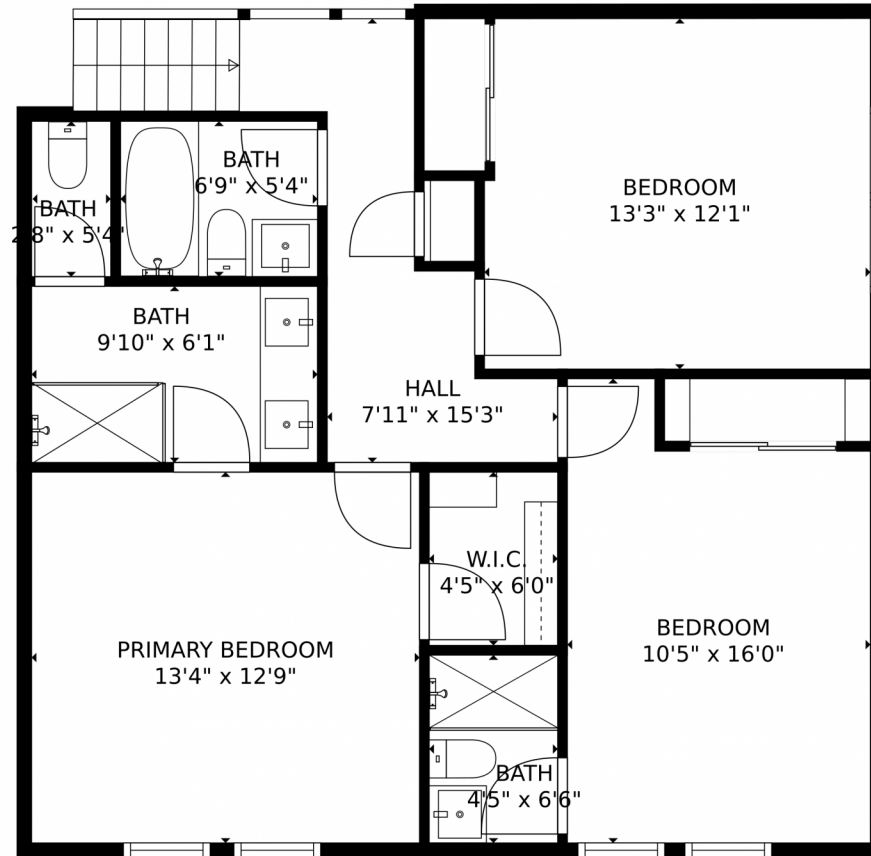


Julio Quezada
720-882-3970
julio@thepristineproperties.com



Scan code
for more
property
details





GROSS INTERNAL AREA
Below Ground: 556 sq. ft, FLOOR 2: 1215 sq. ft, FLOOR 3: 818 sq. ft
EXCLUDED AREAS: ELECTRICAL ROOM: 50 sq. ft, GARAGE: 772 sq. ft, PORCH: 37 sq. ft,
PATIO: 642 sq. ft, DECK: 40 sq. ft, FIREPLACE: 5 sq. ft
TOTAL: 2589 sq. ft
MEASUREMENTS CALCULATED BY V1Photos.COM ARE DEEMED HIGHLY RELIABLE BUT NOT GUARANTEED.



Disclaimer: Sizes and Dimensions are Approximate, Actual May Vary.



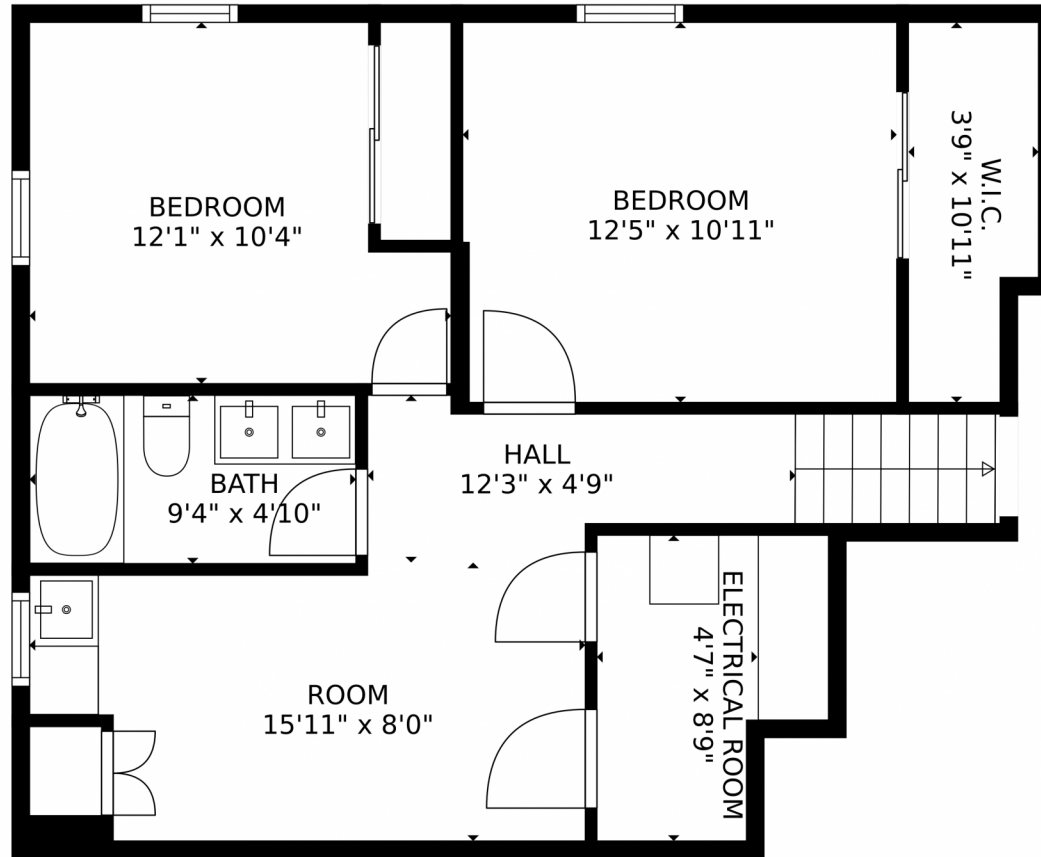
Julio Quezada
720-882-3970
julio@thepristineproperties.com



Scan code
for more
property
details



7483 East Mercer Place, Denver, CO 80237 – Basement



GROSS INTERNAL AREA
Below Ground: 556 sq. ft, FLOOR 2: 1215 sq. ft, FLOOR 3: 818 sq. ft
EXCLUDED AREAS: ELECTRICAL ROOM: 50 sq. ft, GARAGE: 772 sq. ft, PORCH: 37 sq. ft,
PATIO: 642 sq. ft, DECK: 40 sq. ft, FIREPLACE: 5 sq. ft
TOTAL: 2589 sq. ft
MEASUREMENTS CALCULATED BY V1Photos.com ARE DEEMED HIGHLY RELIABLE BUT NOT GUARANTEED.



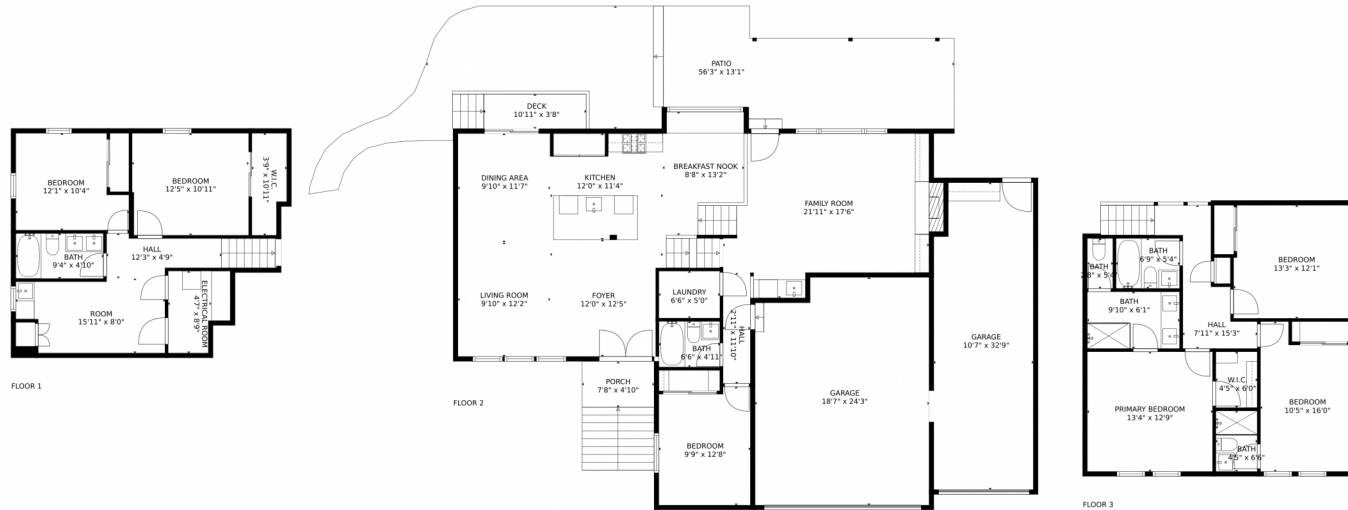
Disclaimer: Sizes and Dimensions are Approximate, Actual May Vary.



Julio Quezada
720-882-3970
julio@thepristineproperties.com



7483 East Mercer Place, Denver, CO 80237 – All Floors



GROSS INTERNAL AREA
Below Ground: 556 sq. ft, FLOOR 2: 1215 sq. ft, FLOOR 3: 818 sq. ft
EXCLUDED AREAS: ELECTRICAL ROOM: 50 sq. ft, GARAGE: 772 sq. ft, PORCH: 37 sq. ft,
PATIO: 642 sq. ft, DECK: 40 sq. ft, FIREPLACE: 5 sq. ft
TOTAL: 2589 sq. ft
MEASUREMENTS CALCULATED BY V1Photos.com ARE DEEMED HIGHLY RELIABLE BUT NOT GUARANTEED.



Disclaimer: Sizes and Dimensions are Approximate, Actual May Vary.



Julio Quezada
720-882-3970
julio@thepristineproperties.com



Scan code
for more
property
details

