

## The Villas at Skyway



Single Family



1757 SQFT



3 Beds



3/1 Baths



2 Car



0.05 Acre

## PROPERTY DETAILS

This modern townhome offers stunning mountain views and features 3 bedrooms and 3.5 bathrooms. With 1757 square feet of living space spread over three floors, it provides ample room for comfortable living. Located in the lower Skyway neighborhood, it is conveniently situated near popular amenities such as the Little Dipper Pool and the Broadmoor Hotel. The community is adjacent to Bear Creek Park, offering easy access to miles of trails for outdoor enthusiasts. The townhome is also within the boundaries of the prestigious Cheyenne Mountain School District 12.



**Eddie Hurt**  
719-339-3765  
ehurt@erashields.com  
<https://www.ColoradoSpringsRealEstate.com>



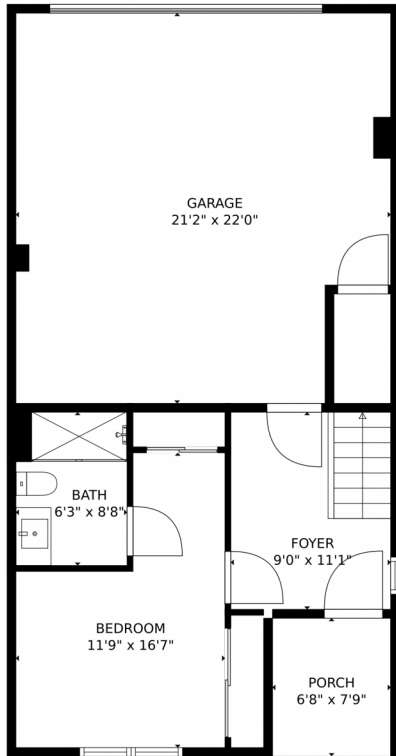
**Michelle Blessing**  
719-649-4200  
mblessing@erashields.com



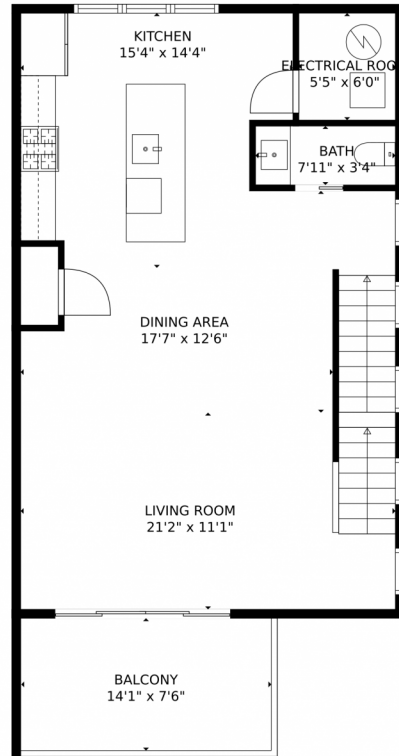
Scan code  
for more  
property  
details



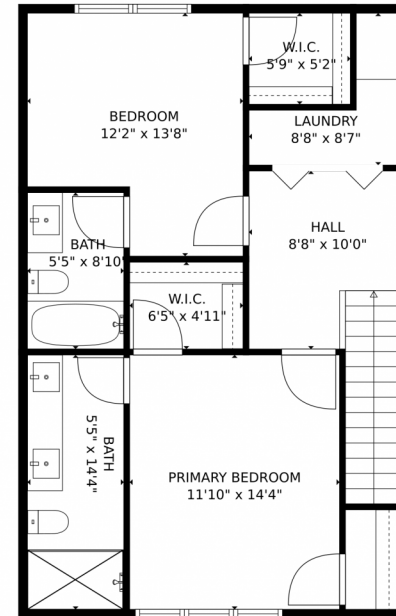
# 885 Paget Point, Colorado Springs, CO 80905 – All Levels



FLOOR 1



FLOOR 2



FLOOR 3

**TOTAL: 1751 sq. ft**  
 FLOOR 1: 364 sq. ft, FLOOR 2: 677 sq. ft, FLOOR 3: 710 sq. ft  
 EXCLUDED AREAS: GARAGE: 437 sq. ft, PORCH: 52 sq. ft, ELECTRICAL ROOM: 33 sq. ft,  
 BALCONY: 113 sq. ft

MEASUREMENTS CALCULATED BY V1Photos.COM ARE DEEMED HIGHLY RELIABLE BUT NOT GUARANTEED.



Disclaimer: Sizes and Dimensions are Approximate, Actual May Vary.



**Eddie Hurt**  
 719-339-3765  
 ehurt@erashields.com  
<https://www.ColoradoSpringsRealEstate.com>



**Michelle Blessing**  
 719-649-4200  
 mblessing@erashields.com



Scan code  
 for more  
 property  
 details

