



2438 Episa Avenue  
Coconut Creek, FL 33063

MLS # F10403874



Single Family



2068 SQFT

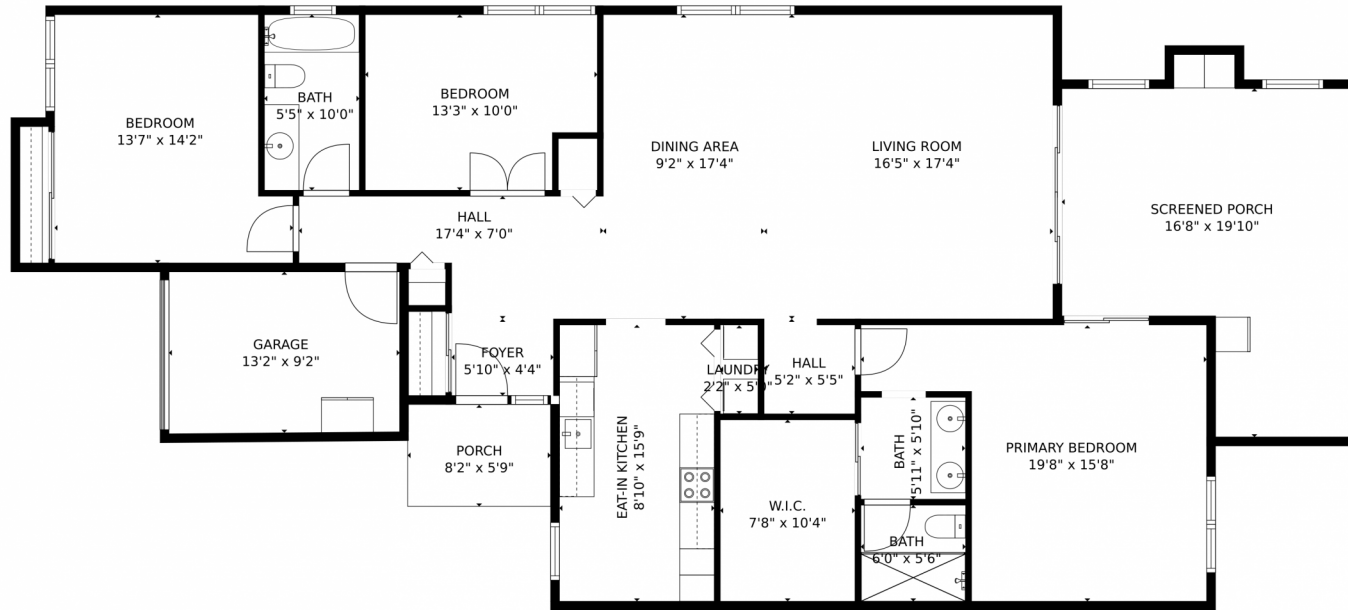


**Michael Topow**  
954-588-0379  
mtopow@kw.com



Scan code  
for more  
property  
details





GROSS INTERNAL AREA  
FLOOR 1: 1563 sq. ft  
EXCLUDED AREAS: SCREENED PORCH: 277 sq. ft, PORCH: 47 sq. ft, GARAGE: 120 sq. ft  
TOTAL: 1563 sq. ft  
MEASUREMENTS CALCULATED BY V1Photos.com ARE DEEMED HIGHLY RELIABLE BUT NOT GUARANTEED.



Disclaimer: Sizes and Dimensions are Approximate, Actual May Vary.



Michael Topow  
954-588-0379  
mtopow@kw.com

