



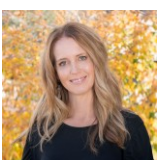
14025 Park Cove Drive
Broomfield, CO 80023



 Single Family
  4329 SQFT
  5 Beds
  4/1 Baths
  3 Car
  0.3 Acre

PROPERTY DETAILS

Beautifully maintained home in the sought-after Park Cove Enclave of McKay Landing, set on a 13,000+ sq ft lot with mature landscaping. Just steps from green space and Meridan Elementary. The inviting foyer leads to a spacious main level with new hardwood flooring and abundant natural light. A versatile flex room can serve as a second family room or office. The remodeled kitchen features soft-close cabinets, granite counters, and top-tier KitchenAid appliances. The cozy family room includes a gas fireplace, while the dining room boasts a stunning chandelier. Upstairs, the primary suite offers vaulted ceilings and a luxurious bath, alongside three additional bedrooms. The finished basement includes a large bedroom and rec room. Outdoor space is perfect for summer BBQs, with a short walk to the pool, trails, and local amenities.



Terri Ellerington

303-929-8116

terri@elevated-team.com

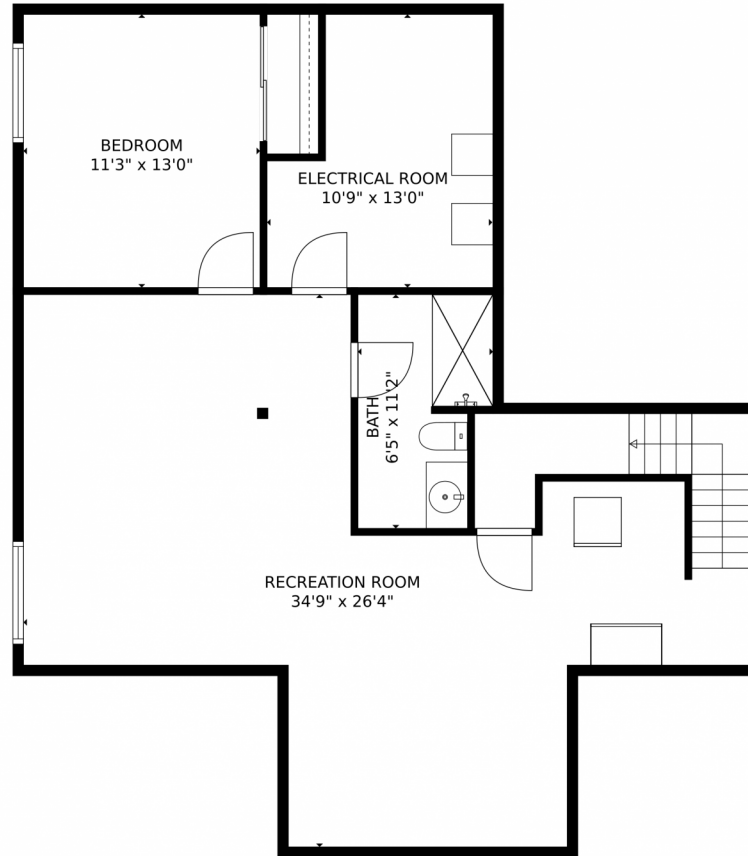
<https://www.remax.com/real-estate-agents/terri-ellerington-louisville-co/10205130>



Scan code
for more
property
details



14025 Park Cove Drive, Broomfield, CO 80023 – Lower Level



GROSS INTERNAL AREA
Below Ground: 836 sq. ft, FLOOR 2: 1452 sq. ft, FLOOR 3: 1377 sq. ft
EXCLUDED AREAS: ELECTRICAL ROOM: 121 sq. ft, GARAGE: 586 sq. ft, PORCH: 126 sq. ft,
PATIO: 450 sq. ft, UNDEFINED: 10 sq. ft
TOTAL: 3665 sq. ft
MEASUREMENTS CALCULATED BY V1Photos.com ARE DEEMED HIGHLY RELIABLE BUT NOT GUARANTEED.



Disclaimer: Sizes and Dimensions are Approximate, Actual May Vary.



Terri Ellerington

303-929-8116

terri@elevated-team.com

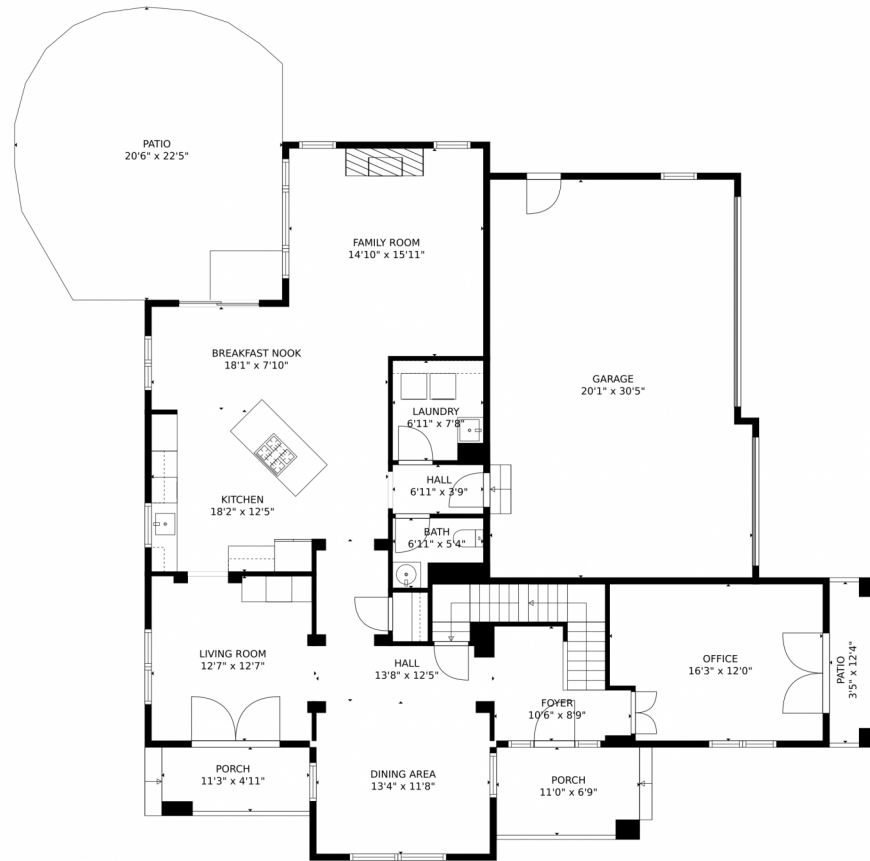
<https://www.remax.com/real-estate-agents/terri-ellerington-louisville-co/102051301>



Scan code
for more
property
details



14025 Park Cove Drive, Broomfield, CO 80023 – Main Level



GROSS INTERNAL AREA
Below Ground: 836 sq. ft, FLOOR 2: 1452 sq. ft, FLOOR 3: 1377 sq. ft
EXCLUDED AREAS: ELECTRICAL ROOM: 121 sq. ft, GARAGE: 586 sq. ft, PORCH: 126 sq. ft,
PATIO: 450 sq. ft, UNDEFINED: 10 sq. ft
TOTAL: 3665 sq. ft
MEASUREMENTS CALCULATED BY V1Photos.com ARE DEEMED HIGHLY RELIABLE BUT NOT GUARANTEED.



Disclaimer: Sizes and Dimensions are Approximate, Actual May Vary.



Terri Ellerington

303-929-8116

terri@elevated-team.com

<https://www.remax.com/real-estate-agents/terri-ellerington-louisville-co/102051301>



Scan code
for more
property
details



14025 Park Cove Drive, Broomfield, CO 80023 – Upper Level



GROSS INTERNAL AREA
Below Ground: 836 sq. ft, FLOOR 2: 1452 sq. ft, FLOOR 3: 1377 sq. ft
EXCLUDED AREAS: ELECTRICAL ROOM: 121 sq. ft, GARAGE: 586 sq. ft, PORCH: 126 sq. ft,
PATIO: 450 sq. ft, UNDEFINED: 10 sq. ft
TOTAL: 3665 sq. ft
MEASUREMENTS CALCULATED BY V1Photos.COM ARE DEEMED HIGHLY RELIABLE BUT NOT GUARANTEED.



Disclaimer: Sizes and Dimensions are Approximate, Actual May Vary.



Terri Ellerington

303-929-8116

terri@elevated-team.com

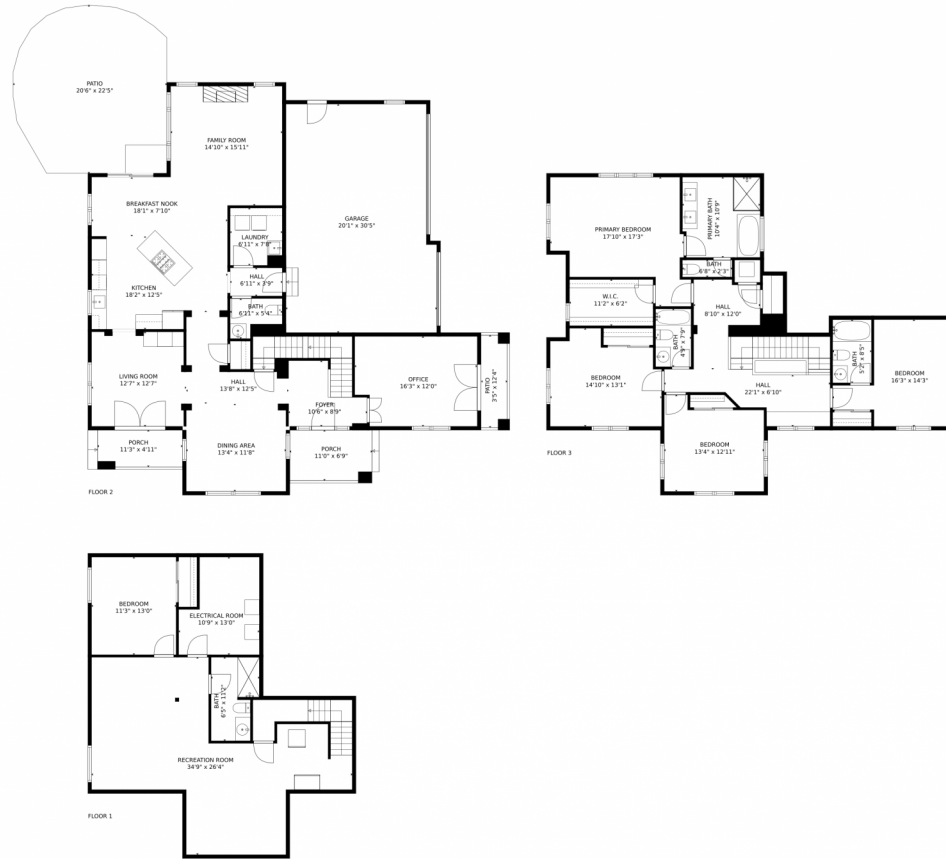
<https://www.remax.com/real-estate-agents/terri-ellerington-louisville-co/102051301>



Scan code
for more
property
details



14025 Park Cove Drive, Broomfield, CO 80023 – All Levels



GROSS INTERNAL AREA
Below Ground: 836 sq. ft, FLOOR 2: 1452 sq. ft, FLOOR 3: 1377 sq. ft
EXCLUDED AREAS: ELECTRICAL ROOM: 121 sq. ft, GARAGE: 586 sq. ft, PORCH: 126 sq. ft,
PATIO: 450 sq. ft, UNDEFINED: 10 sq. ft
TOTAL: 3665 sq. ft
MEASUREMENTS CALCULATED BY V1Photos.com ARE DEEMED HIGHLY RELIABLE BUT NOT GUARANTEED.



Disclaimer: Sizes and Dimensions are Approximate, Actual May Vary.



Terri Ellerington

303-929-8116

terri@elevated-team.com

<https://www.remax.com/real-estate-agents/terri-ellerington-louisville-co/102051301>



Scan code
for more
property
details

