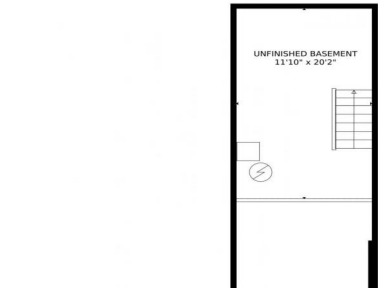





2147 North Marion Street, Denver, CO 80205 - 1st_floor_2147_marion_street_denver_with_dim



 Single Family

 980 SQFT

 2 Beds

 1/1 Baths

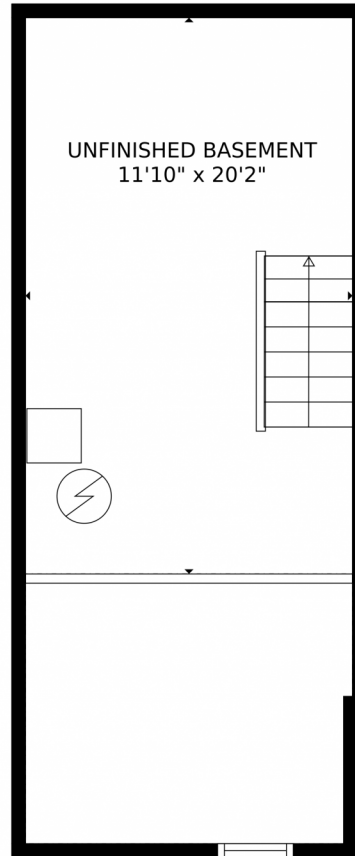


Taylor Haas
303-665-7368
taylorh@coloradorpm.com
<https://www.coloradorpm.com/available-rental-properties-denver>



Scan code
for more
property
details





GROSS INTERNAL AREA
Below Ground: 0 sq. ft, FLOOR 2: 548 sq. ft, FLOOR 3: 363 sq. ft
EXCLUDED AREAS: CRAWL SPACE: 116 sq. ft, UNFINISHED BASEMENT: 239 sq. ft, PATIO: 41 sq. ft,
PORCH: 36 sq. ft
TOTAL: 911 sq. ft
MEASUREMENTS CALCULATED BY V1Photos.com ARE DEEMED HIGHLY RELIABLE BUT NOT GUARANTEED.



Disclaimer: Sizes and Dimensions are Approximate, Actual May Vary.



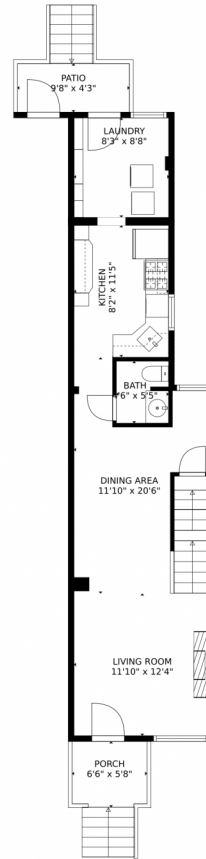
Taylor Haas
303-665-7368
taylorh@coloradorpm.com
<https://www.coloradorpm.com/available-rental-properties-denver>



Scan code
for more
property
details



2147 North Marion Street, Denver, CO 80205 – Main Level



GROSS INTERNAL AREA
Below Ground: 0 sq. ft, FLOOR 2: 548 sq. ft, FLOOR 3: 363 sq. ft
EXCLUDED AREAS: CRAWL SPACE: 116 sq. ft, UNFINISHED BASEMENT: 239 sq. ft, PATIO: 41 sq. ft,
PORCH: 36 sq. ft
TOTAL: 911 sq. ft
MEASUREMENTS CALCULATED BY V1Photos.com ARE DEEMED HIGHLY RELIABLE BUT NOT GUARANTEED.



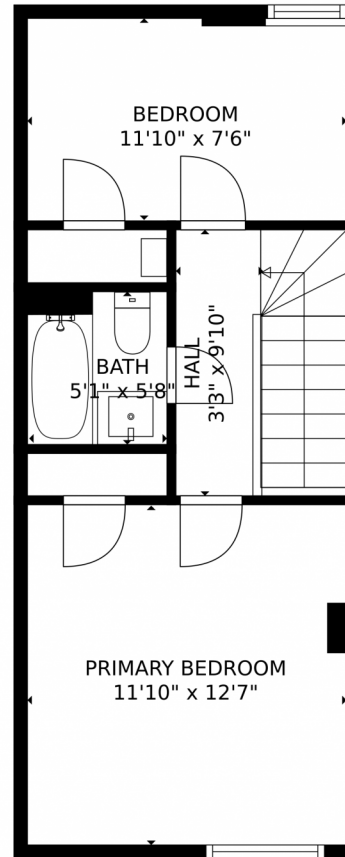
Disclaimer: Sizes and Dimensions are Approximate, Actual May Vary.



Taylor Haas
303-665-7368
taylorh@coloradorpm.com
<https://www.coloradorpm.com/available-rental-properties-denver>



2147 North Marion Street, Denver, CO 80205 – Second Level



GROSS INTERNAL AREA
Below Ground: 0 sq. ft, FLOOR 2: 548 sq. ft, FLOOR 3: 363 sq. ft
EXCLUDED AREAS: CRAWL SPACE: 116 sq. ft, UNFINISHED BASEMENT: 239 sq. ft, PATIO: 41 sq. ft,
PORCH: 36 sq. ft
TOTAL: 911 sq. ft
MEASUREMENTS CALCULATED BY V1Photos.com ARE DEEMED HIGHLY RELIABLE BUT NOT GUARANTEED.



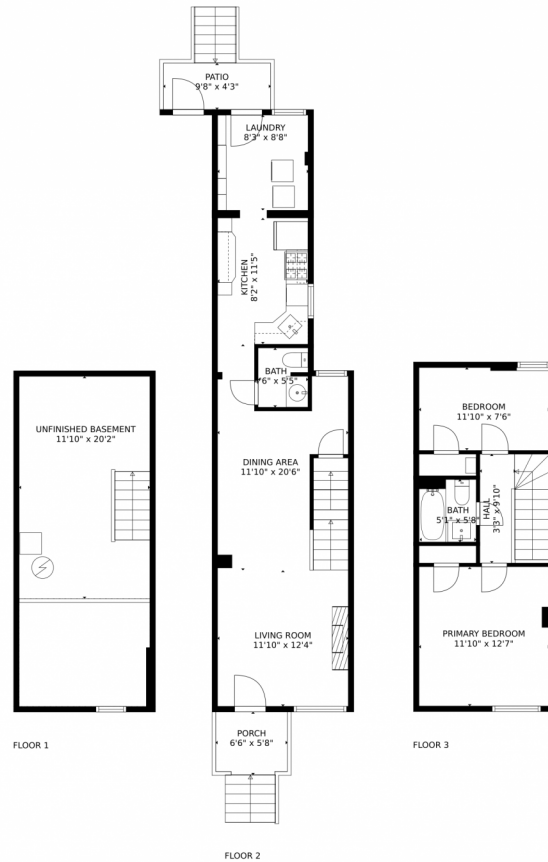
Disclaimer: Sizes and Dimensions are Approximate, Actual May Vary.



Taylor Haas
303-665-7368
taylorh@coloradorpm.com
<https://www.coloradorpm.com/available-rental-properties-denver>



2147 North Marion Street, Denver, CO 80205 – All Levels



GROSS INTERNAL AREA
Below Ground: 0 sq. ft, FLOOR 2: 548 sq. ft, FLOOR 3: 363 sq. ft
EXCLUDED AREAS: CRAWL SPACE: 116 sq. ft, UNFINISHED BASEMENT: 239 sq. ft, PATIO: 41 sq. ft,
PORCH: 36 sq. ft
TOTAL: 911 sq. ft
MEASUREMENTS CALCULATED BY V1Photos.com ARE DEEMED HIGHLY RELIABLE BUT NOT GUARANTEED.



Disclaimer: Sizes and Dimensions are Approximate, Actual May Vary.



Taylor Haas

303-665-7368

taylorh@coloradorpm.com

<https://www.coloradorpm.com/available-rental-properties-denver>



Scan code
for more
property
details

