





 Single Family

 4008 SQFT

 4 Beds

 3 Baths

 2 Car

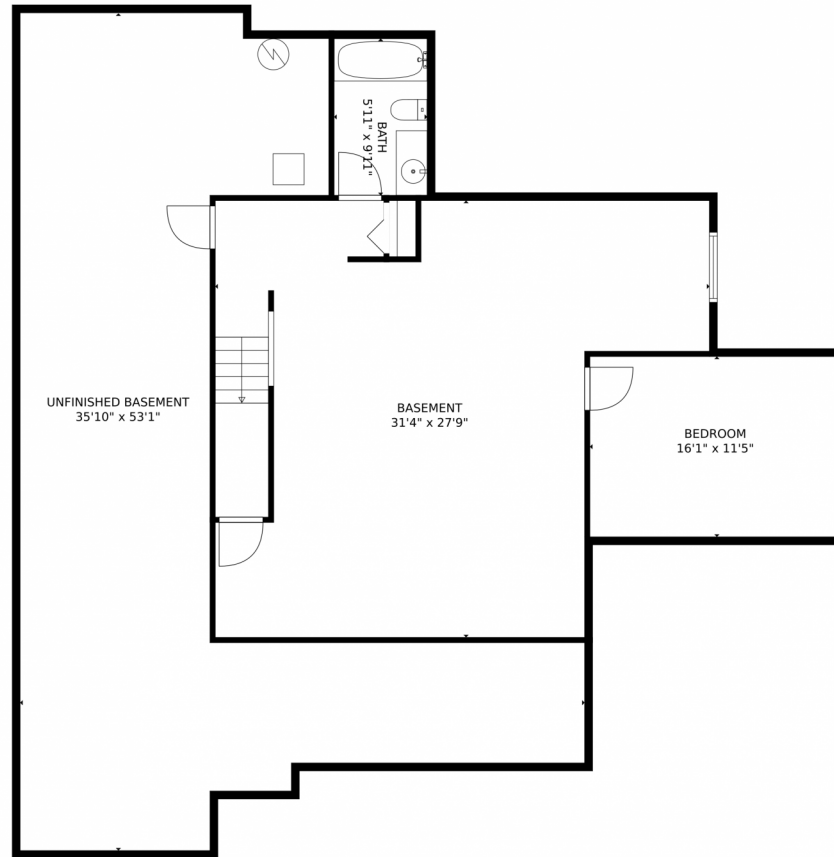
 0.24 Acre



Karla Laferriere
970-703-4112
karlalaferriere@windermere.com



4955 Hornbeam Court, Loveland, CO 80538 – Lower Level



GROSS INTERNAL AREA
Below Ground: 1000 sq. ft, FLOOR 2: 1955 sq. ft
EXCLUDED AREAS: UNFINISHED BASEMENT: 909 sq. ft, GARAGE: 554 sq. ft, PORCH: 278 sq. ft,
DECK: 171 sq. ft, PATIO: 332 sq. ft
TOTAL: 2955 sq. ft
MEASUREMENTS CALCULATED BY V1Photos.com ARE DEEMED HIGHLY RELIABLE BUT NOT GUARANTEED.



Disclaimer: Sizes and Dimensions are Approximate, Actual May Vary.

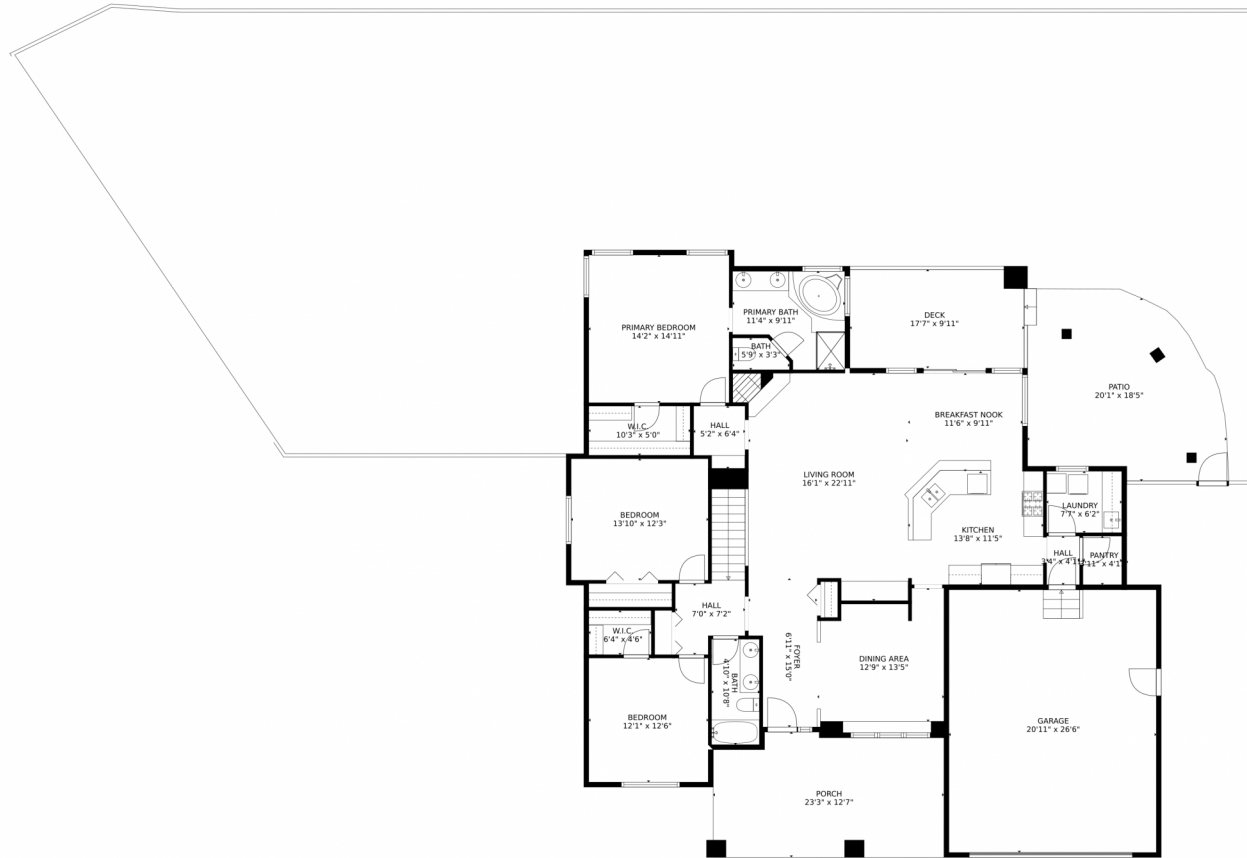


Karla Laferriere
970-703-4112
karlalaferriere@windermere.com



Scan code
for more
property
details

4955 Hornbeam Court, Loveland, CO 80538 – Main Level



GROSS INTERNAL AREA
Below Ground: 1000 sq. ft, FLOOR 2: 1955 sq. ft
EXCLUDED AREAS: UNFINISHED BASEMENT: 909 sq. ft, GARAGE: 554 sq. ft, PORCH: 278 sq. ft,
DECK: 171 sq. ft, PATIO: 332 sq. ft
TOTAL: 2955 sq. ft
MEASUREMENTS CALCULATED BY V1Photos.COM ARE DEEMED HIGHLY RELIABLE BUT NOT GUARANTEED.



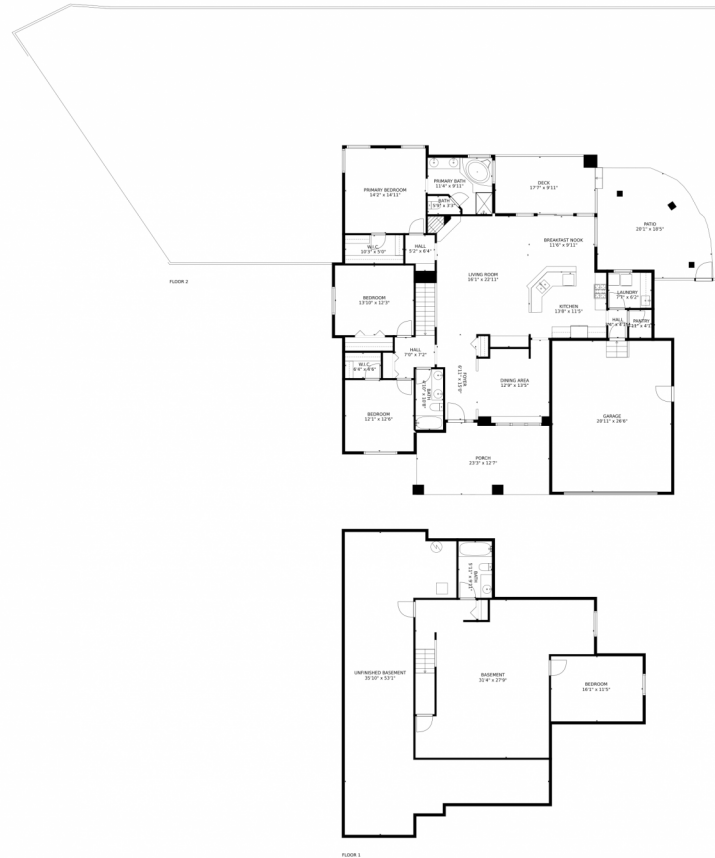
Disclaimer: Sizes and Dimensions are Approximate, Actual May Vary.



Karla Laferriere
970-703-4112
karlalaferriere@windermere.com



4955 Hornbeam Court, Loveland, CO 80538 – All Levels



GROSS INTERNAL AREA
Below Ground: 1000 sq. ft, FLOOR 2: 1955 sq. ft
EXCLUDED AREAS: UNFINISHED BASEMENT: 909 sq. ft, GARAGE: 554 sq. ft, PORCH: 278 sq. ft,
DECK: 171 sq. ft, PATIO: 332 sq. ft
TOTAL: 2955 sq. ft
MEASUREMENTS CALCULATED BY V1Photos.com ARE DEEMED HIGHLY RELIABLE BUT NOT GUARANTEED.



Disclaimer: Sizes and Dimensions are Approximate, Actual May Vary.



Karla Laferriere
970-703-4112
karlalaferriere@windermere.com

