



 Single Family  2224 SQFT  5 Beds  2 Baths  1 Car  0.17 Acre

PROPERTY DETAILS

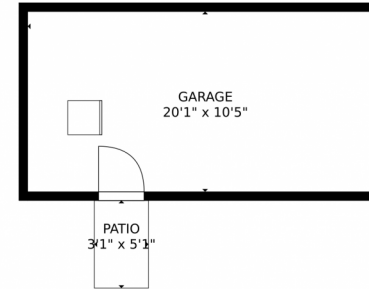
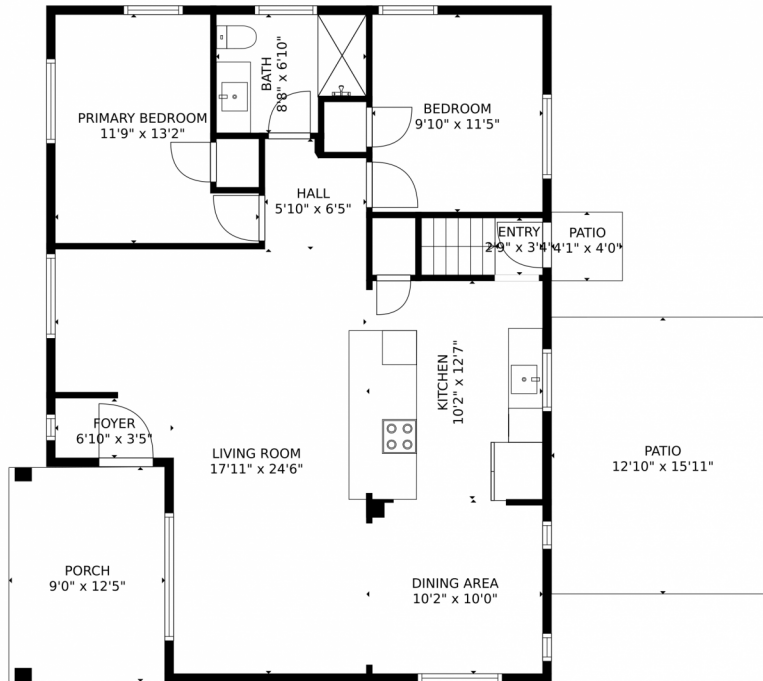
Newly updated modern ranch home with 5 bedrooms and 2 full baths. Features a stunning waterfall island and modern brushed gold finishes. Kitchen flows to a covered patio and private yard. Designer choices throughout, including new appliances, flooring, light fixtures, and paint. Located in the peaceful Honeymoon Manor neighborhood with easy access to parks, recreation center, and breweries. Short drive to Downtown Denver.



Kifle Leulseged
720-891-6979
kleulseged@gmail.com



3620 Niagara Street, Denver, CO 80207 – Main Level



GROSS INTERNAL AREA
Below Ground: 878 sq. ft. FLOOR 2: 984 sq. ft.
EXCLUDED AREAS: UTILITY: 98 sq. ft., GARAGE: 208 sq. ft., PORCH: 111 sq. ft.,
PATIO: 237 sq. ft.
TOTAL: 1862 sq. ft.
MEASUREMENTS CALCULATED BY V1Photos.com ARE DEEMED HIGHLY RELIABLE BUT NOT GUARANTEED.



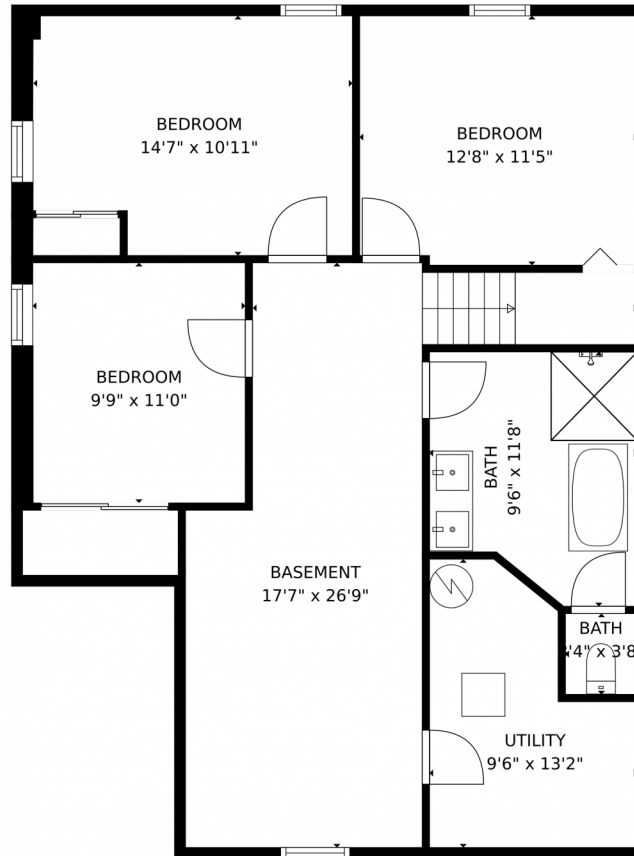
Disclaimer: Sizes and Dimensions are Approximate, Actual May Vary.



Kifle Leulseged
720-891-6979
kleulseged@gmail.com



3620 Niagara Street, Denver, CO 80207 – Lower Level



GROSS INTERNAL AREA
Below Ground: 878 sq. ft. FLOOR 2: 984 sq. ft.
EXCLUDED AREAS: UTILITY: 98 sq. ft. GARAGE: 208 sq. ft. PORCH: 111 sq. ft.
PATIO: 237 sq. ft.
TOTAL: 1862 sq. ft.
MEASUREMENTS CALCULATED BY V1Photos.com ARE DEEMED HIGHLY RELIABLE BUT NOT GUARANTEED.



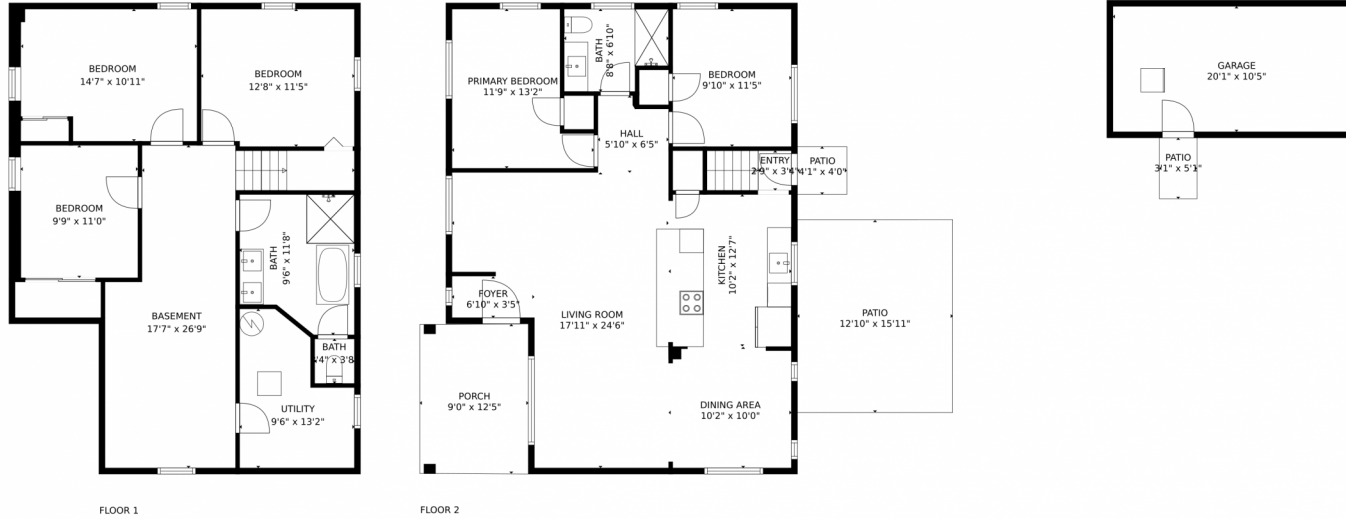
Disclaimer: Sizes and Dimensions are Approximate, Actual May Vary.



Kifle Leulseged
720-891-6979
kleulseged@gmail.com



3620 Niagara Street, Denver, CO 80207 – All Levels



GROSS INTERNAL AREA
Below Ground: 878 sq. ft, FLOOR 2: 984 sq. ft.
EXCLUDED AREAS: UTILITY: 98 sq. ft, GARAGE: 208 sq. ft, PORCH: 111 sq. ft.
PATIO: 237 sq. ft
TOTAL: 1862 sq. ft
MEASUREMENTS CALCULATED BY V1Photos.com ARE DEEMED HIGHLY RELIABLE BUT NOT GUARANTEED.



Disclaimer: Sizes and Dimensions are Approximate, Actual May Vary.



Kifle Leulseged
720-891-6979
kleulseged@gmail.com



Scan code
for more
property
details