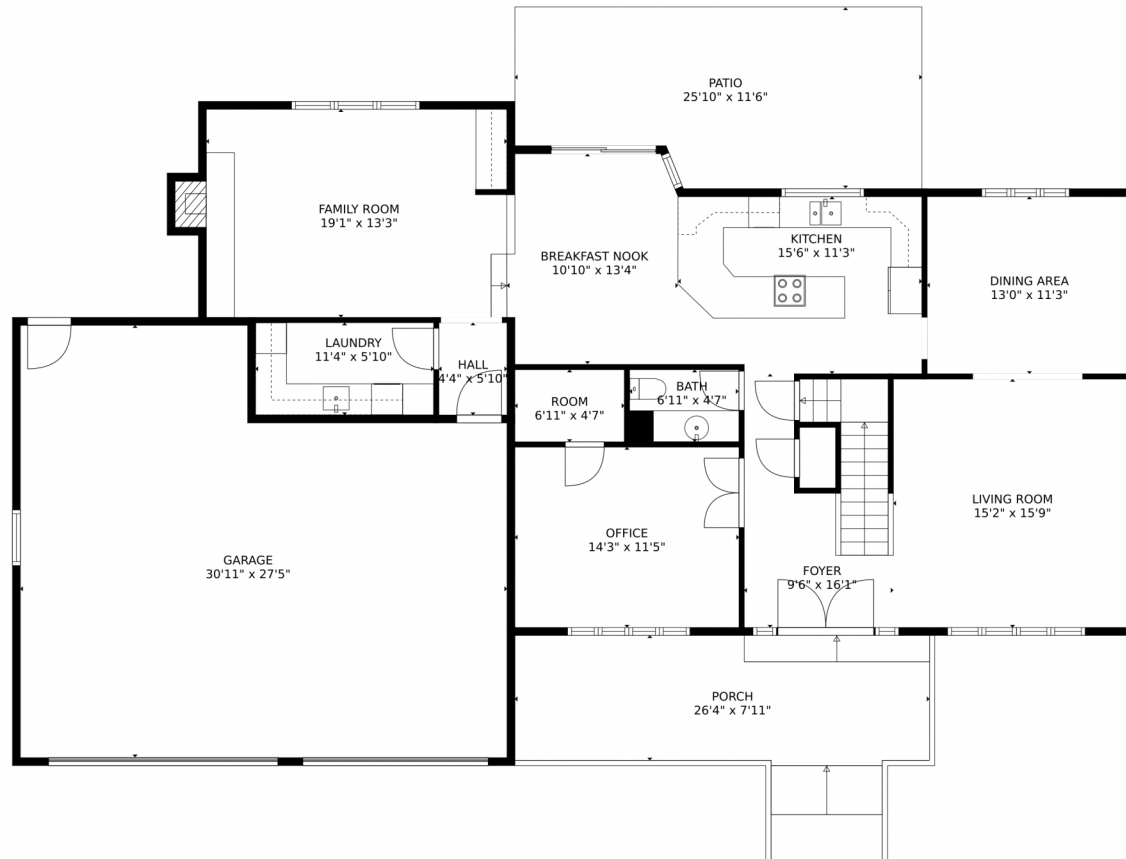


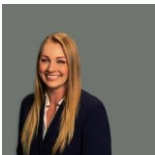
1234 49th Avenue, Greeley, CO 80634 – Main Level



GROSS INTERNAL AREA
Below Ground: 259 sq. ft, FLOOR 2: 1459 sq. ft, FLOOR 3: 1225 sq. ft
EXCLUDED AREAS: STORAGE: 292 sq. ft, UNFINISHED BASEMENT: 520 sq. ft, GARAGE: 746 sq. ft,
PORCH: 254 sq. ft, PATIO: 271 sq. ft, FIREPLACE: 4 sq. ft
TOTAL: 2943 sq. ft
MEASUREMENTS CALCULATED BY V1Photos.COM ARE DEEMED HIGHLY RELIABLE BUT NOT GUARANTEED.

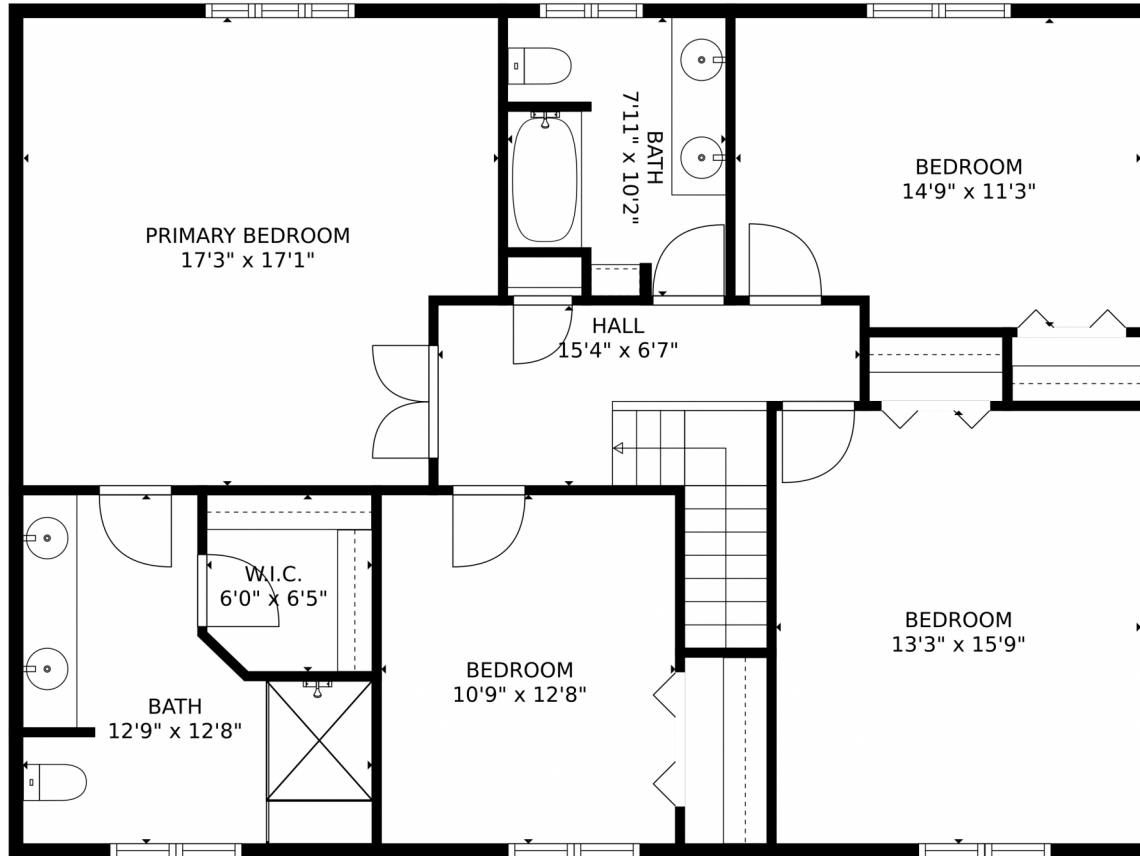


Disclaimer: Sizes and Dimensions are Approximate, Actual May Vary.



Abigail (Abby) Workman
970-405-5663
abby@searsrealestate.com

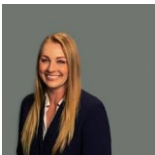




GROSS INTERNAL AREA
Below Ground: 259 sq. ft, FLOOR 2: 1459 sq. ft, FLOOR 3: 1225 sq. ft
EXCLUDED AREAS: STORAGE: 292 sq. ft, UNFINISHED BASEMENT: 520 sq. ft, GARAGE: 746 sq. ft,
PORCH: 254 sq. ft, PATIO: 271 sq. ft, FIREPLACE: 4 sq. ft
TOTAL: 2943 sq. ft
MEASUREMENTS CALCULATED BY V1Photos.COM ARE DEEMED HIGHLY RELIABLE BUT NOT GUARANTEED.



Disclaimer: Sizes and Dimensions are Approximate, Actual May Vary.

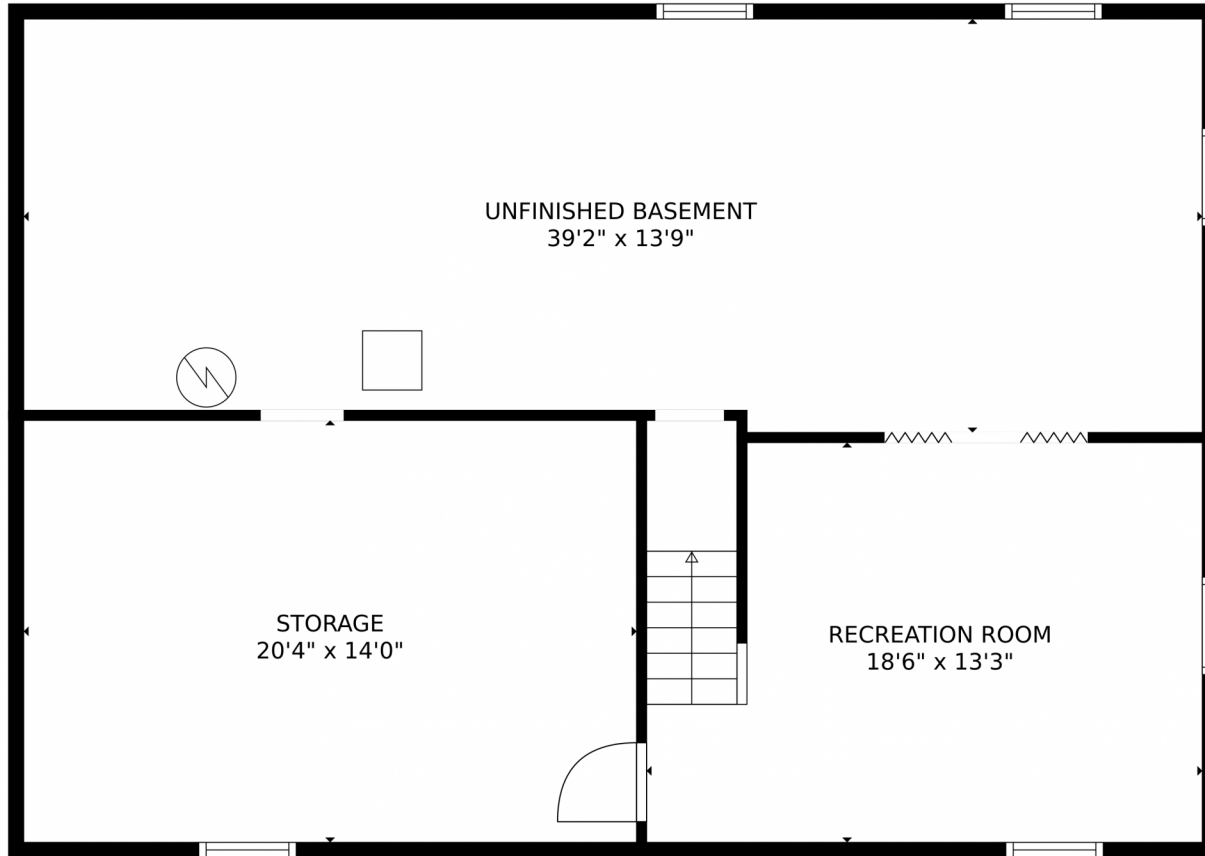


Abigail (Abby) Workman
970-405-5663
abby@searsrealestate.com



Scan code for more property details

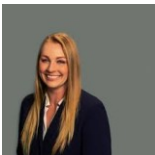




GROSS INTERNAL AREA
Below Ground: 259 sq. ft, FLOOR 2: 1459 sq. ft, FLOOR 3: 1225 sq. ft
EXCLUDED AREAS: STORAGE: 292 sq. ft, UNFINISHED BASEMENT: 520 sq. ft, GARAGE: 746 sq. ft,
PORCH: 254 sq. ft, PATIO: 271 sq. ft, FIREPLACE: 4 sq. ft
TOTAL: 2943 sq. ft
MEASUREMENTS CALCULATED BY V1Photos.COM ARE DEEMED HIGHLY RELIABLE BUT NOT GUARANTEED.



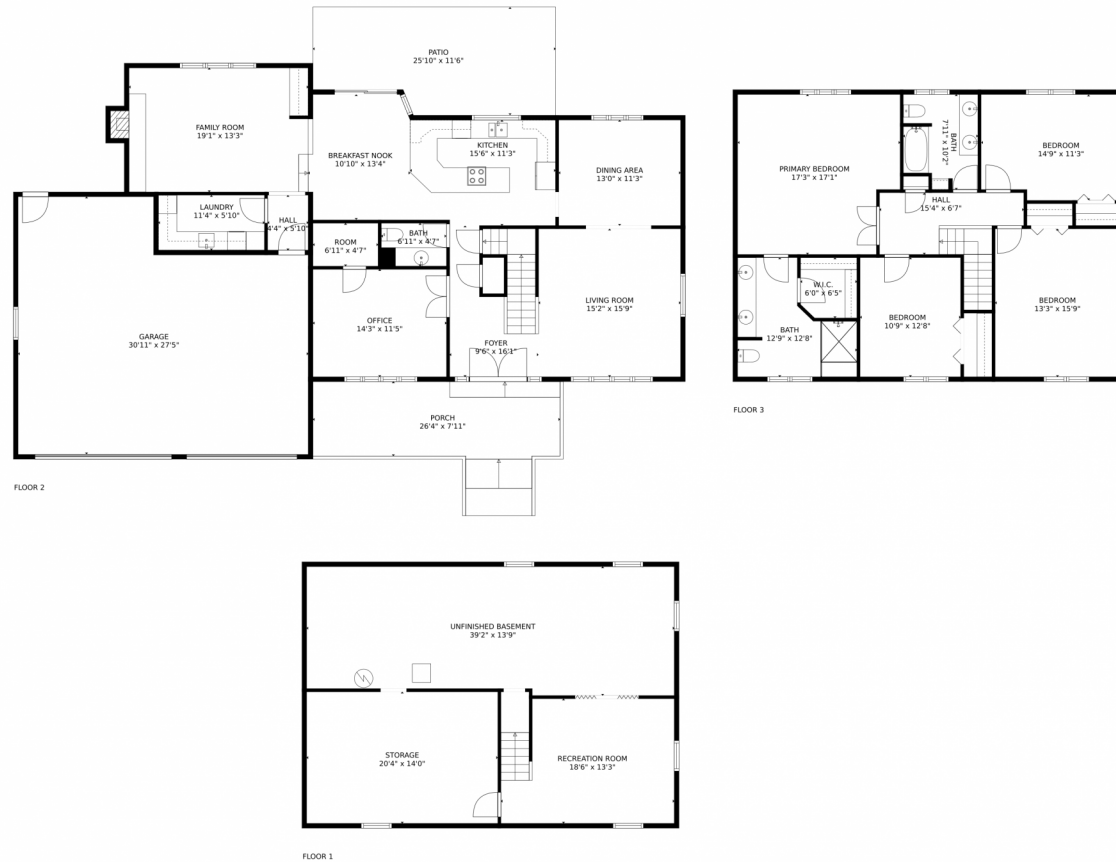
Disclaimer: Sizes and Dimensions are Approximate, Actual May Vary.



Abigail (Abby) Workman
970-405-5663
abby@searsrealestate.com



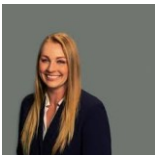
1234 49th Avenue, Greeley, CO 80634 – All Levels



GROSS INTERNAL AREA
Below Ground: 259 sq. ft, FLOOR 2: 1459 sq. ft, FLOOR 3: 1225 sq. ft
EXCLUDED AREAS: STORAGE: 292 sq. ft, UNFINISHED BASEMENT: 520 sq. ft, GARAGE: 746 sq. ft,
PORCH: 254 sq. ft, PATIO: 271 sq. ft, FIREPLACE: 4 sq. ft
TOTAL: 2943 sq. ft
MEASUREMENTS CALCULATED BY V1Photos.COM ARE DEEMED HIGHLY RELIABLE BUT NOT GUARANTEED.



Disclaimer: Sizes and Dimensions are Approximate, Actual May Vary.



Abigail (Abby) Workman
970-405-5663
abby@searsrealestate.com

