 Single Family

 2004 SQFT

 3 Beds

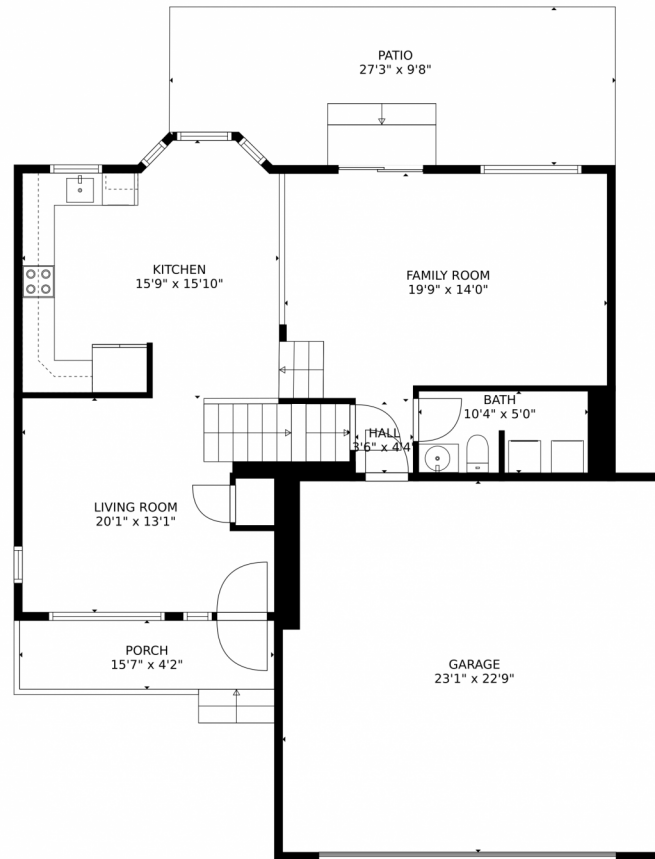
 3 Baths



**Taylor Haas**  
 303-665-7368  
 taylorh@coloradorpm.com  
<https://www.coloradorpm.com/available-rental-properties-denver>



# 5493 South Versailles Street, Aurora, CO 80015 – Main Level



GROSS INTERNAL AREA  
Below Ground: 334 sq. ft, FLOOR 2: 801 sq. ft, FLOOR 3: 672 sq. ft  
EXCLUDED AREAS: ELECTRICAL ROOM: 38 sq. ft, CRAWL SPACE: 240 sq. ft, GARAGE: 525 sq. ft.  
PORCH: 66 sq. ft, PATIO: 254 sq. ft  
TOTAL: 1807 sq. ft  
MEASUREMENTS CALCULATED BY V1Photos.com ARE DEEMED HIGHLY RELIABLE BUT NOT GUARANTEED.



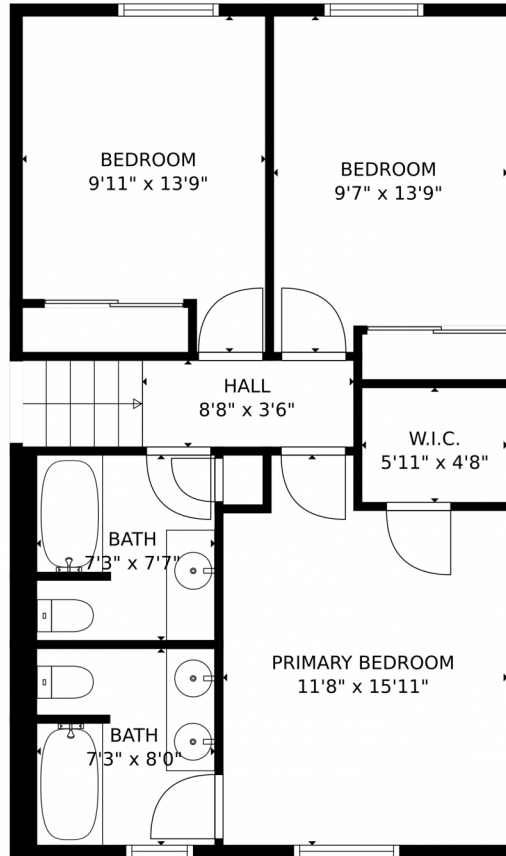
Disclaimer: Sizes and Dimensions are Approximate, Actual May Vary.



**Taylor Haas**  
303-665-7368  
taylorh@coloradorpm.com  
<https://www.coloradorpm.com/available-rental-properties-denver>



# 5493 South Versailles Street, Aurora, CO 80015 – Upper Level



GROSS INTERNAL AREA  
Below Ground: 334 sq. ft., FLOOR 2: 801 sq. ft., FLOOR 3: 672 sq. ft.  
EXCLUDED AREAS: ELECTRICAL ROOM: 38 sq. ft., CRAWL SPACE: 240 sq. ft., GARAGE: 525 sq. ft.  
PORCH: 66 sq. ft., PATIO: 254 sq. ft.  
TOTAL: 1807 sq. ft.  
MEASUREMENTS CALCULATED BY V1Photos.COM ARE DEEMED HIGHLY RELIABLE BUT NOT GUARANTEED.



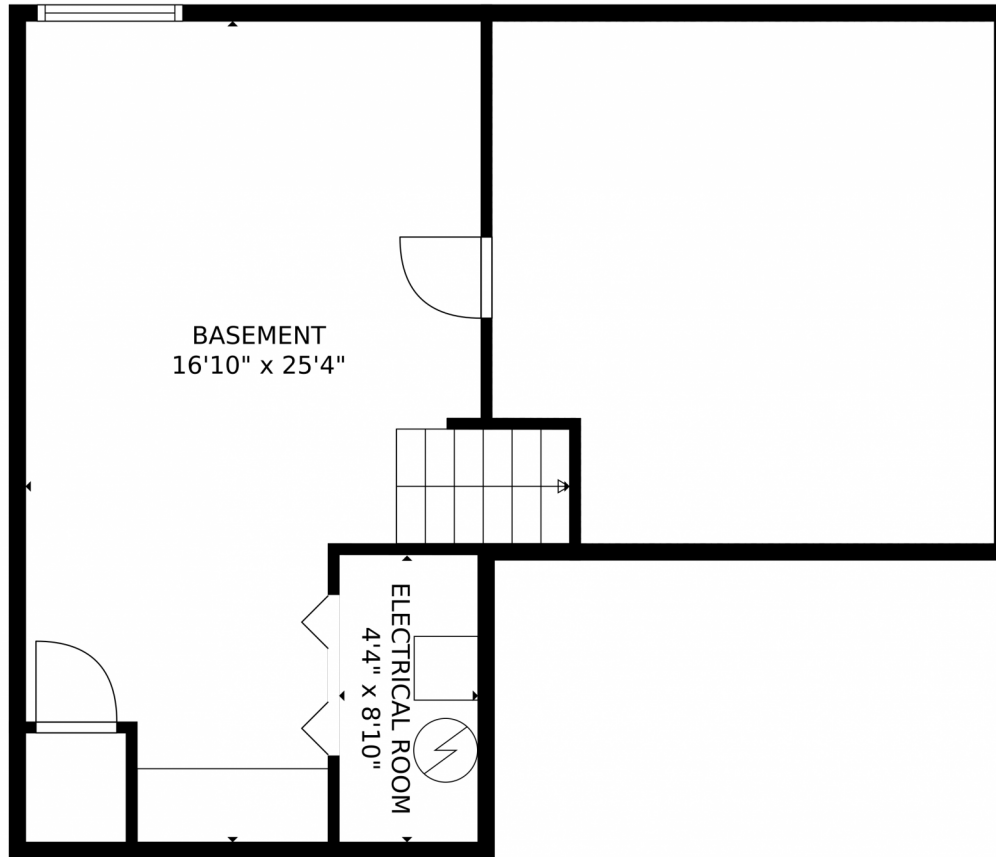
Disclaimer: Sizes and Dimensions are Approximate, Actual May Vary.



**Taylor Haas**  
303-665-7368  
taylorh@coloradorpm.com  
<https://www.coloradorpm.com/available-rental-properties-denver>



5493 South Versailles Street, Aurora, CO 80015 – Lower Level



GROSS INTERNAL AREA  
Below Ground: 334 sq. ft., FLOOR 2: 801 sq. ft., FLOOR 3: 672 sq. ft.  
EXCLUDED AREAS: ELECTRICAL ROOM: 38 sq. ft., CRAWL SPACE: 240 sq. ft., GARAGE: 525 sq. ft.  
PORCH: 66 sq. ft., PATIO: 254 sq. ft.  
TOTAL: 1807 sq. ft.  
MEASUREMENTS CALCULATED BY V1Photos.com ARE DEEMED HIGHLY RELIABLE BUT NOT GUARANTEED.



Disclaimer: Sizes and Dimensions are Approximate, Actual May Vary.



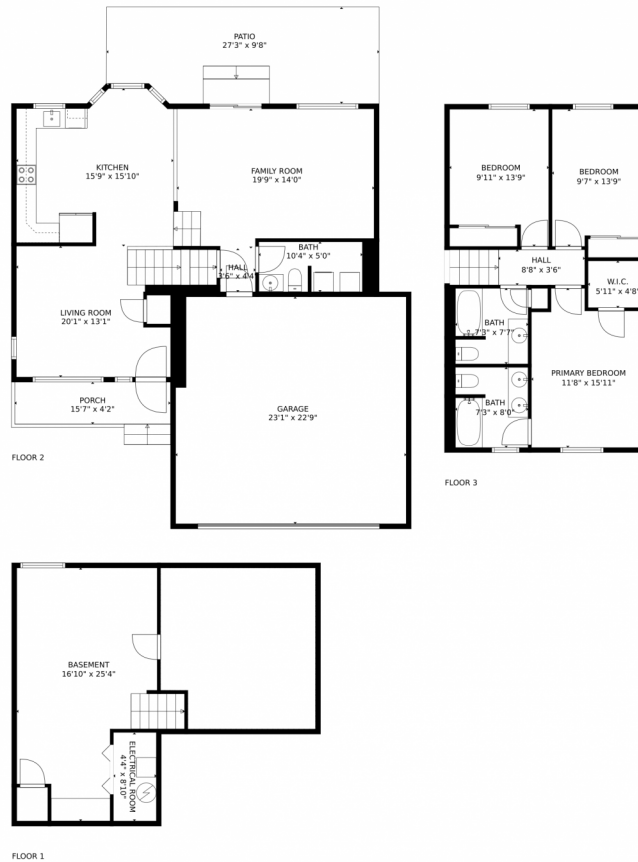
**Taylor Haas**  
303-665-7368  
taylorh@coloradorpm.com  
<https://www.coloradorpm.com/available-rental-properties-denver>



Scan code  
for more  
property  
details



# 5493 South Versailles Street, Aurora, CO 80015 – All Levels



GROSS INTERNAL AREA  
Below Ground: 334 sq. ft, FLOOR 2: 801 sq. ft, FLOOR 3: 672 sq. ft  
EXCLUDED AREAS: ELECTRICAL ROOM: 38 sq. ft, CRAWL SPACE: 240 sq. ft, GARAGE: 525 sq. ft,  
PORCH: 66 sq. ft, PATIO: 254 sq. ft  
TOTAL: 1807 sq. ft  
MEASUREMENTS CALCULATED BY V1Photos.com ARE DEEMED HIGHLY RELIABLE BUT NOT GUARANTEED.



Disclaimer: Sizes and Dimensions are Approximate, Actual May Vary.



**Taylor Haas**  
303-665-7368  
taylorh@coloradorpm.com  
<https://www.coloradorpm.com/available-rental-properties-denver>

