



Single Family



827 SQFT



2 Beds



1 Baths



1 Car



0.14 Acre



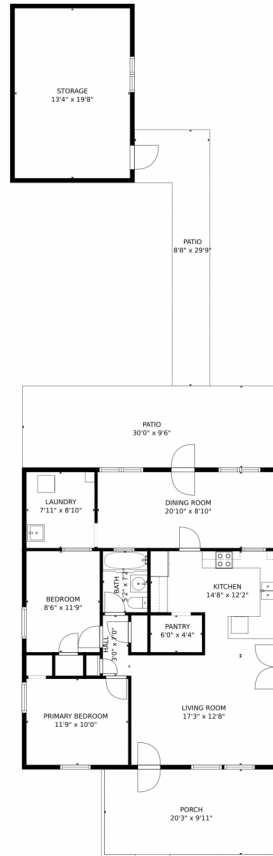
Brian Franzen
970-301-0266
brian@briansellsnoco.com



Scan code
for more
property
details



1338 Spruce Street, Denver, CO 80220 – Main Level



GROSS INTERNAL AREA
FLOOR 1: 989 sq. ft
EXCLUDED AREAS: STORAGE: 265 sq. ft, PORCH: 200 sq. ft, PATIO: 441 sq. ft
TOTAL: 989 sq. ft
MEASUREMENTS CALCULATED BY V1Photos.com ARE DEEMED HIGHLY RELIABLE BUT NOT GUARANTEED.



Disclaimer: Sizes and Dimensions are Approximate, Actual May Vary.



Brian Franzen
970-301-0266
brian@briansellsnoco.com

