




20099 East Doane Drive, Aurora, CO 80013 - All Floors



 Single Family

 1575 SQFT

 3 Beds

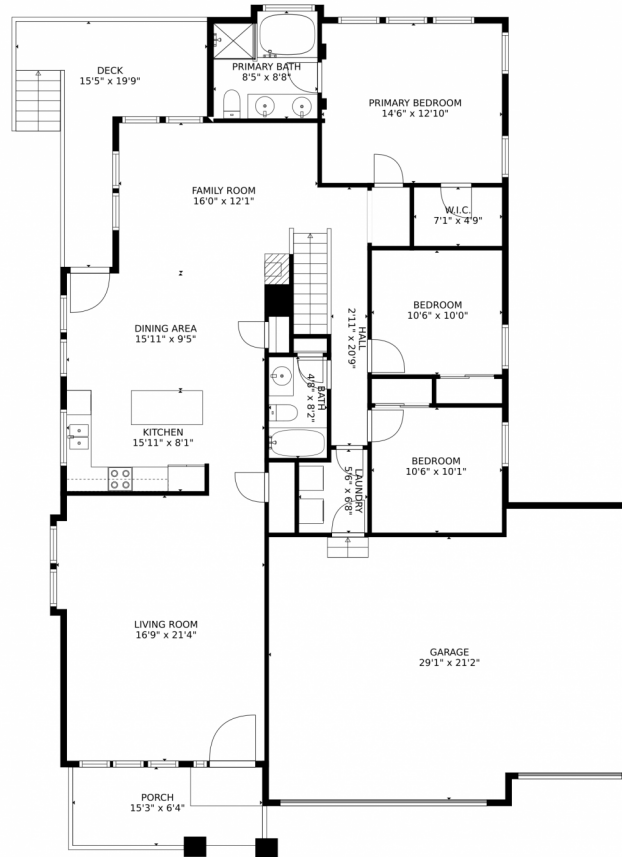
 2 Baths



Taylor Haas
303-665-7368
taylorh@coloradorpm.com
<https://www.coloradorpm.com/available-rental-properties-denver>



20099 East Doane Drive, Aurora, CO 80013 – Main Floor



GROSS INTERNAL AREA
Below Ground: 0 sq. ft. FLOOR 2: 1594 sq. ft.
EXCLUDED AREAS: UNFINISHED BASEMENT: 1442 sq. ft. PORCH: 96 sq. ft. DECK: 168 sq. ft.
GARAGE: 615 sq. ft.
TOTAL: 1594 sq. ft.
MEASUREMENTS CALCULATED BY V1Photos.com ARE DEEMED HIGHLY RELIABLE BUT NOT GUARANTEED.



Disclaimer: Sizes and Dimensions are Approximate, Actual May Vary.



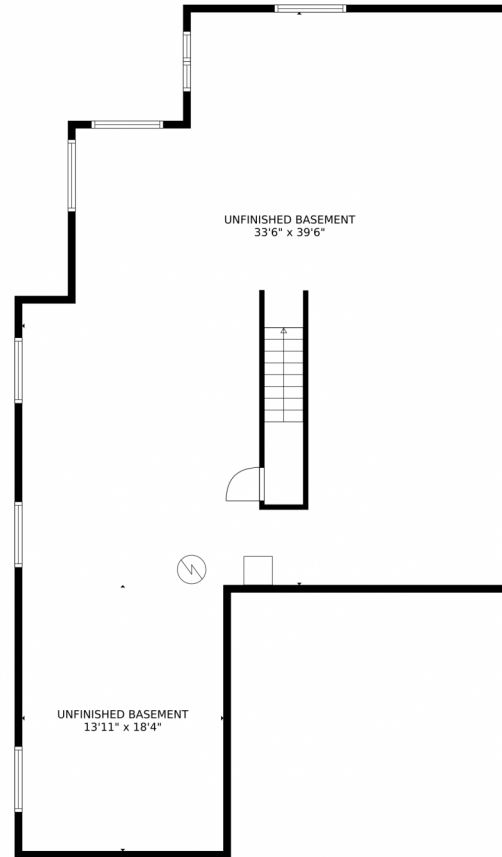
Taylor Haas
303-665-7368
taylorh@coloradorpm.com
<https://www.coloradorpm.com/available-rental-properties-denver>



Scan code
for more
property
details



20099 East Doane Drive, Aurora, CO 80013 – Basement



GROSS INTERNAL AREA
Below Ground: 0 sq. ft, FLOOR 2: 1594 sq. ft
EXCLUDED AREAS: UNFINISHED BASEMENT: 1442 sq. ft, PORCH: 96 sq. ft, DECK: 168 sq. ft,
GARAGE: 615 sq. ft
TOTAL: 1594 sq. ft
MEASUREMENTS CALCULATED BY V1Photos.COM ARE DEEMED HIGHLY RELIABLE BUT NOT GUARANTEED.



Disclaimer: Sizes and Dimensions are Approximate, Actual May Vary.



Taylor Haas

303-665-7368

taylorh@coloradorpm.com

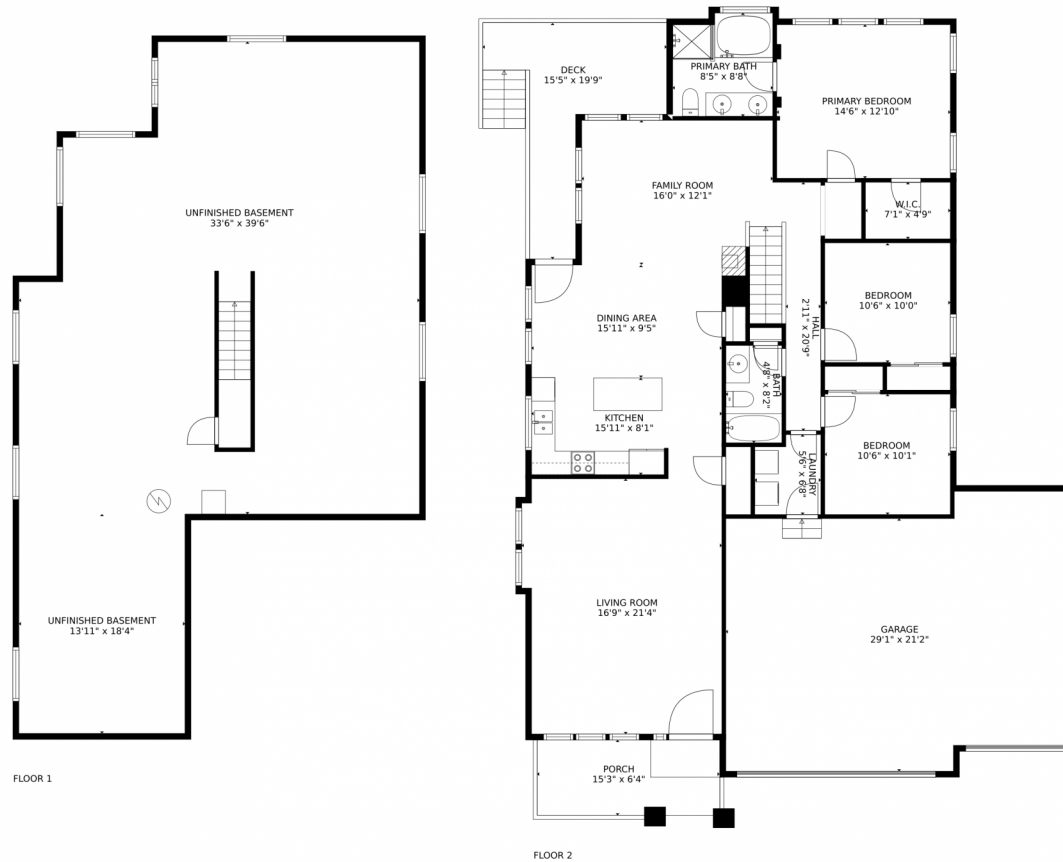
<https://www.coloradorpm.com/available-rental-properties-denver>



Scan code
for more
property
details



2009 East Doane Drive, Aurora, CO 80013 – All Floors



GROSS INTERNAL AREA
Below Ground: 0 sq. ft, FLOOR 2: 1594 sq. ft
EXCLUDED AREAS: UNFINISHED BASEMENT: 1442 sq. ft, PORCH: 96 sq. ft, DECK: 168 sq. ft,
GARAGE: 615 sq. ft
TOTAL: 1594 sq. ft
MEASUREMENTS CALCULATED BY V1Photos.com ARE DEEMED HIGHLY RELIABLE BUT NOT GUARANTEED.



Disclaimer: Sizes and Dimensions are Approximate, Actual May Vary.



Taylor Haas
303-665-7368
taylorh@coloradorpm.com
<https://www.coloradorpm.com/available-rental-properties-denver>



Scan code
for more
property
details

