



6488 S Southwood Drive  
 Centennial, CO 80121  
 COMMUNITY: Ludjor Sub

MLS # 3704713

PRICE  
 \$1,350,000



Single Family



3280 SQFT



4 Beds



3/2 Baths



3 Car



0.3 Acre

## PROPERTY DETAILS

Luxury living in Southwood area. Open-concept design, top-tier amenities, and a breathtaking location. A Frame windows for amazing lighting. Walkout basement and full kitchen. Stunning chefs dream kitchen with high-end appliances. Two luxurious primary suites with private baths. Basement with full kitchen and baths. 3-car garage with extra storage. Private oasis with park-like landscape. Covered patio and built-in grill. Must see in person. Open house this weekend. Seller is a licensed Colorado real estate agent.



**Orlando Gallardo**  
 720-436-2204  
 elevatohomegroup@gmail.com

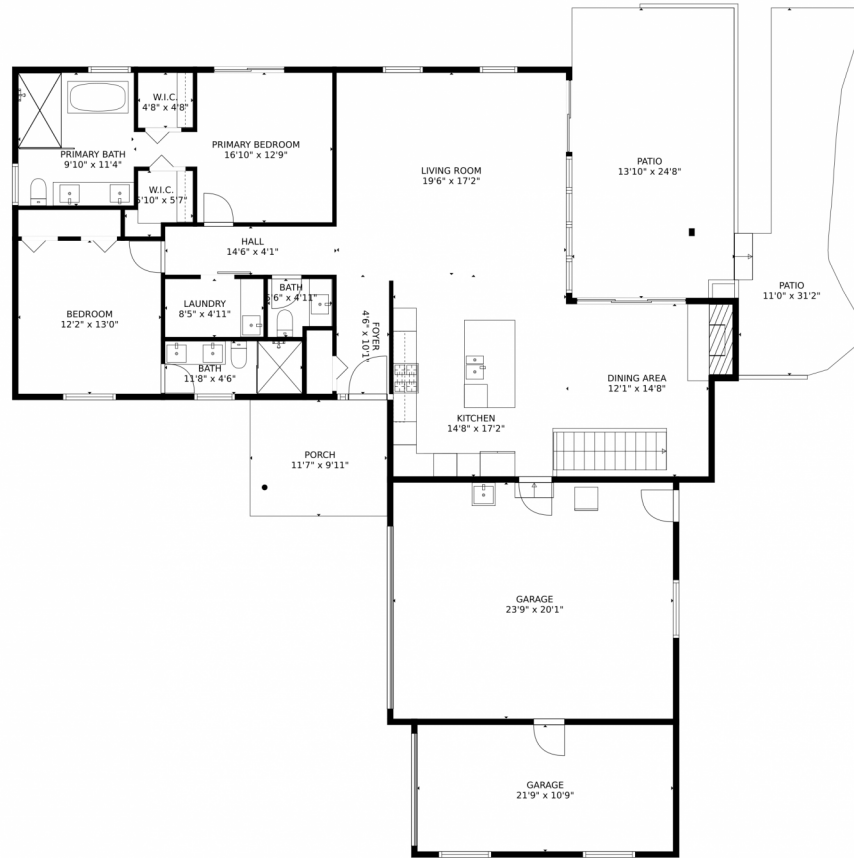
**Sarah Manalisay**  
 303-656-9285  
 sarah.manalisay@exprealty.com



Scan code  
 for more  
 property  
 details



# 6488 S Southwood Drive, Centennial, CO 80121 – Main Level



GROSS INTERNAL AREA  
Below Ground: 1380 sq. ft, FLOOR 2: 1552 sq. ft  
EXCLUDED AREAS: PATIO: 669 sq. ft, ELECTRICAL ROOM: 60 sq. ft, GARAGE: 712 sq. ft,  
PORCH: 115 sq. ft, FIREPLACE: 12 sq. ft  
TOTAL: 2932 sq. ft  
MEASUREMENTS CALCULATED BY V1Photos.COM ARE DEEMED HIGHLY RELIABLE BUT NOT GUARANTEED.



Disclaimer: Sizes and Dimensions are Approximate, Actual May Vary.

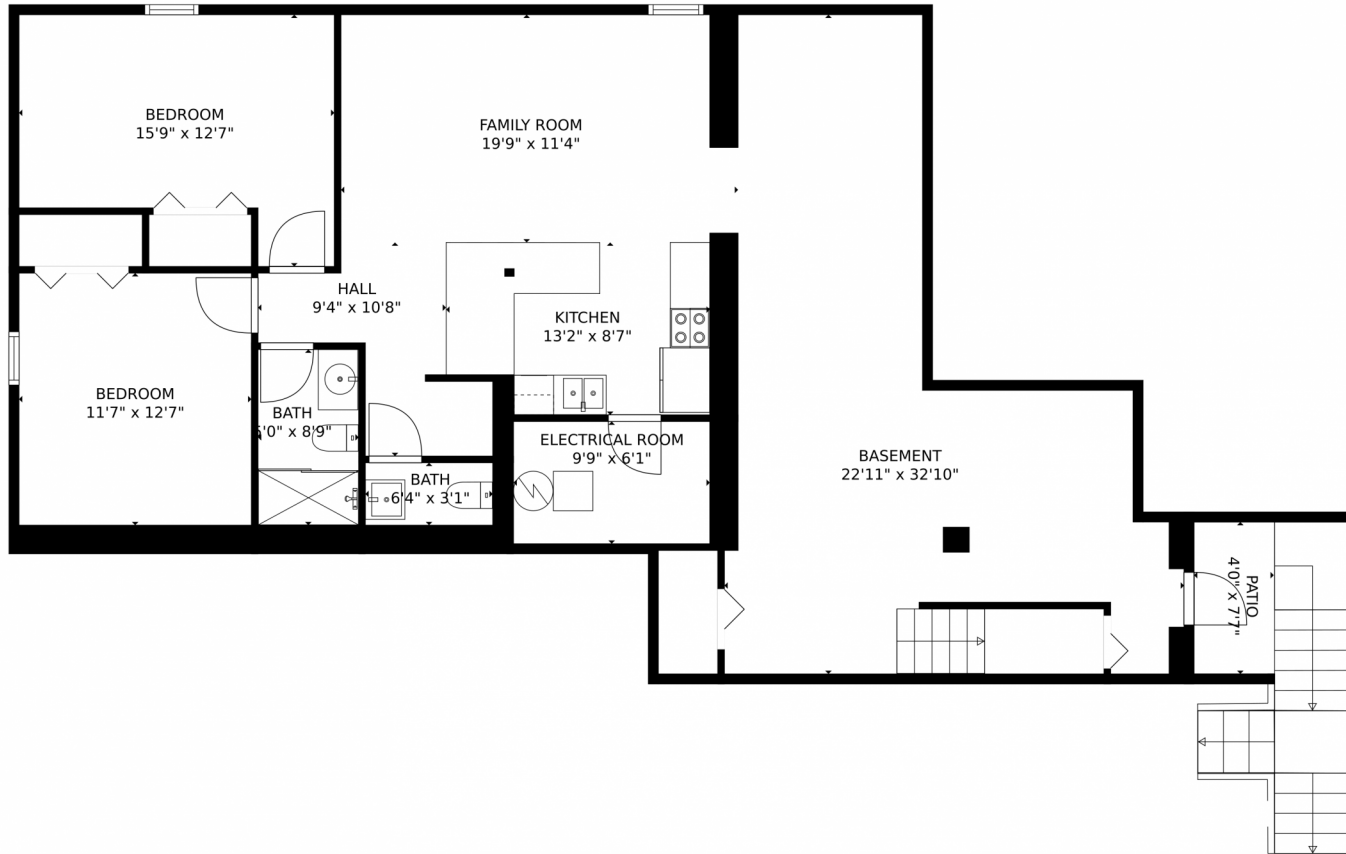


**Orlando Gallardo**  
720-436-2204  
elevatehomegroup@gmail.com

**Sarah Manalisay**  
303-656-9285  
sarah.manalisay@exprealty.com



# 6488 S Southwood Drive, Centennial, CO 80121 – Lower Level



GROSS INTERNAL AREA  
Below Ground: 1380 sq. ft. FLOOR 2: 1552 sq. ft.  
EXCLUDED AREAS: PATIO: 669 sq. ft. ELECTRICAL ROOM: 60 sq. ft. GARAGE: 712 sq. ft.  
PORCH: 115 sq. ft. FIREPLACE: 12 sq. ft.  
TOTAL: 2932 sq. ft.  
MEASUREMENTS CALCULATED BY V1Photos.com ARE DEEMED HIGHLY RELIABLE BUT NOT GUARANTEED.



Disclaimer: Sizes and Dimensions are Approximate, Actual May Vary.



**Orlando Gallardo**  
720-436-2204  
elevatehomegroup@gmail.com

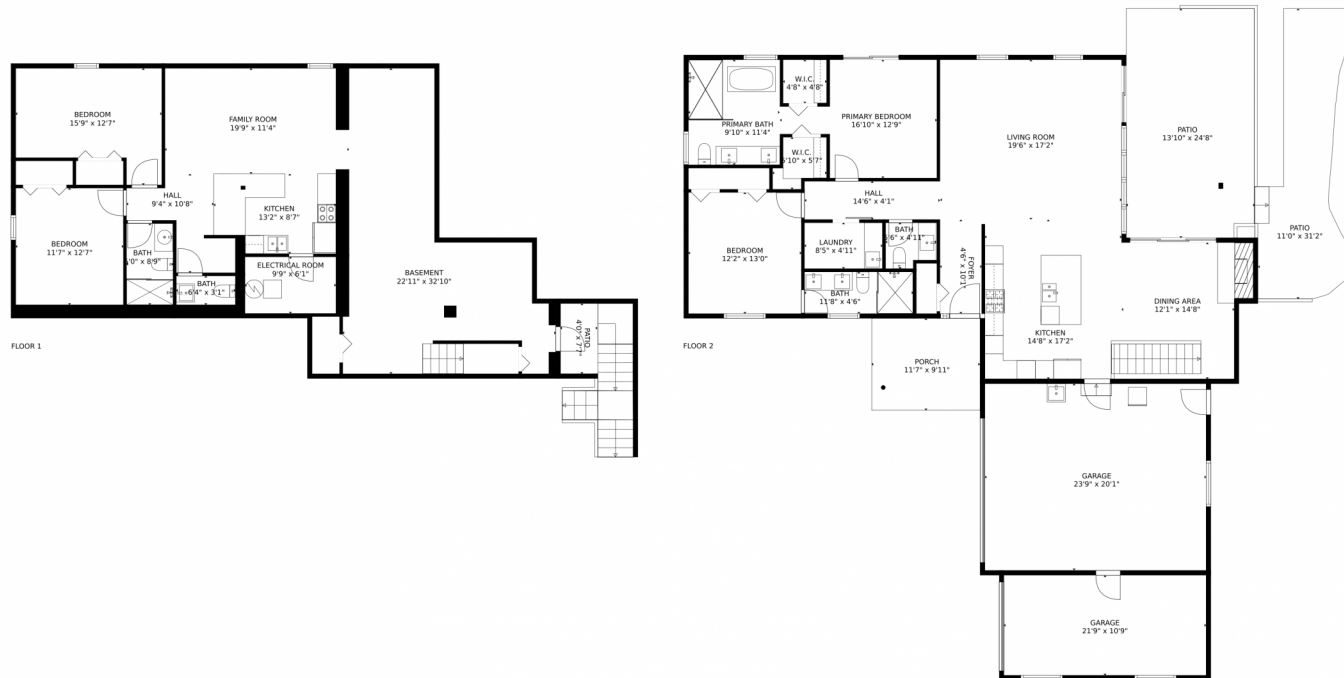
**Sarah Manalisay**  
303-656-9285  
sarah.manalisay@exprealty.com



Scan code  
for more  
property  
details



# 6488 S Southwood Drive, Centennial, CO 80121 – All Levels



GROSS INTERNAL AREA  
Below Ground: 1380 sq. ft, FLOOR 2: 1552 sq. ft  
EXCLUDED AREAS: PATIO: 669 sq. ft, ELECTRICAL ROOM: 60 sq. ft, GARAGE: 712 sq. ft,  
PORCH: 115 sq. ft, FIREPLACE: 12 sq. ft  
TOTAL: 2932 sq. ft  
MEASUREMENTS CALCULATED BY V1Photos.COM ARE DEEMED HIGHLY RELIABLE BUT NOT GUARANTEED.



Disclaimer: Sizes and Dimensions are Approximate, Actual May Vary.



**Orlando Gallardo**  
720-436-2204  
elevatehomegroup@gmail.com

**Sarah Manalisay**  
303-656-9285  
sarah.manalisay@exprealty.com



Scan code  
for more  
property  
details

