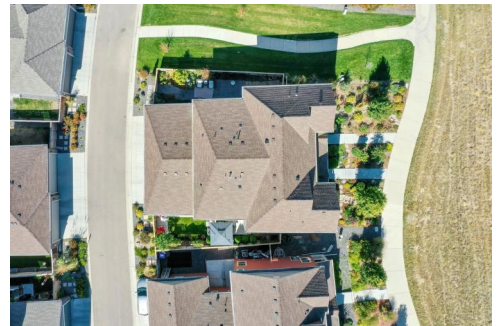




344 Tigercat Way  
Fort Collins, CO 80524  
**COMMUNITY:** East Ridge 2nd Filing

**MLS #** IR999072  
**PRICE** \$545,000



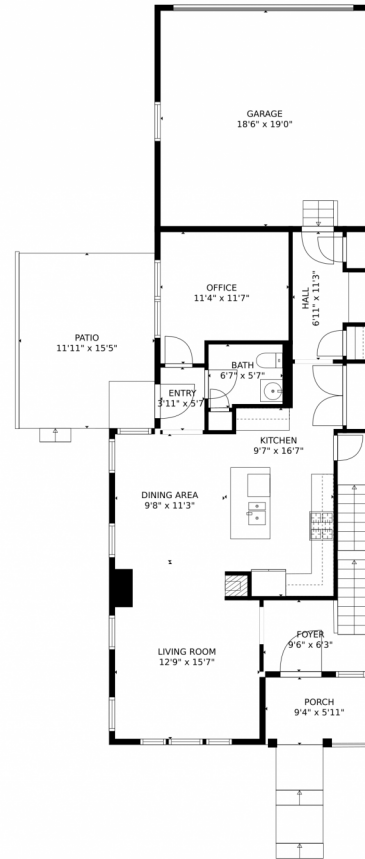
Multi Family   2494 SQFT   3 Beds   2/1 Baths   2 Car   0.07 Acre



**Katie Robinson**  
970-430-9630  
katierobinson@windermere.com



# 344 Tigercat Way, Fort Collins, CO 80524 – Main Level



GROSS INTERNAL AREA  
Below Ground: 0 sq. ft, FLOOR 2: 879 sq. ft, FLOOR 3: 832 sq. ft  
EXCLUDED AREAS: UNFINISHED BASEMENT: 517 sq. ft, GARAGE: 352 sq. ft, PATIO: 185 sq. ft,  
PORCH: 55 sq. ft, OPEN TO BELOW: 46 sq. ft  
TOTAL: 1711 sq. ft  
MEASUREMENTS CALCULATED BY V1Photos.COM ARE DEEMED HIGHLY RELIABLE BUT NOT GUARANTEED.



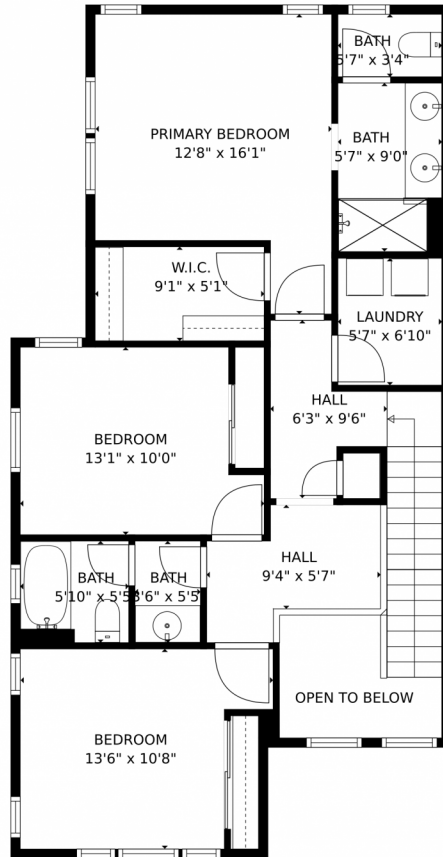
Disclaimer: Sizes and Dimensions are Approximate, Actual May Vary.



**Katie Robinson**  
970-430-9630  
katierobinson@windermere.com



# 344 Tigercat Way, Fort Collins, CO 80524 – Upper Level



GROSS INTERNAL AREA  
Below Ground: 0 sq. ft, FLOOR 2: 879 sq. ft, FLOOR 3: 832 sq. ft  
EXCLUDED AREAS: UNFINISHED BASEMENT: 517 sq. ft, GARAGE: 352 sq. ft, PATIO: 185 sq. ft,  
PORCH: 55 sq. ft, OPEN TO BELOW: 46 sq. ft  
TOTAL: 1711 sq. ft  
MEASUREMENTS CALCULATED BY V1Photos.com ARE DEEMED HIGHLY RELIABLE BUT NOT GUARANTEED.

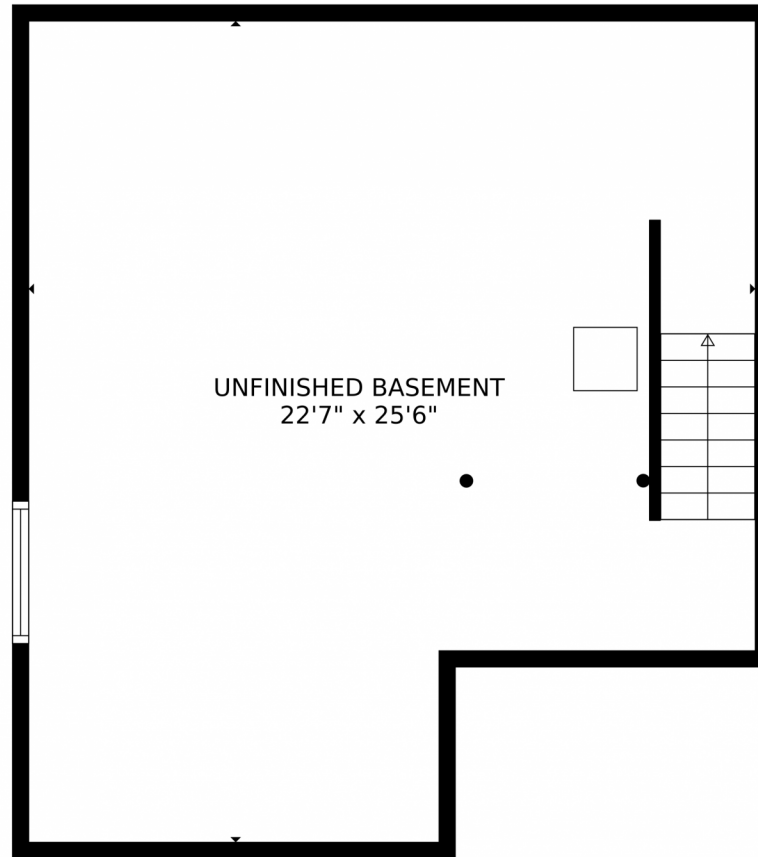


Disclaimer: Sizes and Dimensions are Approximate, Actual May Vary.



**Katie Robinson**  
970-430-9630  
katierobinson@windermere.com





GROSS INTERNAL AREA  
Below Ground: 0 sq. ft, FLOOR 2: 879 sq. ft, FLOOR 3: 832 sq. ft  
EXCLUDED AREAS: UNFINISHED BASEMENT: 517 sq. ft, GARAGE: 352 sq. ft, PATIO: 185 sq. ft,  
PORCH: 55 sq. ft, OPEN TO BELOW: 46 sq. ft  
TOTAL: 1711 sq. ft  
MEASUREMENTS CALCULATED BY V1Photos.com ARE DEEMED HIGHLY RELIABLE BUT NOT GUARANTEED.



Disclaimer: Sizes and Dimensions are Approximate, Actual May Vary.



**Katie Robinson**  
970-430-9630  
katierobinson@windermere.com



# 344 Tigercat Way, Fort Collins, CO 80524 – All Levels



FLOOR 1

FLOOR 2

FLOOR 3

GROSS INTERNAL AREA  
Below Ground: 0 sq. ft, FLOOR 2: 879 sq. ft, FLOOR 3: 832 sq. ft  
EXCLUDED AREAS: UNFINISHED BASEMENT: 517 sq. ft, GARAGE: 352 sq. ft, PATIO: 185 sq. ft,  
PORCH: 55 sq. ft, OPEN TO BELOW: 46 sq. ft  
TOTAL: 1711 sq. ft  
MEASUREMENTS CALCULATED BY V1Photos.COM ARE DEEMED HIGHLY RELIABLE BUT NOT GUARANTEED.



Disclaimer: Sizes and Dimensions are Approximate, Actual May Vary.



**Katie Robinson**  
970-430-9630  
katierobinson@windermere.com

