



Condominium



1228 SQFT



2 Beds



2/1 Baths



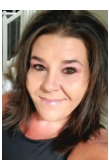
1 Car



0.1 Acre

## PROPERTY DETAILS

Beautifully remodeled 2-story townhome in a great location! Gorgeous kitchen with granite counters and stainless steel appliances, laminate wood flooring throughout main level, spacious living room with gas fireplace, dining room and large covered patio. Upstairs features a master suite with walk-in closet and ensuite bath, additional bedroom, full bath and laundry. Upgraded finishes throughout. Detached garage and reserved parking space. Community amenities include clubhouse, pool, hot tub. Easy access to shopping, restaurants, and highways. Quick possession available. Don't miss out on this amazing opportunity!



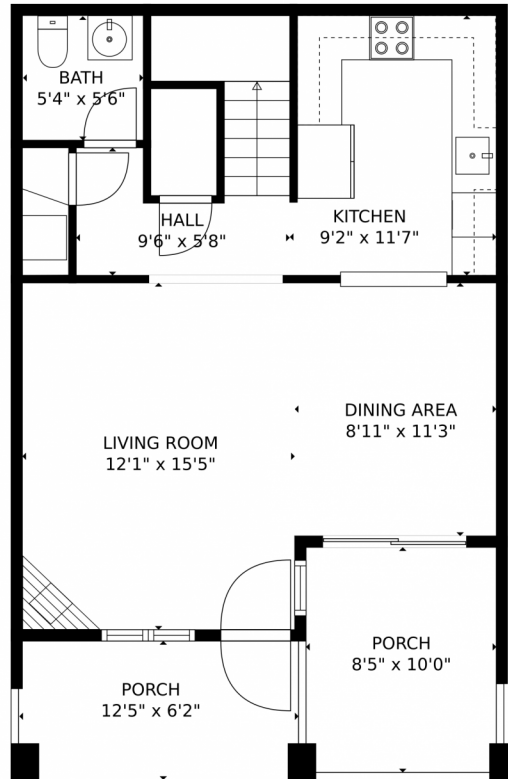
**RaNae Rodriguez**  
303-875-4091  
ranae@mscadvisors.com  
<http://www.mscadvisors.com>



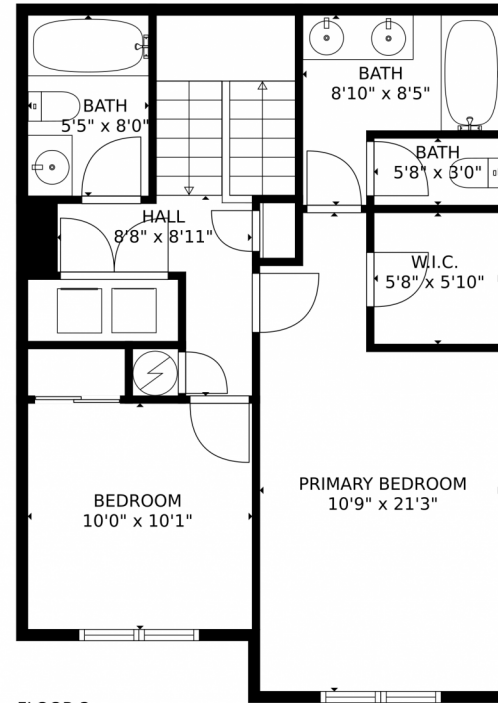
Scan code  
for more  
property  
details



# 2900 Purcell Street E-2, Brighton, CO 80601 – All Levels



FLOOR 1

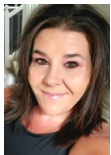


FLOOR 2

GROSS INTERNAL AREA  
FLOOR 1: 538 sq. ft, FLOOR 2: 605 sq. ft  
EXCLUDED AREAS: PORCH: 161 sq. ft  
TOTAL: 1143 sq. ft  
MEASUREMENTS CALCULATED BY V1Photos.COM ARE DEEMED HIGHLY RELIABLE BUT NOT GUARANTEED.



Disclaimer: Sizes and Dimensions are Approximate, Actual May Vary.



**RaNae Rodriguez**  
303-875-4091  
ranae@mscadvisors.com  
<http://www.mscadvisors.com>



Scan code  
for more  
property  
details