



2625 Kittridge Avenue
Colorado Springs, CO 80919
COMMUNITY: Peregrine



Single Family



4465 SQFT



5 Beds



2/1 Baths



3 Car



0.73 Acre



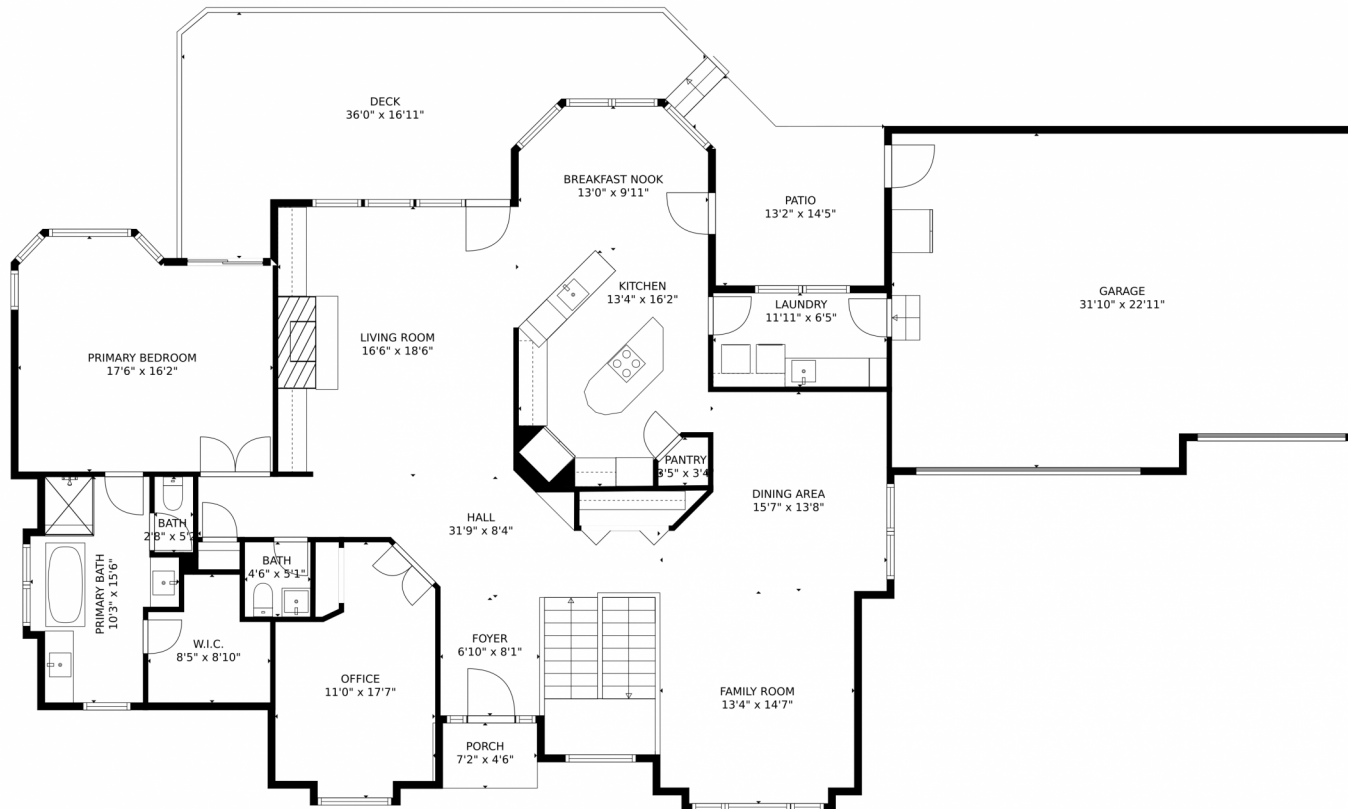
Eddie Hurt
719-339-3765
ehurt@erashields.com
<https://www.ColoradoSpringsRealEstate.com>



Scan code
for more
property
details



2625 Kittridge Avenue, Colorado Springs, CO 80919 – Main Level



TOTAL: 3771 sq. ft
Below Ground: 1639 sq. ft, FLOOR 2: 2132 sq. ft
EXCLUDED AREAS: STORAGE: 451 sq. ft, COVERED PATIO: 159 sq. ft, GARAGE: 703 sq. ft,
PORCH: 30 sq. ft, PATIO: 140 sq. ft, DECK: 398 sq. ft

MEASUREMENTS CALCULATED BY V1Photos.com ARE DEEMED HIGHLY RELIABLE BUT NOT GUARANTEED.



Disclaimer: Sizes and Dimensions are Approximate, Actual May Vary.



Eddie Hurt

719-339-3765

ehurt@erashields.com

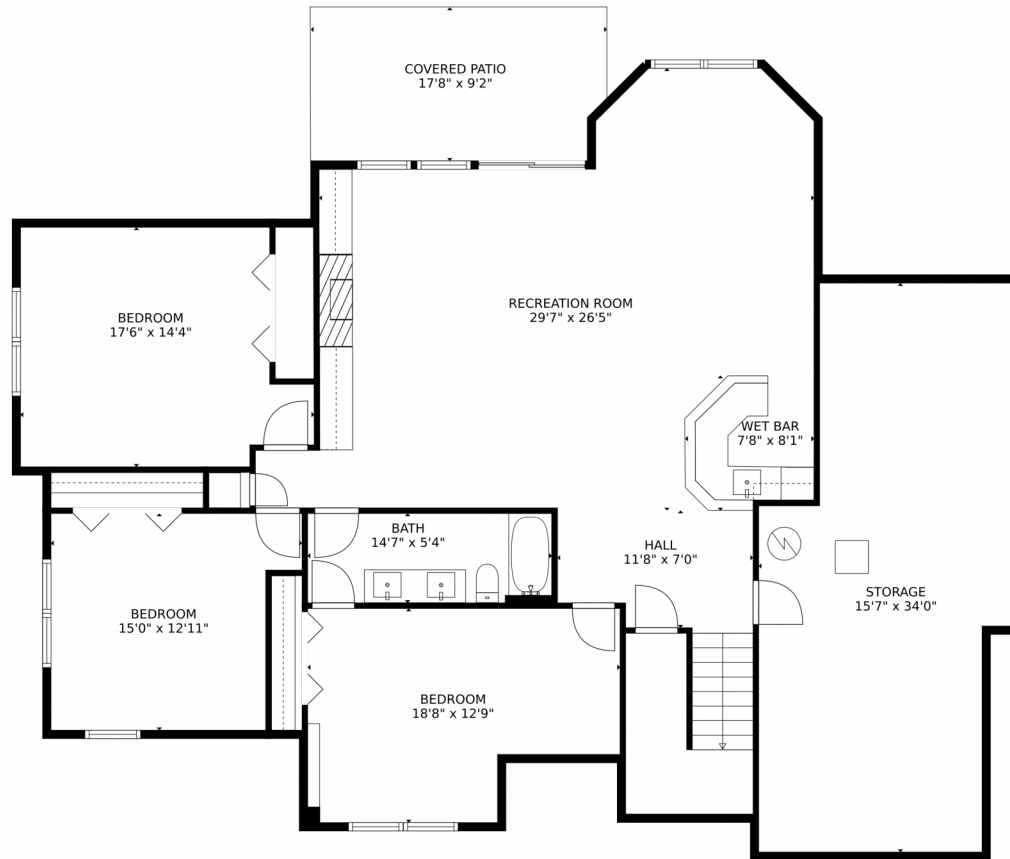
<https://www.ColoradoSpringsRealEstate.com>



Scan code
for more
property
details



2625 Kittridge Avenue, Colorado Springs, CO 80919 – Lower Level



TOTAL: 3594 sq. ft
Below Ground: 1639 sq. ft, FLOOR 2: 1955 sq. ft
EXCLUDED AREAS: STORAGE: 451 sq. ft, COVERED PATIO: 159 sq. ft, GARAGE: 703 sq. ft,
PORCH: 32 sq. ft, PATIO: 140 sq. ft, DECK: 398 sq. ft

MEASUREMENTS CALCULATED BY V1Photos.com ARE DEEMED HIGHLY RELIABLE BUT NOT GUARANTEED.



Disclaimer: Sizes and Dimensions are Approximate, Actual May Vary.



Eddie Hurt

719-339-3765

ehurt@erashields.com

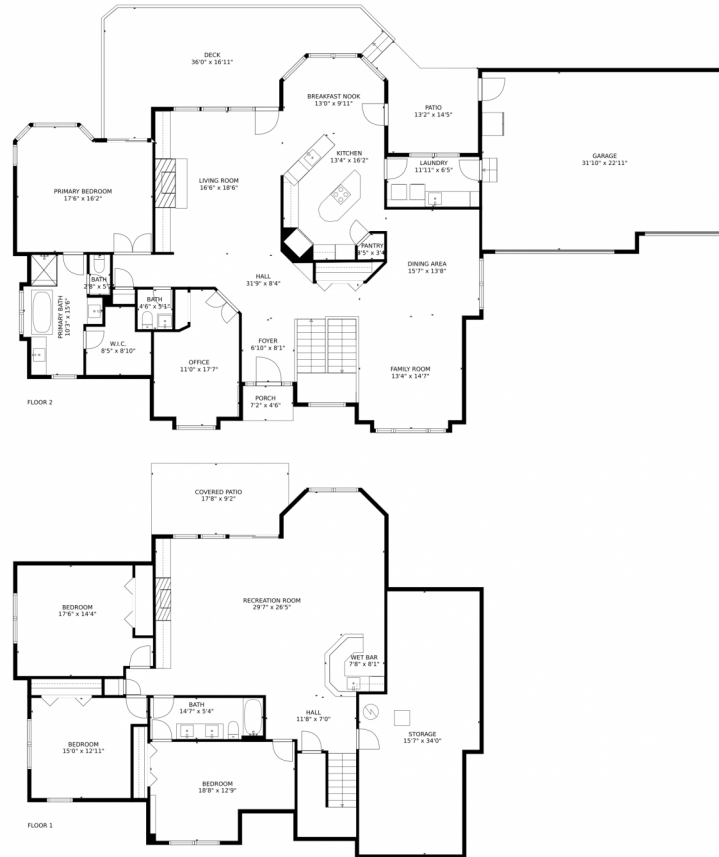
<https://www.ColoradoSpringsRealEstate.com>



Scan code
for more
property
details



2625 Kittridge Avenue, Colorado Springs, CO 80919 – All Levels



TOTAL: 3771 sq. ft
Below Ground: 1639 sq. ft, FLOOR 2: 2132 sq. ft
EXCLUDED AREAS: STORAGE: 451 sq. ft, COVERED PATIO: 159 sq. ft, GARAGE: 703 sq. ft,
PORCH: 30 sq. ft, PATIO: 140 sq. ft, DECK: 398 sq. ft

MEASUREMENTS CALCULATED BY V1Photos.com ARE DEEMED HIGHLY RELIABLE BUT NOT GUARANTEED.



Disclaimer: Sizes and Dimensions are Approximate, Actual May Vary.



Eddie Hurt

719-339-3765

ehurt@erashields.com

<https://www.ColoradoSpringsRealEstate.com>



Scan code
for more
property
details

