



204 Liberty Court  
Elizabeth, CO 80107  
COMMUNITY: Elizabeth Hillside Village

MLS # 4355395  
PRICE \$435,000



Single Family 2402 SQFT 3 Beds 2 Baths 2 Car 0.16 Acre

## PROPERTY DETAILS

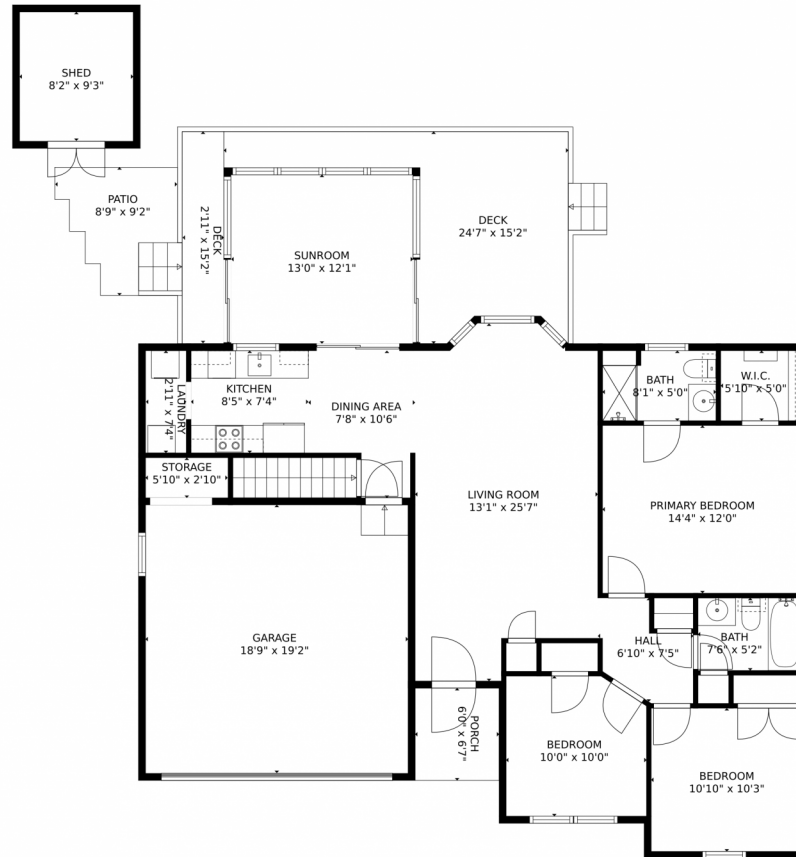
Welcome to this charming ranch home in Elizabeth, Colorado. With 3 bedrooms, 2 bathrooms, and modern updates, this property offers comfort and style. The open floor plan connects the living, dining, and kitchen areas, perfect for daily living and entertaining. The updated kitchen features all-new appliances. A spacious sunroom off the kitchen leads to a deck, providing a relaxing outdoor oasis. With a solar panel system, new hot water heater, and other modern upgrades, this home is perfect for enjoying the Colorado lifestyle.



**Kimberley Nicholas**  
720-216-7199  
highlandpropertiesco@gmail.com



# 204 Liberty Court, Elizabeth, CO 80107 – Main Level



GROSS INTERNAL AREA  
Below Ground: 0 sq. ft, FLOOR 2: 1248 sq. ft  
EXCLUDED AREAS: UNFINISHED BASEMENT: 1067 sq. ft, GARAGE: 360 sq. ft, STORAGE: 17 sq. ft,  
SHED: 75 sq. ft, PATIO: 67 sq. ft, DECK: 229 sq. ft,  
PORCH: 40 sq. ft  
TOTAL: 1248 sq. ft  
MEASUREMENTS CALCULATED BY V1Photos.com ARE DEEMED HIGHLY RELIABLE BUT NOT GUARANTEED.



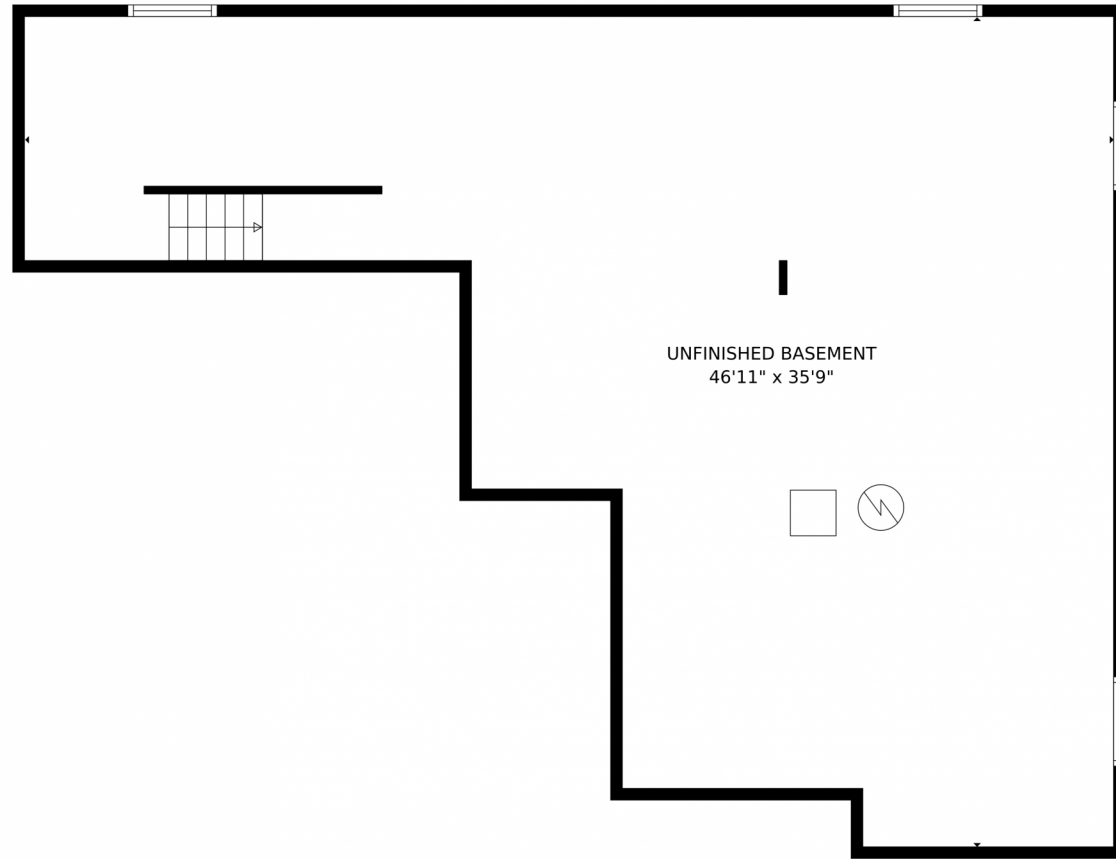
Disclaimer: Sizes and Dimensions are Approximate, Actual May Vary.



**Kimberley Nicholas**  
720-216-7199  
highlandpropertiesco@gmail.com



204 Liberty Court, Elizabeth, CO 80107 – Lower Level



GROSS INTERNAL AREA  
Below Ground: 0 sq. ft, FLOOR 2: 1248 sq. ft  
EXCLUDED AREAS: UNFINISHED BASEMENT: 1067 sq. ft, GARAGE: 360 sq. ft, STORAGE: 17 sq. ft,  
SHED: 75 sq. ft, PATIO: 67 sq. ft, DECK: 229 sq. ft,  
PORCH: 40 sq. ft  
TOTAL: 1248 sq. ft  
MEASUREMENTS CALCULATED BY V1Photos.com ARE DEEMED HIGHLY RELIABLE BUT NOT GUARANTEED.



Disclaimer: Sizes and Dimensions are Approximate, Actual May Vary.

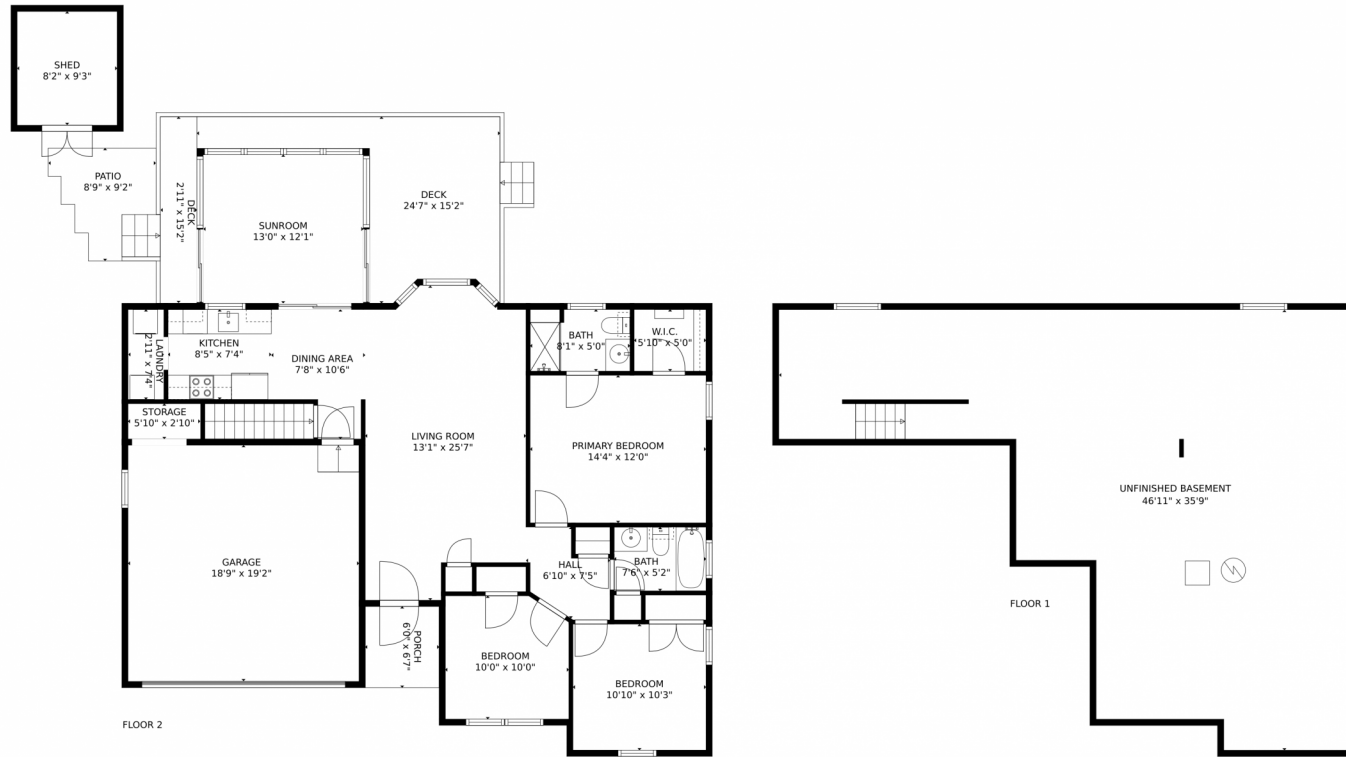


**Kimberley Nicholas**  
720-216-7199  
highlandpropertiesco@gmail.com



Scan code  
for more  
property  
details

# 204 Liberty Court, Elizabeth, CO 80107 – All Levels



GROSS INTERNAL AREA  
Below Ground: 0 sq. ft, FLOOR 2: 1248 sq. ft  
EXCLUDED AREAS: UNFINISHED BASEMENT: 1067 sq. ft, GARAGE: 360 sq. ft, STORAGE: 17 sq. ft,  
SHED: 75 sq. ft, PATIO: 67 sq. ft, DECK: 229 sq. ft,  
PORCH: 40 sq. ft  
TOTAL: 1248 sq. ft  
MEASUREMENTS CALCULATED BY V1Photos.com ARE DEEMED HIGHLY RELIABLE BUT NOT GUARANTEED.



Disclaimer: Sizes and Dimensions are Approximate, Actual May Vary.



**Kimberley Nicholas**  
720-216-7199  
highlandpropertiesco@gmail.com

