




 Single Family

 3469 SQFT

 5 Beds

 3/1 Baths

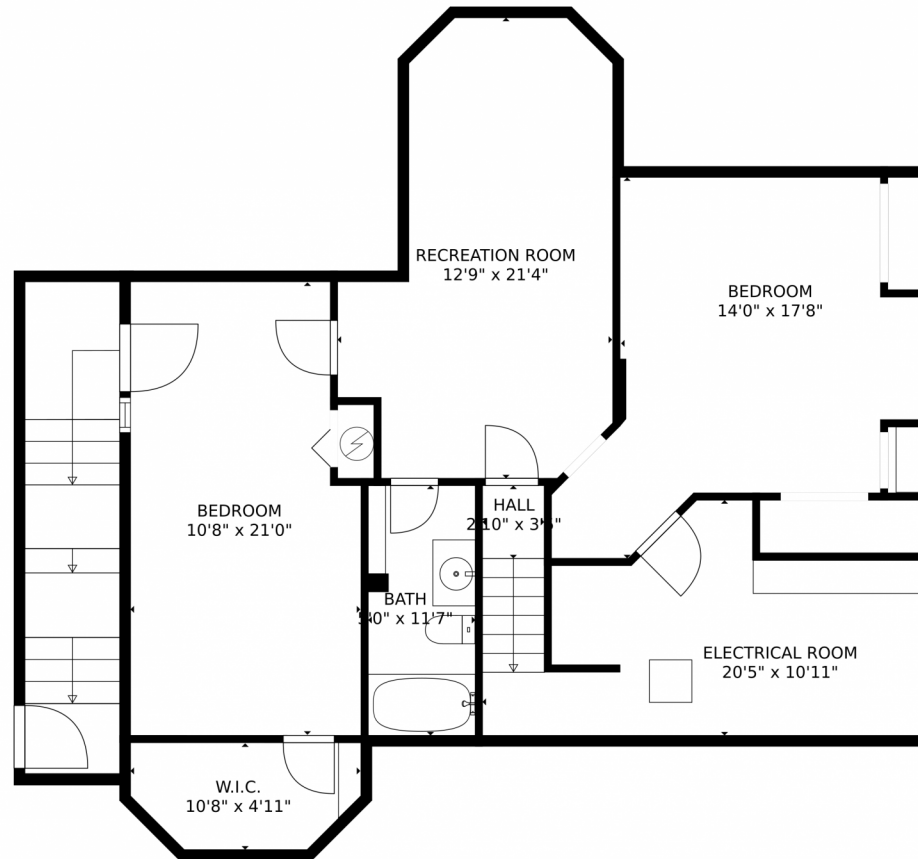
 2 Car



Jordan Kermes
952-956-2958
jkermes@wedgewoodhomesrealty.com
<https://colorado.wedgewoodhomesrealty.com>



59 Ironweed Drive, Pueblo, CO 81001 – Lower Level



GROSS INTERNAL AREA
Below Ground: 922 sq. ft, FLOOR 2: 1073 sq. ft, FLOOR 3: 1008 sq. ft
EXCLUDED AREAS: ELECTRICAL ROOM: 176 sq. ft, UNDEFINED: 6 sq. ft, DECK: 552 sq. ft,
PATIO: 217 sq. ft, PORCH: 99 sq. ft, GARAGE: 414 sq. ft,
BALCONY: 130 sq. ft, OPEN TO BELOW: 357 sq. ft
TOTAL: 3003 sq. ft
MEASUREMENTS CALCULATED BY V1Photos.com ARE DEEMED HIGHLY RELIABLE BUT NOT GUARANTEED.



Disclaimer: Sizes and Dimensions are Approximate, Actual May Vary.



Jordan Kermes

952-956-2958

jkermes@wedgewoodhomesrealty.com

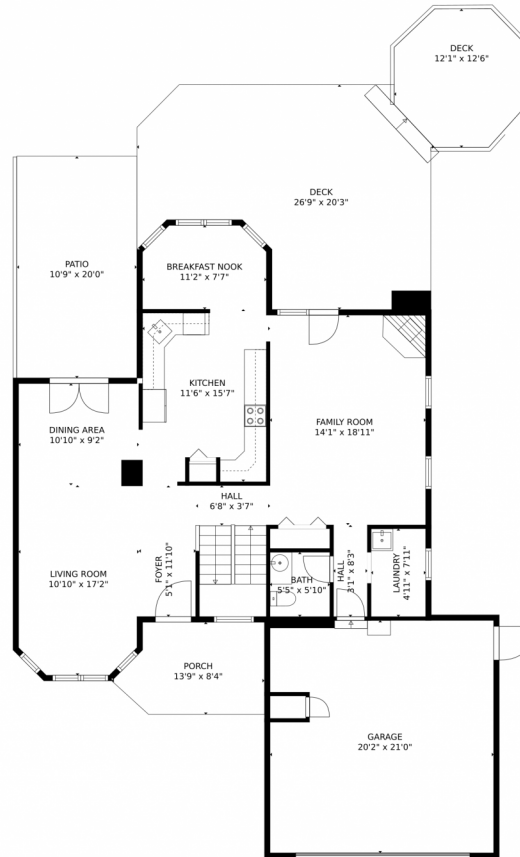
<https://colorado.wedgewoodhomesrealty.com>



Scan code
for more
property
details



59 Ironweed Drive, Pueblo, CO 81001 – Main Level



GROSS INTERNAL AREA
Below Ground: 922 sq. ft, FLOOR 2: 1073 sq. ft, FLOOR 3: 1008 sq. ft
EXCLUDED AREAS: ELECTRICAL ROOM: 176 sq. ft, UNDEFINED: 6 sq. ft, DECK: 552 sq. ft,
PATIO: 217 sq. ft, PORCH: 99 sq. ft, GARAGE: 414 sq. ft,
BALCONY: 130 sq. ft, OPEN TO BELOW: 357 sq. ft
TOTAL: 3003 sq. ft
MEASUREMENTS CALCULATED BY V1Photos.COM ARE DEEMED HIGHLY RELIABLE BUT NOT GUARANTEED.



Disclaimer: Sizes and Dimensions are Approximate, Actual May Vary.



Jordan Kermes

952-956-2958

jkermes@wedgewoodhomesrealty.com

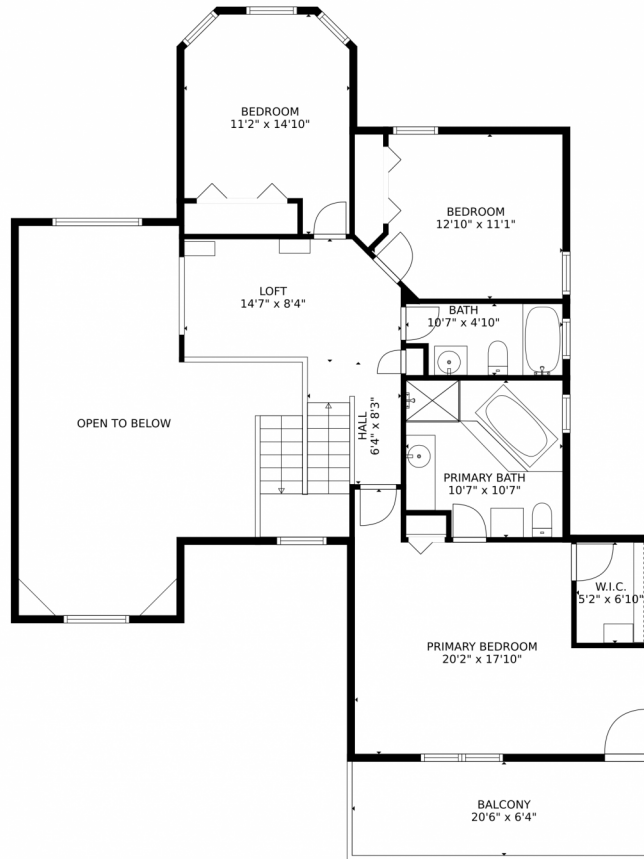
<https://colorado.wedgewoodhomesrealty.com>



Scan code
for more
property
details



59 Ironweed Drive, Pueblo, CO 81001 – Upper Level



GROSS INTERNAL AREA
Below Ground: 922 sq. ft, FLOOR 2: 1073 sq. ft, FLOOR 3: 1008 sq. ft
EXCLUDED AREAS: ELECTRICAL ROOM: 176 sq. ft, UNDEFINED: 6 sq. ft, DECK: 552 sq. ft,
PATIO: 217 sq. ft, PORCH: 99 sq. ft, GARAGE: 414 sq. ft,
BALCONY: 130 sq. ft, OPEN TO BELOW: 357 sq. ft
TOTAL: 3003 sq. ft
MEASUREMENTS CALCULATED BY V1Photos.com ARE DEEMED HIGHLY RELIABLE BUT NOT GUARANTEED.

Disclaimer: Sizes and Dimensions are Approximate, Actual May Vary.



Jordan Kermes

952-956-2958

jkermes@wedgewoodhomesrealty.com

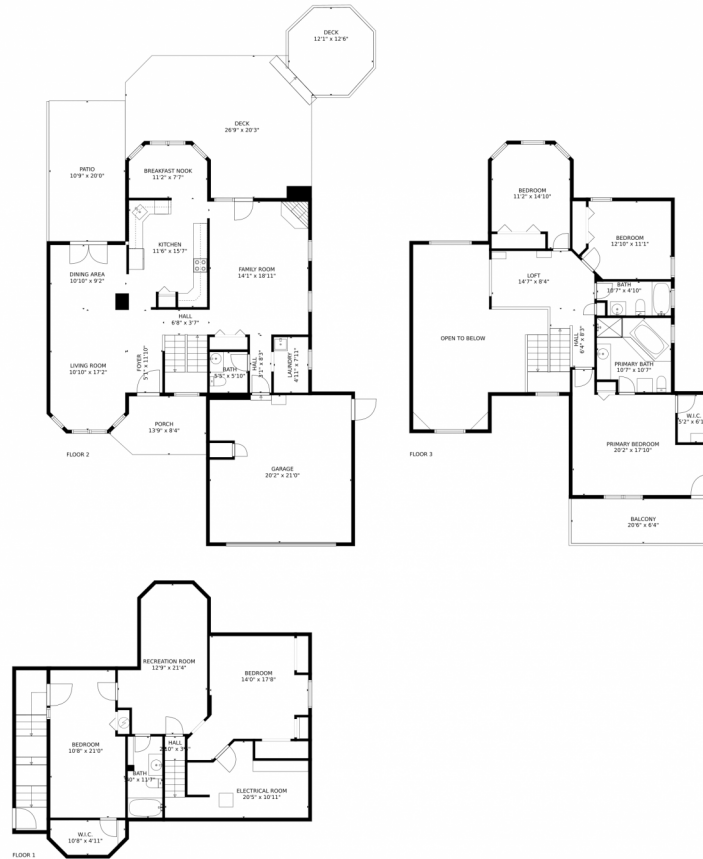
<https://colorado.wedgewoodhomesrealty.com>



Scan code
for more
property
details



59 Ironweed Drive, Pueblo, CO 81001 – All Levels



GROSS INTERNAL AREA
Below Ground: 922 sq. ft, FLOOR 2: 1073 sq. ft, FLOOR 3: 1008 sq. ft
EXCLUDED AREAS: ELECTRICAL ROOM: 176 sq. ft, UNDEFINED: 6 sq. ft, DECK: 552 sq. ft,
PATIO: 217 sq. ft, PORCH: 99 sq. ft, GARAGE: 414 sq. ft,
BALCONY: 130 sq. ft, OPEN TO BELOW: 357 sq. ft
TOTAL: 3003 sq. ft
MEASUREMENTS CALCULATED BY V1Photos.COM ARE DEEMED HIGHLY RELIABLE BUT NOT GUARANTEED.



Disclaimer: Sizes and Dimensions are Approximate, Actual May Vary.



Jordan Kermes

952-956-2958

jkermes@wedgewoodhomesrealty.com

<https://colorado.wedgewoodhomesrealty.com>



Scan code
for more
property
details

