



5341 Peak View Court
 Windsor, CO 80550
COMMUNITY: Steeplechase

MLS # IR998362
PRICE \$1,330,000



Single Family



4571 SQFT



6 Beds



4/1 Baths



3 Car



2.4 Acre



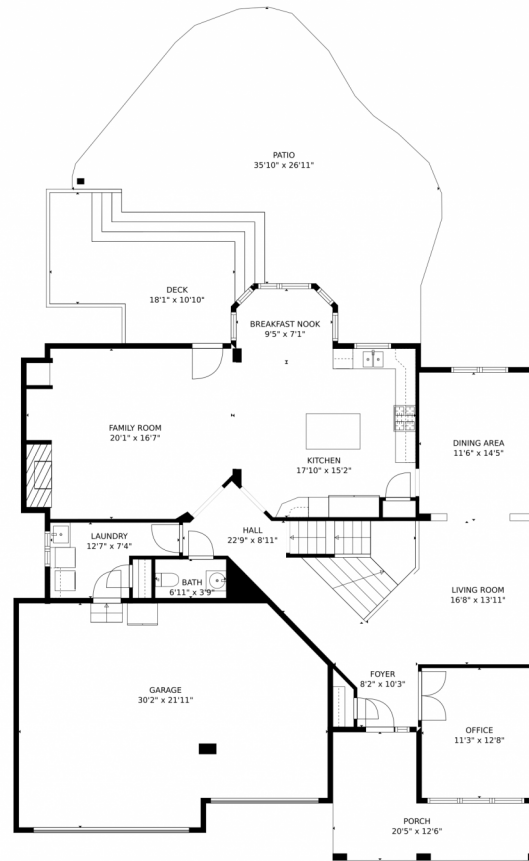
Alexis Foster
 970-310-6999
 alexisfoster@windermere.com



Scan code
 for more
 property
 details



5341 Peak View Court, Windsor, CO 80550 – Main Level



GROSS INTERNAL AREA
Below Ground: 1237 sq. ft, FLOOR 2: 1562 sq. ft, FLOOR 3: 1343 sq. ft
EXCLUDED AREAS: STORAGE: 101 sq. ft, FIREPLACE: 2 sq. ft, GARAGE: 606 sq. ft.
PORCH: 171 sq. ft, DECK: 169 sq. ft, PATIO: 635 sq. ft,
OPEN TO BELOW: 577 sq. ft
TOTAL: 4142 sq. ft
MEASUREMENTS CALCULATED BY V1Photos.com ARE DEEMED HIGHLY RELIABLE BUT NOT GUARANTEED.



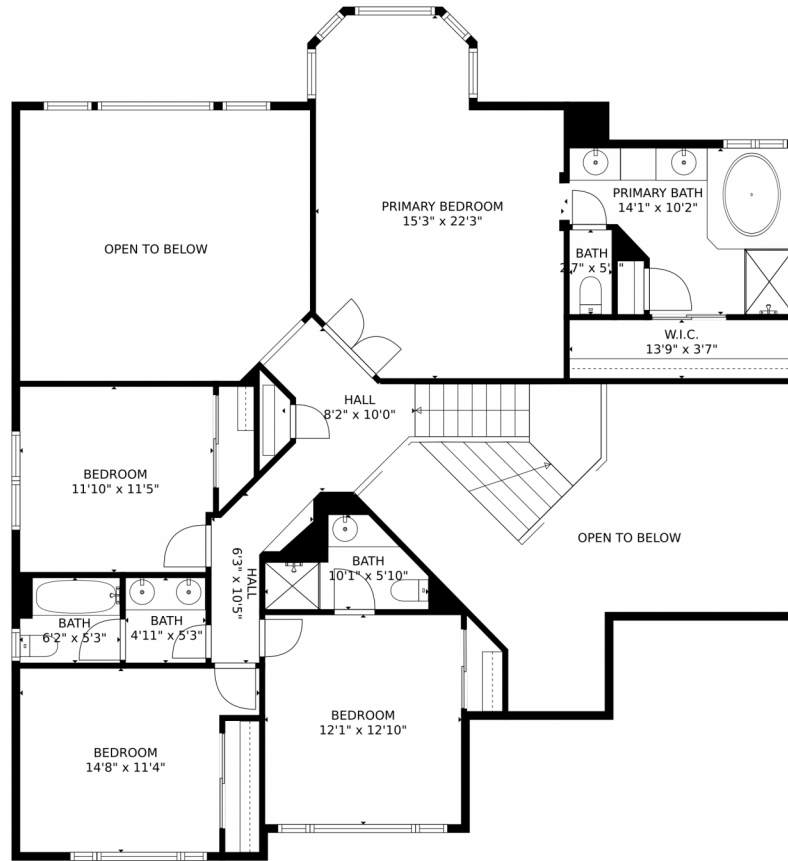
Disclaimer: Sizes and Dimensions are Approximate, Actual May Vary.



Alexis Foster
970-310-6999
alexisfoster@windermere.com



5341 Peak View Court, Windsor, CO 80550 – Upper Level



GROSS INTERNAL AREA
Below Ground: 1237 sq. ft, FLOOR 2: 1562 sq. ft, FLOOR 3: 1343 sq. ft
EXCLUDED AREAS: STORAGE: 101 sq. ft, FIREPLACE: 2 sq. ft, GARAGE: 606 sq. ft,
PORCH: 171 sq. ft, DECK: 169 sq. ft, PATIO: 635 sq. ft,
OPEN TO BELOW: 577 sq. ft
TOTAL: 4142 sq. ft
MEASUREMENTS CALCULATED BY V1Photos.com ARE DEEMED HIGHLY RELIABLE BUT NOT GUARANTEED.



Disclaimer: Sizes and Dimensions are Approximate, Actual May Vary.

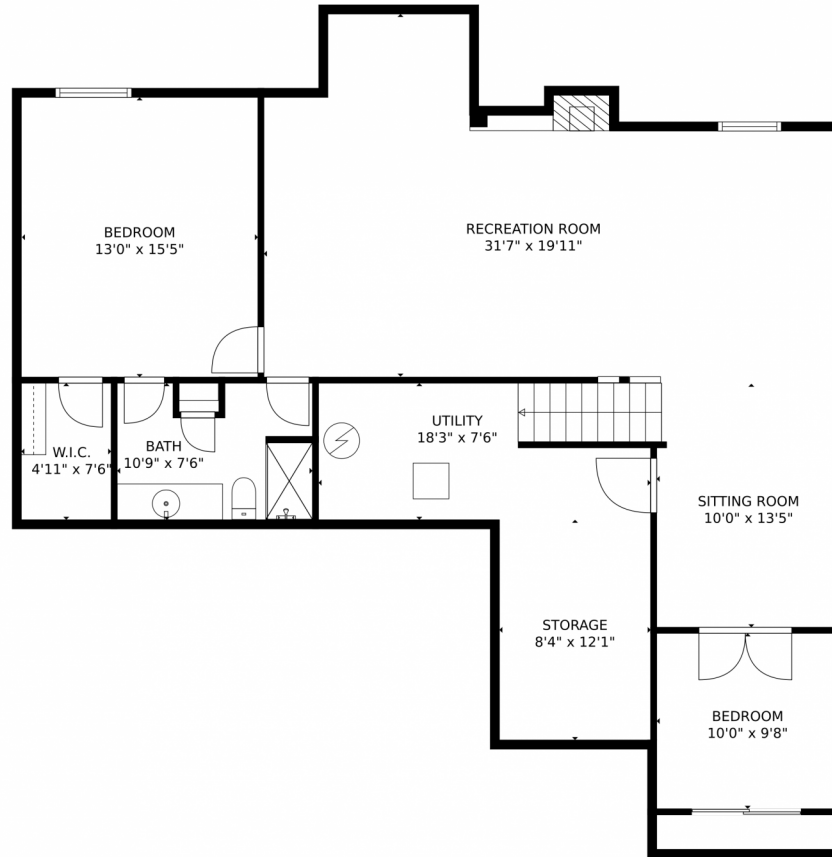


Alexis Foster
970-310-6999
alexisfoster@windermere.com



Scan code
for more
property
details

5341 Peak View Court, Windsor, CO 80550 – Lowel Level



GROSS INTERNAL AREA
Below Ground: 1237 sq. ft, FLOOR 2: 1562 sq. ft, FLOOR 3: 1343 sq. ft
EXCLUDED AREAS: STORAGE: 101 sq. ft, FIREPLACE: 2 sq. ft, GARAGE: 606 sq. ft,
PORCH: 171 sq. ft, DECK: 169 sq. ft, PATIO: 635 sq. ft,
OPEN TO BELOW: 577 sq. ft
TOTAL: 4142 sq. ft
MEASUREMENTS CALCULATED BY V1Photos.com ARE DEEMED HIGHLY RELIABLE BUT NOT GUARANTEED.



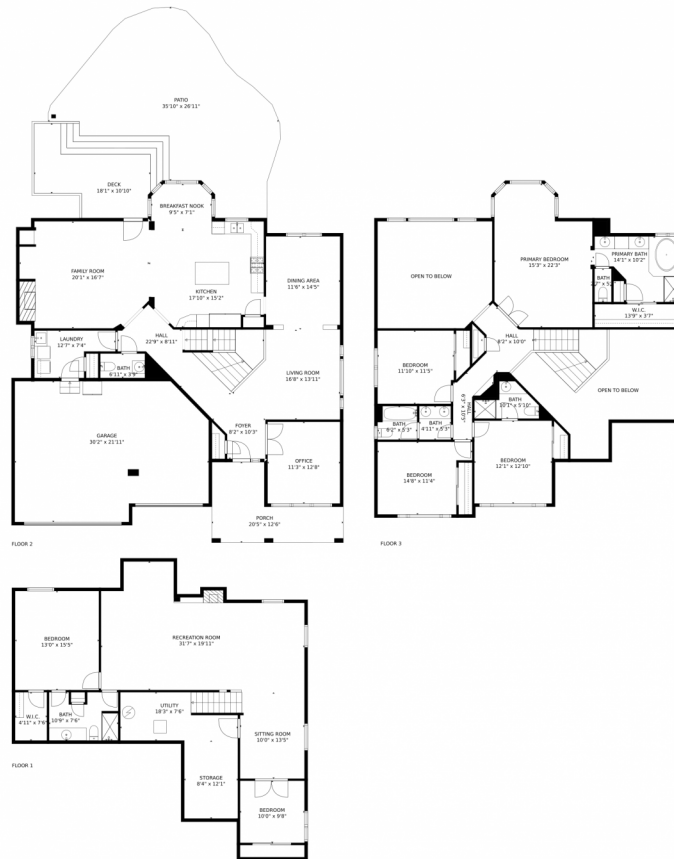
Disclaimer: Sizes and Dimensions are Approximate, Actual May Vary.



Alexis Foster
970-310-6999
alexisfoster@windermere.com



5341 Peak View Court, Windsor, CO 80550 – All Levels



GROSS INTERNAL AREA
 Below Ground: 1237 sq. ft, FLOOR 2: 1562 sq. ft, FLOOR 3: 1343 sq. ft
EXCLUDED AREAS: STORAGE: 101 sq. ft, FIREPLACE: 2 sq. ft, GARAGE: 606 sq. ft,
 PORCH: 171 sq. ft, DECK: 169 sq. ft, PATIO: 635 sq. ft,
 OPEN TO BELOW: 577 sq. ft
TOTAL: 4142 sq. ft
 MEASUREMENTS CALCULATED BY V1Photos.COM ARE DEEMED HIGHLY RELIABLE BUT NOT GUARANTEED.



Disclaimer: Sizes and Dimensions are Approximate, Actual May Vary.



Alexis Foster
 970-310-6999
 alexisfoster@windermere.com

