



 Single Family
  1796 SQFT
  2 Beds
  2/1 Baths
  2 Car
  1.2 Acre

PROPERTY DETAILS

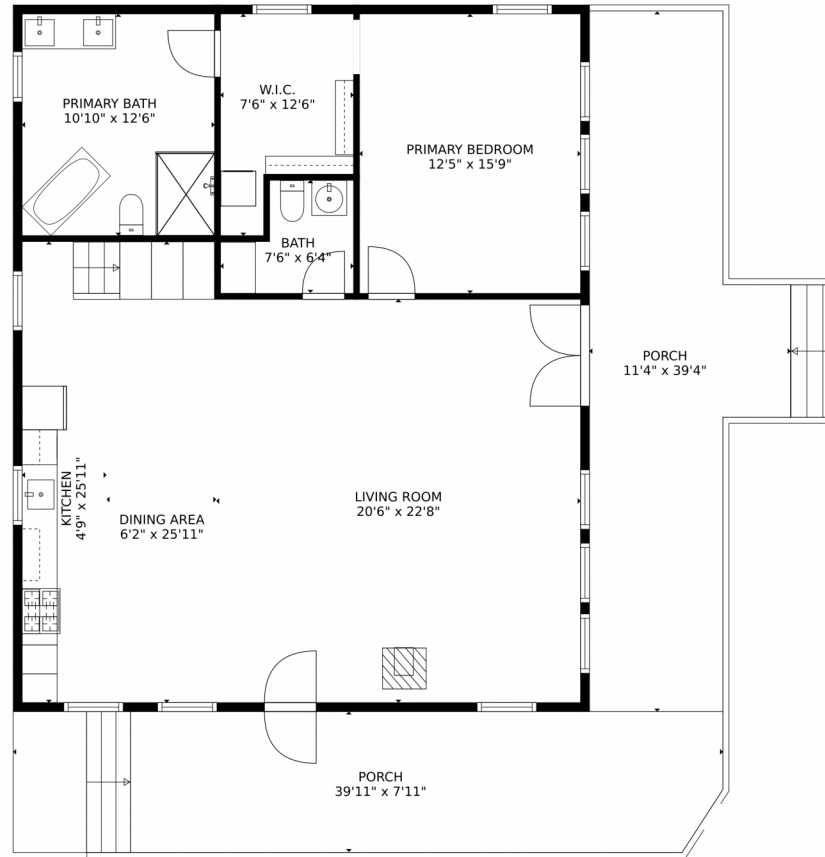
Welcome to this beautiful property in Richmond Hill, Conifer, CO. This single-family home offers 2 bedrooms, 2.5 bathrooms, and 2000 sqft of living space. It features a 2-car garage for vehicle safety. The interior entryway welcomes you with sunlight. The kitchen is a chef's dream with stainless steel appliances and white cabinets. The dining area has a wood stove and high vaulted ceiling. The living room is cozy with a wood stove, french doors, and high ceiling. The primary bedroom has a ceiling fan and natural light. Outside, enjoy mountain views from the balcony and front lawn. The property also has a yard for outdoor activities. This property is a gem in Richmond Hill.



Kevin Wilson
 303-720-6777
 kevinwilson@kevinwilson.com



26501 Molly Drive, Conifer, CO 80433 – Main



GROSS INTERNAL AREA
Below Ground: 1215 sq. ft, FLOOR 2: 0 sq. ft, Below Ground: 171 sq. ft, FLOOR 4: 494 sq. ft
EXCLUDED AREAS: PORCH: 636 sq. ft, GARAGE: 566 sq. ft, ATTIC: 345 sq. ft,
OPEN TO BELOW: 721 sq. ft
TOTAL: 1880 sq. ft
MEASUREMENTS CALCULATED BY V1Photos.com ARE DEEMED HIGHLY RELIABLE BUT NOT GUARANTEED.



Disclaimer: Sizes and Dimensions are Approximate, Actual May Vary.



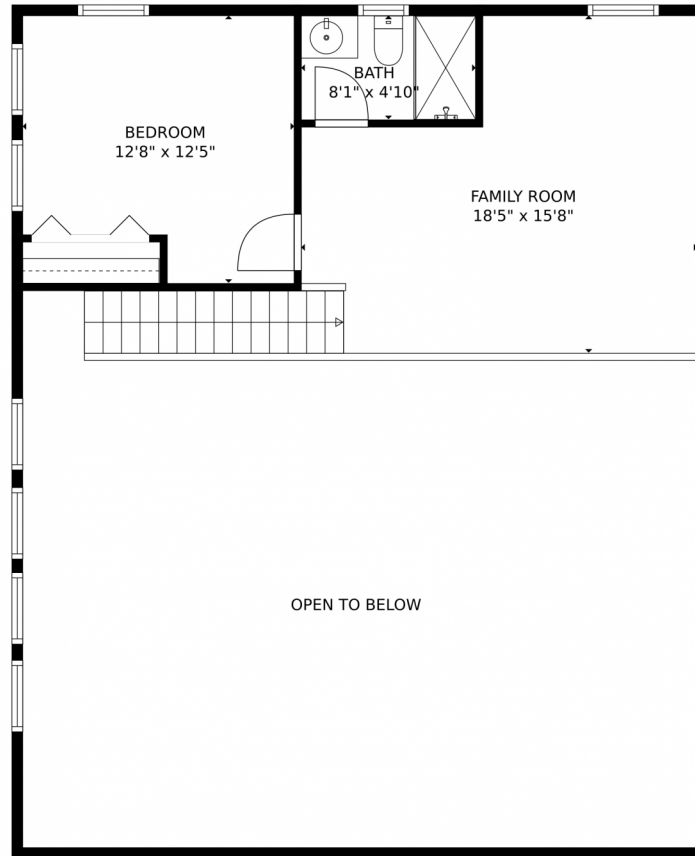
Kevin Wilson
303-720-6777
kevinwilson@kevinwilson.com



Scan code
for more
property
details



26501 Molly Drive, Conifer, CO 80433 – 2nd Level



GROSS INTERNAL AREA
Below Ground: 1215 sq. ft, FLOOR 2: 0 sq. ft, Below Ground: 171 sq. ft, FLOOR 4: 494 sq. ft
EXCLUDED AREAS: PORCH: 636 sq. ft, GARAGE: 566 sq. ft, ATTIC: 345 sq. ft,
OPEN TO BELOW: 721 sq. ft
TOTAL: 1880 sq. ft
MEASUREMENTS CALCULATED BY V1Photos.com ARE DEEMED HIGHLY RELIABLE BUT NOT GUARANTEED.

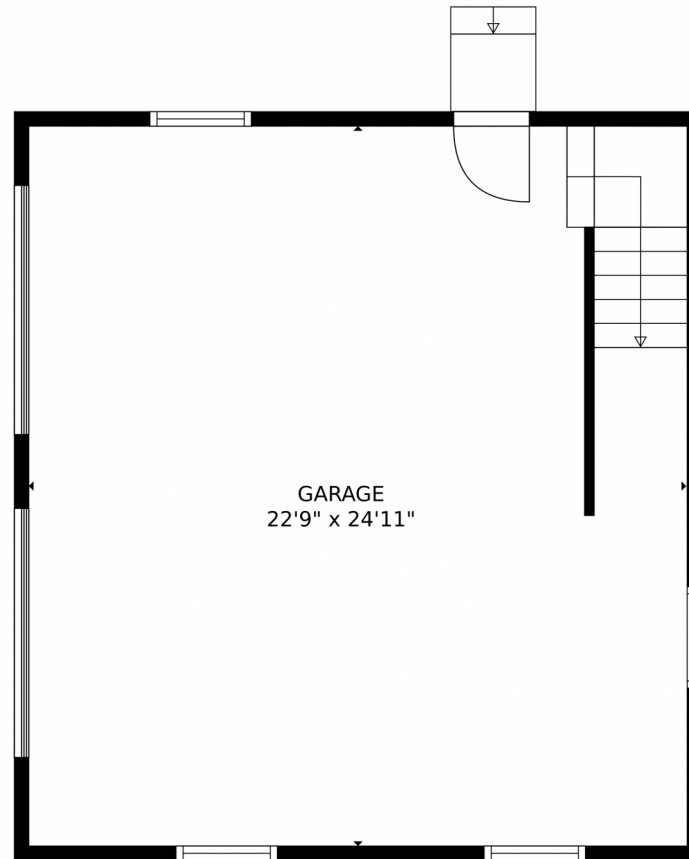


Disclaimer: Sizes and Dimensions are Approximate, Actual May Vary.



Kevin Wilson
303-720-6777
kevinwilson@kevinwilson.com





GROSS INTERNAL AREA
Below Ground: 1215 sq. ft, FLOOR 2: 0 sq. ft, Below Ground: 171 sq. ft, FLOOR 4: 494 sq. ft
EXCLUDED AREAS: PORCH: 636 sq. ft, GARAGE: 566 sq. ft, ATTIC: 345 sq. ft,
OPEN TO BELOW: 721 sq. ft
TOTAL: 1880 sq. ft
MEASUREMENTS CALCULATED BY V1Photos.com ARE DEEMED HIGHLY RELIABLE BUT NOT GUARANTEED.



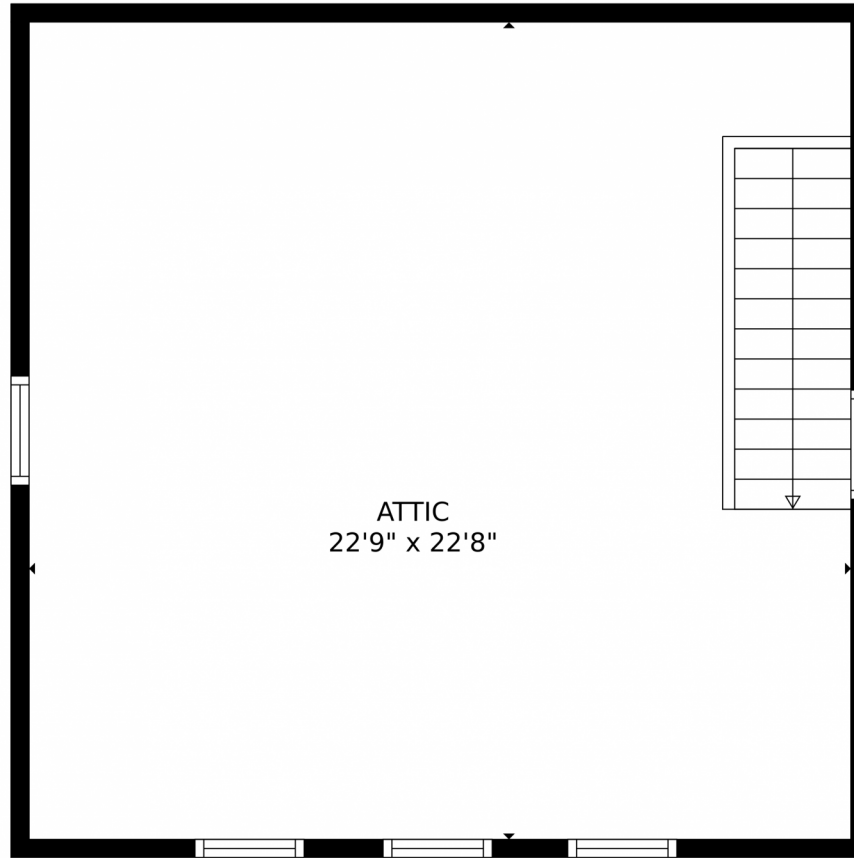
Disclaimer: Sizes and Dimensions are Approximate, Actual May Vary.



Kevin Wilson
303-720-6777
kevinwilson@kevinwilson.com



Scan code
for more
property
details



GROSS INTERNAL AREA
Below Ground: 1215 sq. ft, FLOOR 2: 0 sq. ft, Below Ground: 171 sq. ft, FLOOR 4: 494 sq. ft
EXCLUDED AREAS: PORCH: 636 sq. ft, GARAGE: 566 sq. ft, ATTIC: 345 sq. ft,
OPEN TO BELOW: 721 sq. ft
TOTAL: 1880 sq. ft
MEASUREMENTS CALCULATED BY V1Photos.com ARE DEEMED HIGHLY RELIABLE BUT NOT GUARANTEED.



Disclaimer: Sizes and Dimensions are Approximate, Actual May Vary.



Kevin Wilson
303-720-6777
kevinwilson@kevinwilson.com



Scan code
for more
property
details

26501 Molly Drive, Conifer, CO 80433 – All Levels



GROSS INTERNAL AREA
Below Ground: 1215 sq. ft, FLOOR 2: 0 sq. ft, Below Ground: 171 sq. ft, FLOOR 4: 494 sq. ft
EXCLUDED AREAS: PORCH: 636 sq. ft, GARAGE: 566 sq. ft, ATTIC: 345 sq. ft,
OPEN TO BELOW: 721 sq. ft
TOTAL: 1880 sq. ft
MEASUREMENTS CALCULATED BY V1Photos.com ARE DEEMED HIGHLY RELIABLE BUT NOT GUARANTEED.



Disclaimer: Sizes and Dimensions are Approximate, Actual May Vary.



Kevin Wilson
303-720-6777
kevinwilson@kevinwilson.com

