



3242 Windridge Circle  
 Highlands Ranch, CO 80126  
 COMMUNITY: Firelight at Highlands Ranch

MLS # 7287590  
 PRICE \$825,000

Amazing Firelight Family Home with 5 Bed/4 Bath



Single Family  
 3685 SQFT  
 5 Beds  
 4 Baths  
 2 Car  
 0.13 Acre

PROPERTY DETAILS

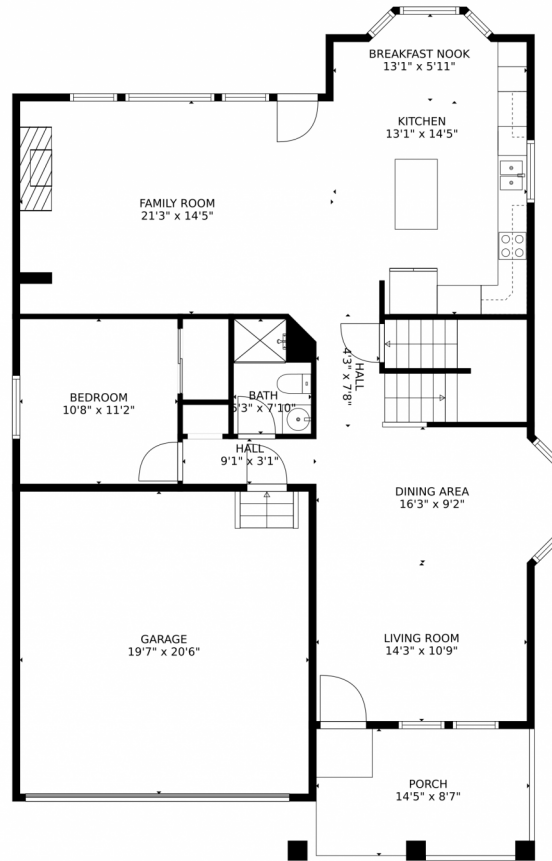
Rare 5 bed, 4 bath home in desirable Firelight at Highlands Ranch. Great family home with three bedrooms upstairs, jack-n-jill bath plus laundry. Additional main floor bedroom can be used as home office. Spacious kitchen includes all stainless steel appliances including a new french door refrigerator. The basement is fully finished with an additional bedroom, gas fireplace, wet bar and a fourth full bath. The backyard is an oasis with a waterfall feature, mature trees and delightful flagstone patio. Located directly across from the neighborhood elementary school, feeding into highly ranked middle and high schools, and access to world-class community ammenities, recreation centers, and miles of protected open space trails! Come tour this home today!



Tom Richardson  
 303-882-5079  
 tarich65@outlook.com  
<https://www.instagram.com/sixstarproperties/>



# 3242 Windridge Circle, Highlands Ranch, CO 80126 – Main Floor



GROSS INTERNAL AREA  
Below Ground: 939 sq. ft, FLOOR 2: 1198 sq. ft, FLOOR 3: 1171 sq. ft  
EXCLUDED AREAS: STORAGE: 42 sq. ft, ELECTRICAL ROOM: 61 sq. ft, PORCH: 124 sq. ft.  
GARAGE: 401 sq. ft, OPEN TO BELOW: 308 sq. ft  
TOTAL: 3308 sq. ft  
MEASUREMENTS CALCULATED BY V1Photos.com ARE DEEMED HIGHLY RELIABLE BUT NOT GUARANTEED.



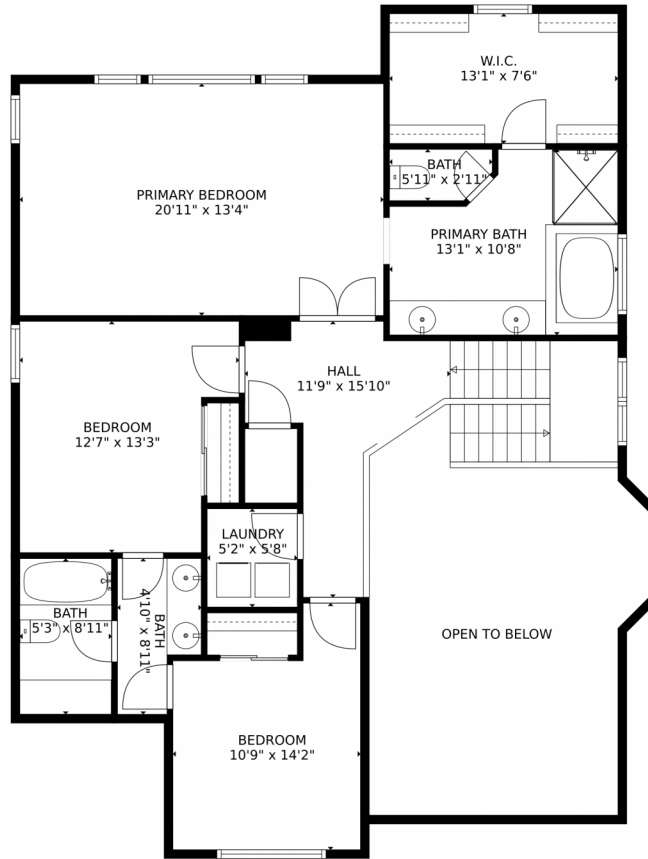
Disclaimer: Sizes and Dimensions are Approximate, Actual May Vary.



**Tom Richardson**  
303-882-5079  
tarich65@outlook.com  
<https://www.instagram.com/sixstarproperties/>



3242 Windridge Circle, Highlands Ranch, CO 80126 — Second Floor



GROSS INTERNAL AREA  
Below Ground: 939 sq. ft, FLOOR 2: 1198 sq. ft, FLOOR 3: 1171 sq. ft  
EXCLUDED AREAS: STORAGE: 42 sq. ft, ELECTRICAL ROOM: 61 sq. ft, PORCH: 124 sq. ft,  
GARAGE: 401 sq. ft, OPEN TO BELOW: 308 sq. ft  
TOTAL: 3308 sq. ft  
MEASUREMENTS CALCULATED BY V1Photos.com ARE DEEMED HIGHLY RELIABLE BUT NOT GUARANTEED.



Disclaimer: Sizes and Dimensions are Approximate, Actual May Vary.

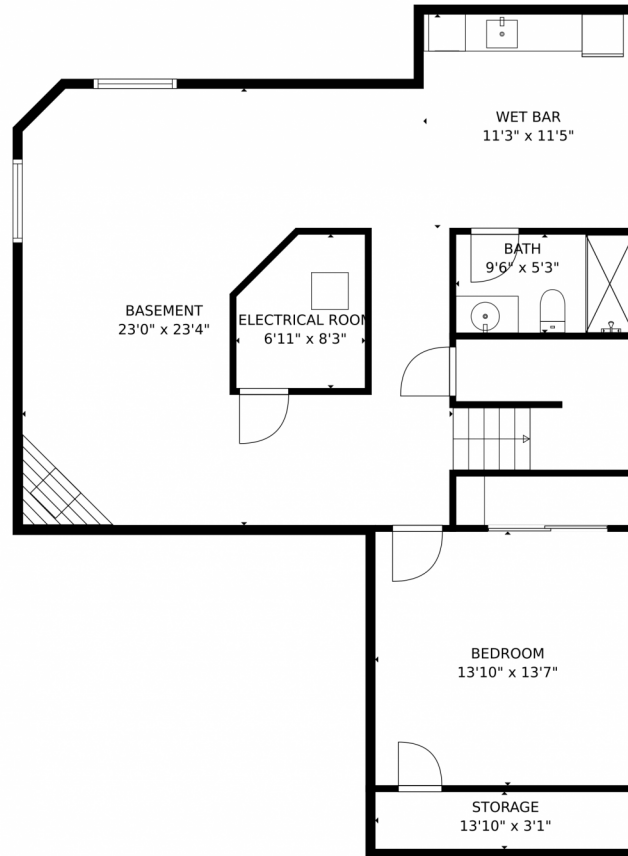


**Tom Richardson**  
303-882-5079  
tarich65@outlook.com  
<https://www.instagram.com/sixstarproperties/>





# 3242 Windridge Circle, Highlands Ranch, CO 80126 — Basement



GROSS INTERNAL AREA  
Below Ground: 939 sq. ft, FLOOR 2: 1198 sq. ft, FLOOR 3: 1171 sq. ft  
EXCLUDED AREAS: STORAGE: 42 sq. ft, ELECTRICAL ROOM: 61 sq. ft, PORCH: 124 sq. ft,  
GARAGE: 401 sq. ft, OPEN TO BELOW: 308 sq. ft  
TOTAL: 3308 sq. ft  
MEASUREMENTS CALCULATED BY V1Photos.com ARE DEEMED HIGHLY RELIABLE BUT NOT GUARANTEED.



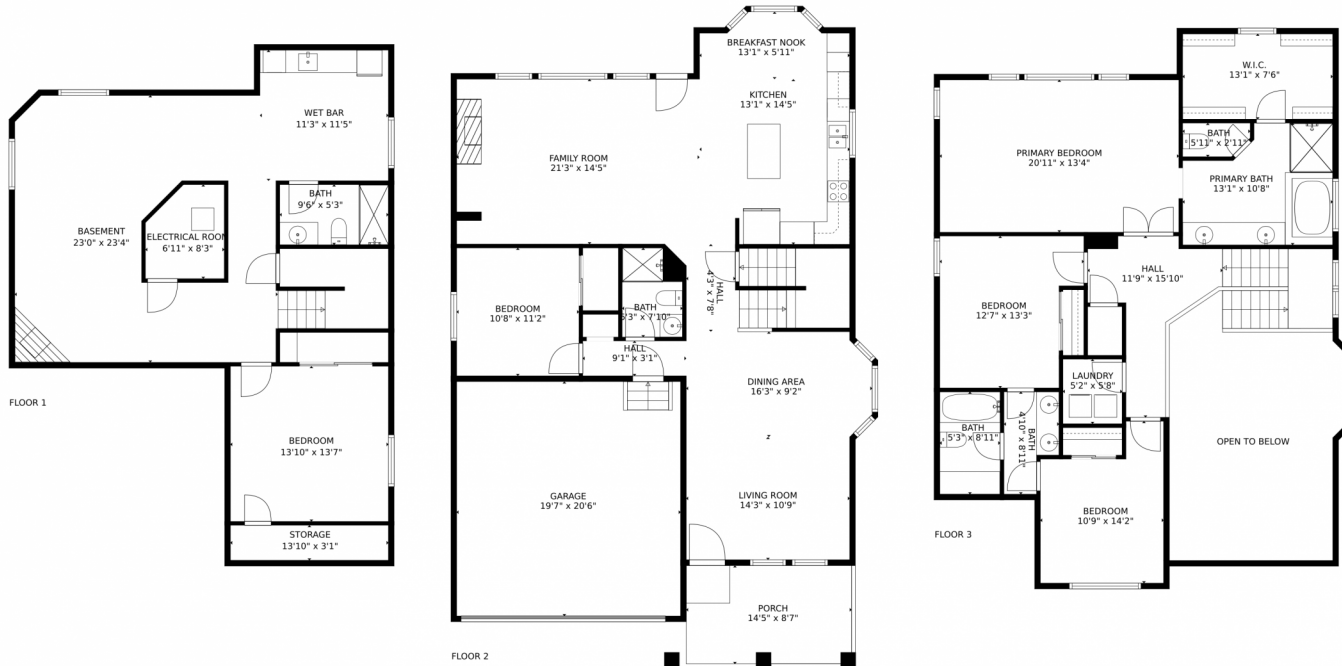
Disclaimer: Sizes and Dimensions are Approximate, Actual May Vary.



**Tom Richardson**  
303-882-5079  
tarich65@outlook.com  
<https://www.instagram.com/sixstarproperties/>



# 3242 Windridge Circle, Highlands Ranch, CO 80126 – All Floors



GROSS INTERNAL AREA  
 Below Ground: 939 sq. ft, FLOOR 2: 1198 sq. ft, FLOOR 3: 1171 sq. ft  
 EXCLUDED AREAS: STORAGE: 42 sq. ft, ELECTRICAL ROOM: 61 sq. ft, PORCH: 124 sq. ft,  
 GARAGE: 401 sq. ft, OPEN TO BELOW: 308 sq. ft  
 TOTAL: 3308 sq. ft  
 MEASUREMENTS CALCULATED BY V1Photos.COM ARE DEEMED HIGHLY RELIABLE BUT NOT GUARANTEED.



Disclaimer: Sizes and Dimensions are Approximate, Actual May Vary.



**Tom Richardson**  
 303-882-5079  
 tarich65@outlook.com  
<https://www.instagram.com/sixstarproperties/>

