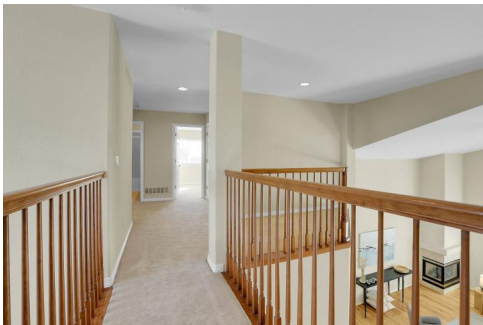




1493 Peninsula Circle  
Castle Rock, CO 80104



Single Family



3161 SQFT



5 Beds



3/1 Baths



3 Car



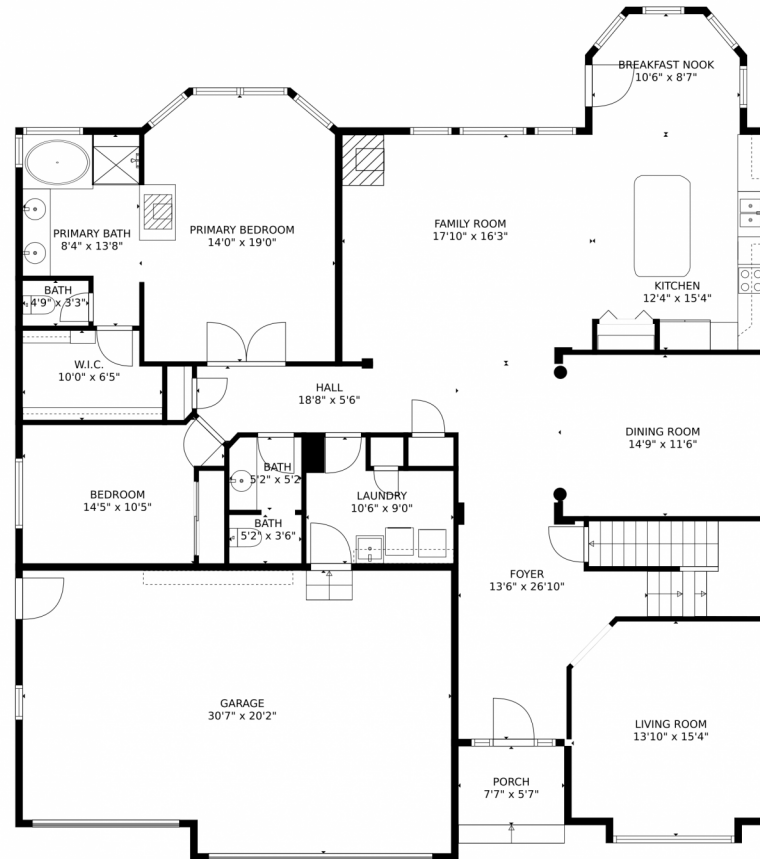
**Erin Carlson**  
303-808-0434  
erincarlson@yourcastle.com  
<https://www.erincarlsonrealty.com/>



Scan code  
for more  
property  
details



# 1493 Peninsula Circle, Castle Rock, CO 80104 – Main Level



GROSS INTERNAL AREA  
Below Ground: 0 sq. ft, FLOOR 2: 2095 sq. ft, FLOOR 3: 862 sq. ft  
EXCLUDED AREAS: UNFINISHED BASEMENT: 1760 sq. ft, GARAGE: 587 sq. ft, PORCH: 42 sq. ft,  
OPEN TO BELOW: 875 sq. ft  
TOTAL: 2957 sq. ft  
MEASUREMENTS CALCULATED BY V1Photos.COM ARE DEEMED HIGHLY RELIABLE BUT NOT GUARANTEED.



Disclaimer: Sizes and Dimensions are Approximate, Actual May Vary.



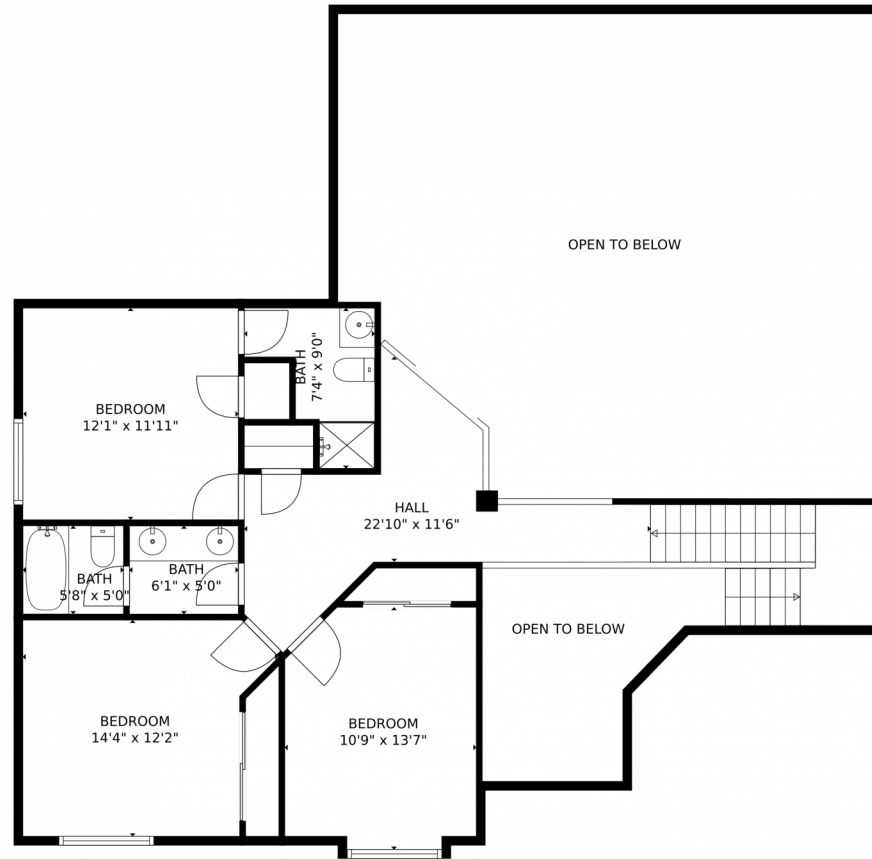
**Erin Carlson**  
303-808-0434  
erincarlson@yourcastle.com  
<https://www.erincarlsonrealty.com/>



Scan code  
for more  
property  
details



# 1493 Peninsula Circle, Castle Rock, CO 80104 – Upper Level



GROSS INTERNAL AREA  
Below Ground: 0 sq. ft, FLOOR 2: 2095 sq. ft, FLOOR 3: 862 sq. ft  
EXCLUDED AREAS: UNFINISHED BASEMENT: 1760 sq. ft, GARAGE: 587 sq. ft, PORCH: 42 sq. ft,  
OPEN TO BELOW: 875 sq. ft  
TOTAL: 2957 sq. ft  
MEASUREMENTS CALCULATED BY V1Photos.COM ARE DEEMED HIGHLY RELIABLE BUT NOT GUARANTEED.

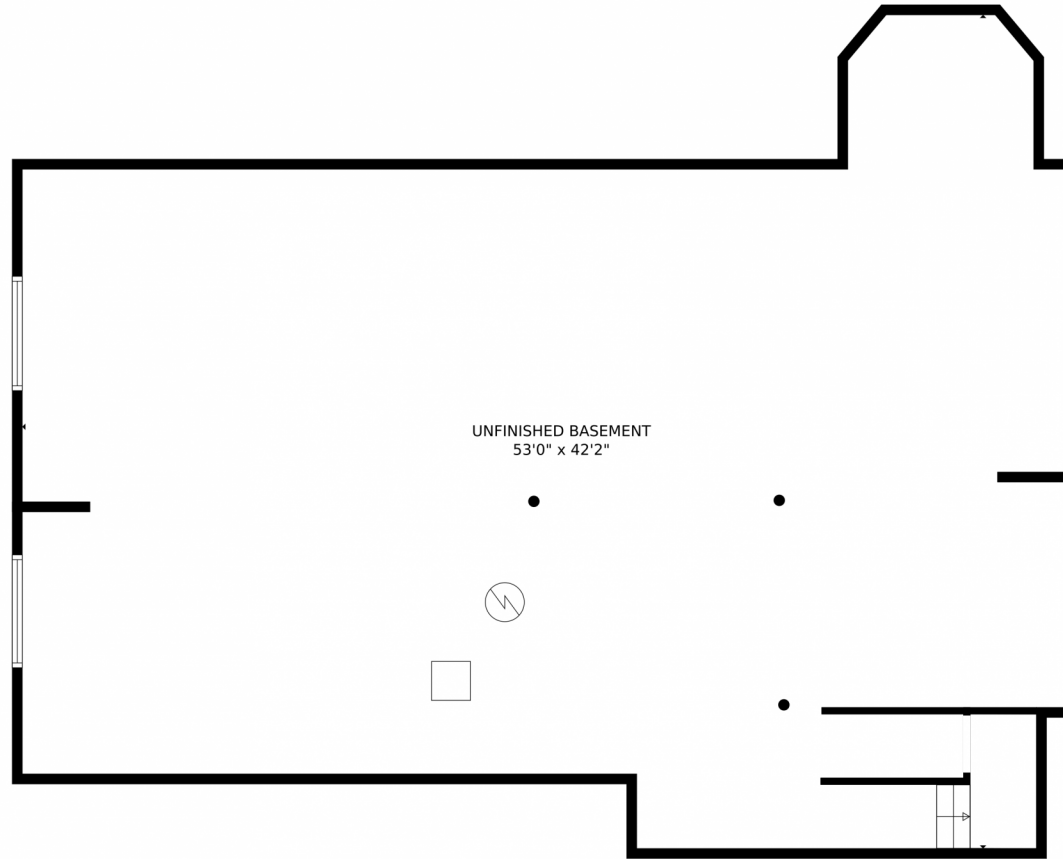
Disclaimer: Sizes and Dimensions are Approximate, Actual May Vary.



**Erin Carlson**  
303-808-0434  
erincarlson@yourcastle.com  
<https://www.erincarlsonrealty.com/>



# 1493 Peninsula Circle, Castle Rock, CO 80104 – Lower Level



GROSS INTERNAL AREA  
Below Ground: 0 sq. ft, FLOOR 2: 2095 sq. ft, FLOOR 3: 862 sq. ft  
EXCLUDED AREAS: UNFINISHED BASEMENT: 1760 sq. ft, GARAGE: 587 sq. ft, PORCH: 42 sq. ft,  
OPEN TO BELOW: 875 sq. ft  
TOTAL: 2957 sq. ft  
MEASUREMENTS CALCULATED BY V1Photos.com ARE DEEMED HIGHLY RELIABLE BUT NOT GUARANTEED.



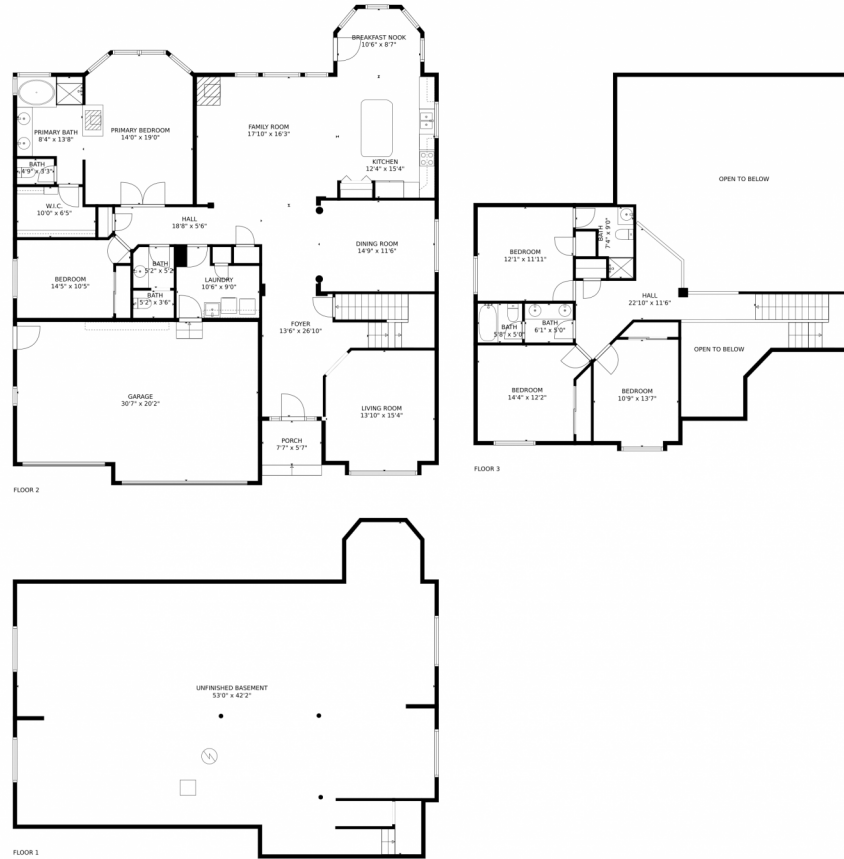
Disclaimer: Sizes and Dimensions are Approximate, Actual May Vary.



**Erin Carlson**  
303-808-0434  
erincarlson@yourcastle.com  
<https://www.erincarlsonrealty.com/>



# 1493 Peninsula Circle, Castle Rock, CO 80104 – All Levels



GROSS INTERNAL AREA  
Below Ground: 0 sq. ft, FLOOR 2: 2095 sq. ft, FLOOR 3: 862 sq. ft  
EXCLUDED AREAS: UNFINISHED BASEMENT: 1760 sq. ft, GARAGE: 587 sq. ft, PORCH: 42 sq. ft,  
OPEN TO BELOW: 875 sq. ft  
TOTAL: 2957 sq. ft  
MEASUREMENTS CALCULATED BY V1Photos.com ARE DEEMED HIGHLY RELIABLE BUT NOT GUARANTEED.



Disclaimer: Sizes and Dimensions are Approximate, Actual May Vary.



**Erin Carlson**  
303-808-0434  
erincarlson@yourcastle.com  
<https://www.erincarlsonrealty.com/>

