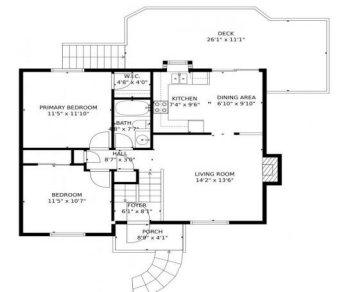




2131 Steele Street, Longmont, CO 80501 - Main Level



Single Family



1241 SQFT



3 Beds



1/1 Baths



2 Car



0.2 Acre



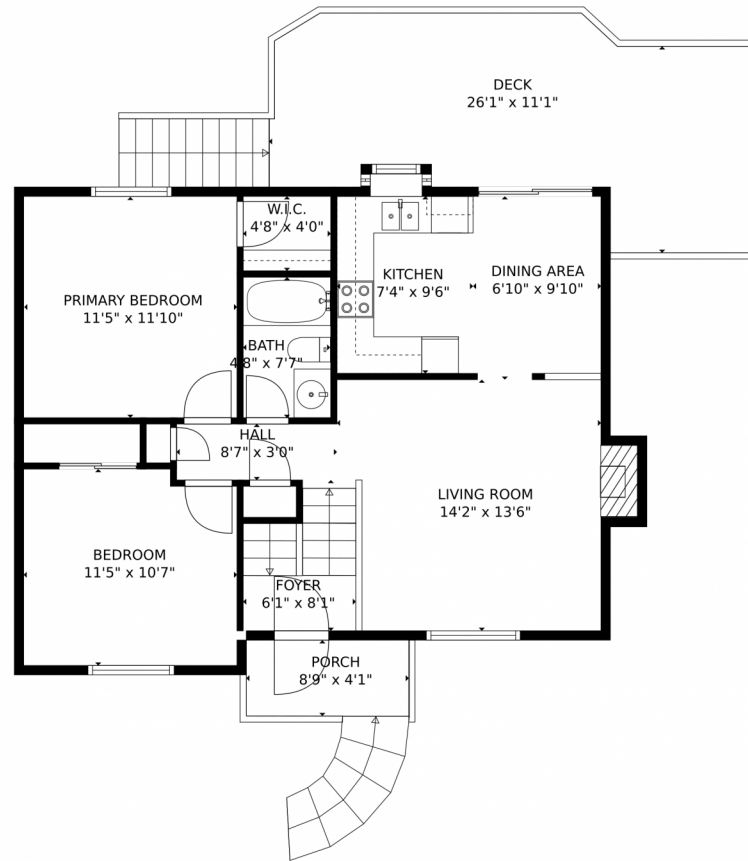
Katie Robinson
970-430-9630
katierobinson@windermere.com



Scan code
for more
property
details



2131 Steele Street, Longmont, CO 80501 – Main Level



GROSS INTERNAL AREA
Below Ground: 450 sq. ft. FLOOR 2: 750 sq. ft.
EXCLUDED AREAS: GARAGE: 423 sq. ft. COVERED PATIO: 337 sq. ft. FIREPLACE: 12 sq. ft.
DECK: 248 sq. ft. PORCH: 36 sq. ft.
TOTAL: 1200 sq. ft.
MEASUREMENTS CALCULATED BY V1Photos.com ARE DEEMED HIGHLY RELIABLE BUT NOT GUARANTEED.



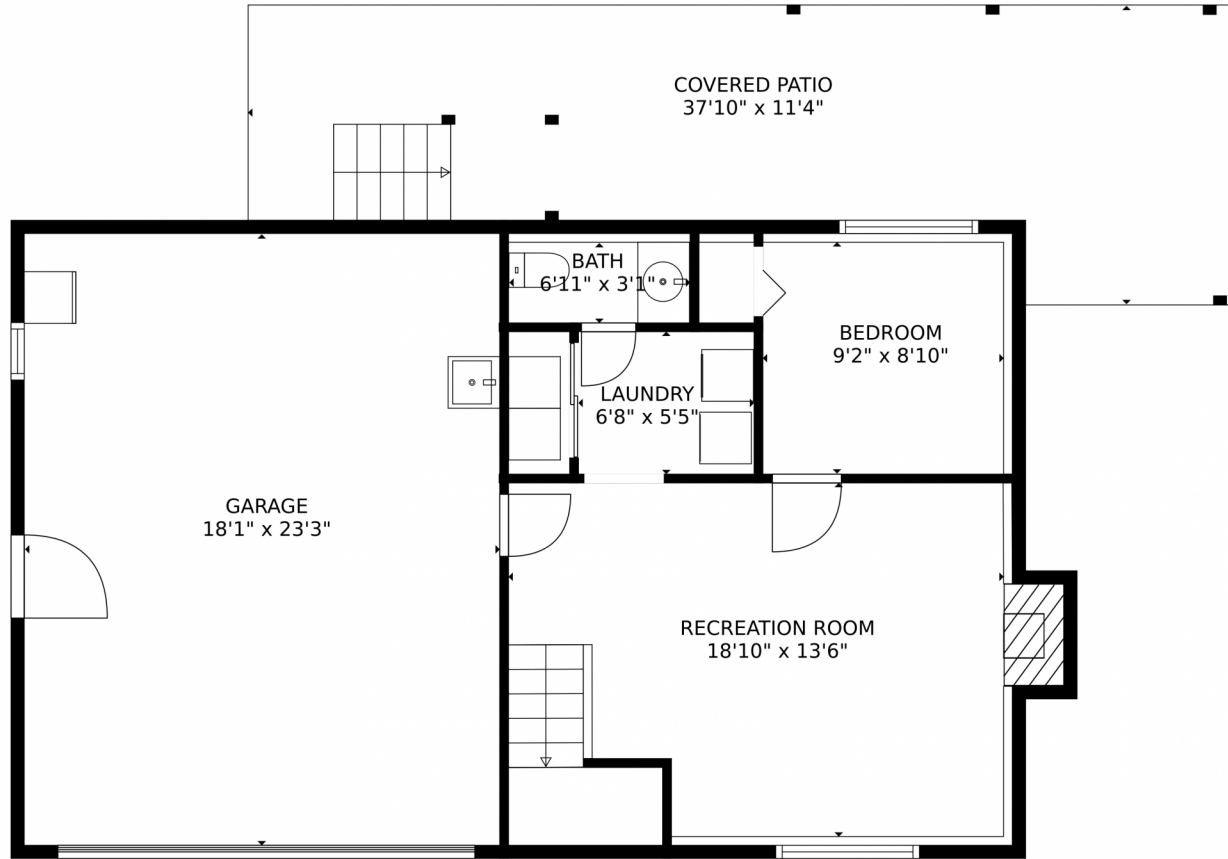
Disclaimer: Sizes and Dimensions are Approximate, Actual May Vary.



Katie Robinson
970-430-9630
katierobinson@windermere.com



2131 Steele Street, Longmont, CO 80501 – Lower Level



GROSS INTERNAL AREA
Below Ground: 450 sq. ft. FLOOR 2: 750 sq. ft.
EXCLUDED AREAS: GARAGE: 423 sq. ft. COVERED PATIO: 337 sq. ft. FIREPLACE: 12 sq. ft.
DECK: 248 sq. ft. PORCH: 36 sq. ft.
TOTAL: 1200 sq. ft.
MEASUREMENTS CALCULATED BY V1Photos.com ARE DEEMED HIGHLY RELIABLE BUT NOT GUARANTEED.

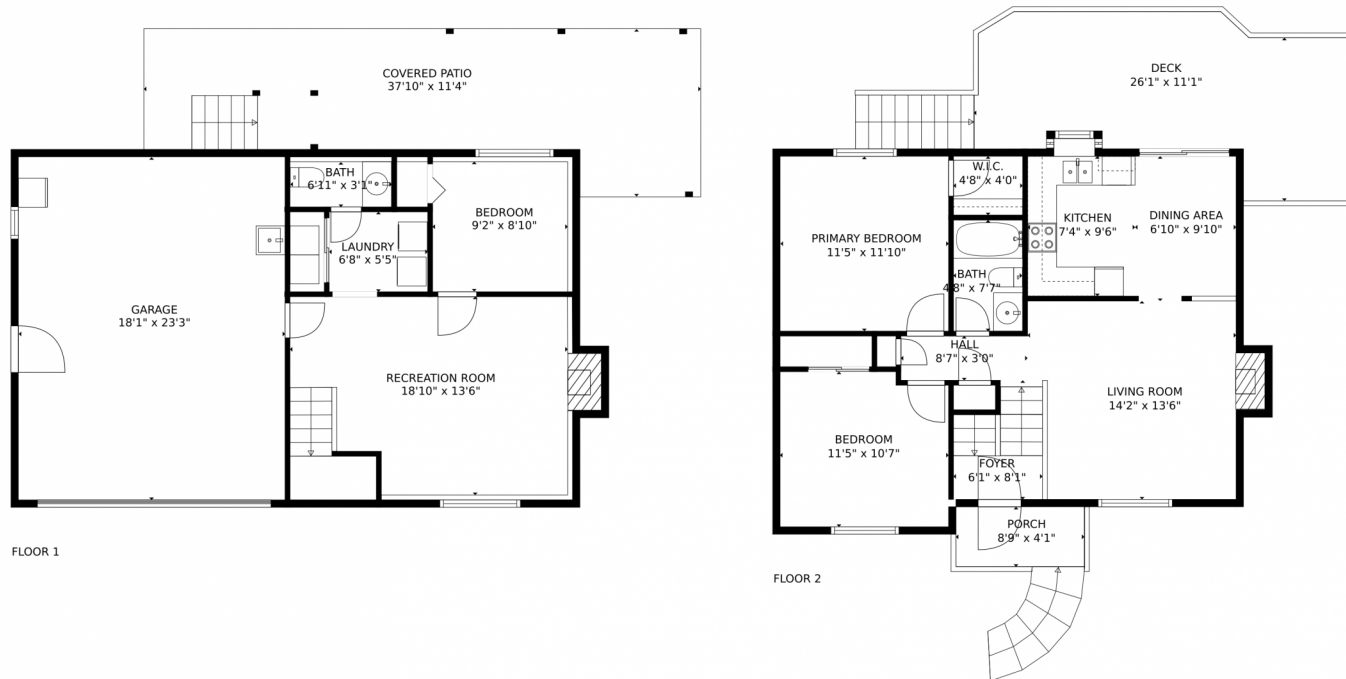
Disclaimer: Sizes and Dimensions are Approximate, Actual May Vary.



Katie Robinson
970-430-9630
katierobinson@windermere.com



2131 Steele Street, Longmont, CO 80501 – All Levels



GROSS INTERNAL AREA
Below Ground: 450 sq. ft. FLOOR 2: 750 sq. ft.
EXCLUDED AREAS: GARAGE: 423 sq. ft. COVERED PATIO: 337 sq. ft. FIREPLACE: 12 sq. ft.
DECK: 248 sq. ft. PORCH: 36 sq. ft.
TOTAL: 1200 sq. ft.
MEASUREMENTS CALCULATED BY V1Photos.com ARE DEEMED HIGHLY RELIABLE BUT NOT GUARANTEED.



Disclaimer: Sizes and Dimensions are Approximate, Actual May Vary.



Katie Robinson
970-430-9630
katierobinson@windermere.com

