



Single Family



1971 SQFT



3 Beds



2 Baths



0.88 Acre



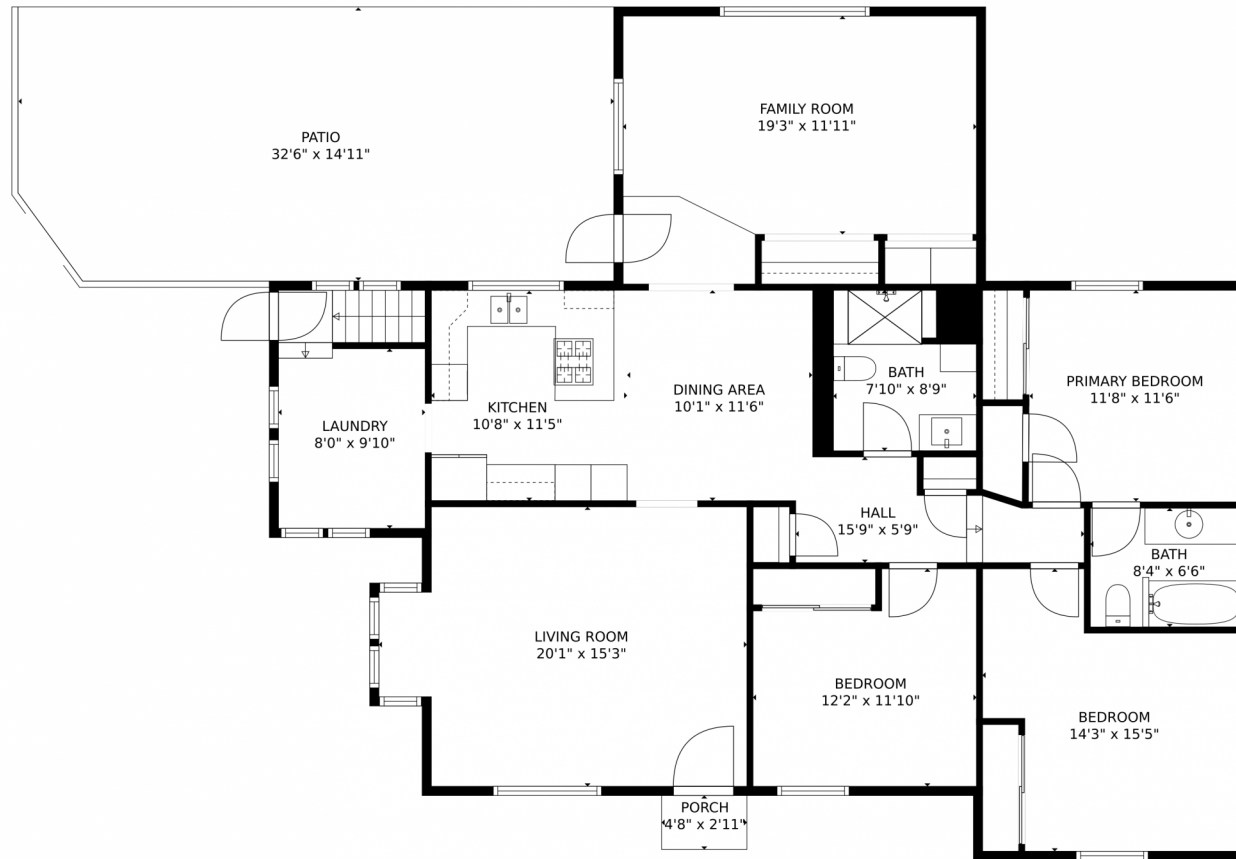
Kyle Doerfler
605-377-3219
kdoerfler@windermere.com



Scan code
for more
property
details



312 A Street, Ault, CO 80610 – Main Level



GROSS INTERNAL AREA
Below Ground: 17 sq. ft, FLOOR 2: 1662 sq. ft
EXCLUDED AREAS: STORAGE: 69 sq. ft, UNFINISHED BASEMENT: 195 sq. ft, PORCH: 14 sq. ft,
PATIO: 478 sq. ft
TOTAL: 1679 sq. ft
MEASUREMENTS CALCULATED BY V1Photos.COM ARE DEEMED HIGHLY RELIABLE BUT NOT GUARANTEED.

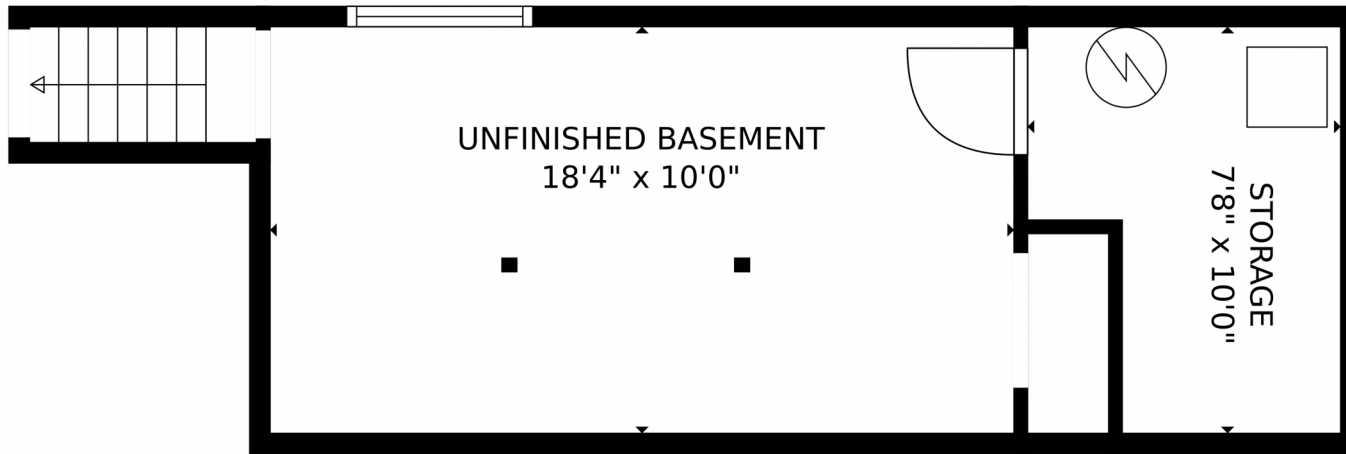


Disclaimer: Sizes and Dimensions are Approximate, Actual May Vary.



Kyle Doerfler
605-377-3219
kdoerfler@windermere.com





GROSS INTERNAL AREA
Below Ground: 17 sq. ft, FLOOR 2: 1662 sq. ft
EXCLUDED AREAS: STORAGE: 69 sq. ft, UNFINISHED BASEMENT: 195 sq. ft, PORCH: 14 sq. ft,
PATIO: 478 sq. ft
TOTAL: 1679 sq. ft
MEASUREMENTS CALCULATED BY V1Photos.com ARE DEEMED HIGHLY RELIABLE BUT NOT GUARANTEED.



Disclaimer: Sizes and Dimensions are Approximate, Actual May Vary.

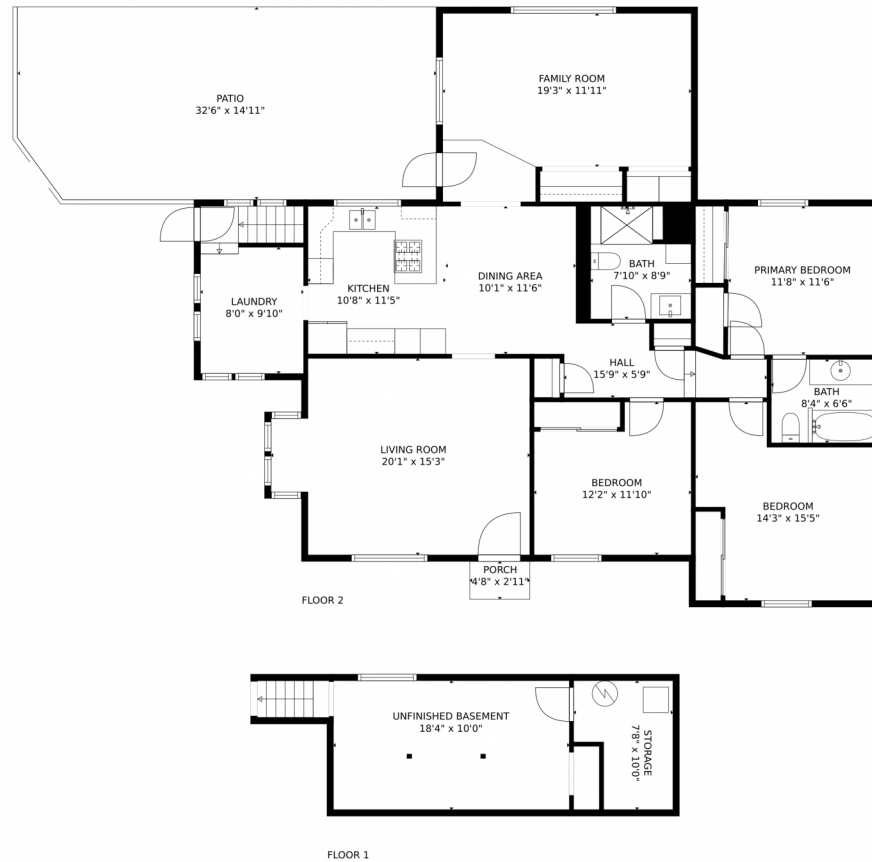


Kyle Doerfler
605-377-3219
kdoerfler@windermere.com



Scan code
for more
property
details

312 A Street, Ault, CO 80610 – All Levels



GROSS INTERNAL AREA
Below Ground: 17 sq. ft, FLOOR 2: 1662 sq. ft
EXCLUDED AREAS: STORAGE: 69 sq. ft, UNFINISHED BASEMENT: 195 sq. ft, PORCH: 14 sq. ft,
PATIO: 478 sq. ft
TOTAL: 1679 sq. ft
MEASUREMENTS CALCULATED BY V1Photos.COM ARE DEEMED HIGHLY RELIABLE BUT NOT GUARANTEED.



Disclaimer: Sizes and Dimensions are Approximate, Actual May Vary.



Kyle Doerfler
605-377-3219
kdoerfler@windermere.com

