



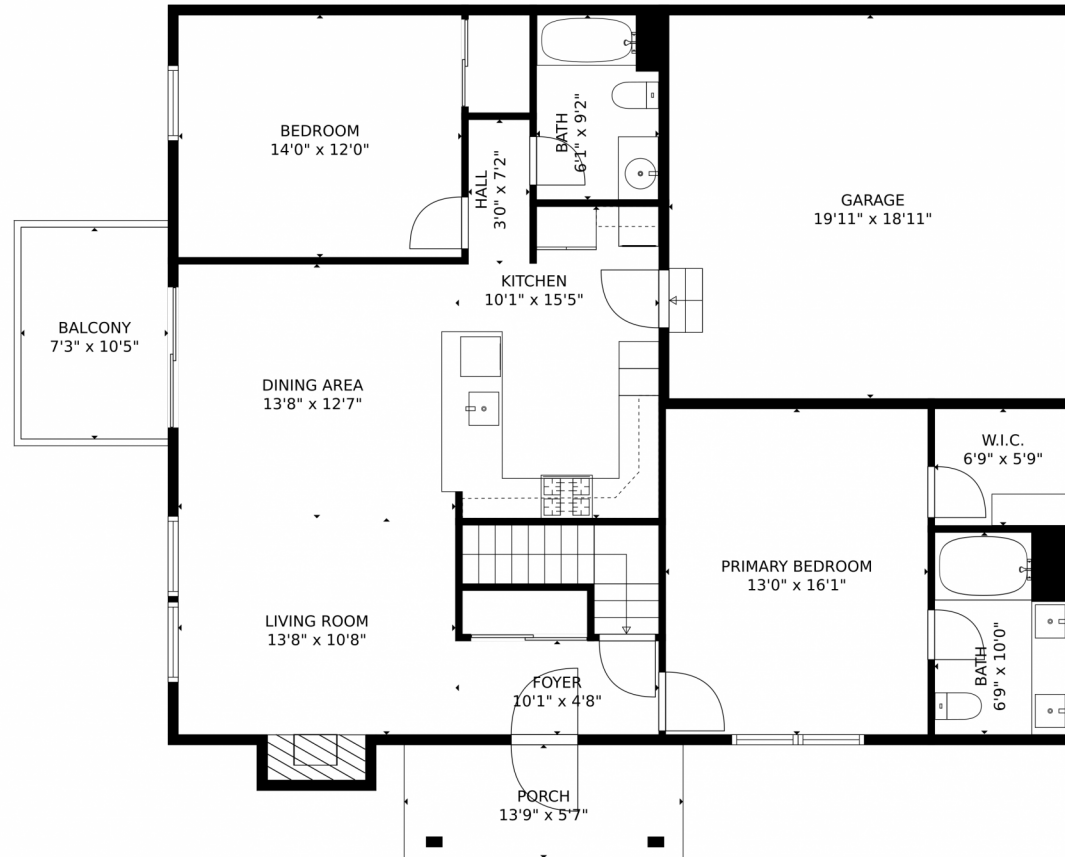
 Multi Family    2171 SQFT    2 Beds    2 Baths    2 Car    0.07 Acre



**Kyle Doerfler**  
605-377-3219  
kdoerfler@windermere.com



# 2226 Copper Creek Drive, Fort Collins, CO 80528 – Main Level



GROSS INTERNAL AREA  
Below Ground: 0 sq. ft. FLOOR 2: 1176 sq. ft.  
EXCLUDED AREAS: UNFINISHED BASEMENT: 808 sq. ft. PORCH: 77 sq. ft. BALCONY: 76 sq. ft.  
GARAGE: 377 sq. ft. FIREPLACE: 9 sq. ft.  
TOTAL: 1176 sq. ft.  
MEASUREMENTS CALCULATED BY V1Photos.COM ARE DEEMED HIGHLY RELIABLE BUT NOT GUARANTEED.

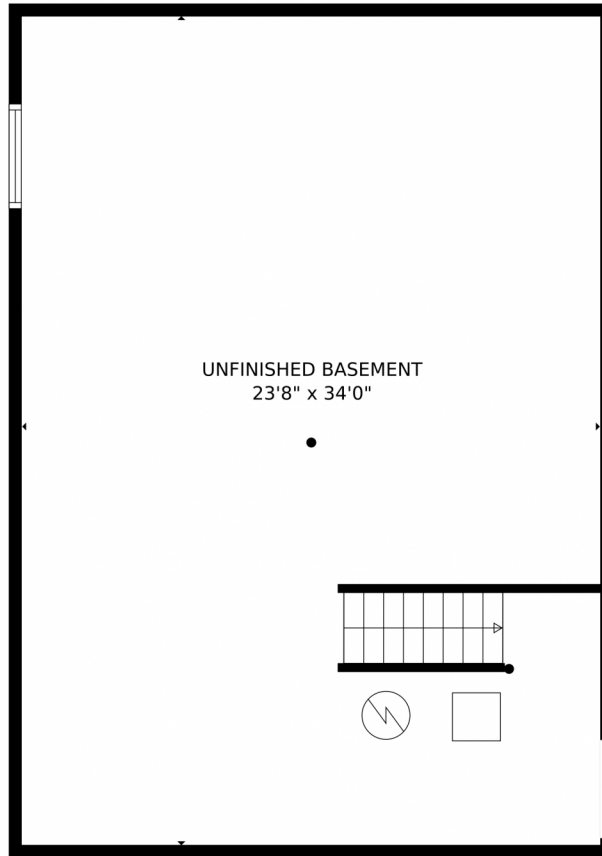


Disclaimer: Sizes and Dimensions are Approximate, Actual May Vary.



**Kyle Doerfler**  
605-377-3219  
kdoerfler@windermere.com





GROSS INTERNAL AREA  
Below Ground: 0 sq. ft, FLOOR 2: 1176 sq. ft  
EXCLUDED AREAS: UNFINISHED BASEMENT: 808 sq. ft, PORCH: 77 sq. ft, BALCONY: 76 sq. ft,  
GARAGE: 377 sq. ft, FIREPLACE: 9 sq. ft  
TOTAL: 1176 sq. ft  
MEASUREMENTS CALCULATED BY V1Photos.com ARE DEEMED HIGHLY RELIABLE BUT NOT GUARANTEED.



Disclaimer: Sizes and Dimensions are Approximate, Actual May Vary.

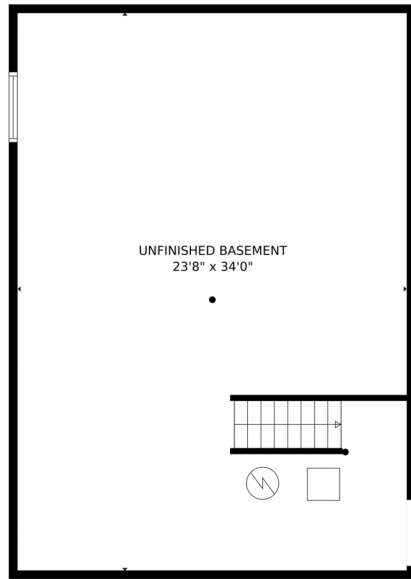


Kyle Doerfler  
605-377-3219  
kdoerfler@windermere.com

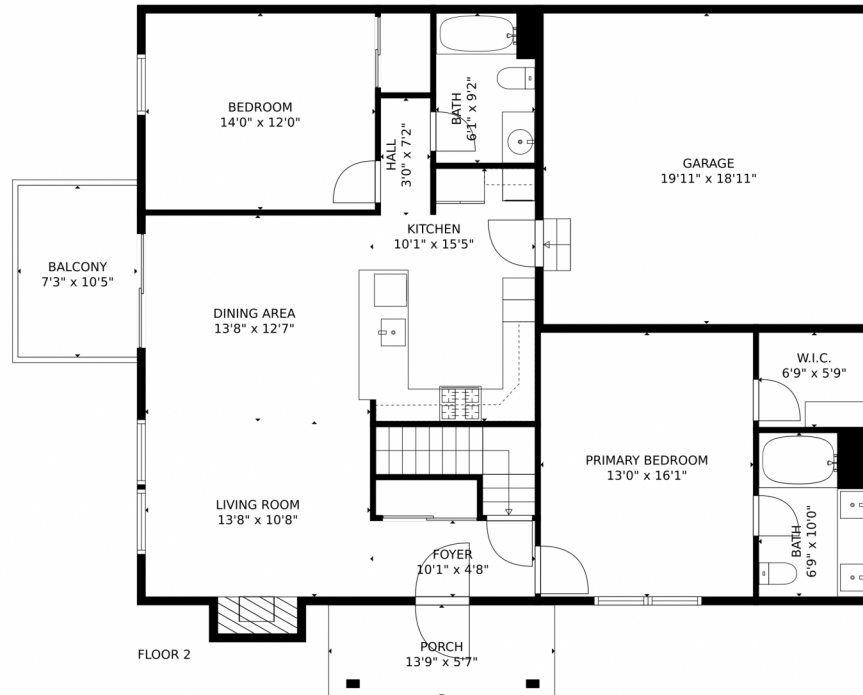




# 2226 Copper Creek Drive, Fort Collins, CO 80528 – All Levels



FLOOR 1



FLOOR 2

GROSS INTERNAL AREA  
Below Ground: 0 sq. ft, FLOOR 2: 1176 sq. ft  
EXCLUDED AREAS: UNFINISHED BASEMENT: 808 sq. ft, PORCH: 77 sq. ft, BALCONY: 76 sq. ft,  
GARAGE: 377 sq. ft, FIREPLACE: 9 sq. ft  
TOTAL: 1176 sq. ft  
MEASUREMENTS CALCULATED BY V1Photos.COM ARE DEEMED HIGHLY RELIABLE BUT NOT GUARANTEED.



Disclaimer: Sizes and Dimensions are Approximate, Actual May Vary.



Kyle Doerfler  
605-377-3219  
kdoerfler@windermere.com

