





 Single Family

 2132 SQFT

 5 Beds

 2 Baths

 1 Car

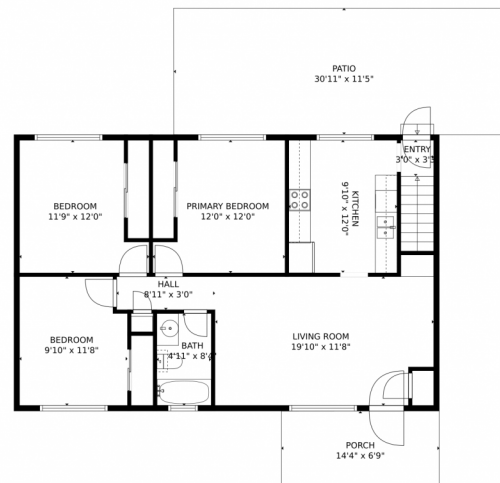
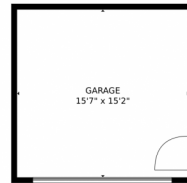
 0.15 Acre



Julio Quezada
720-882-3970
julio@thepristineproperties.com



9330 Grove Street, Westminster, CO 80031 – Main Level



GROSS INTERNAL AREA
Below Ground: 751 sq. ft. FLOOR 2: 904 sq. ft.
EXCLUDED AREAS: UTILITY: 152 sq. ft. GARAGE: 237 sq. ft. PORCH: 97 sq. ft.
PATIO: 354 sq. ft.
TOTAL: 1655 sq. ft.
MEASUREMENTS CALCULATED BY V1Photos.com ARE DEEMED HIGHLY RELIABLE BUT NOT GUARANTEED.



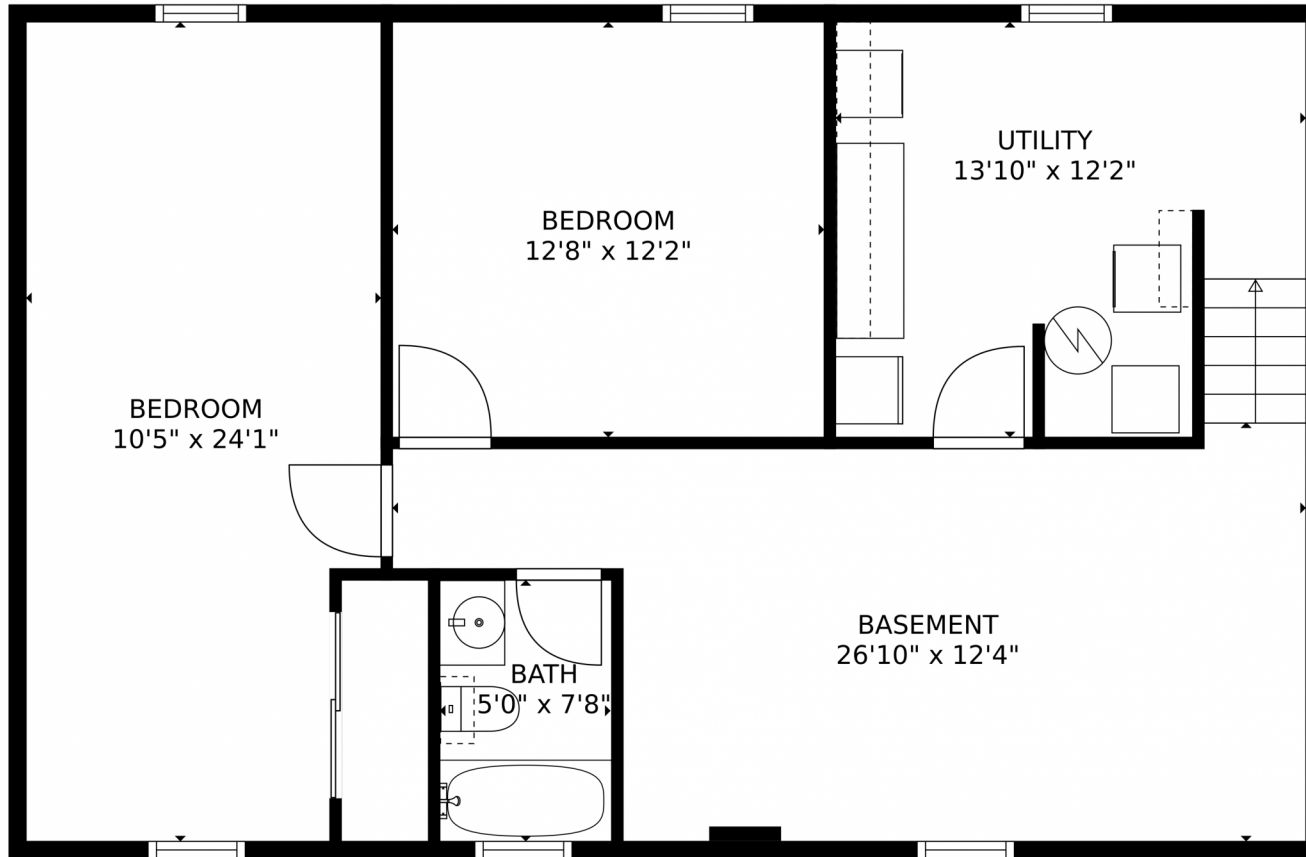
Disclaimer: Sizes and Dimensions are Approximate, Actual May Vary.



Julio Quezada
720-882-3970
julio@thepristineproperties.com



9330 Grove Street, Westminster, CO 80031 — Lower Level



GROSS INTERNAL AREA
Below Ground: 751 sq. ft, FLOOR 2: 904 sq. ft
EXCLUDED AREAS: UTILITY: 152 sq. ft, GARAGE: 237 sq. ft, PORCH: 97 sq. ft,
PATIO: 354 sq. ft
TOTAL: 1655 sq. ft
MEASUREMENTS CALCULATED BY V1Photos.com ARE DEEMED HIGHLY RELIABLE BUT NOT GUARANTEED.

Disclaimer: Sizes and Dimensions are Approximate, Actual May Vary.

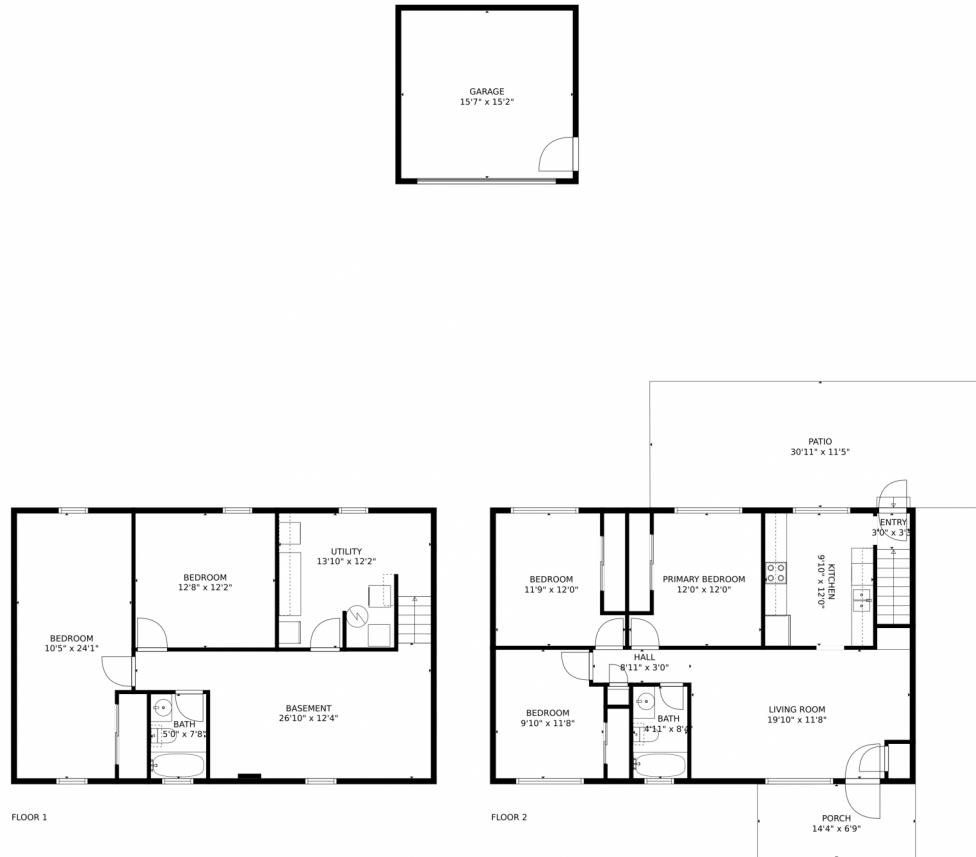


Julio Quezada
720-882-3970
julio@thepristineproperties.com



Scan code
for more
property
details

9330 Grove Street, Westminster, CO 80031 – All Levels



GROSS INTERNAL AREA
Below Ground: 751 sq. ft. FLOOR 2: 904 sq. ft.
EXCLUDED AREAS: UTILITY: 152 sq. ft. GARAGE: 237 sq. ft. PORCH: 97 sq. ft.
PATIO: 354 sq. ft.
TOTAL: 1655 sq. ft.
MEASUREMENTS CALCULATED BY V1Photos.COM ARE DEEMED HIGHLY RELIABLE BUT NOT GUARANTEED.



Disclaimer: Sizes and Dimensions are Approximate, Actual May Vary.



Julio Quezada
720-882-3970
julio@thepristineproperties.com

