




 Single Family

 715 SQFT

 2 Beds

 1 Baths



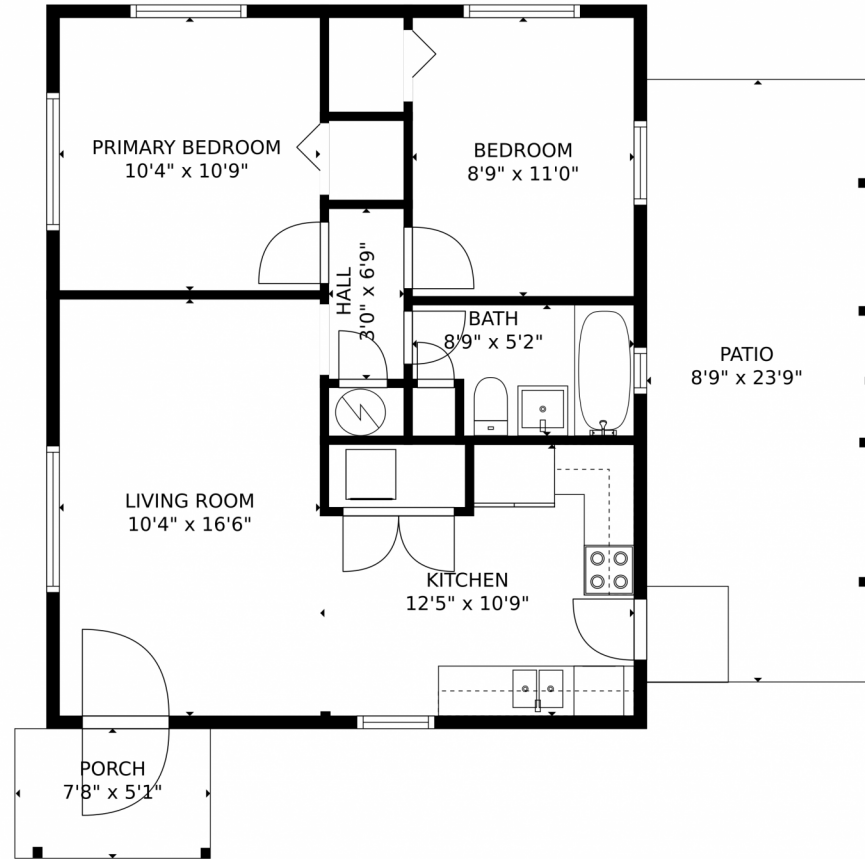
**Taylor Haas**  
303-665-7368  
taylorh@coloradorpm.com  
<https://www.coloradorpm.com/available-rental-properties-denv>



Scan code  
for more  
property  
details



1720 South Yuma Street, Denver, CO 80223 – Main Level



GROSS INTERNAL AREA  
FLOOR 1: 626 sq. ft  
EXCLUDED AREAS: PORCH: 40 sq. ft, PATIO: 209 sq. ft  
TOTAL: 626 sq. ft  
MEASUREMENTS CALCULATED BY V1Photos.com ARE DEEMED HIGHLY RELIABLE BUT NOT GUARANTEED.



Disclaimer: Sizes and Dimensions are Approximate, Actual May Vary.



**Taylor Haas**  
303-665-7368  
taylorh@coloradorpm.com  
<https://www.coloradorpm.com/available-rental-properties-denver>



Scan code  
for more  
property  
details

