




4600 West 17th Street  
 Greeley, CO 80634  
 COMMUNITY: College Green



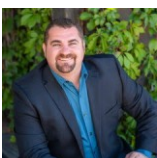
 Single Family

 3468 SQFT

 4 Beds

 4 Baths

 3 Car

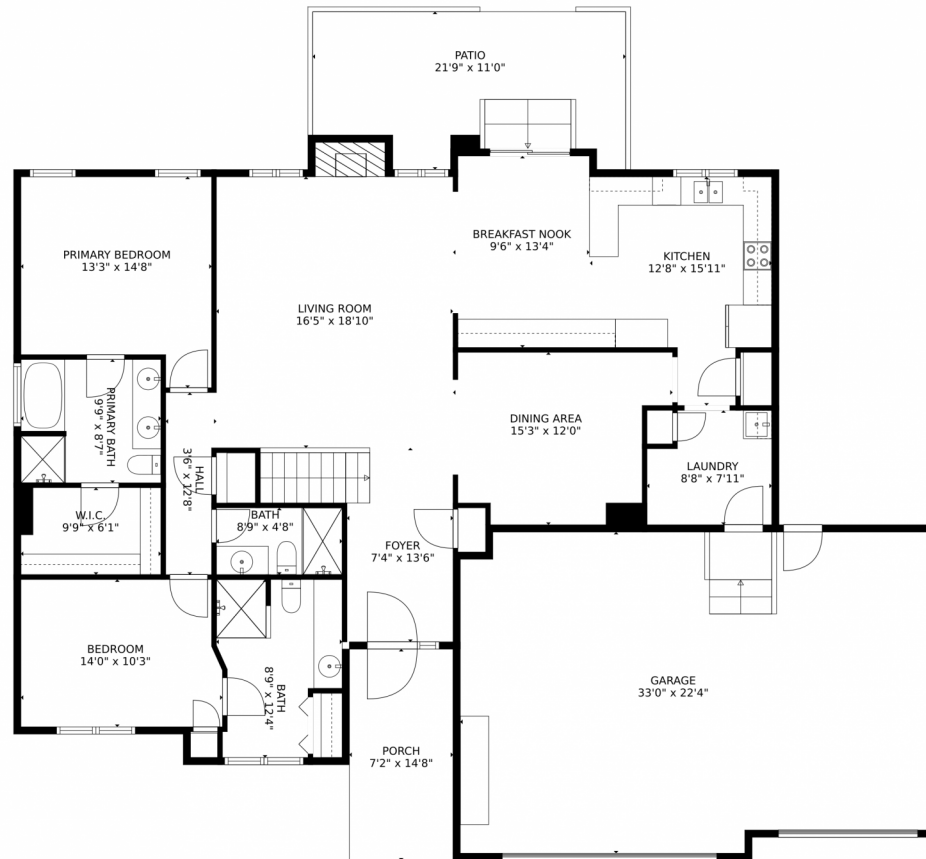


**Brad Inhulsen**  
 970-584-4144  
 brad@searsrealestate.com

Scan code  
 for more  
 property  
 details



# 4600 West 17th Street, Greeley, CO 80634 – Main Floor



GROSS INTERNAL AREA  
Below Ground: 1364 sq. ft. FLOOR 2: 1680 sq. ft.  
EXCLUDED AREAS: STORAGE: 113 sq. ft. ELECTRICAL ROOM: 65 sq. ft. FIREPLACE: 19 sq. ft.  
GARAGE: 711 sq. ft. PATIO: 210 sq. ft. PORCH: 106 sq. ft.  
TOTAL: 3044 sq. ft.  
MEASUREMENTS CALCULATED BY V1Photos.com ARE DEEMED HIGHLY RELIABLE BUT NOT GUARANTEED.



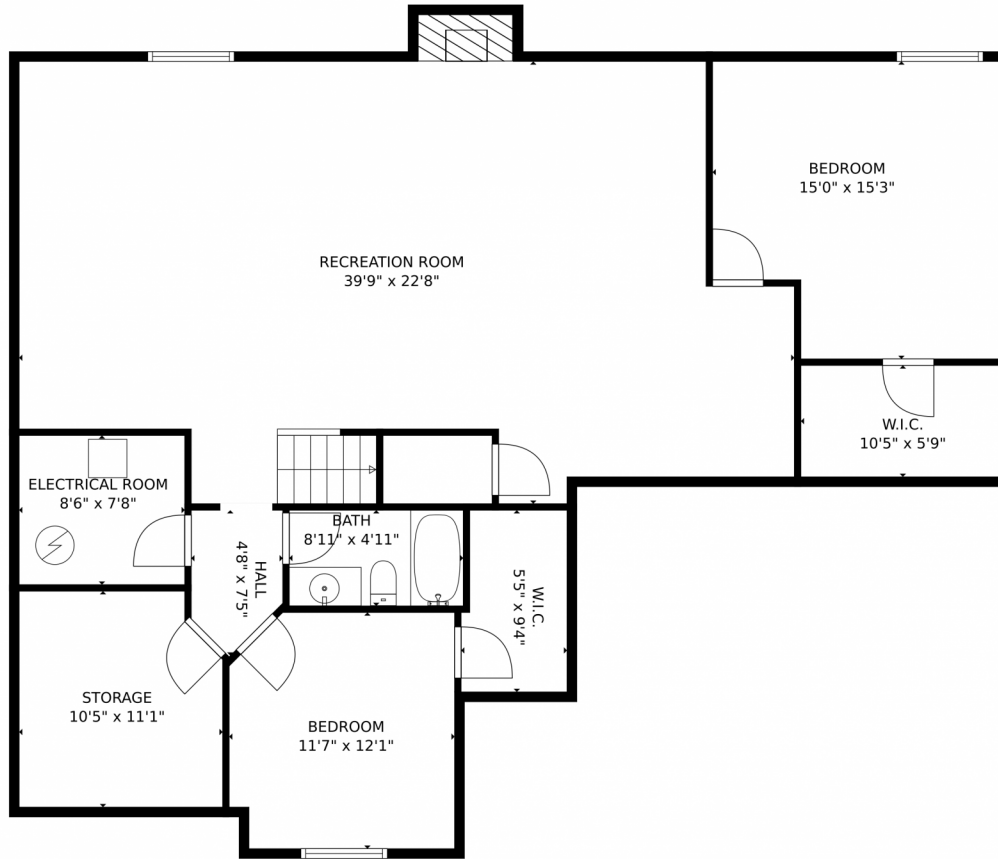
Disclaimer: Sizes and Dimensions are Approximate, Actual May Vary.



**Brad Inhulsen**  
970-584-4144  
brad@searsrealestate.com



4600 West 17th Street, Greeley, CO 80634 – Basement



GROSS INTERNAL AREA  
Below Ground: 1364 sq. ft. FLOOR 2: 1680 sq. ft.  
EXCLUDED AREAS: STORAGE: 113 sq. ft. ELECTRICAL ROOM: 65 sq. ft. FIREPLACE: 19 sq. ft.  
GARAGE: 711 sq. ft. PATIO: 210 sq. ft. PORCH: 106 sq. ft.  
TOTAL: 3044 sq. ft.  
MEASUREMENTS CALCULATED BY V1Photos.com ARE DEEMED HIGHLY RELIABLE BUT NOT GUARANTEED.



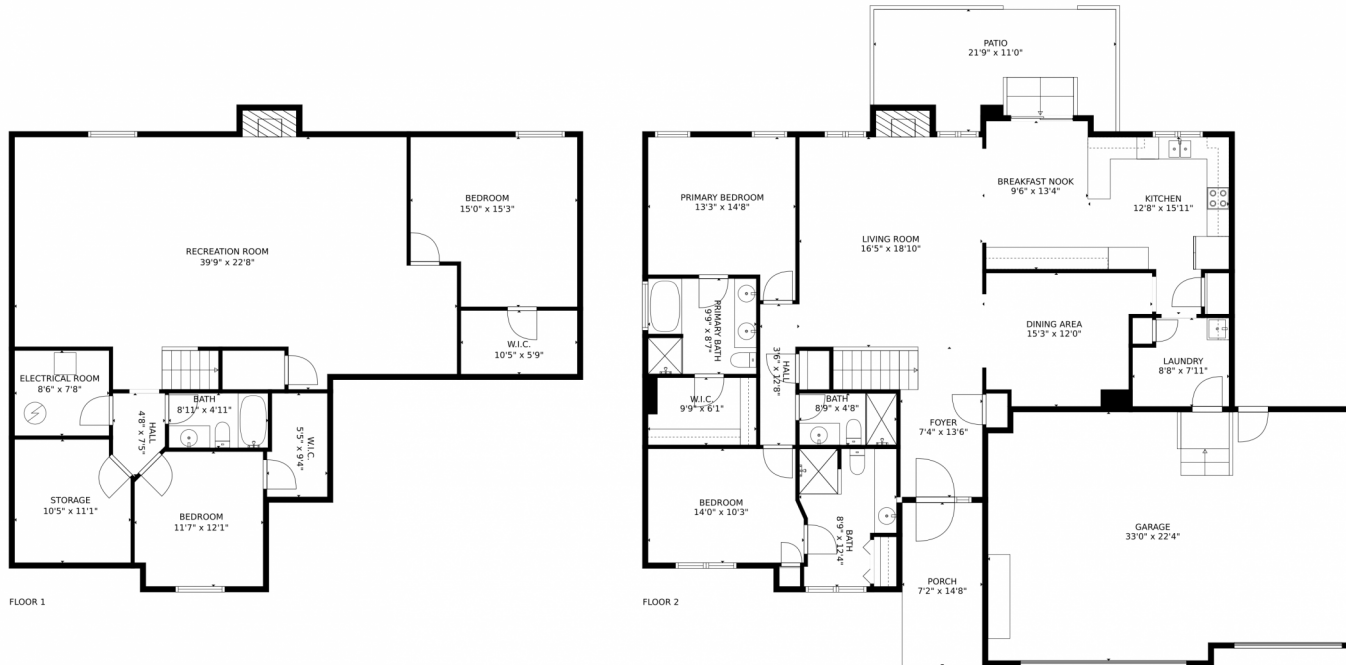
Disclaimer: Sizes and Dimensions are Approximate, Actual May Vary.



**Brad Inhulsen**  
970-584-4144  
brad@searsrealestate.com



# 4600 West 17th Street, Greeley, CO 80634 – All Floors



GROSS INTERNAL AREA  
Below Ground: 1364 sq. ft. FLOOR 2: 1680 sq. ft.  
EXCLUDED AREAS: STORAGE: 113 sq. ft, ELECTRICAL ROOM: 65 sq. ft, FIREPLACE: 19 sq. ft.  
GARAGE: 711 sq. ft, PATIO: 210 sq. ft, PORCH: 106 sq. ft  
TOTAL: 3044 sq. ft  
MEASUREMENTS CALCULATED BY V1Photos.COM ARE DEEMED HIGHLY RELIABLE BUT NOT GUARANTEED.



Disclaimer: Sizes and Dimensions are Approximate, Actual May Vary.



**Brad Inhulsen**  
970-584-4144  
brad@searsrealestate.com



Scan code  
for more  
property  
details

