



9230 SE Riverfront Terrace Unit F
 Tequesta, FL 33469
 COMMUNITY: Riverbend

FANTASTIC RIVER VIEWS



Condominium



1230 SQFT



2 Beds



2/1 Baths

PROPERTY DETAILS

Premium Loxahatchee River Views with this popular townhome model located in the desirable community of Riverbend Country Club. This spacious home features open-concept living, a pass-thru kitchen with new SS GE LG Appliances in 2020, breakfast bar, and a large dining/living space while its private end-unit windows give plenty of light all day. New Energy Efficient AC with UV light (2023). Watch the boats, tropical birds, and magnificent sunsets from the comfort of your living room and two large covered balconies. The Townhouse is Perfectly placed steps to the pool, dock, Kayak Storage, Courts, and the Fazio 18-hole golf course. Condo fees cover, 24 hr Manned Gate, Cable TV, Internet, Water, Sewer, Trash Removal, Exterior maintenance, Bldg Insurance, 3 Har-Tru Tennis Courts, 4 Pickleball, Heated Swimming Pools and Clubhouse. Zero equity/initiation fee. Riverbend sits on nearly 100 acres of beautiful, manicured grounds with Martin County Taxes and close to Amazing Restaurants, Shopping and PBI Airport.



Chris Dyer

301-343-9279

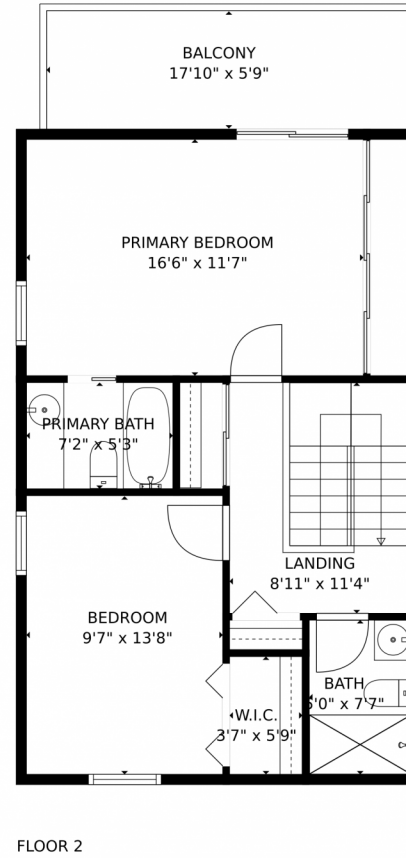
chris@ebstonerealty.com

<https://www.EbStoneRealty.com>

Scan code
for more
property
details



9230 SE Riverfront Terrace Unit F, Tequesta, FL 33469 – All Floors



GROSS INTERNAL AREA
FLOOR 1: 549 sq. ft, FLOOR 2: 587 sq. ft
EXCLUDED AREAS: BALCONY: 195 sq. ft, STORAGE: 47 sq. ft
TOTAL: 1136 sq. ft
MEASUREMENTS CALCULATED BY V1Photos.COM ARE DEEMED HIGHLY RELIABLE BUT NOT GUARANTEED.



Disclaimer: Sizes and Dimensions are Approximate, Actual May Vary.



Chris Dyer
301-343-9279
chris@ebstonerealty.com
<https://www.EbStoneRealty.com>

