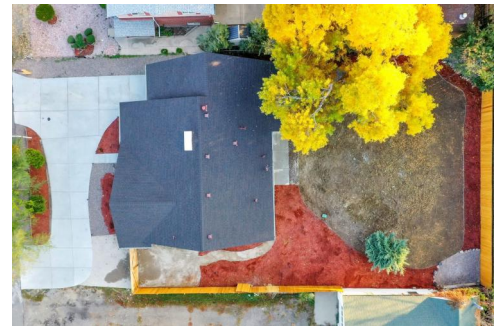




3661 Miller Street
 Wheat Ridge, CO 80033
 COMMUNITY: Applewood Village

MLS # 6695416
 PRICE \$915,000



Single Family 3086 SQFT 5 Beds 4 Baths 1 Car 0.24 Acre

PROPERTY DETAILS

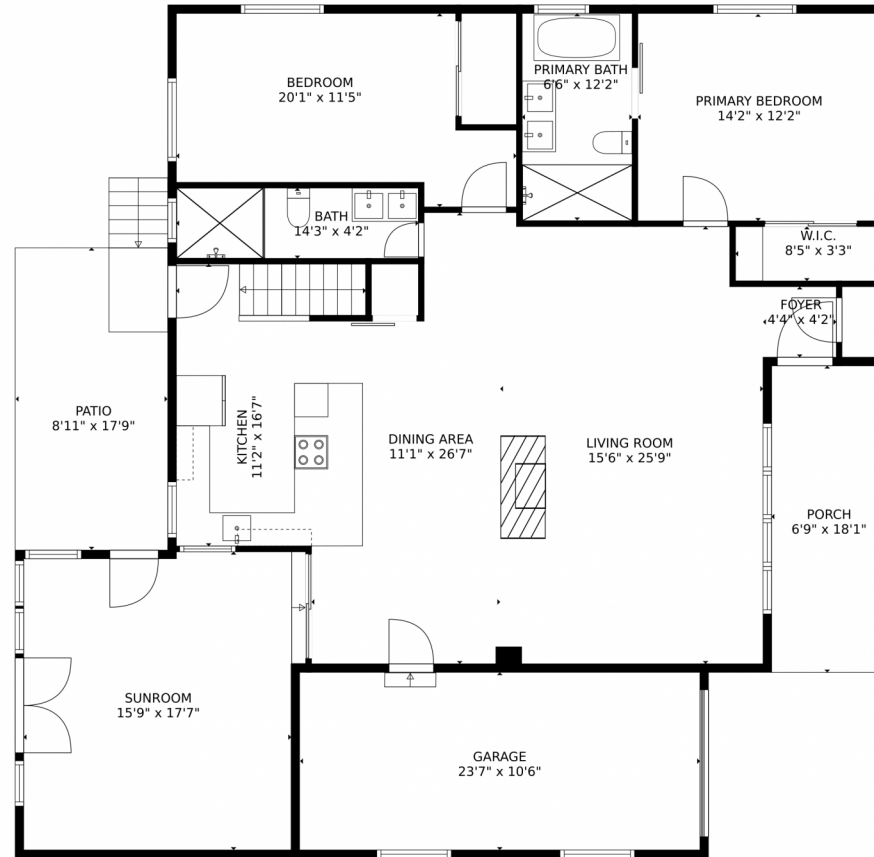
Remodeled home in Wheat Ridge with beautiful finishes. Spacious, bright, open floor plan. New kitchen with quartz countertops, large island, gray cabinets, and stainless steel appliances. Two bedrooms and two bathrooms on main level. Dining room, living room, and sunroom merge seamlessly. Basement has three bedrooms, two bathrooms, and family room. Updates include new HVAC, sprinkler system, renovated baths, paint, floors, plumbing, lighting, electric panel, doors, windows, concrete work, fence, appliances, roof, and gutters. Close to recreation center and shopping. Must see!



Magali Fredrick
 303-810-6761
 magali.fredrick@gmail.com



3661 Miller Street, Wheat Ridge, CO 80033 – Main Level



GROSS INTERNAL AREA
Below Ground: 1230 sq. ft. FLOOR 2: 1692 sq. ft.
EXCLUDED AREAS: ELECTRICAL ROOM: 82 sq. ft. UNDEFINED: 23 sq. ft. GARAGE: 247 sq. ft.
PORCH: 123 sq. ft. PATIO: 160 sq. ft.
TOTAL: 2922 sq. ft.
MEASUREMENTS CALCULATED BY V1Photos.COM ARE DEEMED HIGHLY RELIABLE BUT NOT GUARANTEED.



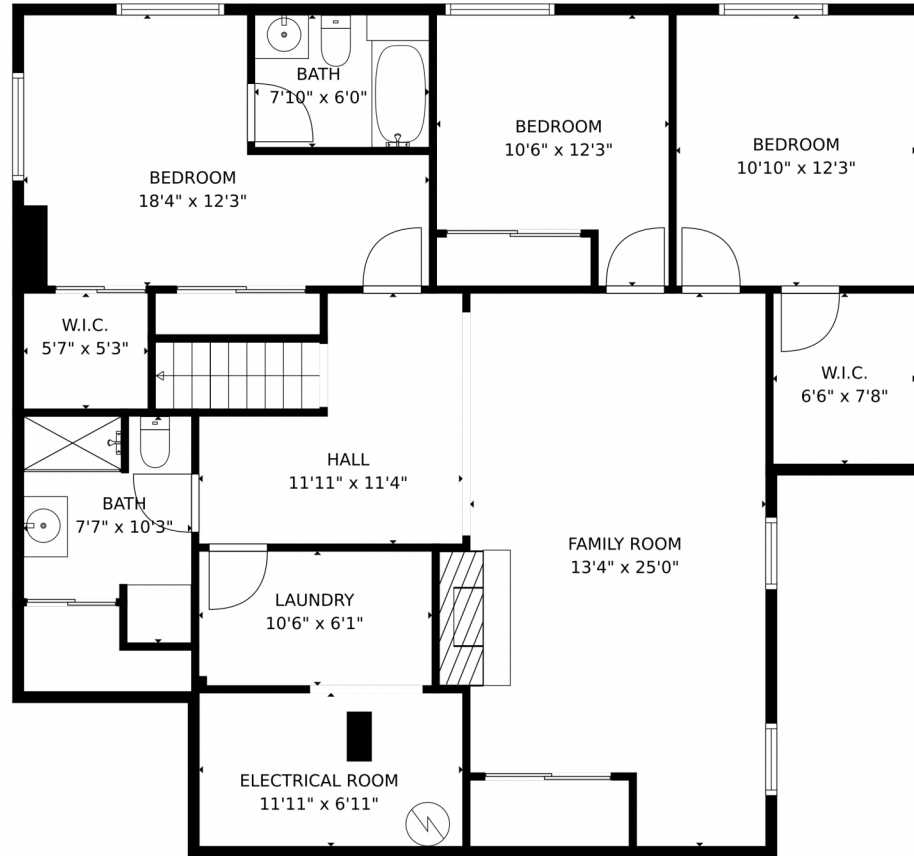
Disclaimer: Sizes and Dimensions are Approximate, Actual May Vary.



Magali Fredrick
303-810-6761
magali.fredrick@gmail.com



3661 Miller Street, Wheat Ridge, CO 80033 – Lower Level



GROSS INTERNAL AREA
Below Ground: 1230 sq. ft. FLOOR 2: 1692 sq. ft.
EXCLUDED AREAS: ELECTRICAL ROOM: 82 sq. ft. UNDEFINED: 23 sq. ft. GARAGE: 247 sq. ft.
PORCH: 123 sq. ft. PATIO: 160 sq. ft.
TOTAL: 2922 sq. ft.
MEASUREMENTS CALCULATED BY V1Photos.COM ARE DEEMED HIGHLY RELIABLE BUT NOT GUARANTEED.



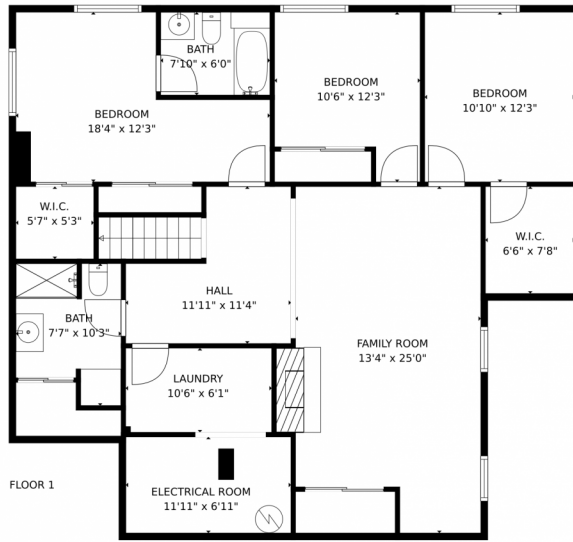
Disclaimer: Sizes and Dimensions are Approximate, Actual May Vary.



Magali Fredrick
303-810-6761
magali.fredrick@gmail.com



3661 Miller Street, Wheat Ridge, CO 80033 – All Levels



GROSS INTERNAL AREA
Below Ground: 1230 sq. ft, FLOOR 2: 1692 sq. ft
EXCLUDED AREAS: ELECTRICAL ROOM: 82 sq. ft, UNDEFINED: 23 sq. ft, GARAGE: 247 sq. ft,
PORCH: 123 sq. ft, PATIO: 160 sq. ft
TOTAL: 2922 sq. ft
MEASUREMENTS CALCULATED BY V1Photos.COM ARE DEEMED HIGHLY RELIABLE BUT NOT GUARANTEED.



Disclaimer: Sizes and Dimensions are Approximate, Actual May Vary.



Magali Fredrick
303-810-6761
magali.fredrick@gmail.com



Scan code
for more
property
details

