



12761 Crane River Drive
Longmont, CO 80504



12761 Crane River Drive, Longmont, CO 80504 - Main Level



Single Family 2762 SQFT

PROPERTY DETAILS

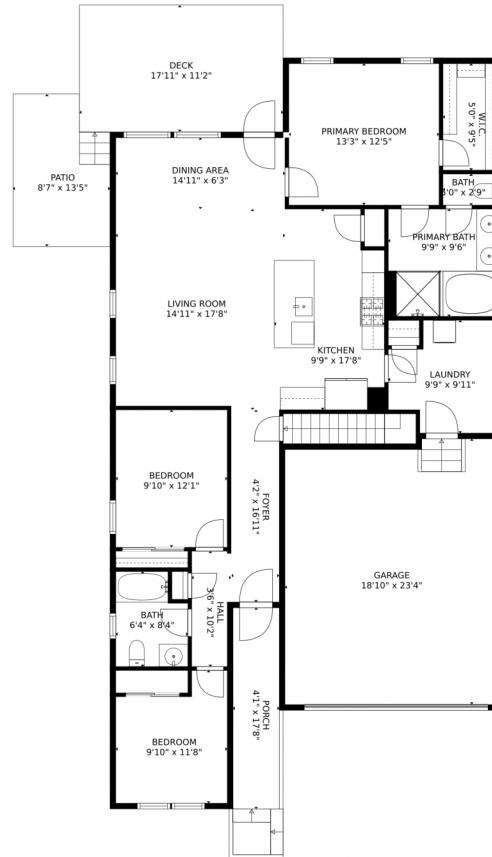
Presenting a remarkable single-family property located at 12761 Crane River Drive in Longmont, CO. This spacious home offers 2762 sqft of living area, making it ideal for families. The front facade showcases a garage and a front yard, creating an inviting exterior. Inside, the corridor features elegant dark wood-type flooring. The kitchen is a standout feature, boasting dark hardwood floors, a breakfast bar, and double ovens. The bedrooms are spacious and well-appointed, with hardwood flooring and natural light. Outdoor living is delightful with a deck and patio area. Community amenities include basketball and tennis courts, and an outdoor pool. Contact us today to schedule a showing and discover the possibilities this home offers.



Julie-Ann Markiewicz
303-995-3914
julieann401back@comcast.net



12761 Crane River Drive, Longmont, CO 80504 – Main Level



GROSS INTERNAL AREA
Below Ground: 0 sq. ft, FLOOR 2: 1398 sq. ft
EXCLUDED AREAS: UNFINISHED BASEMENT: 1284 sq. ft, GARAGE: 430 sq. ft, PORCH: 72 sq. ft,
DECK: 201 sq. ft, PATIO: 106 sq. ft
TOTAL: 1398 sq. ft
MEASUREMENTS CALCULATED BY V1Photos.com ARE DEEMED HIGHLY RELIABLE BUT NOT GUARANTEED.



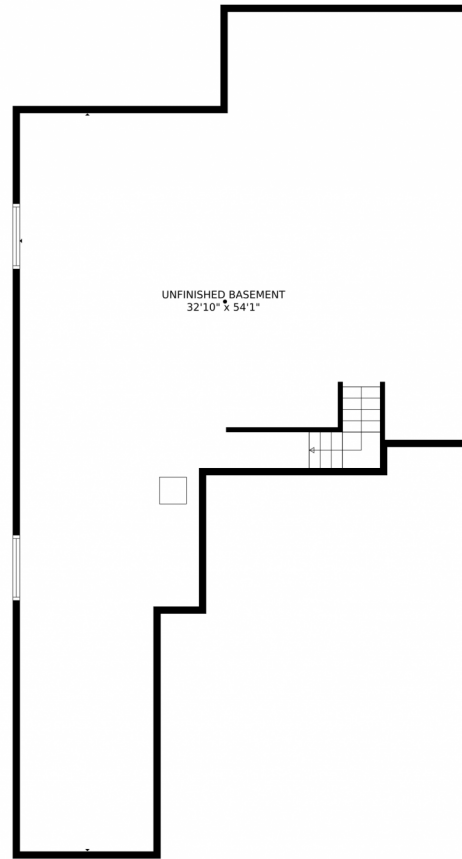
Disclaimer: Sizes and Dimensions are Approximate, Actual May Vary.



Julie-Ann Markiewicz
303-995-3914
julieann401back@comcast.net



12761 Crane River Drive, Longmont, CO 80504 – Lower Level



GROSS INTERNAL AREA
Below Ground: 0 sq. ft, FLOOR 2: 1398 sq. ft
EXCLUDED AREAS: UNFINISHED BASEMENT: 1284 sq. ft, GARAGE: 430 sq. ft, PORCH: 72 sq. ft,
DECK: 201 sq. ft, PATIO: 106 sq. ft
TOTAL: 1398 sq. ft
MEASUREMENTS CALCULATED BY V1Photos.COM ARE DEEMED HIGHLY RELIABLE BUT NOT GUARANTEED.



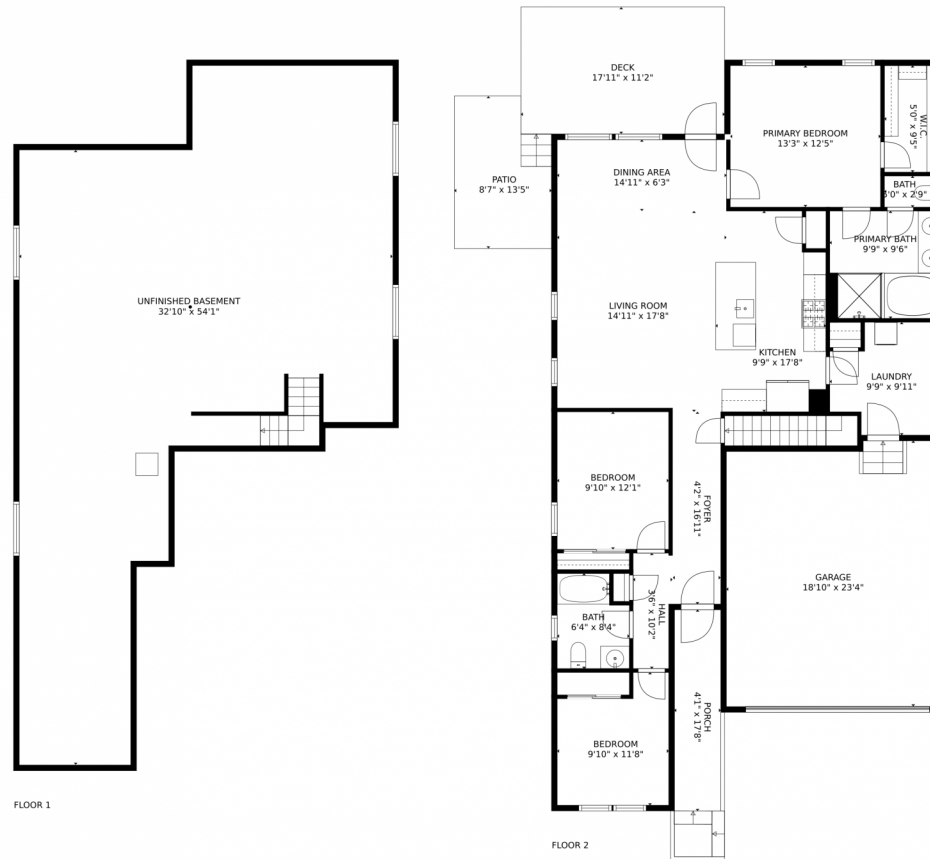
Disclaimer: Sizes and Dimensions are Approximate, Actual May Vary.



Julie-Ann Markiewicz
303-995-3914
julieann401back@comcast.net



12761 Crane River Drive, Longmont, CO 80504 – All Levels



GROSS INTERNAL AREA
Below Ground: 0 sq. ft, FLOOR 2: 1398 sq. ft
EXCLUDED AREAS: UNFINISHED BASEMENT: 1284 sq. ft, GARAGE: 430 sq. ft, PORCH: 72 sq. ft,
DECK: 201 sq. ft, PATIO: 106 sq. ft
TOTAL: 1398 sq. ft
MEASUREMENTS CALCULATED BY V1Photos.COM ARE DEEMED HIGHLY RELIABLE BUT NOT GUARANTEED.



Disclaimer: Sizes and Dimensions are Approximate, Actual May Vary.



Julie-Ann Markiewicz
303-995-3914
julieann401back@comcast.net

