



9165 South Benton Court
 Littleton, CO 80128
 COMMUNITY: Leawood Estates

MLS # 9212036
 PRICE \$950



Single Family



3887 SQFT



4 Beds



3/1 Baths



2 Car



0.44 Acre

PROPERTY DETAILS

Welcome to your new home for the Holidays! This charming 1978 ranch-style home is located in the highly sought-after Leawood Estates, nestled on a quiet cul-de-sac. With modern features such as soft close cabinets, LED lights, and energy-efficient windows, this home combines old-world charm with today's conveniences. The open and sunny floorplan is perfect for entertaining, and the spacious rooms allow for socializing with family and guests. The kitchen boasts new cabinets, stainless steel appliances, and Quartz counters. The primary suite offers a private bathroom, walk-in closet, and a covered deck with mountain views. Additionally, this home has a sunny walk-out basement that can be used for multi-generational living, with a kitchenette and ADA-compliant doors. Outside, enjoy the large lot, multiple lounge areas, firepit, and basketball court. Located near downtown Littleton, parks, dining, and shopping. Don't miss out - call today to schedule your showing!



Danielle Marcus

303-669-7974

danielle@themarkusteam.com

<https://www.themarkusteam.com>



Scan code
 for more
 property
 details



9165 South Benton Court, Littleton, CO 80128 – Main Level



GROSS INTERNAL AREA
Below Ground: 998 sq. ft, FLOOR 2: 2481 sq. ft
EXCLUDED AREAS: PATIO: 456 sq. ft, ELECTRICAL ROOM: 167 sq. ft, GARAGE: 434 sq. ft,
DECK: 105 sq. ft, PORCH: 105 sq. ft, FIREPLACE: 8 sq. ft
TOTAL: 3479 sq. ft
MEASUREMENTS CALCULATED BY V1Photos.com ARE DEEMED HIGHLY RELIABLE BUT NOT GUARANTEED.

Disclaimer: Sizes and Dimensions are Approximate, Actual May Vary.



Danielle Marcus

303-669-7974

danielle@themarkusteam.com

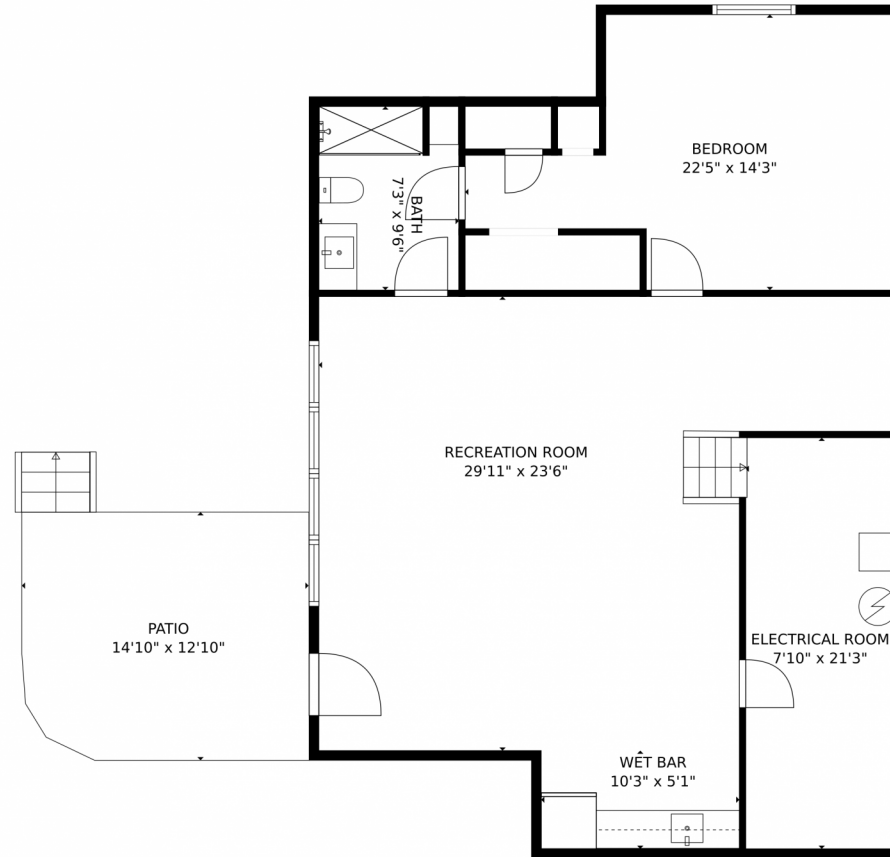
<https://www.themarkusteam.com>



Scan code
for more
property
details



9165 South Benton Court, Littleton, CO 80128 – Lower Level



GROSS INTERNAL AREA
Below Ground: 998 sq. ft, FLOOR 2: 2481 sq. ft
EXCLUDED AREAS: PATIO: 456 sq. ft, ELECTRICAL ROOM: 167 sq. ft, GARAGE: 434 sq. ft,
DECK: 105 sq. ft, PORCH: 105 sq. ft, FIREPLACE: 8 sq. ft
TOTAL: 3479 sq. ft
MEASUREMENTS CALCULATED BY V1Photos.COM ARE DEEMED HIGHLY RELIABLE BUT NOT GUARANTEED.



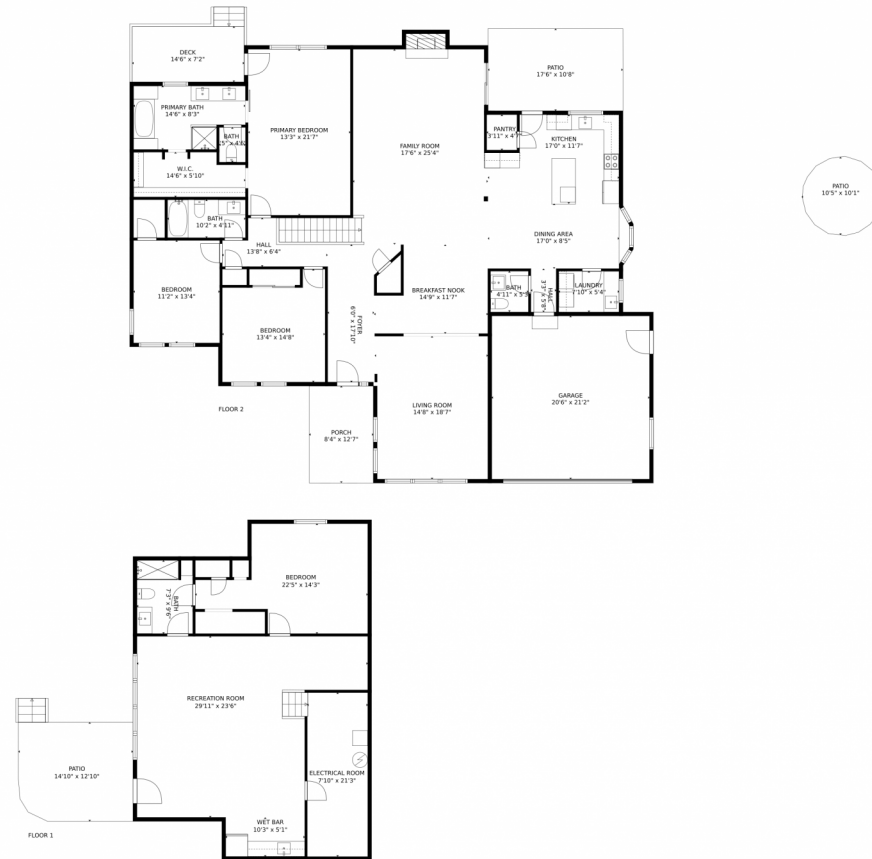
Disclaimer: Sizes and Dimensions are Approximate, Actual May Vary.



Danielle Marcus
303-669-7974
danielle@themarkusteam.com
<https://www.themarkusteam.com>



9165 South Benton Court, Littleton, CO 80128 – All Levels



GROSS INTERNAL AREA
Below Ground: 998 sq. ft, FLOOR 2: 2481 sq. ft
EXCLUDED AREAS: PATIO: 456 sq. ft, ELECTRICAL ROOM: 167 sq. ft, GARAGE: 434 sq. ft,
DECK: 105 sq. ft, PORCH: 105 sq. ft, FIREPLACE: 8 sq. ft
TOTAL: 3479 sq. ft
MEASUREMENTS CALCULATED BY V1Photos.com ARE DEEMED HIGHLY RELIABLE BUT NOT GUARANTEED.



Disclaimer: Sizes and Dimensions are Approximate, Actual May Vary.



Danielle Marcus
303-669-7974
danielle@themarcusteam.com
<https://www.themarcusteam.com>



Scan code
for more
property
details

