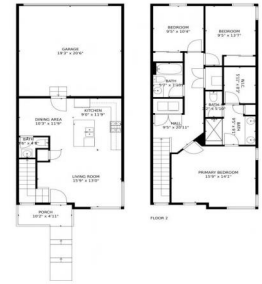





18252 Caffey Drive, Parker, CO 80134 - All Levels



 Single Family

 1386 SQFT

 3 Beds

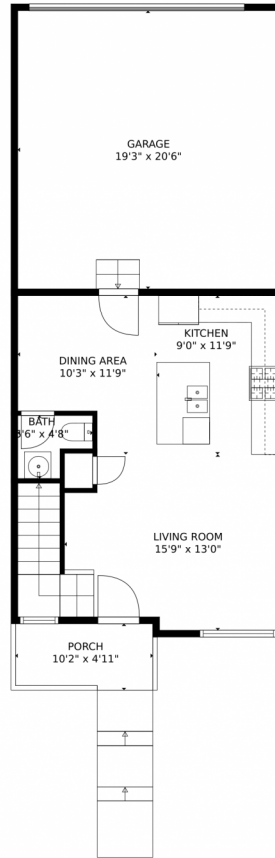
 2/1 Baths



Taylor Haas
 303-665-7368
 taylorh@coloradorpm.com
<https://www.coloradorpm.com/available-rental-properties-denver>



18252 Caffey Drive, Parker, CO 80134 — Main Level



GROSS INTERNAL AREA
FLOOR 1: 465 sq. ft, FLOOR 2: 853 sq. ft
EXCLUDED AREAS: GARAGE: 395 sq. ft, PORCH: 48 sq. ft, UNDEFINED: 16 sq. ft
TOTAL: 1318 sq. ft
MEASUREMENTS CALCULATED BY V1Photos.COM ARE DEEMED HIGHLY RELIABLE BUT NOT GUARANTEED.



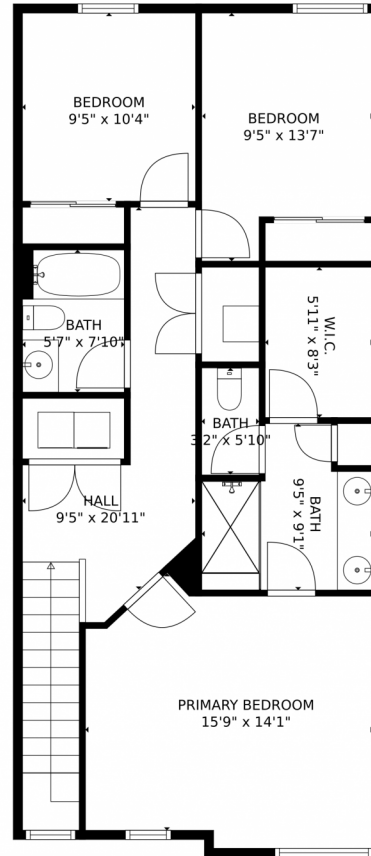
Disclaimer: Sizes and Dimensions are Approximate, Actual May Vary.



Taylor Haas
303-665-7368
taylorh@coloradorpm.com
<https://www.coloradorpm.com/available-rental-properties-denver>



18252 Caffey Drive, Parker, CO 80134 – Upper Level



GROSS INTERNAL AREA
FLOOR 1: 465 sq. ft, FLOOR 2: 853 sq. ft
EXCLUDED AREAS: GARAGE: 395 sq. ft, PORCH: 48 sq. ft, UNDEFINED: 16 sq. ft
TOTAL: 1318 sq. ft
MEASUREMENTS CALCULATED BY V1Photos.com ARE DEEMED HIGHLY RELIABLE BUT NOT GUARANTEED.



Disclaimer: Sizes and Dimensions are Approximate, Actual May Vary.



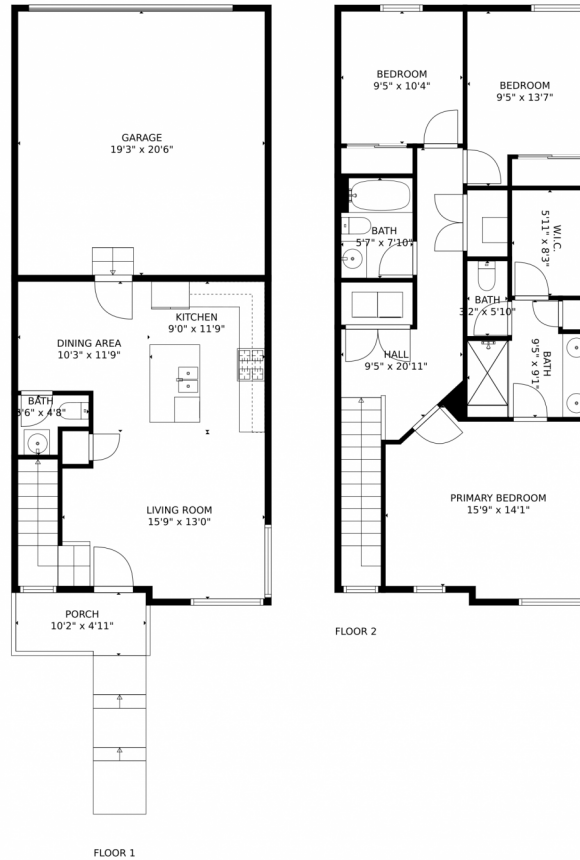
Taylor Haas
303-665-7368
taylorh@coloradorpm.com
<https://www.coloradorpm.com/available-rental-properties-denver>



Scan code
for more
property
details



18252 Caffey Drive, Parker, CO 80134 – All Levels



GROSS INTERNAL AREA
FLOOR 1: 465 sq. ft, FLOOR 2: 853 sq. ft
EXCLUDED AREAS: GARAGE: 395 sq. ft, PORCH: 48 sq. ft, UNDEFINED: 16 sq. ft
TOTAL: 1318 sq. ft
MEASUREMENTS CALCULATED BY V1Photos.com ARE DEEMED HIGHLY RELIABLE BUT NOT GUARANTEED.



Disclaimer: Sizes and Dimensions are Approximate, Actual May Vary.



Taylor Haas
303-665-7368
taylorh@coloradorpm.com
<https://www.coloradorpm.com/available-rental-properties-denver>

