




 Single Family

 2238 SQFT

 4 Beds

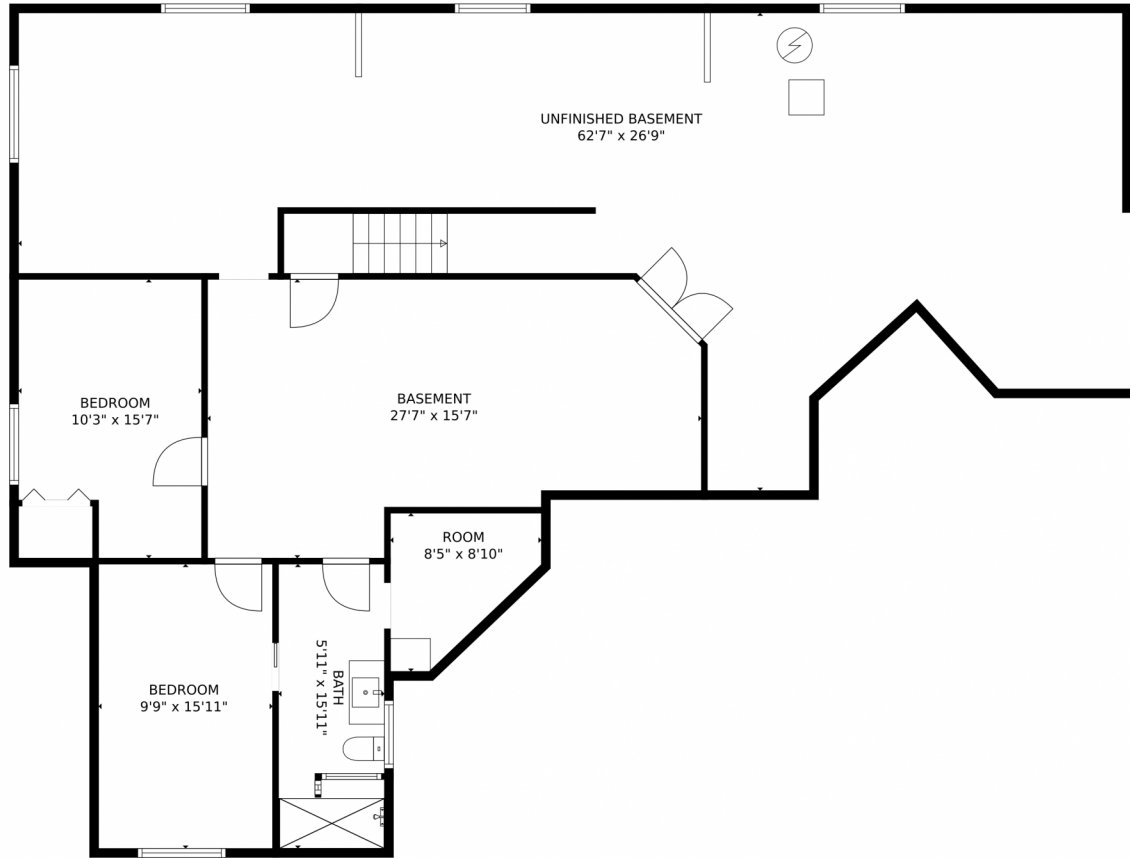
 3 Baths

 2 Car

Eric Hart  
303-818-9951  
eric@homeandlandrealty.net



# 20512 Northern Pine Avenue, Parker, CO 80134 – Lower Level



GROSS INTERNAL AREA  
Below Ground: 867 sq. ft, FLOOR 2: 2174 sq. ft  
EXCLUDED AREAS: UNFINISHED BASEMENT: 1073 sq. ft, PATIO: 405 sq. ft, PORCH: 121 sq. ft,  
GARAGE: 534 sq. ft  
TOTAL: 3041 sq. ft  
MEASUREMENTS CALCULATED BY V1Photos.com ARE DEEMED HIGHLY RELIABLE BUT NOT GUARANTEED.

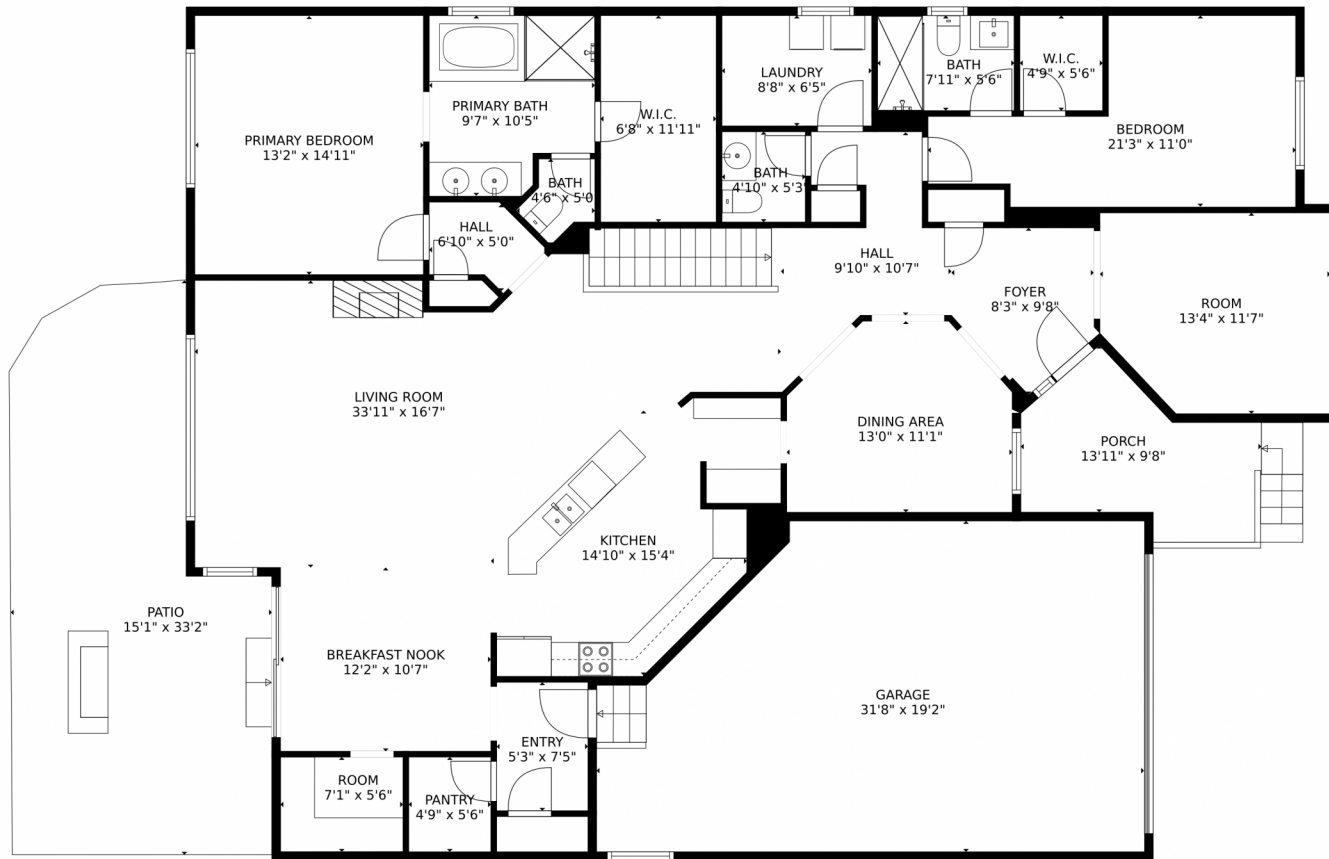


Disclaimer: Sizes and Dimensions are Approximate, Actual May Vary.

Eric Hart  
303-818-9951  
eric@homeandlandrealty.net



# 20512 Northern Pine Avenue, Parker, CO 80134 – Main Level



GROSS INTERNAL AREA  
Below Ground: 867 sq. ft, FLOOR 2: 2174 sq. ft  
EXCLUDED AREAS: UNFINISHED BASEMENT: 1073 sq. ft, PATIO: 405 sq. ft, PORCH: 121 sq. ft,  
GARAGE: 534 sq. ft  
TOTAL: 3041 sq. ft  
MEASUREMENTS CALCULATED BY V1Photos.COM ARE DEEMED HIGHLY RELIABLE BUT NOT GUARANTEED.



Disclaimer: Sizes and Dimensions are Approximate, Actual May Vary.

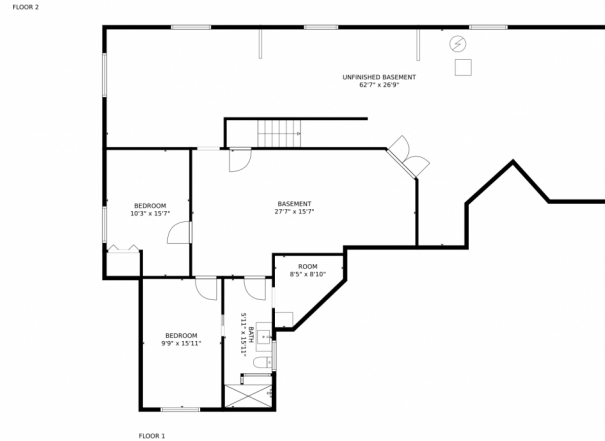
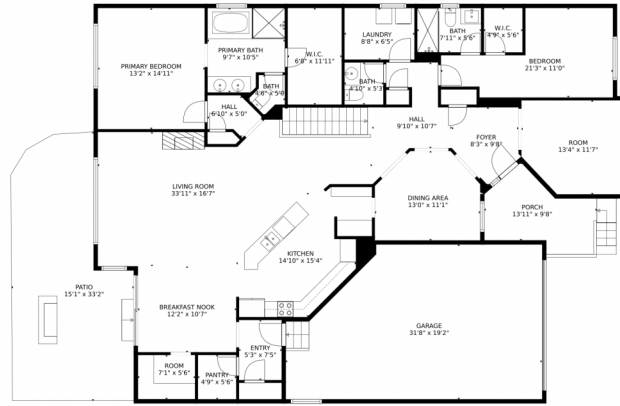
Eric Hart  
303-818-9951  
eric@homeandlandrealty.net



Scan code  
for more  
property  
details



# 20512 Northern Pine Avenue, Parker, CO 80134 – All Levels



GROSS INTERNAL AREA  
Below Ground: 867 sq. ft, FLOOR 2: 2174 sq. ft  
EXCLUDED AREAS: UNFINISHED BASEMENT: 1073 sq. ft, PATIO: 405 sq. ft, PORCH: 121 sq. ft,  
GARAGE: 534 sq. ft  
TOTAL: 3041 sq. ft  
MEASUREMENTS CALCULATED BY V1Photos.com ARE DEEMED HIGHLY RELIABLE BUT NOT GUARANTEED.



Disclaimer: Sizes and Dimensions are Approximate, Actual May Vary.

Eric Hart  
303-818-9951  
eric@homeandlandrealty.net

