



175 Halibut Drive  
 Windsor, CO 80550  
**COMMUNITY:** Water Valley South 15th Fg

**MLS #** IR999345  
**PRICE** \$685,000



Single Family



3548 SQFT



3 Beds



3 Baths



2 Car



0.18 Acre



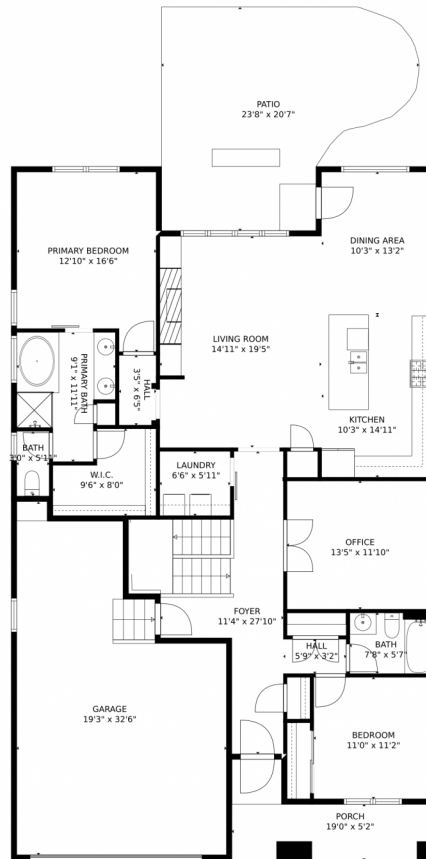
**Rondi DuPont**  
 970-401-0123  
 rdupont@windermere.com



Scan code  
 for more  
 property  
 details



# 175 Halibut Drive, Windsor, CO 80550 – Main Level



GROSS INTERNAL AREA  
Below Ground: 1258 sq. ft, FLOOR 2: 1673 sq. ft  
EXCLUDED AREAS: STORAGE: 347 sq. ft, ELECTRICAL ROOM: 73 sq. ft, PORCH: 117 sq. ft,  
PATIO: 387 sq. ft, GARAGE: 502 sq. ft  
TOTAL: 2931 sq. ft  
MEASUREMENTS CALCULATED BY V1Photos.com ARE DEEMED HIGHLY RELIABLE BUT NOT GUARANTEED.



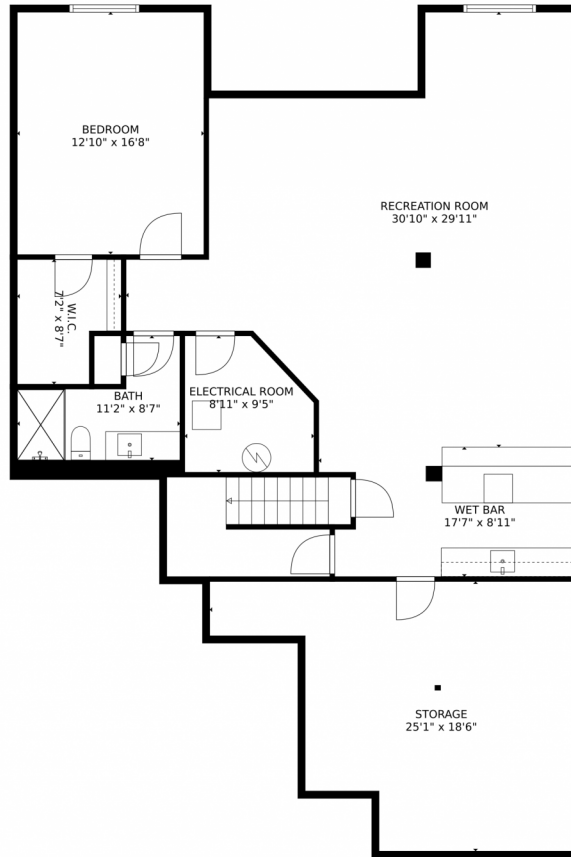
Disclaimer: Sizes and Dimensions are Approximate, Actual May Vary.



Rondi DuPont  
970-401-0123  
rdupont@windermere.com



# 175 Halibut Drive, Windsor, CO 80550 – Lower Level



GROSS INTERNAL AREA  
Below Ground: 1258 sq. ft. FLOOR 2: 1673 sq. ft.  
EXCLUDED AREAS: STORAGE: 347 sq. ft, ELECTRICAL ROOM: 73 sq. ft, PORCH: 117 sq. ft.  
PATIO: 387 sq. ft, GARAGE: 502 sq. ft  
TOTAL: 2931 sq. ft  
MEASUREMENTS CALCULATED BY V1Photos.COM ARE DEEMED HIGHLY RELIABLE BUT NOT GUARANTEED.



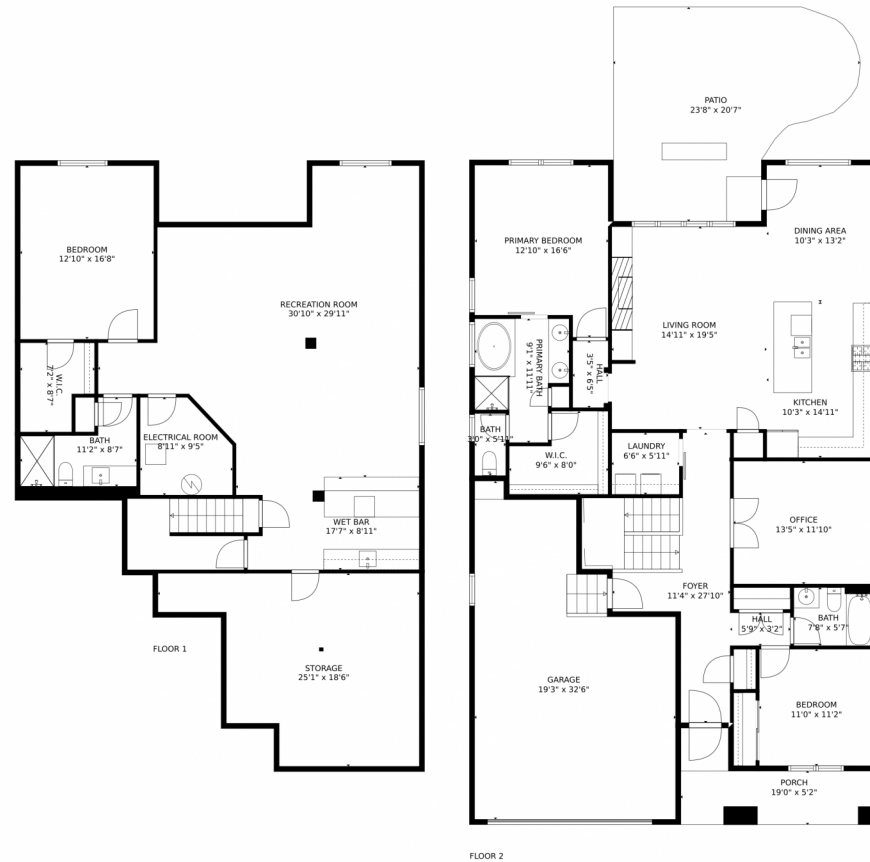
Disclaimer: Sizes and Dimensions are Approximate, Actual May Vary.



Rondi DuPont  
970-401-0123  
rdupont@windermere.com



# 175 Halibut Drive, Windsor, CO 80550 – All Levels



GROSS INTERNAL AREA  
Below Ground: 1258 sq. ft, FLOOR 2: 1673 sq. ft  
EXCLUDED AREAS: STORAGE: 347 sq. ft, ELECTRICAL ROOM: 73 sq. ft, PORCH: 117 sq. ft,  
PATIO: 387 sq. ft, GARAGE: 502 sq. ft  
TOTAL: 2931 sq. ft  
MEASUREMENTS CALCULATED BY V1Photos.com ARE DEEMED HIGHLY RELIABLE BUT NOT GUARANTEED.

Disclaimer: Sizes and Dimensions are Approximate, Actual May Vary.



Rondi DuPont  
970-401-0123  
rdupont@windermere.com

