



Single Family



4785 SQFT



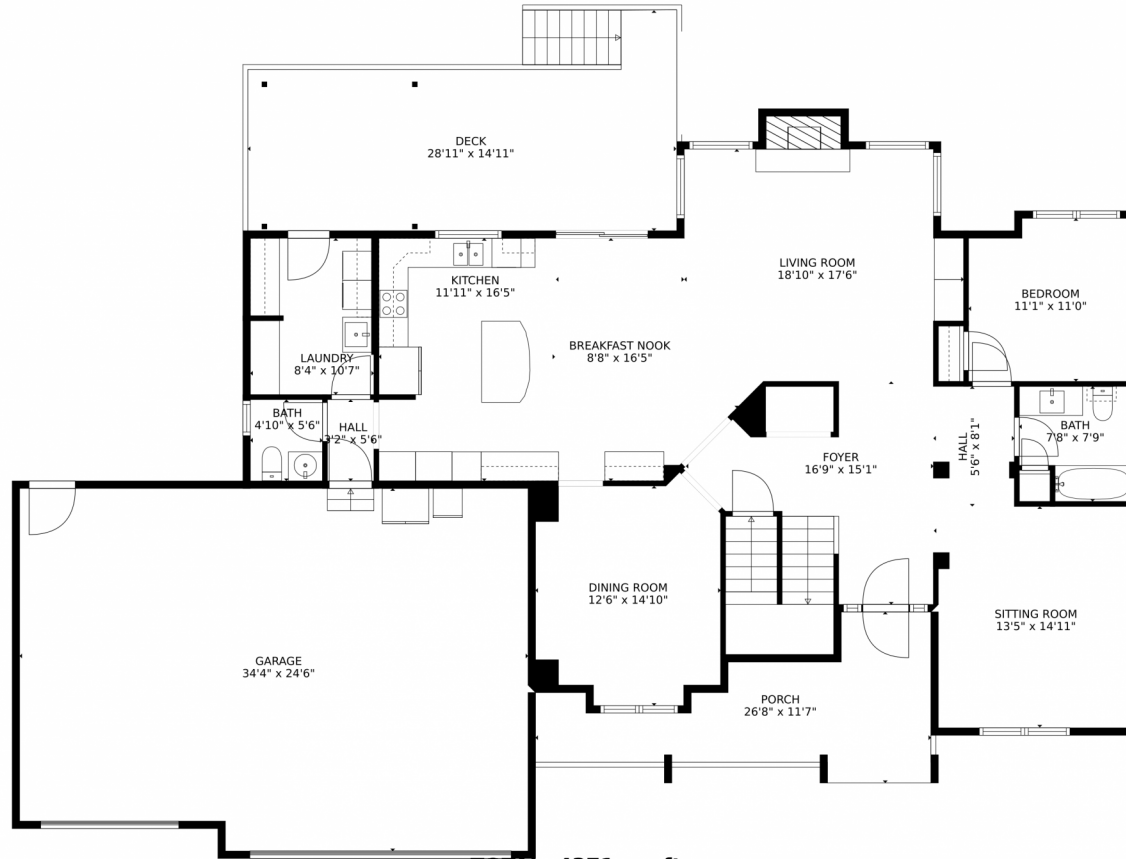
**Katie Robinson**  
970-430-9630  
katierobinson@windermere.com



Scan code  
for more  
property  
details



# 8015 North Loudon Crossing Court, Windsor, CO 80528 – Main Level



**TOTAL: 4371 sq. ft**

Below Ground: 1378 sq. ft, FLOOR 2: 1639 sq. ft, FLOOR 3: 1354 sq. ft  
EXCLUDED AREAS: COVERED PATIO: 107 sq. ft, PATIO: 142 sq. ft, ROOM: 54 sq. ft,  
ELECTRICAL ROOM: 100 sq. ft, PORCH: 174 sq. ft, DECK: 331 sq. ft,  
GARAGE: 813 sq. ft, FIREPLACE: 9 sq. ft, OPEN TO BELOW: 333 sq. ft,  
LOW CEILING: 29 sq. ft

MEASUREMENTS CALCULATED BY V1Photos.COM ARE DEEMED HIGHLY RELIABLE BUT NOT GUARANTEED.



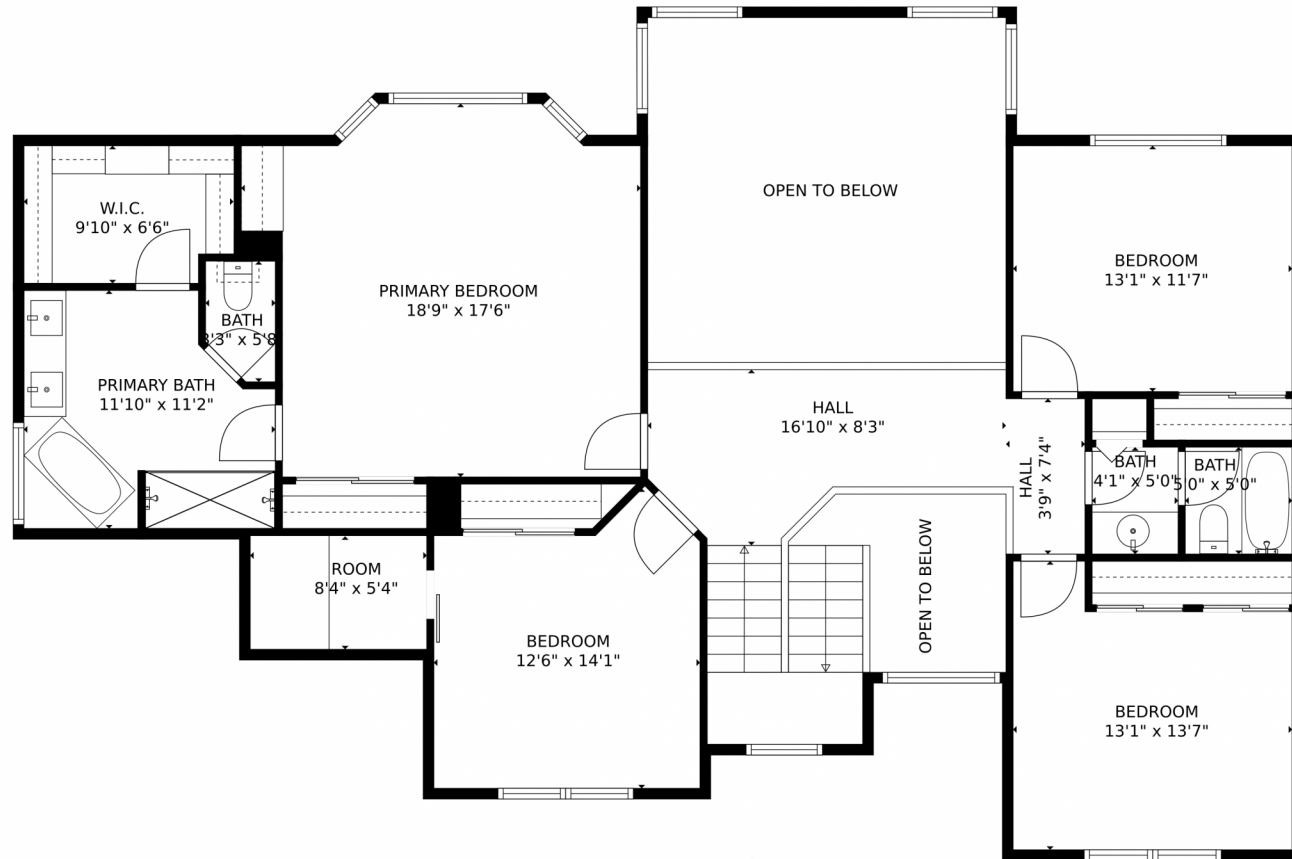
Disclaimer: Sizes and Dimensions are Approximate, Actual May Vary.



**Katie Robinson**  
970-430-9630  
katierobinson@windermere.com



# 8015 North Loudon Crossing Court, Windsor, CO 80528 – Upper Level



**TOTAL: 4371 sq. ft**

Below Ground: 1378 sq. ft, FLOOR 2: 1639 sq. ft, FLOOR 3: 1354 sq. ft  
EXCLUDED AREAS: COVERED PATIO: 107 sq. ft, PATIO: 142 sq. ft, ROOM: 54 sq. ft,  
ELECTRICAL ROOM: 100 sq. ft, PORCH: 174 sq. ft, DECK: 331 sq. ft,  
GARAGE: 813 sq. ft, FIREPLACE: 9 sq. ft, OPEN TO BELOW: 333 sq. ft,  
LOW CEILING: 29 sq. ft

MEASUREMENTS CALCULATED BY V1Photos.COM ARE DEEMED HIGHLY RELIABLE BUT NOT GUARANTEED.



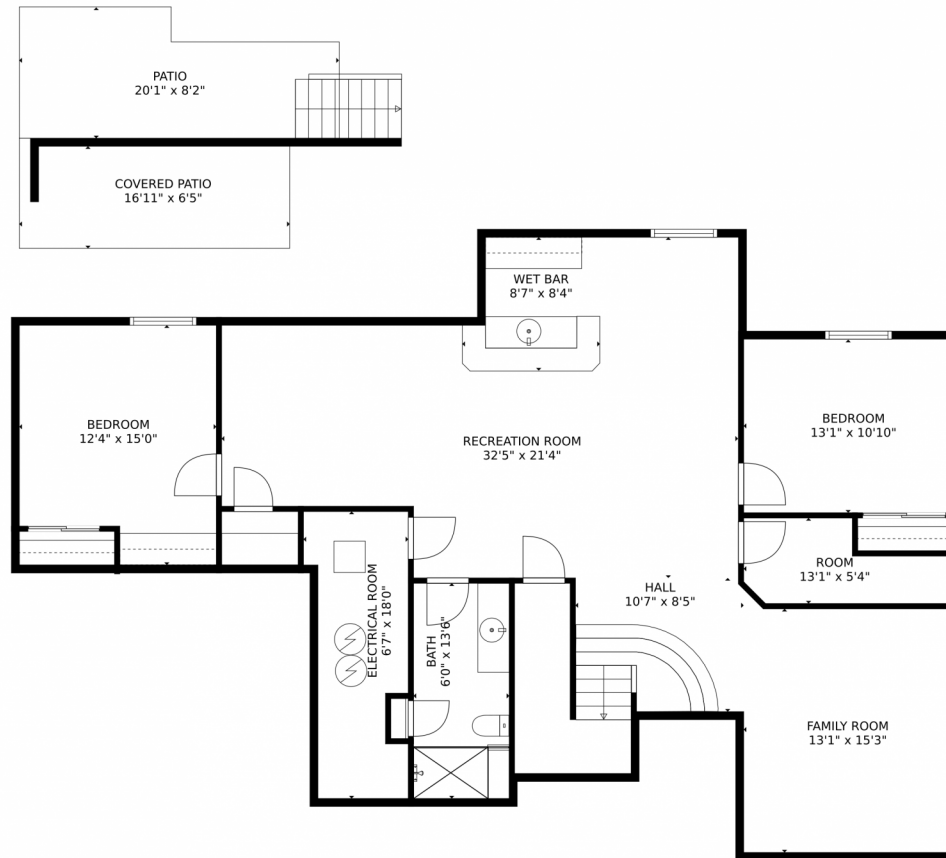
Disclaimer: Sizes and Dimensions are Approximate, Actual May Vary.



**Katie Robinson**  
970-430-9630  
katierobinson@windermere.com



# 8015 North Loudon Crossing Court, Windsor, CO 80528 – Lower Level



**TOTAL: 4371 sq. ft**

Below Ground: 1378 sq. ft, FLOOR 2: 1639 sq. ft, FLOOR 3: 1354 sq. ft

EXCLUDED AREAS: COVERED PATIO: 107 sq. ft, PATIO: 142 sq. ft, ROOM: 54 sq. ft,

ELECTRICAL ROOM: 100 sq. ft, PORCH: 174 sq. ft, DECK: 331 sq. ft,

GARAGE: 813 sq. ft, FIREPLACE: 9 sq. ft, OPEN TO BELOW: 333 sq. ft,

LOW CEILING: 29 sq. ft

MEASUREMENTS CALCULATED BY V1Photos.COM ARE DEEMED HIGHLY RELIABLE BUT NOT GUARANTEED.



Disclaimer: Sizes and Dimensions are Approximate, Actual May Vary.



**Katie Robinson**

970-430-9630

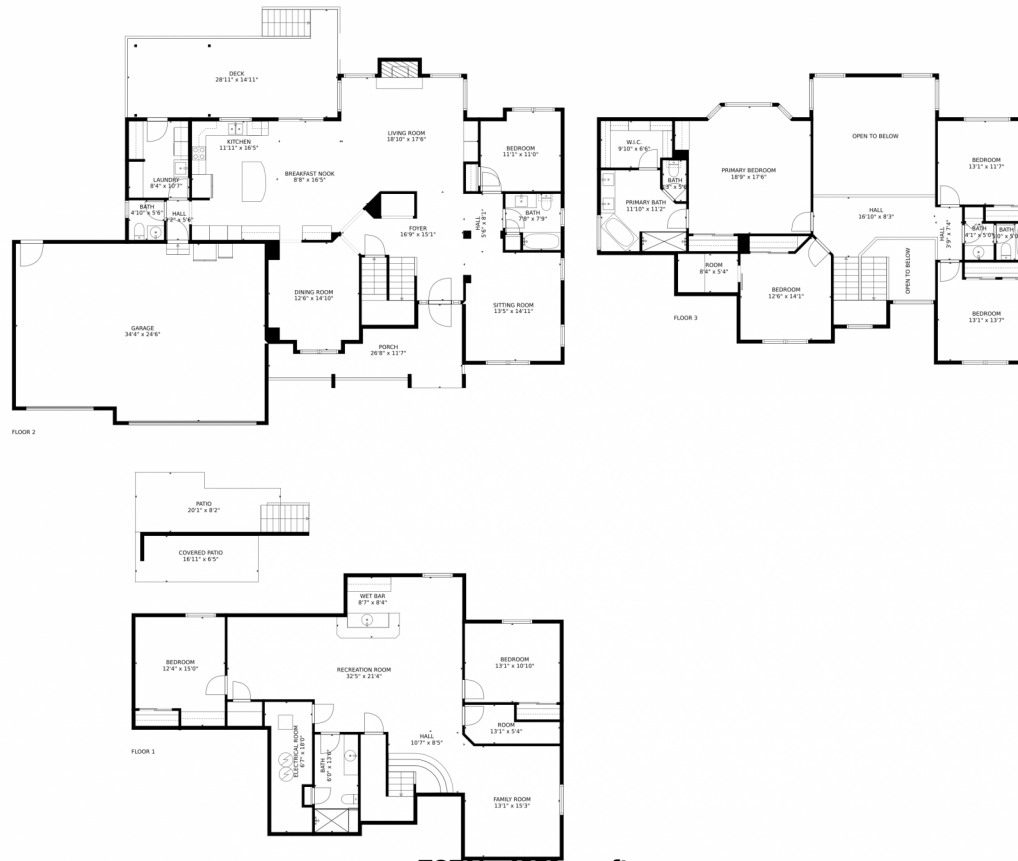
[katierobinson@windermere.com](mailto:katierobinson@windermere.com)



Scan code  
for more  
property  
details



# 8015 North Loudon Crossing Court, Windsor, CO 80528 – All Levels



**TOTAL: 4371 sq. ft**

Below Ground: 1378 sq. ft, FLOOR 2: 1639 sq. ft, FLOOR 3: 1354 sq. ft  
 EXCLUDED AREAS: COVERED PATIO: 107 sq. ft, PATIO: 142 sq. ft, ROOM: 54 sq. ft,  
 ELECTRICAL ROOM: 100 sq. ft, PORCH: 174 sq. ft, DECK: 331 sq. ft,  
 GARAGE: 813 sq. ft, FIREPLACE: 9 sq. ft, OPEN TO BELOW: 333 sq. ft,  
 LOW CEILING: 29 sq. ft

MEASUREMENTS CALCULATED BY V1Photos.COM ARE DEEMED HIGHLY RELIABLE BUT NOT GUARANTEED.



Disclaimer: Sizes and Dimensions are Approximate, Actual May Vary.



**Katie Robinson**  
 970-430-9630  
 katiarobinson@windermere.com

