



Single Family



2954 SQFT



4 Beds



2/1 Baths



2 Car



0.15 Acre

## PROPERTY DETAILS

Located in the gated golf and tennis community of Summerfield, this 2-story home features a large screened heated pool and spa. Situated on a private lake lot with wooded preserves, this home offers 4 bedrooms, 2 bathrooms, and a powder room. The main bedroom is located on the first level, with the other 3 bedrooms upstairs. The living and dining room area boasts high volume ceilings and oak hardwood flooring throughout. The kitchen has real wood cabinets and Corian countertops, with a large breakfast bar counter that opens to the family room. Enjoy the lake view from the separate screened and covered patio off the kitchen. Additional features include an interior laundry area, a full 2-car garage with a portable home generator hook-up, and full home window hurricane protection. This home is in a great community with many amenities.



**Bob Weyrauch**

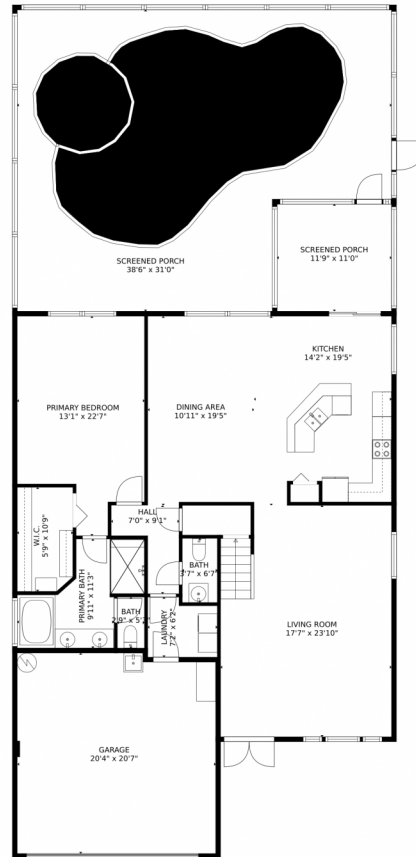
561-305-1491

BobWeyrauch@BHHSFloridaRealty.net



Scan code  
for more  
property  
details





GROSS INTERNAL AREA  
FLOOR 1: 1480 sq. ft, FLOOR 2: 664 sq. ft  
EXCLUDED AREAS: SCREENED PORCH: 706 sq. ft, GARAGE: 414 sq. ft, OPEN TO BELOW: 878 sq. ft  
TOTAL: 2144 sq. ft  
MEASUREMENTS CALCULATED BY V1Photos.com ARE DEEMED HIGHLY RELIABLE BUT NOT GUARANTEED.

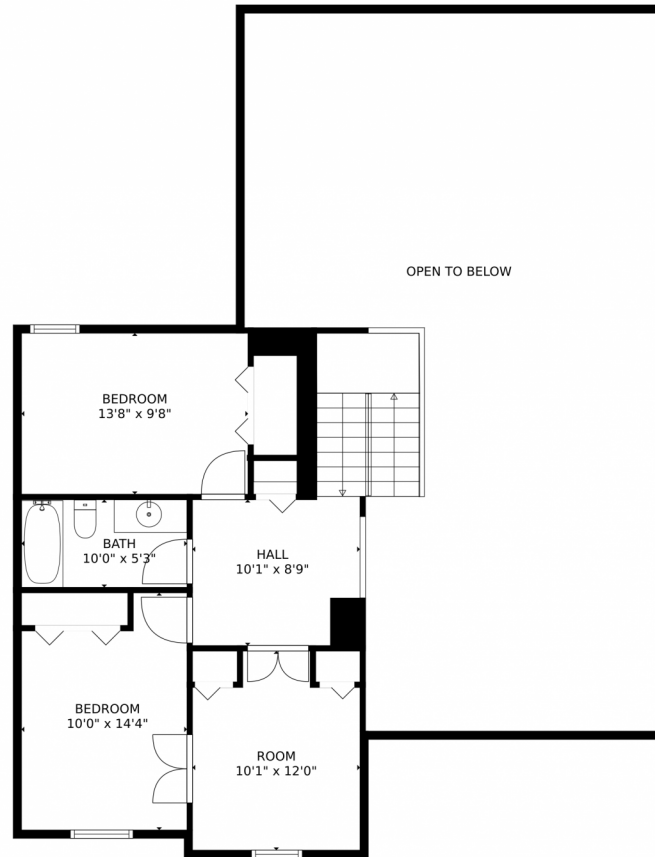


Disclaimer: Sizes and Dimensions are Approximate, Actual May Vary.



**Bob Weyrauch**  
561-305-1491  
BobWeyrauch@BHHSFloridaRealty.net





GROSS INTERNAL AREA  
FLOOR 1: 1480 sq. ft, FLOOR 2: 664 sq. ft  
EXCLUDED AREAS: SCREENED PORCH: 706 sq. ft, GARAGE: 414 sq. ft, OPEN TO BELOW: 878 sq. ft  
TOTAL: 2144 sq. ft  
MEASUREMENTS CALCULATED BY V1Photos.COM ARE DEEMED HIGHLY RELIABLE BUT NOT GUARANTEED.



Disclaimer: Sizes and Dimensions are Approximate, Actual May Vary.



**Bob Weyrauch**  
561-305-1491  
BobWeyrauch@BHHSFloridaRealty.net

