



3315 Baltimore Avenue
Pueblo, CO 81008



Multi Family



2500 SQFT



3 Beds



1/1 Baths



1 Car

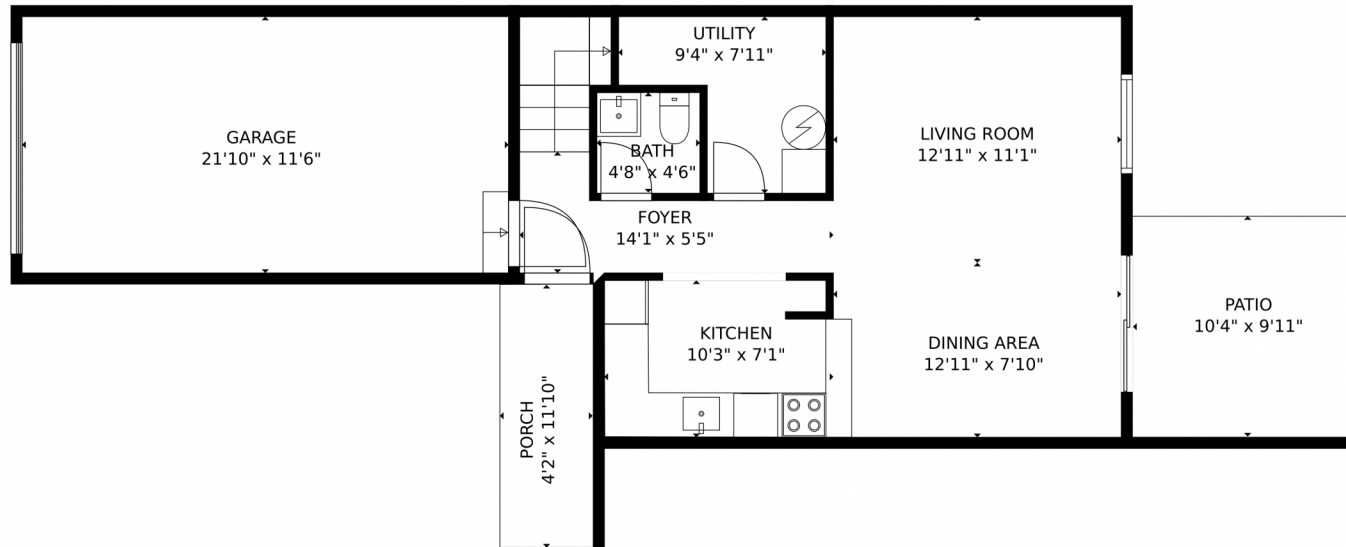
Ron Chmiel
719-582-3478
vision1@vision1properties.com



Scan code
for more
property
details



3315 Baltimore Avenue, Pueblo, CO 81008 – Main Level



GROSS INTERNAL AREA
FLOOR 1: 483 sq. ft, FLOOR 2: 511 sq. ft
EXCLUDED AREAS: GARAGE: 252 sq. ft, PATIO: 103 sq. ft, PORCH: 50 sq. ft
TOTAL: 994 sq. ft
MEASUREMENTS CALCULATED BY V1Photos.COM ARE DEEMED HIGHLY RELIABLE BUT NOT GUARANTEED.

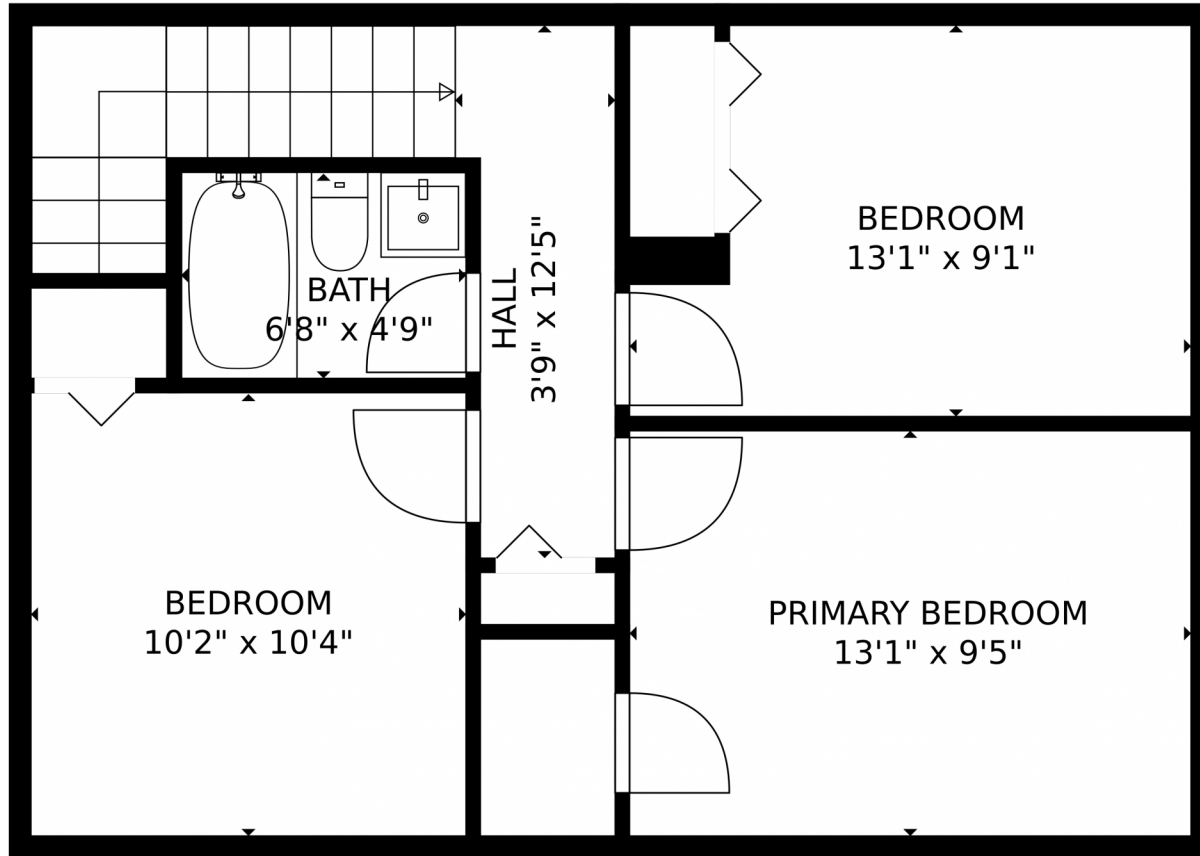


Disclaimer: Sizes and Dimensions are Approximate, Actual May Vary.

Ron Chmiel
719-582-3478
vision1@vision1properties.com



3315 Baltimore Avenue, Pueblo, CO 81008 – Upper Level



GROSS INTERNAL AREA
FLOOR 1: 483 sq. ft, FLOOR 2: 511 sq. ft
EXCLUDED AREAS: GARAGE: 252 sq. ft, PATIO: 103 sq. ft, PORCH: 50 sq. ft
TOTAL: 994 sq. ft
MEASUREMENTS CALCULATED BY V1Photos.COM ARE DEEMED HIGHLY RELIABLE BUT NOT GUARANTEED.

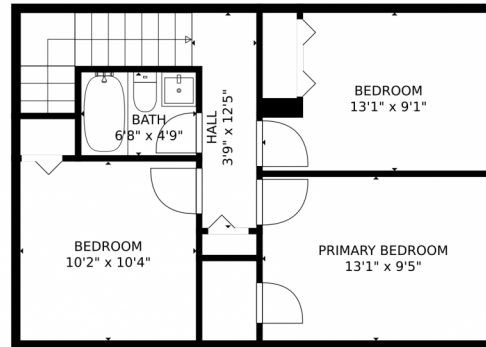


Disclaimer: Sizes and Dimensions are Approximate, Actual May Vary.

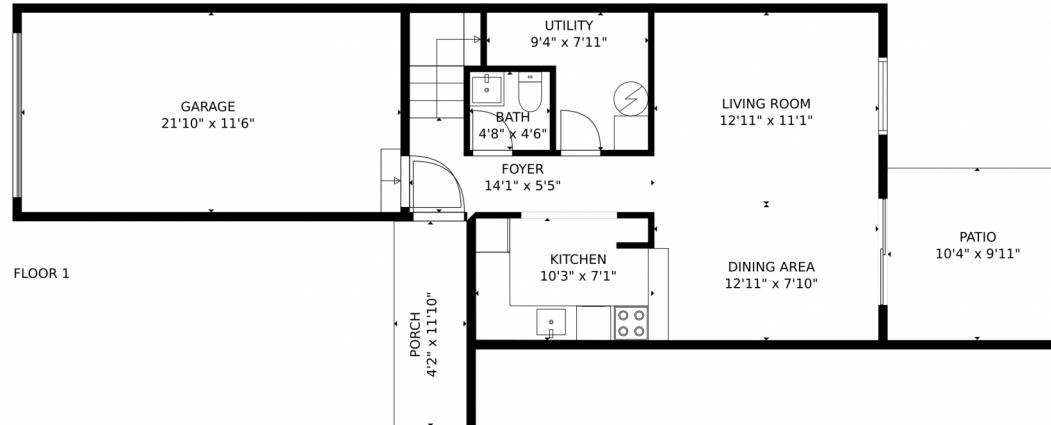
Ron Chmiel
719-582-3478
vision1@vision1properties.com



3315 Baltimore Avenue, Pueblo, CO 81008 – All Levels



FLOOR 2



FLOOR 1

GROSS INTERNAL AREA
FLOOR 1: 483 sq. ft, FLOOR 2: 511 sq. ft
EXCLUDED AREAS: GARAGE: 252 sq. ft, PATIO: 103 sq. ft, PORCH: 50 sq. ft
TOTAL: 994 sq. ft
MEASUREMENTS CALCULATED BY V1Photos.COM ARE DEEMED HIGHLY RELIABLE BUT NOT GUARANTEED.



Disclaimer: Sizes and Dimensions are Approximate, Actual May Vary.

Ron Chmiel
719-582-3478
vision1@vision1properties.com

