




 Single Family

 2564 SQFT

 3 Beds

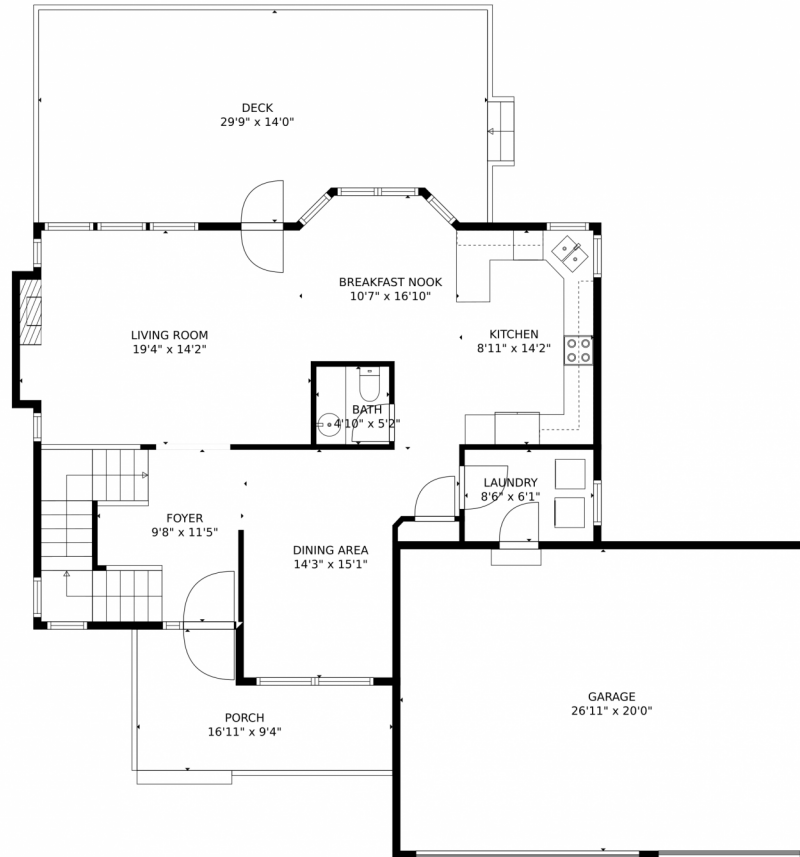
 2/1 Baths



Taylor Haas
303-665-7368
taylorh@coloradorpm.com
<https://www.coloradorpm.com/available-rental-properties-denver>



2063 Shiloh Dr, Castle Rock, CO 80104 – Main Level



GROSS INTERNAL AREA
Below Ground: 469 sq. ft, FLOOR 2: 946 sq. ft, FLOOR 3: 1047 sq. ft
EXCLUDED AREAS: ELECTRICAL ROOM: 93 sq. ft, LOW CEILING: 318 sq. ft, UNDEFINED: 9 sq. ft,
GARAGE: 539 sq. ft, DECK: 400 sq. ft, PORCH: 120 sq. ft,
OPEN TO BELOW: 56 sq. ft
TOTAL: 2462 sq. ft
MEASUREMENTS CALCULATED BY V1Photos.COM ARE DEEMED HIGHLY RELIABLE BUT NOT GUARANTEED.



Disclaimer: Sizes and Dimensions are Approximate, Actual May Vary.



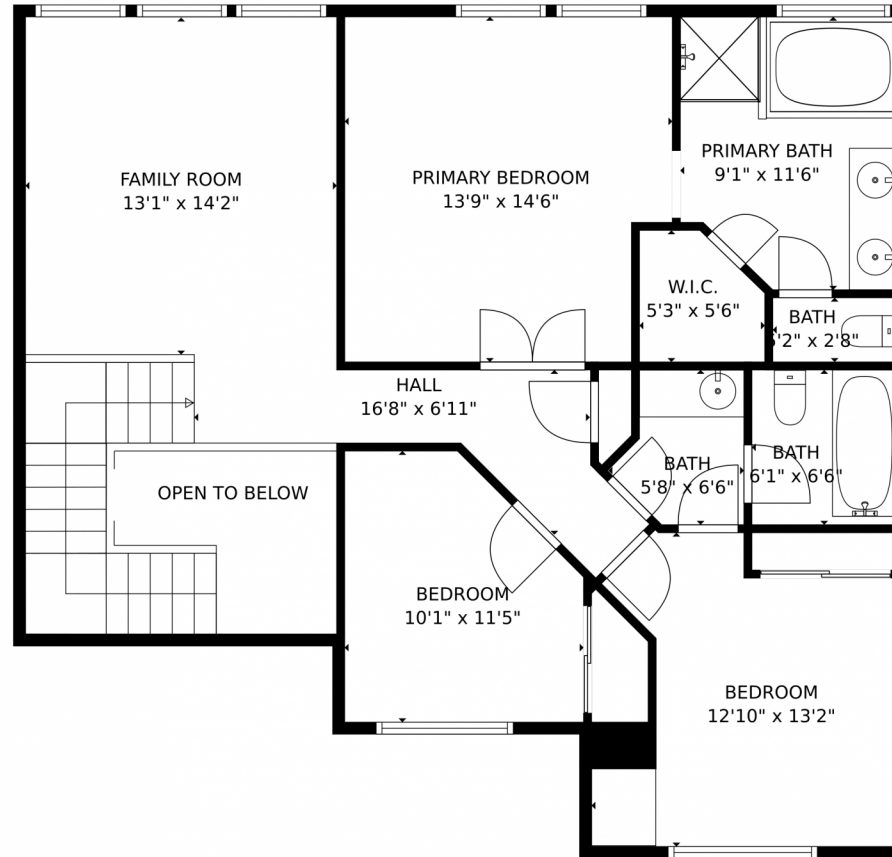
Taylor Haas
303-665-7368
taylorh@coloradorpm.com
<https://www.coloradorpm.com/available-rental-properties-denver>



Scan code
for more
property
details



2063 Shiloh Dr, Castle Rock, CO 80104 – Upper Level



GROSS INTERNAL AREA
Below Ground: 469 sq. ft, FLOOR 2: 946 sq. ft, FLOOR 3: 1047 sq. ft
EXCLUDED AREAS: ELECTRICAL ROOM: 93 sq. ft, LOW CEILING: 318 sq. ft, UNDEFINED: 9 sq. ft,
GARAGE: 539 sq. ft, DECK: 400 sq. ft, PORCH: 120 sq. ft,
OPEN TO BELOW: 56 sq. ft
TOTAL: 2462 sq. ft
MEASUREMENTS CALCULATED BY V1Photos.com ARE DEEMED HIGHLY RELIABLE BUT NOT GUARANTEED.



Disclaimer: Sizes and Dimensions are Approximate, Actual May Vary.



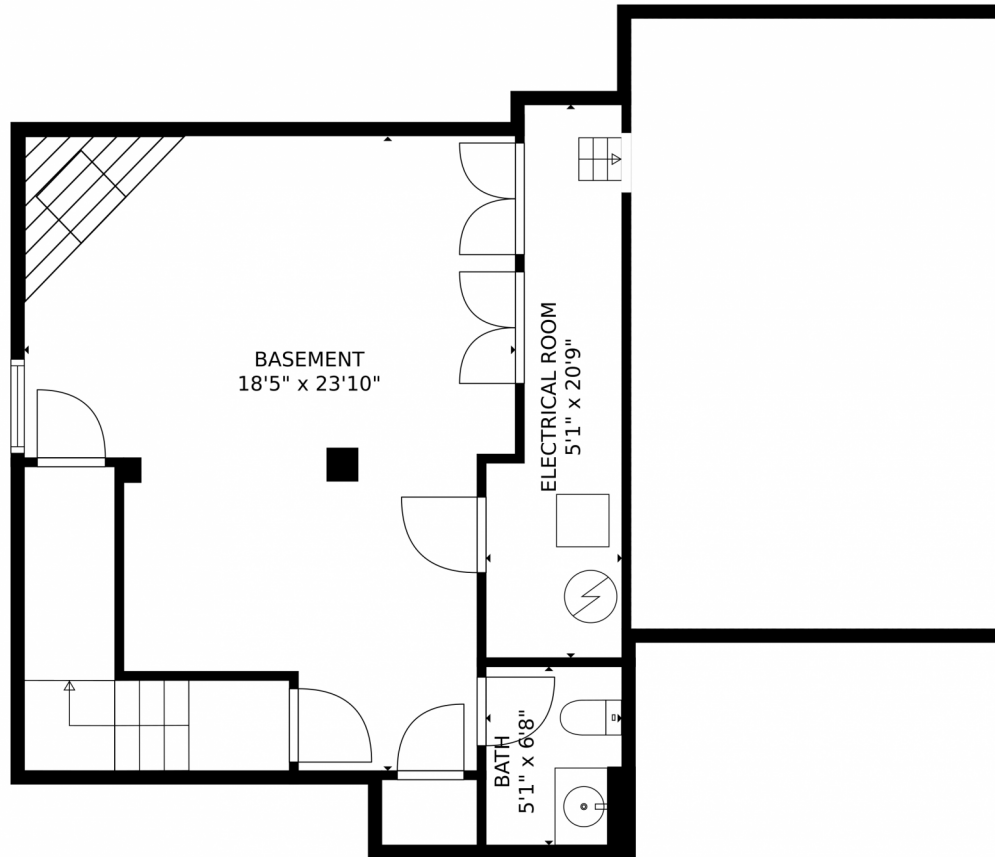
Taylor Haas
303-665-7368
taylorh@coloradorpm.com
<https://www.coloradorpm.com/available-rental-properties-denver>



Scan code
for more
property
details



2063 Shiloh Dr, Castle Rock, CO 80104 – Lower Level



GROSS INTERNAL AREA
Below Ground: 469 sq. ft, FLOOR 2: 946 sq. ft, FLOOR 3: 1047 sq. ft
EXCLUDED AREAS: ELECTRICAL ROOM: 93 sq. ft, LOW CEILING: 318 sq. ft, UNDEFINED: 9 sq. ft,
GARAGE: 539 sq. ft, DECK: 400 sq. ft, PORCH: 120 sq. ft,
OPEN TO BELOW: 56 sq. ft
TOTAL: 2462 sq. ft
MEASUREMENTS CALCULATED BY V1Photos.COM ARE DEEMED HIGHLY RELIABLE BUT NOT GUARANTEED.



Disclaimer: Sizes and Dimensions are Approximate, Actual May Vary.



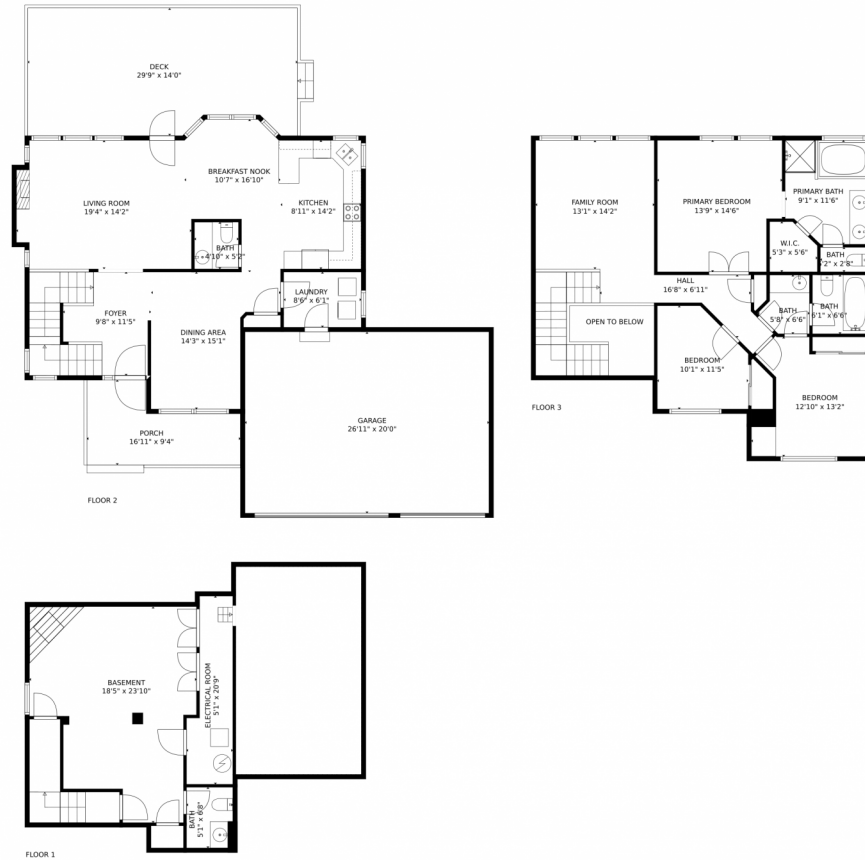
Taylor Haas
303-665-7368
taylorh@coloradorpm.com
<https://www.coloradorpm.com/available-rental-properties-denver>



Scan code
for more
property
details



2063 Shiloh Dr, Castle Rock, CO 80104 – All Levels



GROSS INTERNAL AREA
Below Ground: 469 sq. ft, FLOOR 2: 946 sq. ft, FLOOR 3: 1047 sq. ft
EXCLUDED AREAS: ELECTRICAL ROOM: 93 sq. ft, LOW CEILING: 318 sq. ft, UNDEFINED: 9 sq. ft,
GARAGE: 539 sq. ft, DECK: 400 sq. ft, PORCH: 120 sq. ft,
OPEN TO BELOW: 56 sq. ft
TOTAL: 2462 sq. ft
MEASUREMENTS CALCULATED BY V1Photos.COM ARE DEEMED HIGHLY RELIABLE BUT NOT GUARANTEED.



Disclaimer: Sizes and Dimensions are Approximate, Actual May Vary.



Taylor Haas
303-665-7368
taylorh@coloradorpm.com
<https://www.coloradorpm.com/available-rental-properties-denver>



Scan code
for more
property
details

