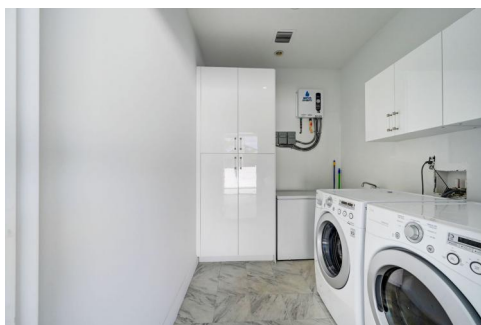
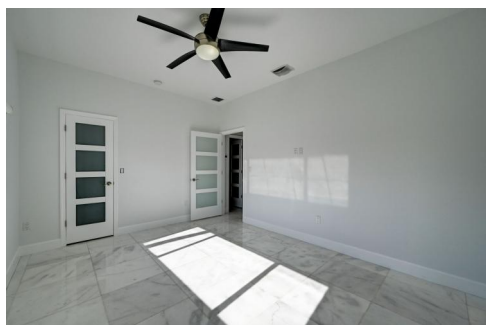


19521 Northeast 22nd Road
North Miami Beach, FL 33179

COMMUNITY: SKYLAKE

MLS # A11492033

PRICE \$1,699,000



Single Family



3300 SQFT



5 Beds



3 Baths



5 Car



0.24 Acre

PROPERTY DETAILS

Gorgeous Home in Skylake! Completely remodeled with high-end finishes inside and out! Open layout connecting dining room, kitchen, and living room. 3,300 SqFt home with 5 bedrooms, 3 full bathrooms, and extra room for office or playroom. Brand new kitchen and bathrooms, marble floors, high impact windows and doors. Perfect for entertaining with heated pool, mini soccer field, gym, BBQ area. Includes generator system and electric fence with 2 gates. No details overlooked!



Carlos Mosquera
305-608-9916
abccarlos@hotmail.com



Scan code
for more
property
details



19521 Northeast 22nd Road, North Miami Beach, FL 33179 – All Levels



GROSS INTERNAL AREA
FLOOR 1: 2651 sq. ft
EXCLUDED AREAS: STORAGE: 95 sq. ft, PATIO: 1440 sq. ft
TOTAL: 2651 sq. ft
MEASUREMENTS CALCULATED BY V1Photos.COM ARE DEEMED HIGHLY RELIABLE BUT NOT GUARANTEED.

Disclaimer: Sizes and Dimensions are Approximate, Actual May Vary.



Carlos Mosquera
305-608-9916
abccarlos@hotmail.com



Scan code
for more
property
details