




 Single Family

 1020 SQFT

 3 Beds

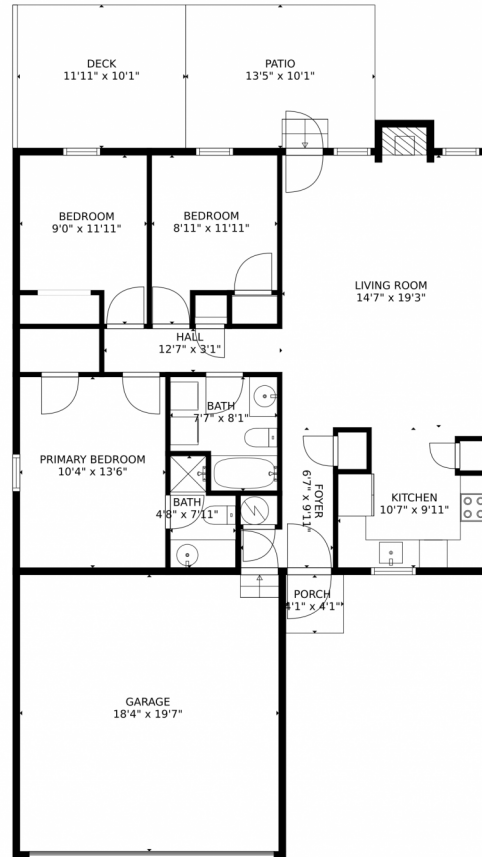
 2 Baths



Taylor Haas
303-665-7368
taylorh@coloradorpm.com
<https://www.coloradorpm.com/available-rental-properties-denver>



970 Ancestra Dr, Fountain, CO 80817 – Main Level



GROSS INTERNAL AREA
FLOOR 1: 960 sq. ft.
EXCLUDED AREAS: PORCH: 17 sq. ft, DECK: 124 sq. ft, PATIO: 135 sq. ft,
GARAGE: 358 sq. ft, UNDEFINED: 5 sq. ft, FIREPLACE: 5 sq. ft
TOTAL: 960 sq. ft
MEASUREMENTS CALCULATED BY V1Photos.com ARE DEEMED HIGHLY RELIABLE BUT NOT GUARANTEED.



Disclaimer: Sizes and Dimensions are Approximate, Actual May Vary.



Taylor Haas
303-665-7368
taylorh@coloradorpm.com
<https://www.coloradorpm.com/available-rental-properties-denver>



Scan code
for more
property
details

