




 Single Family

 1600 SQFT

 4 Beds

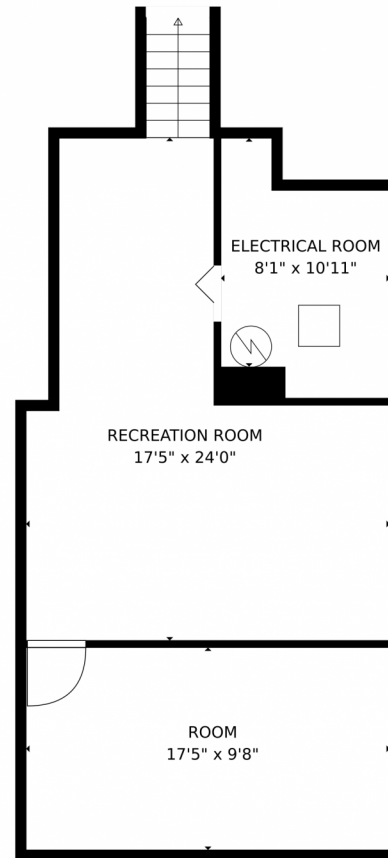
 2 Baths

 1 Car



Jordan Kermes
952-956-2958
jkermes@wedgewoodhomesrealty.com
<https://colorado.wedgewoodhomesrealty.com>





GROSS INTERNAL AREA
Below Ground: 488 sq. ft, FLOOR 2: 1049 sq. ft
EXCLUDED AREAS: ELECTRICAL ROOM: 86 sq. ft, PORCH: 89 sq. ft, PATIO: 39 sq. ft
TOTAL: 1537 sq. ft
MEASUREMENTS CALCULATED BY V1Photos.com ARE DEEMED HIGHLY RELIABLE BUT NOT GUARANTEED.



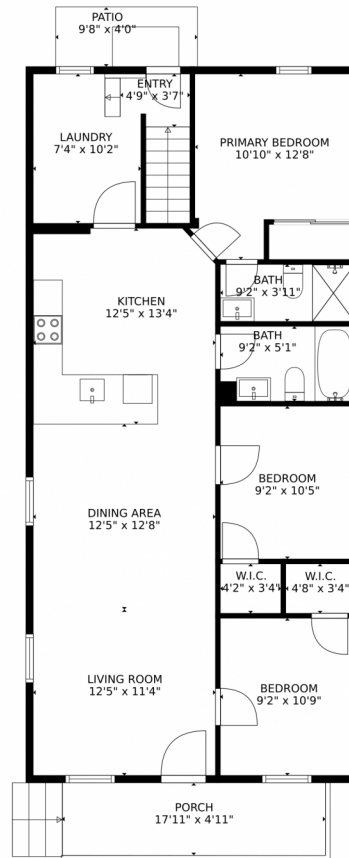
Disclaimer: Sizes and Dimensions are Approximate, Actual May Vary.



Jordan Kermes
952-956-2958
jkermes@wedgewoodhomesrealty.com
<https://colorado.wedgewoodhomesrealty.com>



2041 Spruce Street, Pueblo, CO 81004 – Main Level



GROSS INTERNAL AREA
Below Ground: 488 sq. ft, FLOOR 2: 1049 sq. ft
EXCLUDED AREAS: ELECTRICAL ROOM: 86 sq. ft, PORCH: 89 sq. ft, PATIO: 39 sq. ft
TOTAL: 1537 sq. ft
MEASUREMENTS CALCULATED BY V1Photos.com ARE DEEMED HIGHLY RELIABLE BUT NOT GUARANTEED.



Disclaimer: Sizes and Dimensions are Approximate, Actual May Vary.



Jordan Kermes

952-956-2958

jkermes@wedgewoodhomesrealty.com

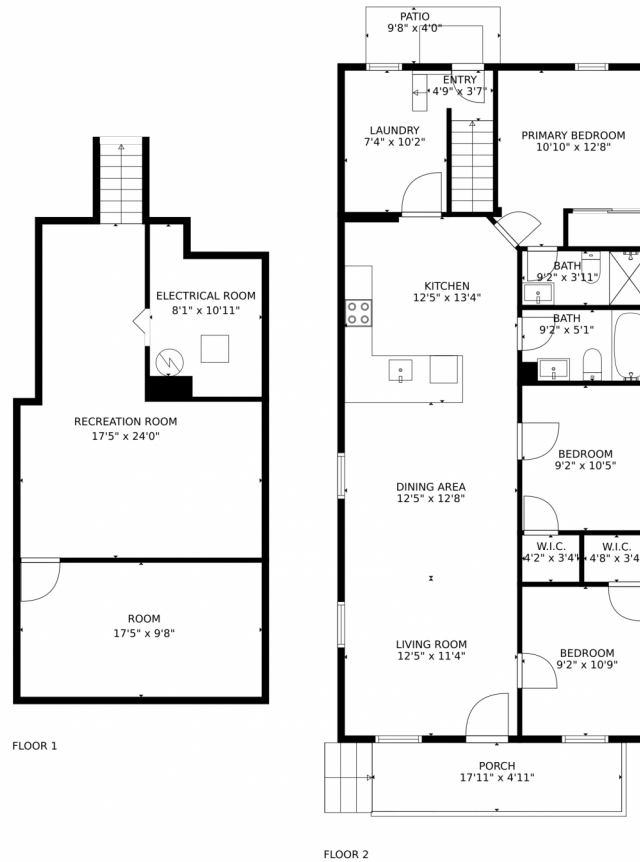
<https://colorado.wedgewoodhomesrealty.com>



Scan code
for more
property
details



2041 Spruce Street, Pueblo, CO 81004 – All Levels



GROSS INTERNAL AREA
Below Ground: 488 sq. ft, FLOOR 2: 1049 sq. ft
EXCLUDED AREAS: ELECTRICAL ROOM: 86 sq. ft, PORCH: 89 sq. ft, PATIO: 39 sq. ft
TOTAL: 1537 sq. ft
MEASUREMENTS CALCULATED BY V1Photos.com ARE DEEMED HIGHLY RELIABLE BUT NOT GUARANTEED.



Disclaimer: Sizes and Dimensions are Approximate, Actual May Vary.



Jordan Kermes

952-956-2958

jkermes@wedgewoodhomesrealty.com

<https://colorado.wedgewoodhomesrealty.com>



Scan code
for more
property
details

