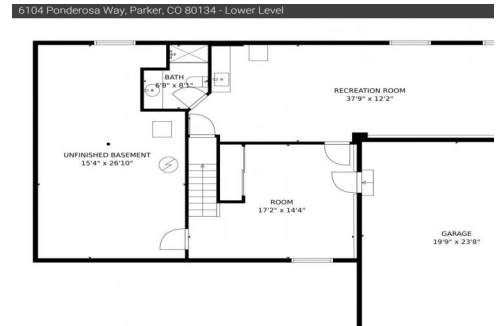




6104 Ponderosa Way
 Parker, CO 80134
 COMMUNITY: The Pinery

MLS # 6068231
 PRICE \$797



Single Family
 3850 SQFT
 4 Beds
 4 Baths
 2 Car
 0.26 Acre

PROPERTY DETAILS

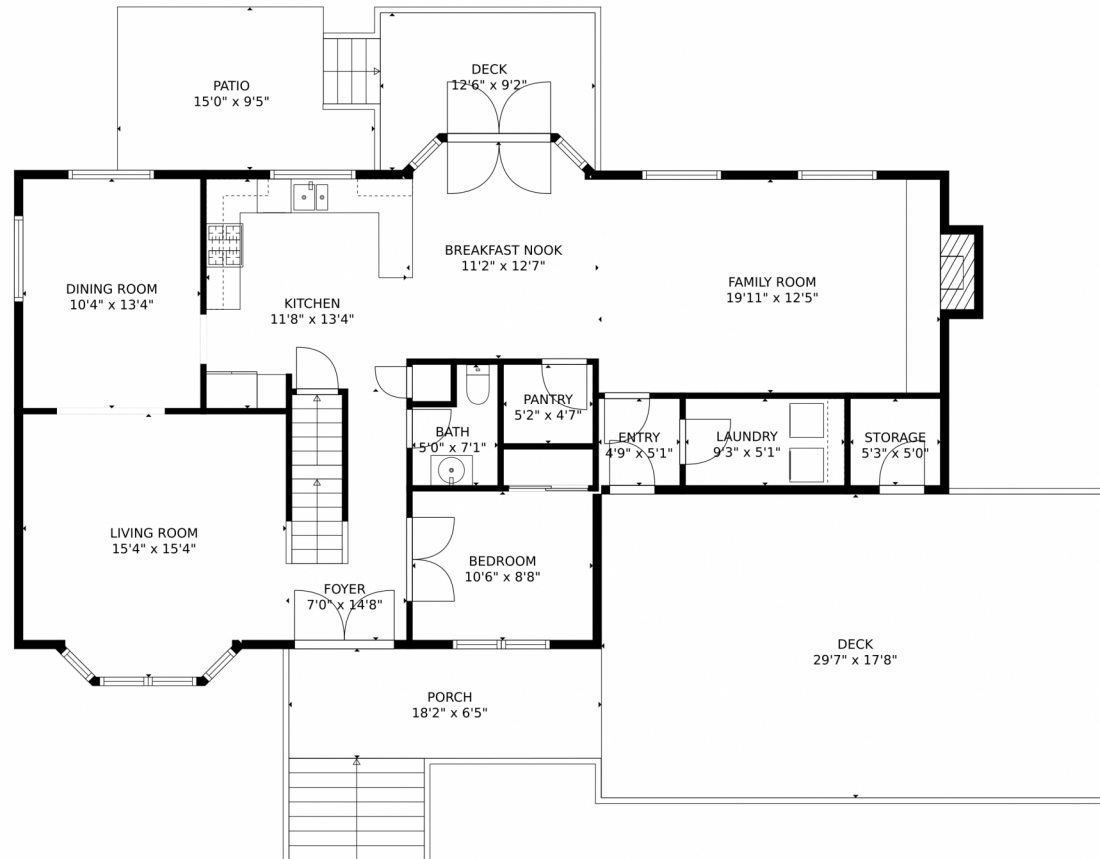
Discover tranquility in this captivating 4-bedroom, 4-bathroom home in The Pinery. Beautiful decks and breathtaking surroundings create an ideal outdoor living space. Vaulted ceilings, wood beams, and fireplaces create a cozy atmosphere. The open-concept kitchen features modern appliances, breakfast bar seating, and a walk-in pantry. The dedicated office offers a private space to work from home. The spacious basement with its own bathroom can be used as an entertainment hub or an in-law suite. The large primary suite has a private balcony with peaceful views. Three additional bedrooms and an updated full bathroom complete the upstairs.



Courtney Claytor
 720-556-8013
 courtneyclaytorhome@gmail.com



6104 Ponderosa Way, Parker, CO 80134 – Main Level



GROSS INTERNAL AREA
Below Ground: 750 sq. ft, FLOOR 2: 1264 sq. ft, FLOOR 3: 1094 sq. ft
EXCLUDED AREAS: GARAGE: 466 sq. ft, UNFINISHED BASEMENT: 380 sq. ft, FIREPLACE: 14 sq. ft,
STORAGE: 27 sq. ft, DECK: 618 sq. ft, PORCH: 116 sq. ft,
PATIO: 139 sq. ft, BALCONY: 115 sq. ft
TOTAL: 3108 sq. ft
MEASUREMENTS CALCULATED BY V1Photos.COM ARE DEEMED HIGHLY RELIABLE BUT NOT GUARANTEED.



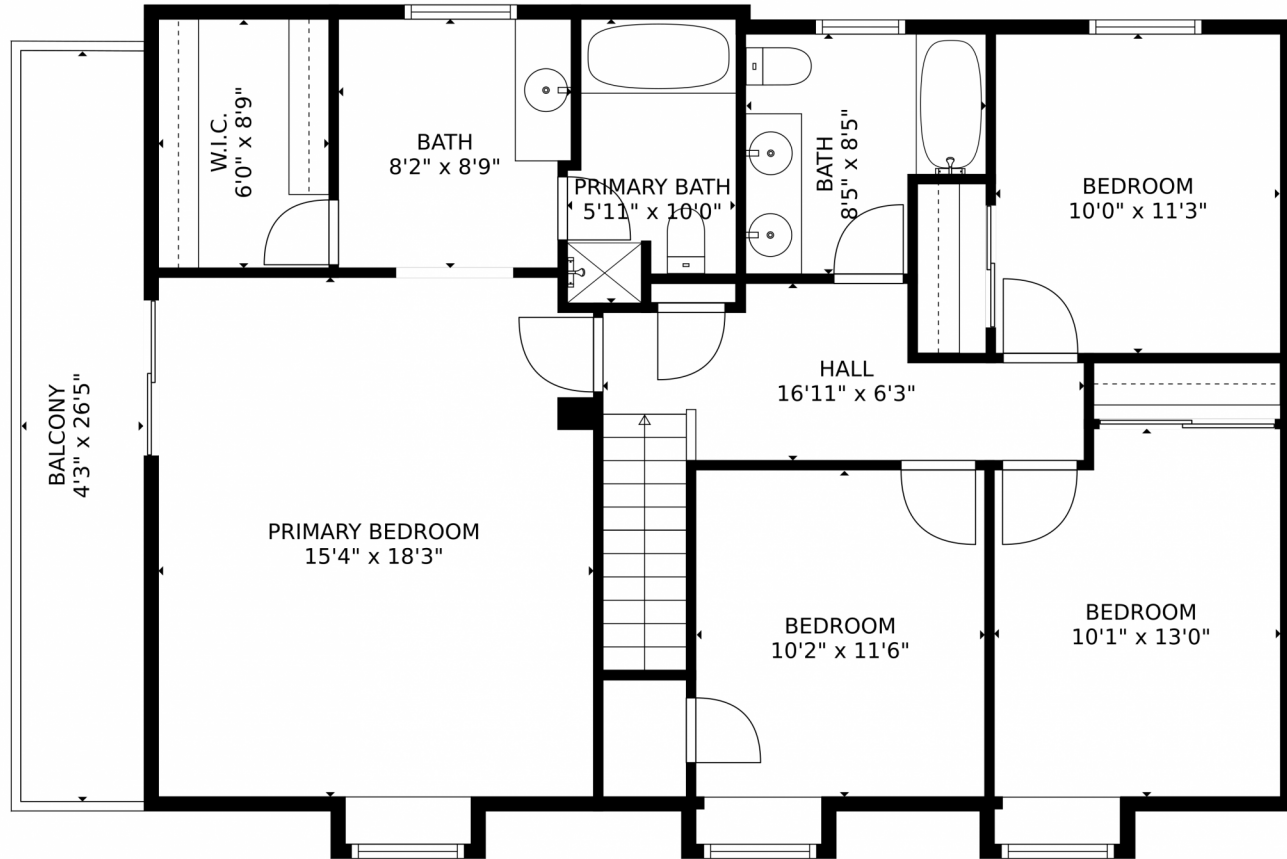
Disclaimer: Sizes and Dimensions are Approximate, Actual May Vary.



Courtney Claytor
720-556-8013
courtneyclaytorhome@gmail.com



6104 Ponderosa Way, Parker, CO 80134 – Upper Level



GROSS INTERNAL AREA
Below Ground: 750 sq. ft, FLOOR 2: 1264 sq. ft, FLOOR 3: 1094 sq. ft
EXCLUDED AREAS: GARAGE: 466 sq. ft, UNFINISHED BASEMENT: 380 sq. ft, FIREPLACE: 14 sq. ft,
STORAGE: 27 sq. ft, DECK: 618 sq. ft, PORCH: 116 sq. ft,
PATIO: 139 sq. ft, BALCONY: 115 sq. ft
TOTAL: 3108 sq. ft
MEASUREMENTS CALCULATED BY V1Photos.COM ARE DEEMED HIGHLY RELIABLE BUT NOT GUARANTEED.



Disclaimer: Sizes and Dimensions are Approximate, Actual May Vary.



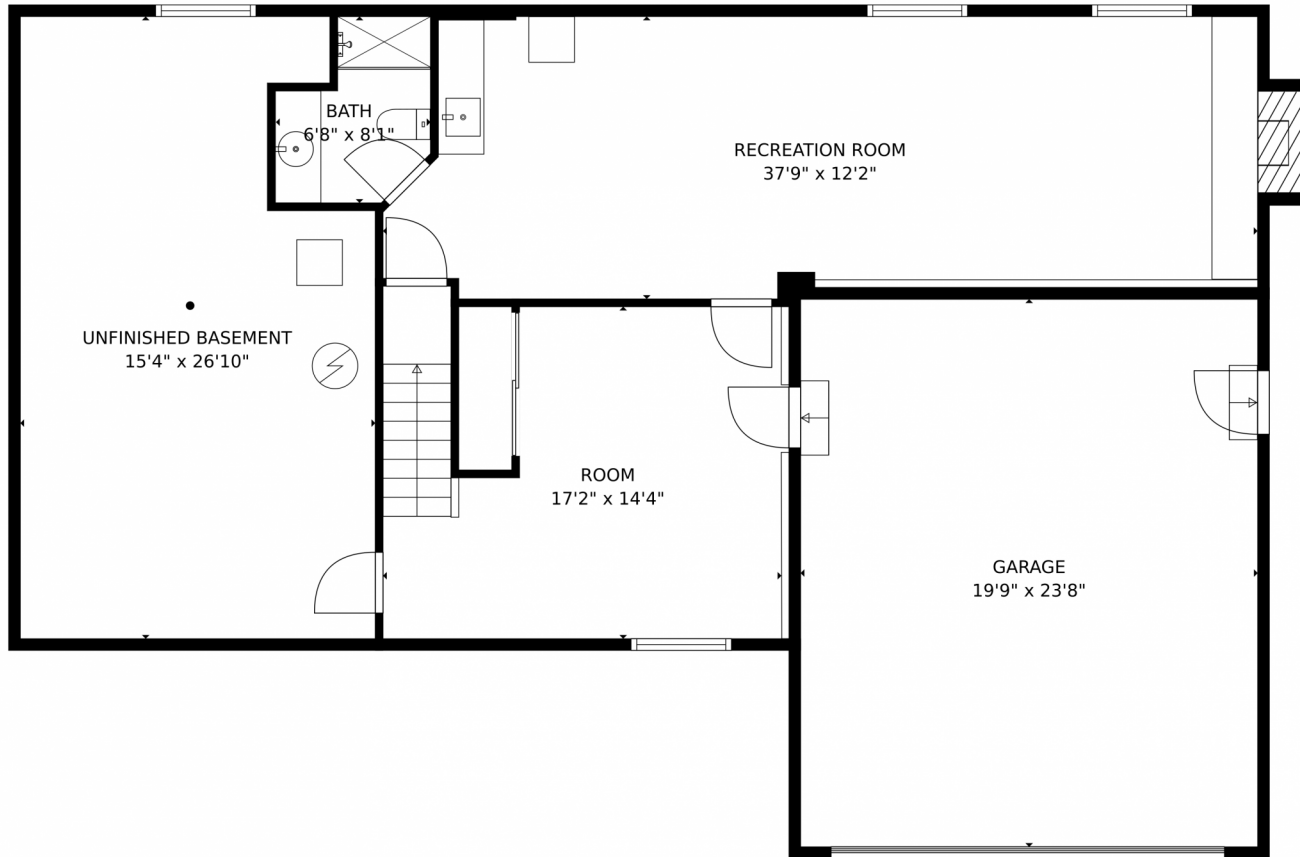
Courtney Claytor
720-556-8013
courtneyclaytorhome@gmail.com



Scan code
for more
property
details



6104 Ponderosa Way, Parker, CO 80134 – Lower Level



GROSS INTERNAL AREA
Below Ground: 750 sq. ft, FLOOR 2: 1264 sq. ft, FLOOR 3: 1094 sq. ft
EXCLUDED AREAS: GARAGE: 466 sq. ft, UNFINISHED BASEMENT: 380 sq. ft, FIREPLACE: 14 sq. ft,
STORAGE: 27 sq. ft, DECK: 618 sq. ft, PORCH: 116 sq. ft,
PATIO: 139 sq. ft, BALCONY: 115 sq. ft
TOTAL: 3108 sq. ft
MEASUREMENTS CALCULATED BY V1Photos.com ARE DEEMED HIGHLY RELIABLE BUT NOT GUARANTEED.



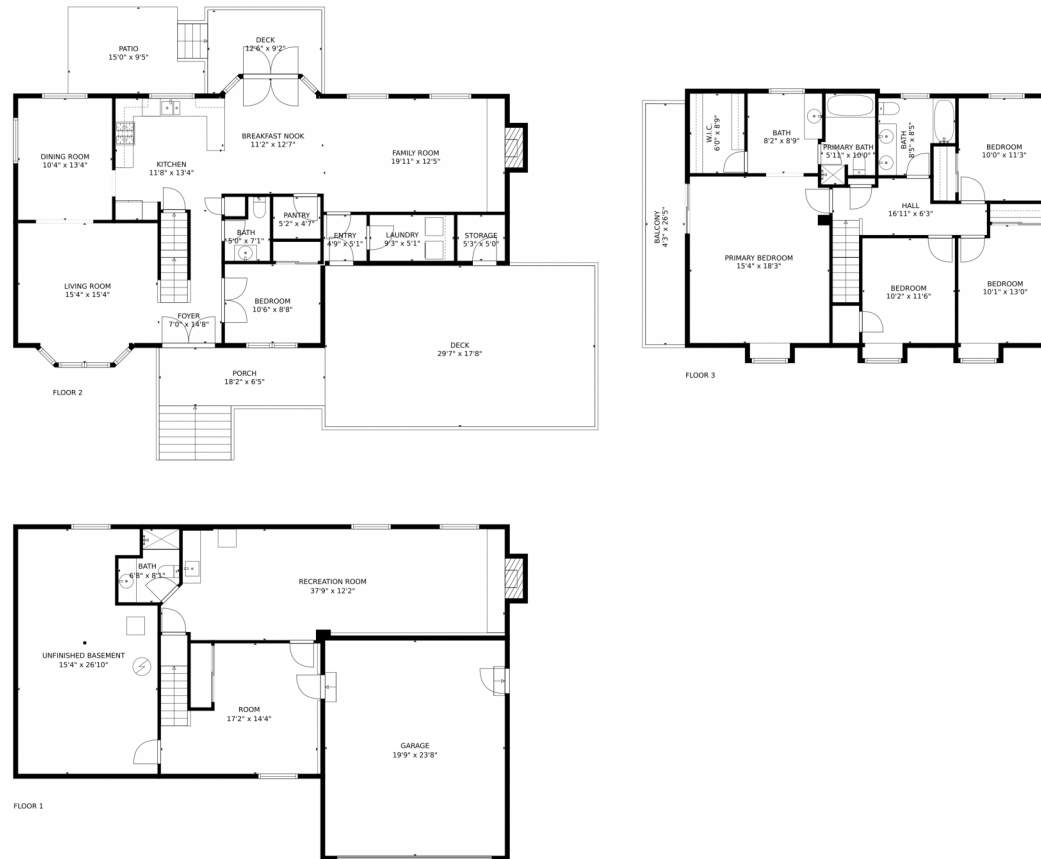
Disclaimer: Sizes and Dimensions are Approximate, Actual May Vary.



Courtney Claytor
720-556-8013
courtneyclaytorhome@gmail.com



6104 Ponderosa Way, Parker, CO 80134 – All Levels



GROSS INTERNAL AREA
 Below Ground: 750 sq. ft, FLOOR 2: 1264 sq. ft, FLOOR 3: 1094 sq. ft
 EXCLUDED AREAS: GARAGE: 466 sq. ft, UNFINISHED BASEMENT: 380 sq. ft, FIREPLACE: 14 sq. ft,
 STORAGE: 27 sq. ft, DECK: 618 sq. ft, PORCH: 116 sq. ft,
 PATIO: 139 sq. ft, BALCONY: 115 sq. ft
 TOTAL: 3108 sq. ft
 MEASUREMENTS CALCULATED BY V1Photos.COM ARE DEEMED HIGHLY RELIABLE BUT NOT GUARANTEED.



Disclaimer: Sizes and Dimensions are Approximate, Actual May Vary.



Courtney Claytor
 720-556-8013
 courtneyclaytorhome@gmail.com

