




 Single Family

 1801 SQFT

 4 Beds

 2 Baths

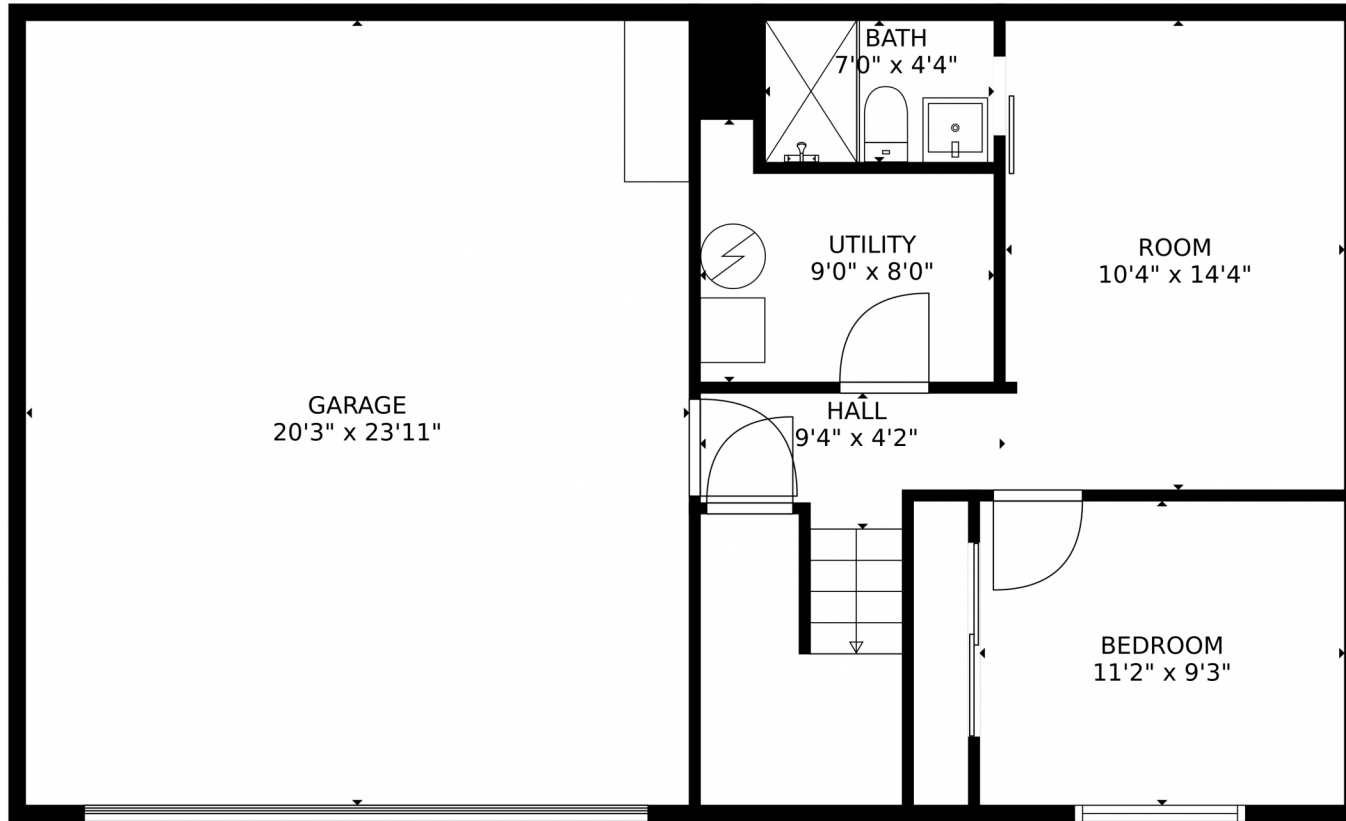
 2 Car



Jordan Kermes
952-956-2958
jkermes@wedgewoodhomesrealty.com
<https://colorado.wedgewoodhomesrealty.com>



3631 Garland Court, Colorado Springs, CO 80910 – lower Level



GROSS INTERNAL AREA
Below Ground: 410 sq. ft, FLOOR 2: 1201 sq. ft
EXCLUDED AREAS: GARAGE: 484 sq. ft, UTILITY: 60 sq. ft, PORCH: 23 sq. ft
TOTAL: 1611 sq. ft
MEASUREMENTS CALCULATED BY V1Photos.com ARE DEEMED HIGHLY RELIABLE BUT NOT GUARANTEED.



Disclaimer: Sizes and Dimensions are Approximate, Actual May Vary.



Jordan Kermes

952-956-2958

jkermes@wedgewoodhomesrealty.com

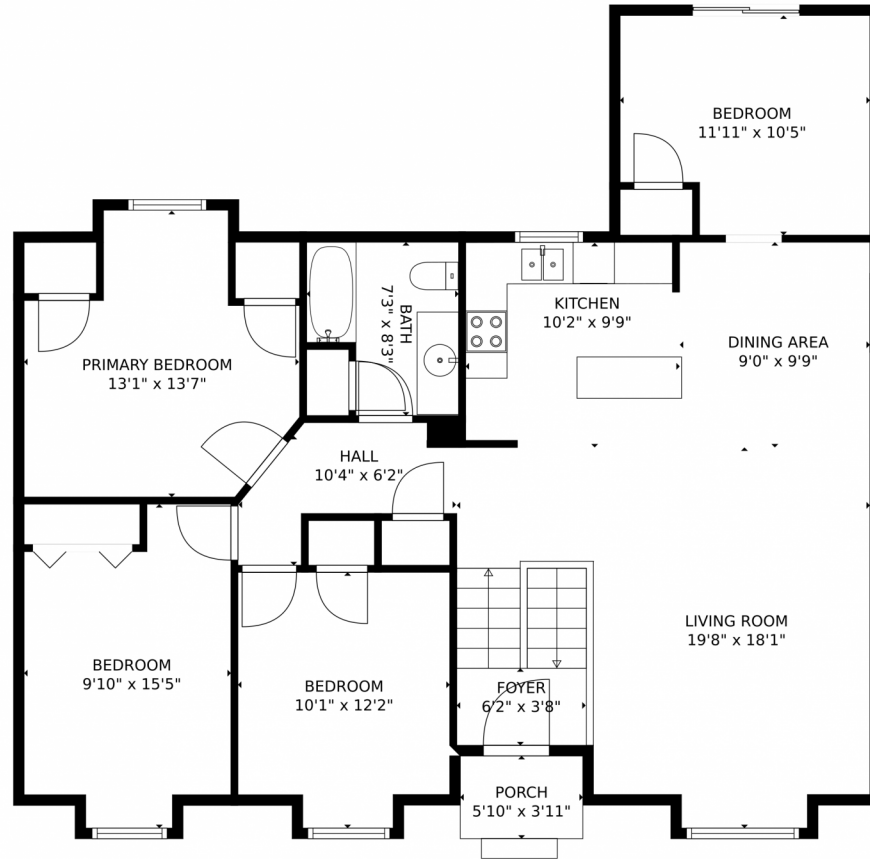
<https://colorado.wedgewoodhomesrealty.com>



Scan code
for more
property
details



3631 Garland Court, Colorado Springs, CO 80910 – Main level



GROSS INTERNAL AREA
Below Ground: 410 sq. ft, FLOOR 2: 1201 sq. ft
EXCLUDED AREAS: GARAGE: 484 sq. ft, UTILITY: 60 sq. ft, PORCH: 23 sq. ft
TOTAL: 1611 sq. ft
MEASUREMENTS CALCULATED BY V1Photos.COM ARE DEEMED HIGHLY RELIABLE BUT NOT GUARANTEED.



Disclaimer: Sizes and Dimensions are Approximate, Actual May Vary.



Jordan Kermes

952-956-2958

jkermes@wedgewoodhomesrealty.com

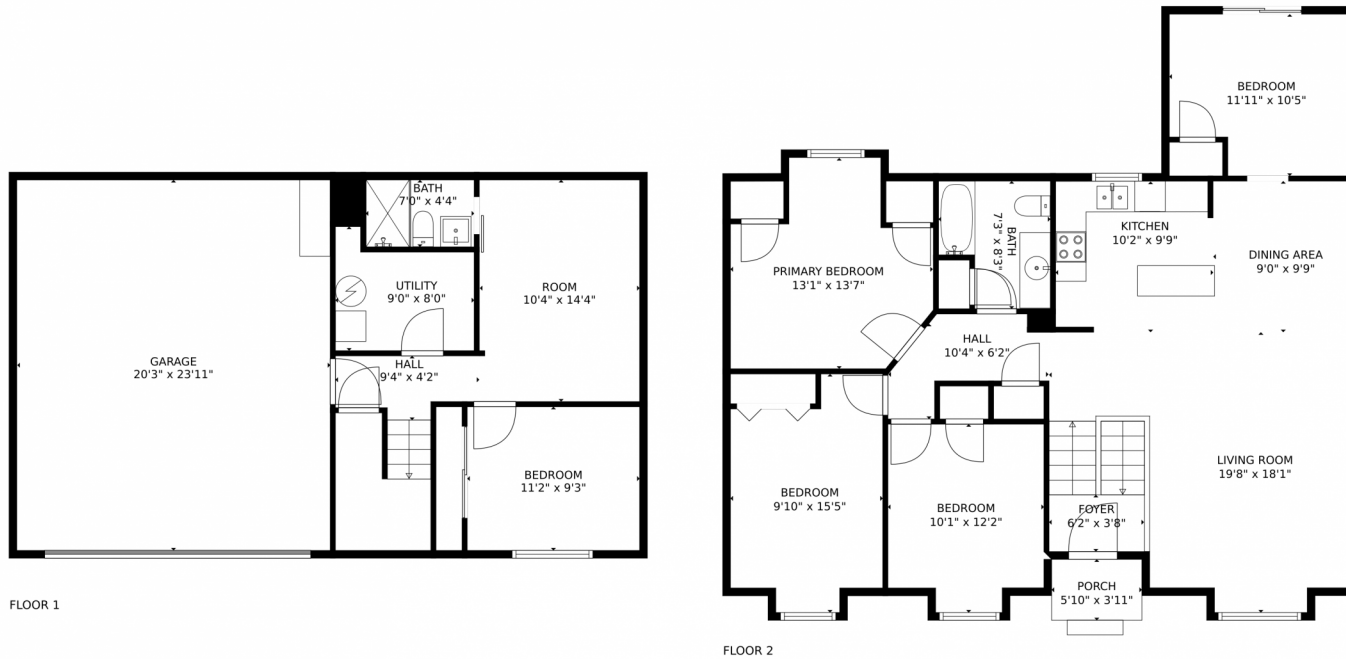
<https://colorado.wedgewoodhomesrealty.com>



Scan code
for more
property
details



3631 Garland Court, Colorado Springs, CO 80910 – All Levels



GROSS INTERNAL AREA
Below Ground: 410 sq. ft, FLOOR 2: 1201 sq. ft
EXCLUDED AREAS: GARAGE: 484 sq. ft, UTILITY: 60 sq. ft, PORCH: 23 sq. ft
TOTAL: 1611 sq. ft
MEASUREMENTS CALCULATED BY V1Photos.com ARE DEEMED HIGHLY RELIABLE BUT NOT GUARANTEED.



Disclaimer: Sizes and Dimensions are Approximate, Actual May Vary.



Jordan Kermes
952-956-2958
jkermes@wedgewoodhomesrealty.com
<https://colorado.wedgewoodhomesrealty.com>

