



Single Family



2299 SQFT

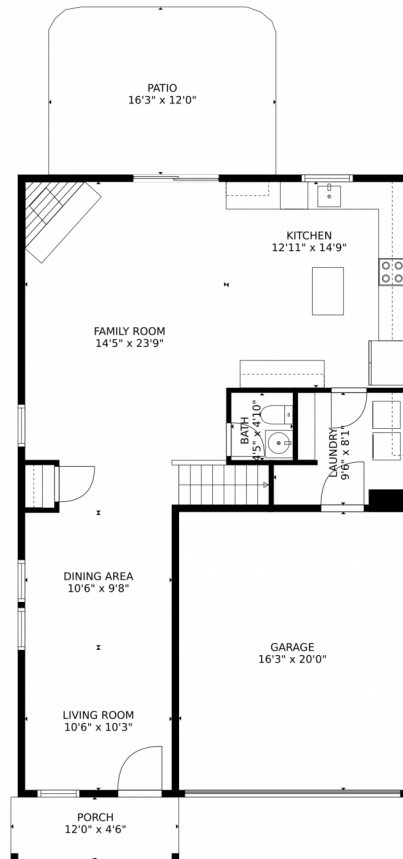


Rachel Burke
720-335-7193
rachel@yournestfinder.net
<https://rachelburke-1.myrealtyonegroup.com/>

Scan code
for more
property
details



2434 Morningview Lane, Castle Rock, CO 80109 – Main Level



GROSS INTERNAL AREA
FLOOR 1: 848 sq. ft, FLOOR 2: 1239 sq. ft
EXCLUDED AREAS: GARAGE: 325 sq. ft, PATIO: 194 sq. ft, PORCH: 55 sq. ft
TOTAL: 2087 sq. ft
MEASUREMENTS CALCULATED BY V1Photos.com ARE DEEMED HIGHLY RELIABLE BUT NOT GUARANTEED.



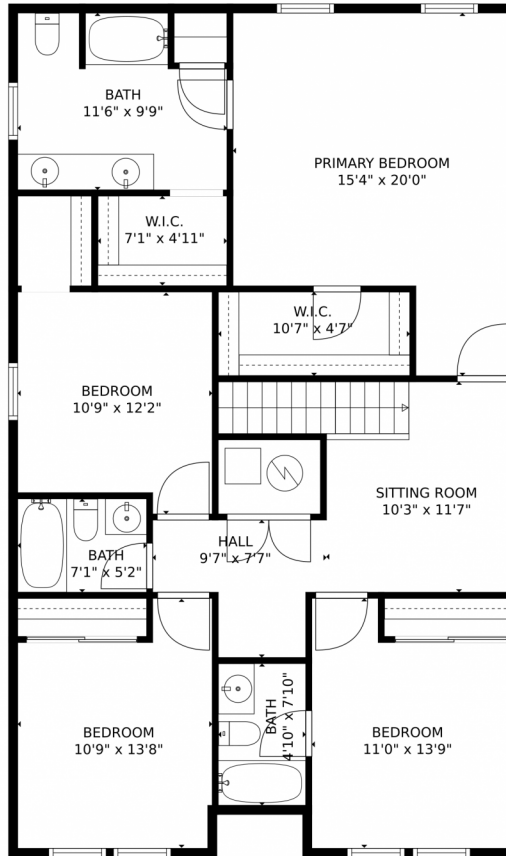
Disclaimer: Sizes and Dimensions are Approximate, Actual May Vary.



Rachel Burke
720-335-7193
rachel@yournestfinder.net
<https://rachelburke-1.myrealtyonegroup.com/>



2434 Morningview Lane, Castle Rock, CO 80109 – Second Level



GROSS INTERNAL AREA
FLOOR 1: 848 sq. ft, FLOOR 2: 1239 sq. ft
EXCLUDED AREAS: GARAGE: 325 sq. ft, PATIO: 194 sq. ft, PORCH: 55 sq. ft
TOTAL: 2087 sq. ft
MEASUREMENTS CALCULATED BY V1Photos.COM ARE DEEMED HIGHLY RELIABLE BUT NOT GUARANTEED.



Disclaimer: Sizes and Dimensions are Approximate, Actual May Vary.



Rachel Burke
720-335-7193
rachel@yournestfinder.net
<https://rachelburke-1.myrealtyonegroup.com/>



2434 Morningview Lane, Castle Rock, CO 80109 – All Levels



GROSS INTERNAL AREA
FLOOR 1: 848 sq. ft, FLOOR 2: 1239 sq. ft
EXCLUDED AREAS: GARAGE: 325 sq. ft, PATIO: 194 sq. ft, PORCH: 55 sq. ft
TOTAL: 2087 sq. ft
MEASUREMENTS CALCULATED BY V1Photos.com ARE DEEMED HIGHLY RELIABLE BUT NOT GUARANTEED.



Disclaimer: Sizes and Dimensions are Approximate, Actual May Vary.



Rachel Burke
720-335-7193
rachel@yournestfinder.net
<https://rachelburke-1.myrealtyonegroup.com/>

